

Community Health Needs Assessment (CHNA): Crockett County

Conducted by:
Jackson-Madison County General Hospital
Department of Business Development and Planning
Victoria S. Lake
Jocelyn D. Hodge
Megan Carefoot

March 8, 2012

**In fulfillment of the requirements of the Patient Protection
and Affordable Care Act Pub.L. No.111-148, 124 Stat. 119,
enacted March 23, 2010.**

**RESOLUTION OF THE BOARD OF TRUSTEES
OF
JACKSON-MADISON COUNTY GENERAL HOSPITAL DISTRICT
AND
HUMBOLDT GENERAL HOSPITAL, INC.
AND
GIBSON GENERAL HEALTHCARE CORPORATION
AND
CAMDEN GENERAL HOSPITAL, INC.
AND
BOLIVAR GENERAL HOSPITAL, INC.
AND
MILAN GENERAL HOSPITAL, INC.
AND
PATHWAYS OF TENNESSEE, INC.**

COMMUNITY HEALTH NEEDS ASSESSMENT APPROVAL

WHEREAS, the Patient Protection and Affordable Care Act, enacted March 10, 2010, required public and not-for-profit hospitals to perform a Community Health Needs Assessment for each hospital; and

WHEREAS, the staff of the District has conducted such an Assessment and prepared the report as required for each of its hospitals; and

WHEREAS, the Assessments were prepared in accordance with IRS issued Notice 2011-52 Notice Regarding Community Health Needs Assessments for Tax Exempt Hospitals; and

WHEREAS, the Board finds that the Assessments substantially meet the requirements of the of the Patient Protection and Affordable Care Act and the IRS Issued Notice 2011-52, and that the Implementation Strategies set forth in the Assessments shall be implemented in accordance with Management recommendations.

NOW, THEREFORE, BE IT RESOLVED, that the Community Health Needs Assessments given to the Board are approved and adopted.

ADOPTED, this the 25th day of September, 2012.

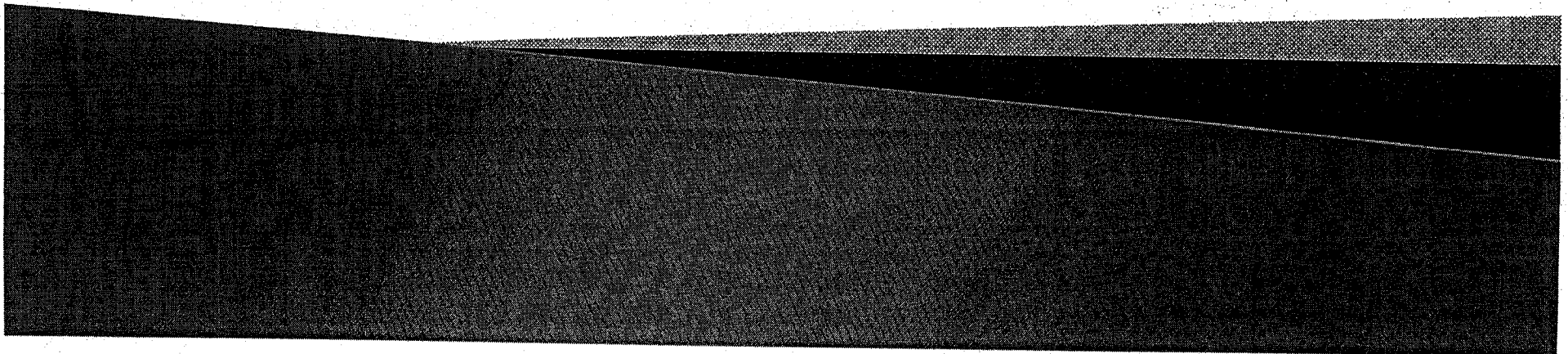


PHIL BRYANT, Chairman

Exhibit _____

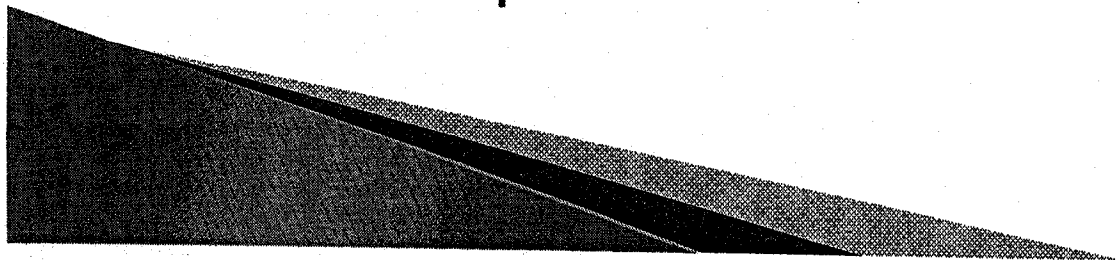
Patient Protection and Affordable Care Act–Required Community Health Needs Assessments

Conducted By:
West Tennessee Healthcare Department of
Business Development and Planning



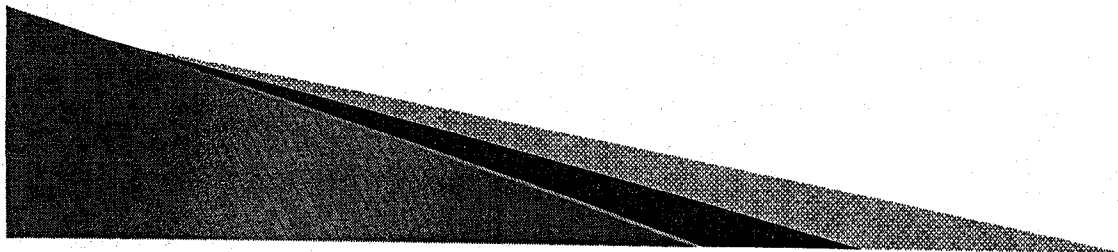
Community Health Needs Assessments

- ▶ Conducted to fulfill requirements of the Patient Protection and Affordable Care Act enacted March 10, 2010.
- ▶ Required for all public and not-for-profit hospitals only
- ▶ Procedures followed and information provided in the reports meet requirements in IRS issued Notice 2011-52 Notice Regarding Community Health Needs Assessments for Tax Exempt Hospitals
- ▶ Hospital organizations with multiple hospitals must conduct community needs assessment for each hospital.



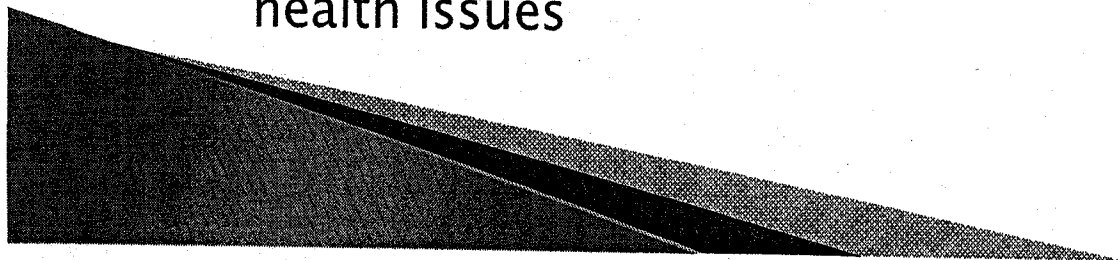
Community Health Needs Assessments

- ▶ Assessments conducted for the following counties:
- ▶ Camden General Hospital–Benton County
- ▶ Bolivar General Hospital–Hardeman County
- ▶ Gibson General Hospital–Gibson County
- ▶ Humboldt General Hospital–Gibson County
- ▶ Milan General Hospital–Gibson County
- ▶ Jackson–Madison County General Hospital–Madison, Crockett, Chester Counties
- ▶ Pathways of Tennessee–Crockett, Dyer, Gibson, Hardeman, Haywood, Henderson, Lake, Madison, Obion, Weakley Counties



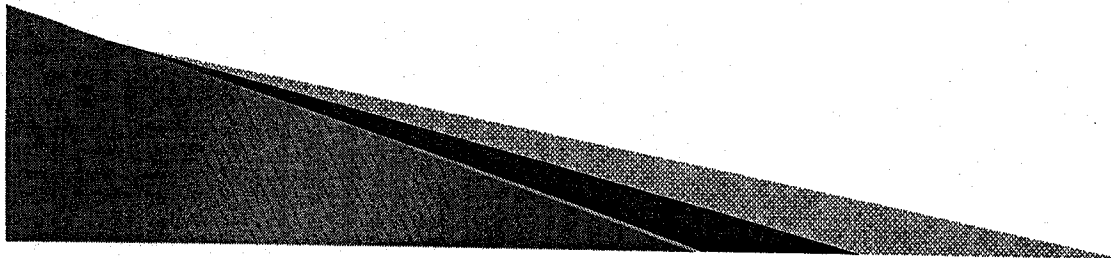
Community Health Needs Assessments

- ▶ Assessment must include the following:
 - Description of the community and how “community was determined”
 - Description of the process and methods used, including sources and dates of data collection, analytical methods used, information gaps, collaborating organizations
 - Report has 10 organizational goals, committee at each facility that worked on assessments, secondary data that was reviewed that included at least 3 years of trend data for each health issue, analytical method (Hanlon Method), information gaps, collaborating organizations
 - Description of how hospital considered input from persons representing broad interests of the community
 - Each county had a committee of community representatives who participated in data collection & process of prioritizing health issues



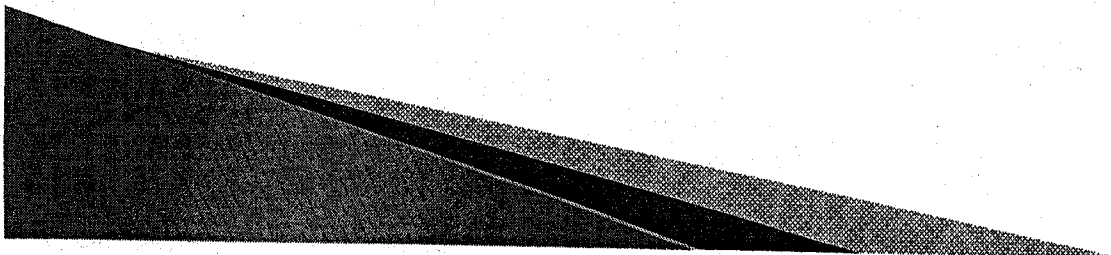
Community Health Needs Assessments

- Community surveys distributed throughout each county requesting information on perceptions of health issues facing the area
 - Number of returned surveys:
 - Madison County: 1,099
 - Gibson County: 387
 - Benton County: 158
 - Hardeman County: 425
 - Chester County: 145
 - Crockett County: 148
 - Pathways: 263
- Description of prioritizing health needs:
 - community committee input
 - Hospital staff use of Hanlon Method that considers size, seriousness, and effectiveness in prioritizing health issues



Community Health Needs Assessments

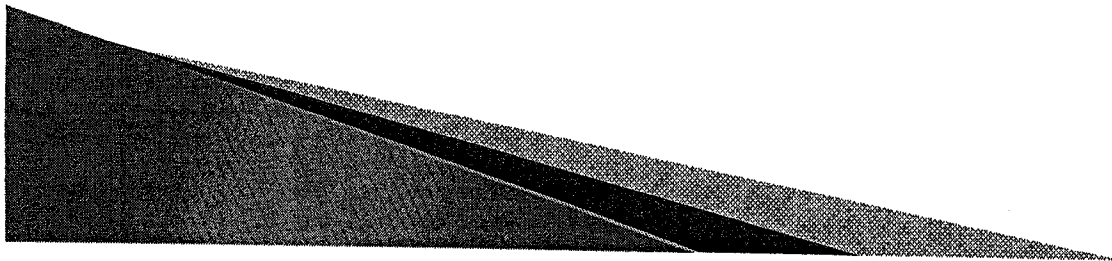
- Each report contains listing of health resources for each county.
- Community committee had reps from county health department, agencies serving low income & minorities
- Implementation strategies must be identified for each prioritized health issues
- Pathways of Tennessee identified health issues:
 - Chronic mental health
 - Depression
 - Domestic violence/anger management
 - Co-occurring (mental health and substance abuse)
 - Alcohol, illegal drugs, prescription drug use



Identified Health Issues By County						
						Tobacco Use/Alcohol/Drug Use
Benton	X	X	X	X	X	Diabetes
Chester	X	X	X	X	X	Obesity
Crockett	X	X	X	X	X	Cancer
Gibson	X	X	X	X	X	High Blood Pressure
Hardeman	X	X	X	X	X	Heart Conditions
Madison	X	X	X	X	X	

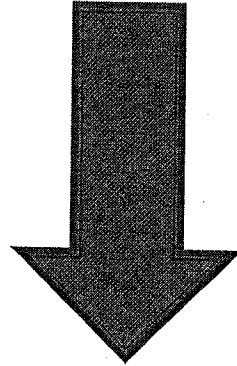
Community Health Needs Assessments

- ▶ Implementation Strategies for Hospitals:
 - Use of HealthAwares with follow-up for those identified through risk assessment
 - Alice and Carl Kirkland Cancer Center services
 - LIFT wellness center and primary care clinics
 - Disease management
 - Local health screenings
 - Local exercise programs
 - Local health education classes
 - Numerous mental health, substance abuse outreach programming
- ▶ Assessments must be updated and revised very three (3) years



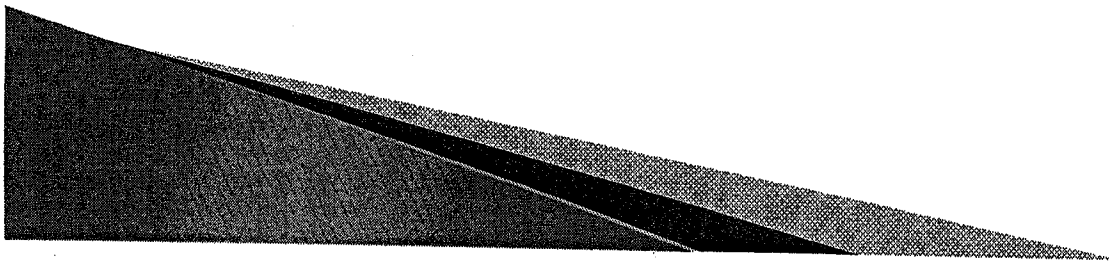
Burden of Chronic Disease

Heart disease, high blood pressure, obesity,
diabetes, some cancers



LIFESTYLE FACTORS

Poor dietary choices, physical inactivity



Initiatives to Address Chronic Diseases

- ▶ LIFT Wellness Center
 - Medical fitness, clinical integration programs
 - Joint replacement, phase 3 cardiac rehab, bariatrics
- ▶ Healthy Heights Employee Wellness Program
 - WTH employees
 - Turn-key product available to other employers
- ▶ Disease Management Program
 - Diabetes, congestive heart failure (CHF)
 - Referred by physicians, employer groups, at hospital discharge, self-enroll

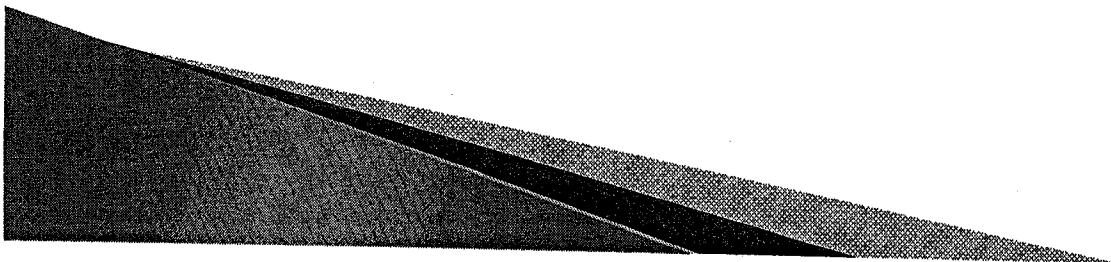


Table of Contents

Table of Contents

Executive Summary	1
Introduction	2
Description of Hospital and Community	2
Description of the Community Health Needs Survey Process	3
Community Health Needs Assessment Prioritization Process Size, Seriousness, Effectiveness, & Available Community Resources	6
Implementation Strategies	10
Heart Conditions and High Blood Pressure	10
Cancer	10
Obesity	10
Diabetes	10
Conclusion	10
<u>Attachments</u>	
Attachment A Invitation Letter to Community Members	
Attachment B Crockett County Survey Instrument	
Attachment C Survey Results Summary	
Attachment D The Hanlon Method	
Attachment E Data on Size of Health Issues	
Attachment F Community Resources	

Executive Summary

Crockett County Community Health Needs Assessment Executive Summary

Under the leadership of Jackson-Madison County General Hospital, a community health needs assessment of Crockett County, Tennessee was conducted in fulfillment of the requirements of the Patient Protection and Affordable Care Act Pub.L. No.111-148, 124 Stat. 119, enacted March 23, 2010. The designated "community" for the needs assessment is Crockett County, Tennessee. Crockett County, Tennessee does not have a hospital. However, Crockett County is in the primary service area of the Jackson-Madison County General Hospital. According to the Tennessee Hospital Association inpatient market share data (2009), Jackson-Madison County General Hospital had 62.9 percent of the inpatient market share consisting of 1,167 discharges. The mission of the Community Health Needs Assessment is to evaluate and improve the health status and wellbeing of the residents of Crockett County, Tennessee with an emphasis on preventive measures. The community health needs assessment process was a blending of citizen perceptions of health issues facing the community with secondary data on the actual extent of particular problems.

Community input on the perception of health issues facing the area was accomplished through a survey administered throughout the Chester County community. A total of 148 completed surveys were returned. The completed surveys were analyzed focusing on what percentage of the respondents thought a health issue "was not a problem," "not sure," or "was a problem" for the community. Community input was also considered from a diverse group of community representatives. The community committee narrowed a large list of health issues on the survey to nine (9). These 9 health issues were:

Heart Conditions	High Blood Pressure	Cancer
Obesity	Asthma	Diabetes
Dementia/Alzheimer's	Teen Pregnancy	Tobacco Use, Alcohol and Drug Abuse

Further research was conducted by hospital staff to provide information on the size, seriousness, and available community resources for each of the 9 health issues identified by the community committee. Crockett County needs were prioritized by a team of Hospital staff using a mathematical algorithm called the Hanlon Method. The Hanlon Method, developed by Felix, Burdine and Associates, was used to assign numerical values to rate the size, seriousness, and effectiveness of available interventions for each health issue. Consistent and common resources identified for each health issue include the Crockett County Health Department, the Crockett County School System, local physician clinics, local churches, community and senior centers, civic clubs, local non-profit agencies, American Heart Association, American Cancer Society, American Diabetes Association, and American Association of Retired Persons.

As a result of reviewing secondary data on the size, seriousness, available community resources and utilizing the Hanlon Method algorithm, the hospital committee identified five priority health issues from the nine identified by the community committee. The five priority health issues:

Heart Conditions	High Blood Pressure	
Obesity	Diabetes	Tobacco, Alcohol, and Drug Abuse

Crockett County has developed a strategy for addressing heart condition, high blood pressure, obesity, and diabetes that focuses on early detection, referral to physician or healthcare professional, and development of an individualized program. The Crockett County Health Department offers blood pressure screening and education. The Health Department also participates with other community agencies, in local health fairs offering screenings for hypertension, the influenza vaccination, height, weight, and BMI. The Crockett County University of Tennessee Extension Agency provides wellness education and cooking classes. In addition UT Extension offers Walk Across Tennessee a 5 week walking program for teams of eight people. The teams will have a friendly competition to see who can log the most miles walking, jogging, biking, dancing or other types of physical activity. Diabetes education classes are offered twice yearly at the Crockett County Senior Citizen Center. The class is taught by a certified diabetic educator. Individuals are referred to a mental health facility or their primary care physician for referrals to an A&D treatment facility.

Introduction

Under the leadership of Jackson-Madison County General Hospital a community health needs assessment of Crockett County, Tennessee was conducted in fulfillment of the requirements of the Patient Protection and Affordable Care Act Pub.L. No.111-148, 124 Stat. 119, enacted March 23, 2010. The community health needs assessment process was a blending of citizen perceptions of health issues facing the community with secondary data on the actual extent of particular problems. Community input on the perception of health issues facing the area was accomplished through a survey administered throughout the Crockett County community. Community input was also considered from a diverse group of community representatives. Crockett County needs were prioritized by a team of community leaders using a mathematical algorithm called the Hanlon Method. A prioritized list of needs, implementation activities and associate community resources are provided.

Description of the Hospital and Community

The designated "community" for the needs assessment is Crockett County, Tennessee. Crockett County, Tennessee does not have a hospital. However, Crockett County is in the primary service area of the Jackson-Madison County General Hospital. According to the Tennessee Hospital Association inpatient market share (2009), Jackson Madison County General Hospital had 62.9 percent of the inpatient market share consisting of 1,167 discharges. With a 2010 population of 14,408, Crockett County is located in the rural West Tennessee approximately 83 miles East of Memphis and 148 miles West of Nashville. The population is 82 percent Caucasian, 14 percent African American, and 4 percent Other races. According to the American Community Survey (2005-2009), 20 percent of the population is below the Federal poverty level. The per capita personal income level is \$20,097. The population under 65 years of age represents 84 percent while the over age 65 population is 16 percent of the total. About 24 percent of the population age 25 and older does not have a high school diploma or GED; 42 percent have a high school diploma; 20 percent have some college, and 14 percent have a Bachelor's degree or higher.

Crockett County has a wide range of industries that employ individuals living in and around the county. Crockett County is home to manufacturers or businesses such as: Crockett County Nursing Home, Inc. (131 employees), Asea Brown Baveri which specializes in transformers and components (125 employees), Med Line Industries which focuses on medical supplies (43 employees), Pictsweet Frozen Foods (1000 employees) processing frozen vegetables, RDS, Inc. which recycles lotions and oils (200 employees), and Advantage Manufacturing Corp. with specialty in injection molding, plastic containers, and parts (75 employees).

The county seat of Crockett County is Alamo, Tennessee. The City of Alamo, City of Bells, City of Friendship, Crockett County Government, and the Crockett County School System are all located in Crockett County. Crockett County has two public school systems. The Alamo City Schools have one school with 576 children. Crockett County School System is composed of 5 schools with 1,761 students.

Description of the Community Health Needs Assessment Survey Process

The mission of the Community Health Needs Assessment is to evaluate and improve the health status and wellbeing of the residents of Crockett County, Tennessee with an emphasis on preventive measures. The community health needs assessment of Crockett County, Tennessee was a blending of citizen perceptions of health issues facing the community with secondary data on the actual extent of particular problems.

The Community Health Needs Assessment had ten (10) organizational goals.

- To form alliances between West Tennessee Healthcare, non-profit organizations, and the community at large to assess, improve, and promote the community health of Crockett County, Tennessee.
- To identify internal resources already available to assist in improving community health.
- To assist in identifying available community health resources.
- To define "health" as it pertains to Crockett County, Tennessee.
- To identify collaborative participants.
- To educate and gain formal support of the West Tennessee Healthcare leadership team, the Board of Trustees, community leaders, and others.
- To assist in establishing baseline health status assessment of Crockett County by collecting and reviewing available data and statistics on residents' perceptions of health issues facing the community and secondary data on such health issues.
- To assist in determining the standards against which to measure the current and future health status of the community.
- To assist in the communitywide establishment of health priorities and in facilitating collaborative planning, actions, and direction to improve the community health status and quality of life.

- To promote the need for ongoing evaluation of the community health assessment process to learn results, establish new goals and encourage further community action and involvement.

The first step in the community health needs assessment process was to identify a committee of Crockett County Community Leaders to organize the process, facilitate data collection, review and analyze the results. Community Members of the Crockett County Committee were:

Karen Utley	Jackson-Madison County General Hospital
Diana Hart	Crockett County Chamber of Commerce
Micah Rudd Director	Crockett County Health Department

Jackson-Madison County General Hospital staff assisted with the development of an anonymous survey instrument that was used to collect input from a broad range of community interests. The survey instrument included questions on the perceptions of the respondents relative to communicable diseases, chronic health problems, family health concerns, access to health resources, community concerns, and demographics of age, race, education level, insurance, and residence. Respondents were asked on the survey to indicate whether they thought a particular health issue was "1=not a problem," "2=not sure," or "3=is a problem" for the Crockett County community. Locations to distribute the survey throughout the community were also suggested and discussed by committee members.

Upon completion of the survey instrument, a committee of community representatives was formed to review the survey instrument for completeness and assistance with interpretation of the results. An invitation to serve on the community committee was sent to prospective members from Jackson-Madison County General Hospital CEO/President November 20, 2011. A copy of this letter is included in Attachment A. Members of the committee represented a broad range of community interests in Crockett County. Members of the community committee were:

Mary Marvin	Neighbors Offering Assistance and Hope
Dorothy Leggett	Southwest Area on Aging and Disability
Alan Jowers	First Assembly of God
Brandon Ward	Crockett County Ambulance Services
Johnna Slayton	Crockett County Property Assessor
Diana Hart	Crockett County Chamber of Commerce
Harold Craig	City of Bells
Karen Utley	Jackson-Madison County General Hospital
Micah Rudd Director	Crockett County Health Department.

Membership on the community committee included Micah Rudd Director of the Crockett County Health Department. Mrs. Rudd has special knowledge of public health issues of influenza, sexually transmitted diseases, teenage pregnancy, HIV/AIDS, Hepatitis C, and access to health resources.

An introductory meeting of the community committee was held on November 1, 2011. At this meeting the process for conducting the community health needs assessment was reviewed and discussed. The draft survey instrument to collect citizen perception of health issues facing Crockett County was also reviewed and suggested changes and modifications were given by committee members. Locations to distribute the anonymous survey throughout the community were also suggested and discussed by committee members.

The survey instrument was finalized and then distributed by hand throughout the Crockett County community. Attachment B contains a copy of the survey instrument. Table 1 contains a list of locations, dates, and number of returned surveys from the survey process.

Table 1
Community Health Assessment Survey Information

Location

Southwest Area on Aging and Disability
Crockett County Courthouse
Crockett County Chamber of Commerce
Crockett County Health Department
Local Churches
Health Fair
Banks

All Surveys in Gibson County were distributed on 11/01/2011.

A total of 148 completed surveys were returned by March 1, 2011. The completed surveys were analyzed focusing on what percentage of the respondents thought a health issue "was not a problem," "not sure," or "was a problem" for the community.

**Community Health Needs Assessment Prioritization Process
Size, Seriousness, Effectiveness &
Available Community Resources**

The survey results and a summary page were provided to the community committee which met on March 7, 2012 to review the data and results. The community committee was asked to narrow the list of 54 health issues on the survey instrument to a more manageable number. To assist with this process, hospital staff provided a summary page that highlighted health issues where at least 50 percent of the respondents indicated a health issue "was a problem" for the community. Attachment C contains the survey summary. For the following list of health issues, at least 50 percent of the respondents indicated it "was a problem" for the community.

Influenza	Heart Condition
High Blood Pressure	Cancer
Arthritis	Obesity
Asthma	Diabetes
Allergies	Dementia/Alzheimer's
Hearing Loss	Child Abuse
Motor Vehicle Accidents	Teenage Pregnancy
Tobacco Use, Alcohol, and Drug Abuse	Violent Crimes

Using the 50 percent threshold as a guide the community committee narrowed the list of health issues on the survey to nine (9). These health issues were:

Heart Condition	High Blood Pressure
Cancer	Obesity
Asthma	Diabetes
Dementia/Alzheimers	Teen Pregnancy
Tobacco Use, Alcohol, and Drug Abuse	

The Crockett County Community Committee was reconvened on March 7, 2012 to prioritize the list of 9 health issues identified by the community committee for further research. The Hospital staff used a mathematical algorithm called the Hanlon Method, developed by Felix, Burdine and Associates, to assign numerical values to rate the size, seriousness, and effectiveness of available interventions for each health issue. The Hanlon Method algorithm is as follows:

$$\text{Opportunity} = (A + 2B)C$$

A=size of the identified health problem

B=seriousness of the identified health problem

C=effectiveness of available interventions for the identified health problem

A=Size

Size is defined by the prevalence of a condition, characteristic, or disease in an entire population (or among a specific sub-group population). The numerical scoring for the size of a health issue is:

<u>Percent of population with health problem</u>	<u>Score</u>
25%+	9-10
10-24%	7-8
1-9%	5-6
0.1-0.9%	3-4
0.01-0.09%	1-2

B=Seriousness

Seriousness is defined by urgency to intervene, severity (leads to death?), disproportionate among vulnerable populations, or economic impact. The numerical scoring for seriousness of a health issue is:

<u>How serious</u>	<u>Score</u>
Very Serious	9-10
Serious	6-8
Moderately Serious	3-5
Not Serious	0-2

C=Effectiveness of Available Interventions

Effectiveness of available interventions is defined by the "best real world" expectations for Jackson-Madison County General Hospital to be effective in addressing a health issue based on, in part, available community resources. The numerical scoring for effectiveness of available interventions is:

<u>Effectiveness</u>	<u>Score</u>
Very Effective (80%+)	10
Relatively Effective (60-79%)	8-9
Effective (40-59%)	6-7
Moderately Effective (20-39%)	4-5
Relatively Ineffective (<20%)	0-3

Information on the Hanlon Method is found in Attachment D.

Further research was then conducted by hospital staff to provide information on the size, seriousness, and available community resources for each of the 16 health issues identified by the community committee. Attachment E1 has data on the size of the health issues and Attachment E2 lists available community resources for each of the 16 identified health issues. Consistent and common resources identified for each health issue in Attachment E2 include the Crockett County Health Department, the Crockett County School System, local physician clinics,

local churches, community and senior centers, civic clubs, local non-profit agencies, American heart Association, American Cancer Society, American Diabetes Association, and American Association of Retired Persons

Table 2 contains the Hanlon Method scoring for each identified health issue.

Issue	Table 2 Hanlon Method Scoring Results			
	A= Size	B= Seriousness	C= Effectiveness	Total (A+2B)C
Heart Condition	8	8	5	120
High Blood Pressure	9	9	7	189
Cancer	9	9	3	81
Obesity	10	9	5	140
Asthma	2	6	2	28
Diabetes	10	9	3	84
Dementia/Alzheimers	8	3	2	28
Teen Pregnancy	5	1	2	14
Tobacco, Alcohol, and Drugs	9	7	5	115

As a result of reviewing secondary data on the size, seriousness, available community resources and utilizing the Hanlon Method algorithm, the hospital committee identified five priority health issues from the 9 identified by the community committee. The five priority health issues:

Implementation Strategies

Crockett County has developed a strategy for addressing heart condition, high blood pressure, obesity, and diabetes that focuses on early detection, referral to physician or healthcare professional, and development of an individualized program.

Heart Conditions and High Blood Pressure

Crockett County Health Department offers blood pressure screening and education. The Health Department also participates with other community agencies, in local health fairs offering screenings for hypertension, the influenza vaccination, height, weight, and BMI.

Obesity,

Crockett County University of Tennessee Extension Agency provides wellness education and cooking classes. In addition UT Extension offers Walk Across Tennessee a 5 week walking program for teams of eight people. The teams will have a friendly competition to see who can log the most miles walking, jogging, biking, dancing or other types of physical activity.

Diabetes

Diabetes education classes are offered twice yearly at the Crockett County Senior Citizen Center. The class is taught by a certified diabetic educator.

Tobacco, Alcohol, and Drug Abuse

Individuals are referred to a mental health facility or their primary care physician for referrals to an A&D treatment facility.

Conclusion

The Crockett County Community Health Needs Assessment was presented to the West Tennessee Healthcare Quality Council on July 3, 2012. The document was approved for submission to the West Tennessee Healthcare Board of Trustees. A presentation was made to the Board of Trustees on September 25, 2012, and the Crockett County Community Health Needs Assessment was approved on this date. The Plan will be updated every three years.

Attachment A



**West Tennessee
Healthcare™**

620 Skyline Drive • Jackson, Tennessee 38301 • 731-541-5000 • www.wth.org

MEMORANDUM

DATE: November 20, 2011

TO: Crockett County Health Assessment Committee

FROM: Bobby Arnold CEO/ President, Jackson-Madison County General Hospital

RE: Crockett County Community Health Assessment Community Committee

Crockett County, Tennessee is in the primary services area of the Jackson-Madison County General Hospital. As part of our hospital service area we have provided a wide range of community health activities that include medical screenings, health fairs, health education classes, sponsorships, and other activities.

In past years Jackson-Madison County General Hospital has conducted needs assessment to ensure that the health activities conducted meet identified community needs. In addition, the recent Federal Patient Protection and Affordable Care Act (Health Care Reform) requires non-profit hospitals to conduct community needs assessment every three years.

We are beginning the process of assessing the community health needs in Crockett County that will be a blending of residents' perception of the health issues facing us with health status and vital statistics on our community. We will distribute a survey throughout the community and the collect data on issues identified from the survey.

We invite you to be a member of the Crockett County Community Committee that will help us review the survey data, and narrow that list of health issues to a manageable number by focusing on the size, seriousness, and the effectiveness of interventions. We anticipate this process will take three months and will in five (5) one hour meetings.

- Ayers Children's Medical Center
- Bolivar General Hospital
- Bradford Family Medical Center
- Camden Family Medical Center
- Camden General Hospital
- CardioThoracic Surgery Center
- East Jackson Family Medical Center
- Emergency Services
- Employer Services

- Gibson General Hospital
- Humboldt General Hospital
- Jackson-Madison County General Hospital
- Kirkland Cancer Center
- Kiwanis Center for Child Development
- Medical Center EMS
- Medical Center Home Health
- Medical Center Infusion Services

- Medical Center Laboratory
- Medical Center Medical Products
- Medical Clinic of Jackson
- MedSouth Medical Center
- Milan General Hospital
- Pathways Behavioral Health Services
- Physician Services
- Sports Plus Rehab Centers
- Tennessee Heart and Vascular Center

- West Tennessee Healthcare Foundation
- West Tennessee Imaging Center
- West Tennessee Neurosciences
- West Tennessee OB/GYN Services
- West Tennessee Rehabilitation Center
- West Tennessee Surgery Center
- West Tennessee Women's Center
- Work Partners
- Work Plus Rehab Center



**West Tennessee
Healthcare™**

620 Skyline Drive • Jackson, Tennessee 38301 • 731-541-5000 • www.wth.org

We ask you to attend the first introductory meeting of the Community Committee. The meeting will be held Tuesday, November 1, 2011 at Freed Hardeman University in the Physical Education Conference Room. The meeting will start at 11:00 a.m. and will be concluded by 12:30 p.m. Lunch will be served.

Please contact Jocelyn Hodge, Community Health Licensure Coordinator of your attendance plans. She may be reach at 731-984-2161 or Jocelyn.hodge@wth.org. We appreciate you participation in this important process for Hardeman County.

- Ayers Children's Medical Center
- Bolivar General Hospital
- Bradford Family Medical Center
- Camden Family Medical Center
- Camden General Hospital
- CardioThoracic Surgery Center
- East Jackson Family Medical Center
- Emergency Services
- Employer Services

- Gibson General Hospital
- Humboldt General Hospital
- Jackson-Madison County General Hospital
- Kirkland Cancer Center
- Kiwanis Center for Child Development
- Medical Center EMS
- Medical Center Home Health
- Medical Center Infusion Services

- Medical Center Laboratory
- Medical Center Medical Products
- Medical Clinic of Jackson
- MedSouth Medical Center
- Milan General Hospital
- Pathways Behavioral Health Services
- Physician Services
- Sports Plus Rehab Centers
- Tennessee Heart and Vascular Center

- West Tennessee Healthcare Foundation
- West Tennessee Imaging Center
- West Tennessee Neurosciences
- West Tennessee OB/GYN Services
- West Tennessee Rehabilitation Center
- West Tennessee Surgery Center
- West Tennessee Women's Center
- Work Partners
- Work Plus Rehab Center

Attachment B



Crockett County Community Health Assessment

Attachment B Survey
Instrument

We realize there are many health-related problems in the community. We need your help in defining the priority health programs in our community. We would like you to take a few minutes to answer some questions relating to your views on health problems facing West Tennessee. We appreciate your time and effort.

What area of Crockett County do you live?

- ☐ Alamo ☐ Bells ☐ Friendship ☐ Crockett Mills
☐ Gadsden ☐ Maury City

The following is a list of problems experienced by many communities. Please indicate how much of a problem you feel each of these is for the West Tennessee area, including Crockett County. Indicate your choice as not a problem, not sure, or is a problem.

Communicable Diseases

Response Definition: 1=Not a Problem 2=Not Sure 3=Is a Problem

	1	2	3
1. Tuberculosis (TB)	<input type="checkbox"/>	<input type="checkbox"/>	<input type="checkbox"/>
2. Influenza (Flu)	<input type="checkbox"/>	<input type="checkbox"/>	<input type="checkbox"/>
3. Sexually Transmitted Diseases	<input type="checkbox"/>	<input type="checkbox"/>	<input type="checkbox"/>
4. HIV/AIDS	<input type="checkbox"/>	<input type="checkbox"/>	<input type="checkbox"/>
5. Hepatitis C	<input type="checkbox"/>	<input type="checkbox"/>	<input type="checkbox"/>

Chronic Health Problems

6. Emphysema (chronic obstructed pulmonary disease)	<input type="checkbox"/>	<input type="checkbox"/>	<input type="checkbox"/>
7. Heart Conditions	<input type="checkbox"/>	<input type="checkbox"/>	<input type="checkbox"/>
8. High Blood Pressure	<input type="checkbox"/>	<input type="checkbox"/>	<input type="checkbox"/>
9. Skin Cancer	<input type="checkbox"/>	<input type="checkbox"/>	<input type="checkbox"/>
10. Colon Cancer	<input type="checkbox"/>	<input type="checkbox"/>	<input type="checkbox"/>
11. Lung Cancer	<input type="checkbox"/>	<input type="checkbox"/>	<input type="checkbox"/>
12. Breast Cancer	<input type="checkbox"/>	<input type="checkbox"/>	<input type="checkbox"/>
13. Prostate Cancer	<input type="checkbox"/>	<input type="checkbox"/>	<input type="checkbox"/>
14. Arthritis	<input type="checkbox"/>	<input type="checkbox"/>	<input type="checkbox"/>
15. Obesity	<input type="checkbox"/>	<input type="checkbox"/>	<input type="checkbox"/>
16. Asthma	<input type="checkbox"/>	<input type="checkbox"/>	<input type="checkbox"/>
17. Diabetes	<input type="checkbox"/>	<input type="checkbox"/>	<input type="checkbox"/>
18. Allergies	<input type="checkbox"/>	<input type="checkbox"/>	<input type="checkbox"/>
19. Osteoporosis	<input type="checkbox"/>	<input type="checkbox"/>	<input type="checkbox"/>
20. Dementia/Alzheimer's	<input type="checkbox"/>	<input type="checkbox"/>	<input type="checkbox"/>
21. Hearing loss	<input type="checkbox"/>	<input type="checkbox"/>	<input type="checkbox"/>
22. Cataracts	<input type="checkbox"/>	<input type="checkbox"/>	<input type="checkbox"/>
23. Glaucoma	<input type="checkbox"/>	<input type="checkbox"/>	<input type="checkbox"/>
24. Macular Degeneration	<input type="checkbox"/>	<input type="checkbox"/>	<input type="checkbox"/>



Crockett County Community Health Assessment

Family Health Concerns

Response Definition: 1=Not a Problem 2=Not Sure 3=Is a Problem

	1	2	3
25. Intimate partner violence	<input type="checkbox"/>	<input type="checkbox"/>	<input type="checkbox"/>
26. Child abuse	<input type="checkbox"/>	<input type="checkbox"/>	<input type="checkbox"/>
27. Motor vehicle accidents	<input type="checkbox"/>	<input type="checkbox"/>	<input type="checkbox"/>
28. Falls or fall-related injuries	<input type="checkbox"/>	<input type="checkbox"/>	<input type="checkbox"/>
29. Residential fires	<input type="checkbox"/>	<input type="checkbox"/>	<input type="checkbox"/>
30. Dental care	<input type="checkbox"/>	<input type="checkbox"/>	<input type="checkbox"/>
31. Leisure accidents	<input type="checkbox"/>	<input type="checkbox"/>	<input type="checkbox"/>
32. Infant deaths	<input type="checkbox"/>	<input type="checkbox"/>	<input type="checkbox"/>
33. Teenage pregnancy	<input type="checkbox"/>	<input type="checkbox"/>	<input type="checkbox"/>

Access to Health Resources

Response Definition: 1=Not a Problem 2=Not Sure 3=Is a Problem

	1	2	3
34. Access to adult daycare	<input type="checkbox"/>	<input type="checkbox"/>	<input type="checkbox"/>
35. Access to home health care	<input type="checkbox"/>	<input type="checkbox"/>	<input type="checkbox"/>
36. Access to home care (sitter service)	<input type="checkbox"/>	<input type="checkbox"/>	<input type="checkbox"/>
37. Access to care for special needs children	<input type="checkbox"/>	<input type="checkbox"/>	<input type="checkbox"/>
38. Lack of financial resources for medical care	<input type="checkbox"/>	<input type="checkbox"/>	<input type="checkbox"/>
39. Access to healthy foods	<input type="checkbox"/>	<input type="checkbox"/>	<input type="checkbox"/>
40. Access to leisure time physical activity	<input type="checkbox"/>	<input type="checkbox"/>	<input type="checkbox"/>
41. Access to transportation to health care	<input type="checkbox"/>	<input type="checkbox"/>	<input type="checkbox"/>
42. Access to nursing home care	<input type="checkbox"/>	<input type="checkbox"/>	<input type="checkbox"/>
43. Access to a primary care provider	<input type="checkbox"/>	<input type="checkbox"/>	<input type="checkbox"/>
44. Access to medical specialist	<input type="checkbox"/>	<input type="checkbox"/>	<input type="checkbox"/>
45. Access to medications	<input type="checkbox"/>	<input type="checkbox"/>	<input type="checkbox"/>
46. Access to education on wellness	<input type="checkbox"/>	<input type="checkbox"/>	<input type="checkbox"/>
47. Access to education on healthy lifestyles	<input type="checkbox"/>	<input type="checkbox"/>	<input type="checkbox"/>
48. Access to education on prevention	<input type="checkbox"/>	<input type="checkbox"/>	<input type="checkbox"/>
49. Access to facilities for exercise	<input type="checkbox"/>	<input type="checkbox"/>	<input type="checkbox"/>
50. Access to parks for recreation	<input type="checkbox"/>	<input type="checkbox"/>	<input type="checkbox"/>



Crockett County Community Health Assessment



Community Concerns:

Response Definition: 1=Not a Problem 2=Not Sure 3=Is a Problem

	1	2	3
51. Illiteracy	<input type="checkbox"/>	<input type="checkbox"/>	<input type="checkbox"/>
52. Tobacco use	<input type="checkbox"/>	<input type="checkbox"/>	<input type="checkbox"/>
53. Violent crime	<input type="checkbox"/>	<input type="checkbox"/>	<input type="checkbox"/>
54. Alcohol and Drug Abuse	<input type="checkbox"/>	<input type="checkbox"/>	<input type="checkbox"/>

55. Do you consider yourself:

- ☐ Overweight ☐ Underweight ☐ Obese ☐ Just Right

56. Age range:

- ☐ 18 - 24 ☐ 25 - 34 ☐ 35 - 44 ☐ 45 - 54 ☐ 55 - 64 ☐ 65 +

57. Are you:

- ☐ Male ☐ Female

58. Race:

- ☐ Caucasian ☐ African American ☐ Native American
☐ Asian/Pacific Islander ☐ Other

59. School:

- ☐ Less than high school ☐ High school graduate/GED ☐ Some college
☐ Associate degree ☐ Bachelors degree ☐ Advanced degree

60. What type of insurance do you have?

- ☐ Medicare ☐ TennCare ☐ Private Insurance ☐ Other ☐ No Insurance

Comments



Crockett County

Evaluacion de la salud de la comunidad

Nos damos cuenta que hay muchos problemas relacionados con la salud en la comunidad. Necesitamos su ayuda en la definicion de los programas prioritarios de la salud en nuestra comunidad. Nos gustaria que se tome unos minutos para contestar algunas preguntas. Le agradecemos su tiempo.

En que area del condado de Crockett vive usted?

- ☐ Alamo ☐ Bells ☐ Friendship ☐ Crockett Mills
☐ Gadsden ☐ Maury City

La siguiente es una lista de problemas experimentados por muchas comunidades. Por favor indique como se siente usted de estos problemas en el area Oeste de Tennessee, incluyendo el condado de Crockett. Indique su opcion con no hay problema, no estoy seguro, o hay problema-

Enfermedades transmisibles

Response Definition: 1=No hay problema 2=No estoy seguro 3=O hay problema-

	1	2	3
1. Tuberculosis	<input type="checkbox"/>	<input type="checkbox"/>	<input type="checkbox"/>
2. Influenza (gripe)	<input type="checkbox"/>	<input type="checkbox"/>	<input type="checkbox"/>
3. Enfermedades de transmision sexual	<input type="checkbox"/>	<input type="checkbox"/>	<input type="checkbox"/>
4. VIH/SIDA	<input type="checkbox"/>	<input type="checkbox"/>	<input type="checkbox"/>
5. Hepatitis C	<input type="checkbox"/>	<input type="checkbox"/>	<input type="checkbox"/>

Problemas Cronicos de salud

Enfisema(enfermedad pulmonar cronica obstruida)	<input type="checkbox"/>	<input type="checkbox"/>	<input type="checkbox"/>
7. Condiciones del corazon	<input type="checkbox"/>	<input type="checkbox"/>	<input type="checkbox"/>
8. Presion arterial alta	<input type="checkbox"/>	<input type="checkbox"/>	<input type="checkbox"/>
9. Cancer de piel	<input type="checkbox"/>	<input type="checkbox"/>	<input type="checkbox"/>
10. Cancer de colon	<input type="checkbox"/>	<input type="checkbox"/>	<input type="checkbox"/>
11. Cancer de pulmon	<input type="checkbox"/>	<input type="checkbox"/>	<input type="checkbox"/>
12. Cancer de seno (mama)	<input type="checkbox"/>	<input type="checkbox"/>	<input type="checkbox"/>
13. Cancer de prostata	<input type="checkbox"/>	<input type="checkbox"/>	<input type="checkbox"/>
14. Artritis	<input type="checkbox"/>	<input type="checkbox"/>	<input type="checkbox"/>
15. Obesidad	<input type="checkbox"/>	<input type="checkbox"/>	<input type="checkbox"/>
16. Asma	<input type="checkbox"/>	<input type="checkbox"/>	<input type="checkbox"/>
17. Diabetes	<input type="checkbox"/>	<input type="checkbox"/>	<input type="checkbox"/>
18. Alergias	<input type="checkbox"/>	<input type="checkbox"/>	<input type="checkbox"/>
19. Osteoporosis	<input type="checkbox"/>	<input type="checkbox"/>	<input type="checkbox"/>
20. Demencia/Alzheimer's	<input type="checkbox"/>	<input type="checkbox"/>	<input type="checkbox"/>
21. Perdida de la audicion	<input type="checkbox"/>	<input type="checkbox"/>	<input type="checkbox"/>
22. Cataratas	<input type="checkbox"/>	<input type="checkbox"/>	<input type="checkbox"/>
23. Glaucoma	<input type="checkbox"/>	<input type="checkbox"/>	<input type="checkbox"/>
24. Degeneracion macular (perdida de la vista)	<input type="checkbox"/>	<input type="checkbox"/>	<input type="checkbox"/>

Crockett County

Evaluacion de la salud de la comunidad

Problemas de salud familiar

Response Definition: 1=No hay problema 2=No estoy seguro 3=O hay problema-

	1	2	3
25. Violencia de su pareja	<input type="checkbox"/>	<input type="checkbox"/>	<input type="checkbox"/>
26. Abuso infantil	<input type="checkbox"/>	<input type="checkbox"/>	<input type="checkbox"/>
27. Accidentes de automovil	<input type="checkbox"/>	<input type="checkbox"/>	<input type="checkbox"/>
28. caidas o lesiones relacionadas con caidas	<input type="checkbox"/>	<input type="checkbox"/>	<input type="checkbox"/>
29. Incendios residenciales	<input type="checkbox"/>	<input type="checkbox"/>	<input type="checkbox"/>
30. Cuidado dental	<input type="checkbox"/>	<input type="checkbox"/>	<input type="checkbox"/>
31. Accidentes de ocio	<input type="checkbox"/>	<input type="checkbox"/>	<input type="checkbox"/>
32. Muertes infantiles	<input type="checkbox"/>	<input type="checkbox"/>	<input type="checkbox"/>
33. Embarazo en la adolescencia/ Acceso a los recursos de salud	<input type="checkbox"/>	<input type="checkbox"/>	<input type="checkbox"/>

Acceso a los recursos de salud

Response Definition: 1=No hay problema 2=No estoy seguro 3=O hay problema-

	1	2	3
34. Acceso a guarderias de adultos	<input type="checkbox"/>	<input type="checkbox"/>	<input type="checkbox"/>
35. Acceso a servicios de salud a domicilio	<input type="checkbox"/>	<input type="checkbox"/>	<input type="checkbox"/>
36. Acceso a cuidado en casa	<input type="checkbox"/>	<input type="checkbox"/>	<input type="checkbox"/>
7. Acceso a cuidados para ninos con necesidades especiales	<input type="checkbox"/>	<input type="checkbox"/>	<input type="checkbox"/>
38. Falta de recursos financieros para atencion medica	<input type="checkbox"/>	<input type="checkbox"/>	<input type="checkbox"/>
39. Acceso a comida saludable	<input type="checkbox"/>	<input type="checkbox"/>	<input type="checkbox"/>
40. Acceso a actividad fisica en el tiempo libre	<input type="checkbox"/>	<input type="checkbox"/>	<input type="checkbox"/>
41. Acceso de transportacion a los servicios de salud	<input type="checkbox"/>	<input type="checkbox"/>	<input type="checkbox"/>
42. Acceso a un hogar de ancianos	<input type="checkbox"/>	<input type="checkbox"/>	<input type="checkbox"/>
43. Acceso al medico de atencion primaria	<input type="checkbox"/>	<input type="checkbox"/>	<input type="checkbox"/>
44. Acceso a un especialista medico	<input type="checkbox"/>	<input type="checkbox"/>	<input type="checkbox"/>
45. Acceso a medicamentos	<input type="checkbox"/>	<input type="checkbox"/>	<input type="checkbox"/>
46. Access to educacion del bienestar	<input type="checkbox"/>	<input type="checkbox"/>	<input type="checkbox"/>
47. Acceso a la educacion sobre estilos de vida saludables	<input type="checkbox"/>	<input type="checkbox"/>	<input type="checkbox"/>
48. Acceso a la educacion en la prevention	<input type="checkbox"/>	<input type="checkbox"/>	<input type="checkbox"/>
49. Acceso a instalaciones para hacer ejercicio.	<input type="checkbox"/>	<input type="checkbox"/>	<input type="checkbox"/>
50. Acceso a parques de recreacion	<input type="checkbox"/>	<input type="checkbox"/>	<input type="checkbox"/>

Crockett County

Evaluacion de la salud de la comunidad

Community Concerns:

Response Definition: 1=No hay problema 2=No estoy seguro 3=O hay problema-

- | | 1 | 2 | 3 |
|-------------------------------|--------------------------|--------------------------|--------------------------|
| 51. Analfabetismo | <input type="checkbox"/> | <input type="checkbox"/> | <input type="checkbox"/> |
| 52. Consumo de tabaco | <input type="checkbox"/> | <input type="checkbox"/> | <input type="checkbox"/> |
| 53. Delitos violentos | <input type="checkbox"/> | <input type="checkbox"/> | <input type="checkbox"/> |
| 54. Abuso de alcohol y drogas | <input type="checkbox"/> | <input type="checkbox"/> | <input type="checkbox"/> |

55. Se considera usted?

- ☐ pasado de peso ☐ bajo de peso ☐ obeso ☐ bien

56. Rango de edad

- ☐ 18 - 24 ☐ 25 - 34 ☐ 35 - 44 ☐ 45 - 54 ☐ 55 - 64 ☐ 65 +

57. Es usted:

- ☐ masculino ☐ femenina

58. Raza

- ☐ Caucasian ☐ African American ☐ Native American
☐ Asian/Pacific Islander ☐ Hispanic ☐ Other

59. Escuela:

- ☐ Less than high school ☐ High school graduate/GED ☐ Some college
☐ Associate degree ☐ Bachelors degree ☐ Advanced degree

60. Que tipo de aseguransa tiene usted?

- ☐ Medicare ☐ TennCare ☐ Private Insurance ☐ Other ☐ No Insurance

Comentarios

Attachment C

Attachment C Survey Results Summary

CROCKETT COMMUNITY HEALTH ASSESSMENT SURVEY RESULTS

Chamber of Commerce, Churches, Health Department, Senior Citizens Center etc.

N= 148

What area of Crockett County do you live?

Alamo	56	39%
Bells	22	15%
Friendship	17	12%
Crockett Mills	7	5%
Gadsden	22	15%
Maury City	20	14%

(How much of a problem do you feel the health issues listed below are for Crockett County.

COMMUNICABLE DISEASE

Tuberculosis

Not a problem	69	49%
Not sure	61	43%
Is a problem	11	8%

****Influenza (flu)**

Not a problem	29	20%
Not sure	42	29%
Is a problem	73	51%

Sexually Transmitted Disease

Not a problem	16	11%
Not sure	68	47%
Is a problem	61	42%

HIV/AIDS

Not a problem	28	19%
Not sure	93	64%
Is a problem	25	17%

Hepatitis C

Not a problem	27	19%
Not sure	104	72%
Is a problem	13	9%

CHRONIC HEALTH PROBLEMS

Emphysema

Not a problem	14	10%
Not sure	64	45%
Is a problem	63	45%

****Heart Conditions**

Not a problem	8	6%
Not sure	17	12%
Is a problem	120	83%

****High Blood Pressure**

Not a problem	8	5%
Not sure	9	6%
Is a problem	130	88%

Skin Cancer

Not a problem	14	10%
Not sure	64	44%
Is a problem	67	46%

Colon Cancer		
Not a problem	11	8%
Not sure	82	56%
Is a problem	53	36%
Lung Cancer		
Not a problem	13	9%
Not sure	64	44%
Is a problem	70	48%
**Breast Cancer		
Not a problem	12	8%
Not sure	28	19%
Is a problem	105	72%
Prostate Cancer		
Not a problem	12	8%
Not sure	45	31%
Is a problem	89	61%
**Arthritis		
Not a problem	7	5%
Not sure	30	21%
Is a problem	109	75%
**Obesity		
Not a problem	10	7%
Not sure	19	13%
Is a problem	118	80%
**Asthma		
Not a problem	13	9%
Not sure	42	29%
Is a problem	90	62%
**Diabetes		
Not a problem	11	7%
Not sure	16	11%
Is a problem	120	82%
**Allergies		
Not a problem	7	5%
Not sure	23	16%
Is a problem	115	79%
Osteoporosis		
Not a problem	15	10%
Not sure	76	52%
Is a problem	54	37%
Dementia/Alzheimers		
Not a problem	10	7%
Not sure	43	30%
Is a problem	92	63%
Hearing loss		
Not a problem	12	8%
Not sure	56	38%
Is a problem	78	53%
Cataracts		
Not a problem	14	10%
Not sure	68	47%
Is a problem	64	44%

Glaucoma		
Not a problem	21	15%
Not sure	82	57%
Is a problem	41	28%
Macular Degeneration		
Not a problem	19	13%
Not sure	92	63%
Is a problem	34	23%
<u>FAMILY HEALTH CONCERNS</u>		
Intimate partner violence		
Not a problem	17	12%
Not sure	59	41%
Is a problem	68	47%
Child abuse		
Not a problem	19	13%
Not sure	35	24%
Is a problem	91	63%
Motor vehicle accidents		
Not a problem	19	13%
Not sure	35	24%
Is a problem	90	62%
Falls or fall related injuries		
Not a problem	20	14%
Not sure	69	48%
Is a problem	56	39%
Residential fires		
Not a problem	26	18%
Not sure	60	42%
Is a problem	56	39%
**Dental care		
Not a problem	21	15%
Not sure	58	40%
Is a problem	65	45%
Leisure accidents		
Not a problem	26	18%
Not sure	94	65%
Is a problem	25	17%
Infant deaths		
Not a problem	40	28%
Not sure	92	64%
Is a problem	12	8%
**Teenage Pregnancy		
Not a problem	10	7%
Not sure	23	16%
Is a problem	111	77%
<u>ACCESS TO HEALTH RESOURCES</u>		
Access to adult daycare		
Not a problem	35	24%
Not sure	45	31%
Is a problem	65	45%

Access to education on prevention		
Not a problem	37	26%
Not sure	56	39%
Is a problem	50	35%
Access to facilities for exercise		
Not a problem	38	26%
Not sure	27	19%
Is a problem	79	55%
Access to parks and recreation		
Not a problem	58	40%
Not sure	25	17%
Is a problem	61	42%

COMMUNITY CONCERNS

Illiteracy		
Not a problem	29	20%
Not sure	54	38%
Is a problem	60	42%

**Tobacco use		
Not a problem	9	6%
Not sure	10	7%
Is a problem	125	87%

Violent Crimes		
Not a problem	21	15%
Not sure	45	32%
Is a problem	76	54%

**Alcohol and Drug Abuse		
Not a problem	8	6%
Not sure	6	4%
Is a problem	128	90%

Did you consider yourself :

Overweight	8	61%
Underweight	2	1%
Obese	7	5%
Just Right	47	33%

Age range:

18-24	8	6%
25-34	21	15%
35-44	25	17%
45-44	29	20%
55-64	33	23%
65+	28	19%

Are you:

Male	33	23%
Female	111	77%

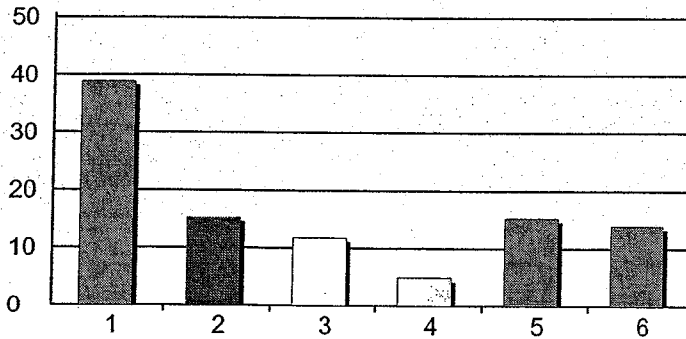
Race:

Caucasian	125	87%
African American	11	8%
Native American	2	1%
Asian/Pacific Islander	0	0%
Other	5	3%

Report Title

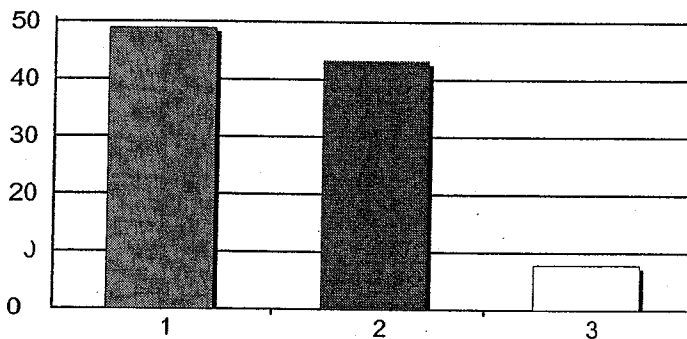
Creation Date: 2/13/2012
Time Interval: 1/24/2012 to 2/13/2012
Total Respondents: 148

What area of Crockett County do you live?



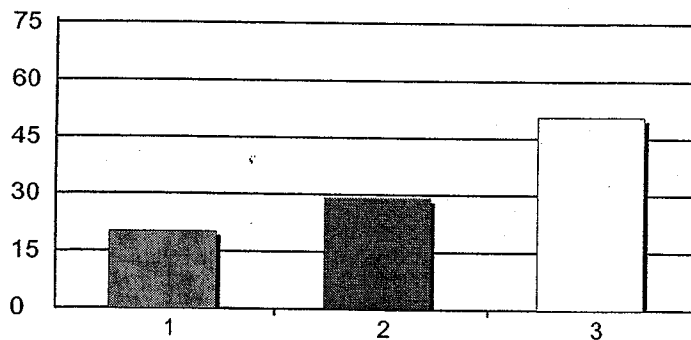
1. Alamo	56	39%
2. Bells	22	15%
3. Friendship	17	12%
4. Crockett Mills	7	5%
5. Gadsden	22	15%
6. Maury City	20	14%
Total Responses:	144	
Mean: 2.84	Standard Deviation: 1.90	

1. Tuberculosis (TB)



1. Not a Problem	69	49%
2. Not Sure	61	43%
3. Is a Problem	11	8%
Total Responses:	141	
Mean: 1.59	Standard Deviation: 0.63	

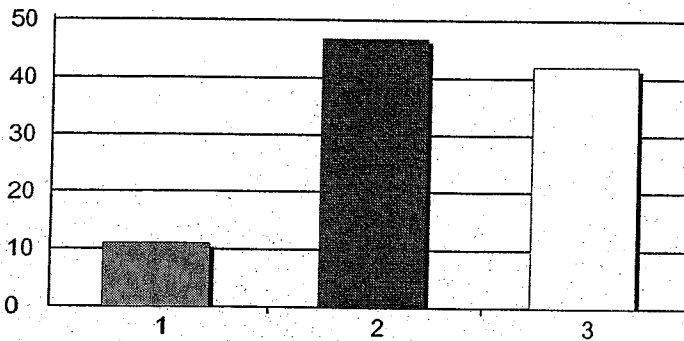
2. Influenza (Flu)



1. Not a Problem	29	20%
2. Not Sure	42	29%
3. Is a Problem	73	51%
Total Responses:	144	
Mean: 2.31	Standard Deviation: 0.79	

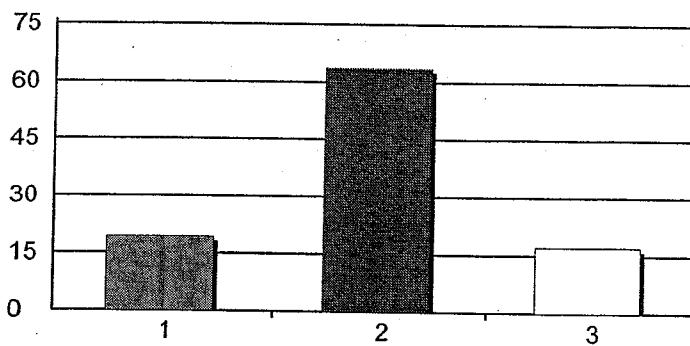
Report Title

Sexually Transmitted Diseases



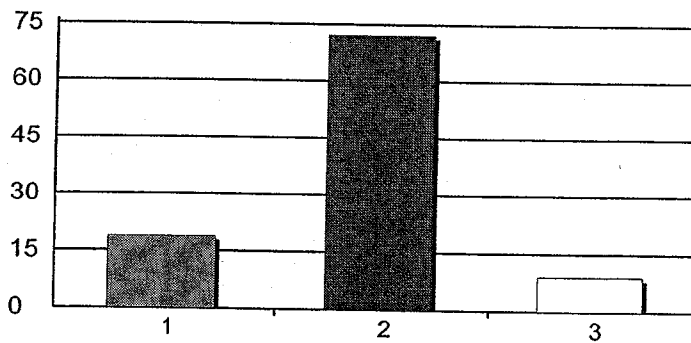
1. Not a Problem 16 11%
 2. Not Sure 68 47%
 3. Is a Problem 61 42%
 Total Responses: 145
 Mean: 2.31 Standard Deviation: 0.66

4. HIV/AIDS



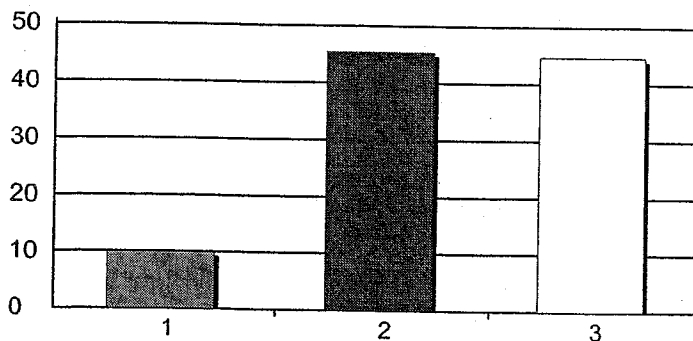
1. Not a Problem 28 19%
 2. Not Sure 93 64%
 3. Is a Problem 25 17%
 Total Responses: 146
 Mean: 1.98 Standard Deviation: 0.60

Hepatitis C



1. Not a Problem 27 19%
 2. Not Sure 104 72%
 3. Is a Problem 13 9%
 Total Responses: 144
 Mean: 1.90 Standard Deviation: 0.52

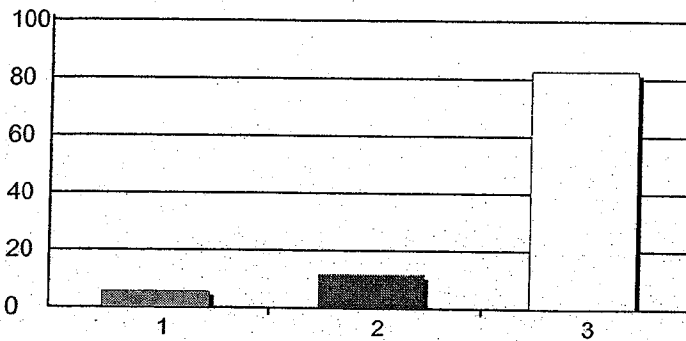
6. Emphysema (chronic obstructed pulmonary disease)



1. Not a Problem 14 10%
 2. Not Sure 64 45%
 3. Is a Problem 63 45%
 Total Responses: 141
 Mean: 2.35 Standard Deviation: 0.65

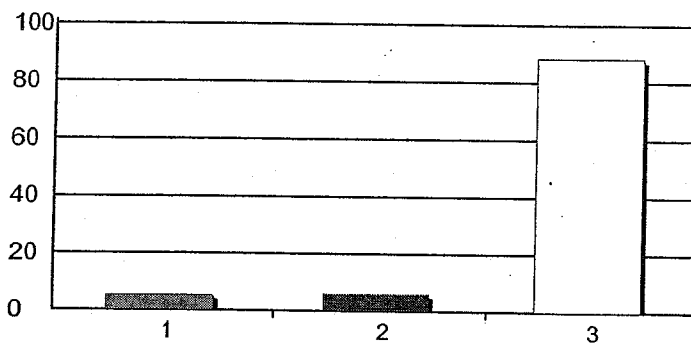
Report Title

Heart Conditions



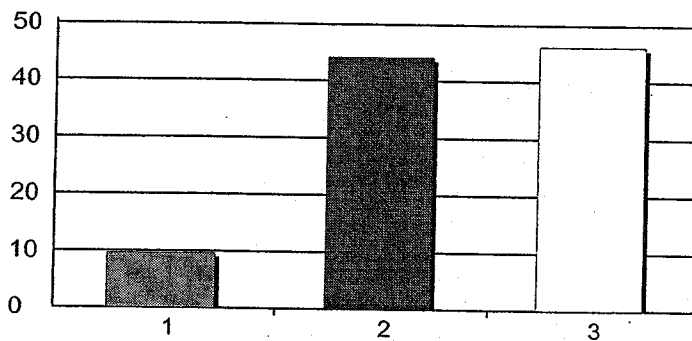
1. Not a Problem 8 6%
 2. Not Sure 17 12%
 3. Is a Problem 120 83%
 Total Responses: 145
 Mean: 2.77 Standard Deviation: 0.54

8. High Blood Pressure



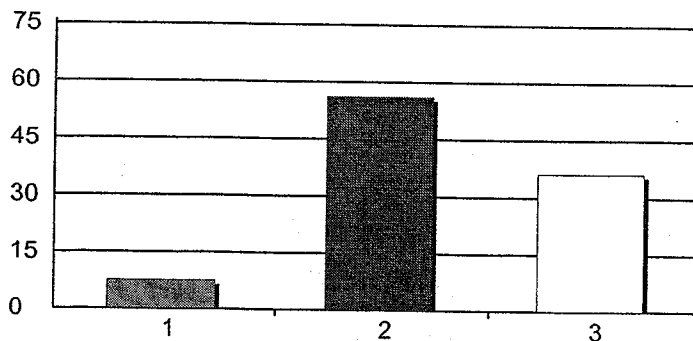
1. Not a Problem 8 5%
 2. Not Sure 9 6%
 3. Is a Problem 130 88%
 Total Responses: 147
 Mean: 2.83 Standard Deviation: 0.50

Skin Cancer



1. Not a Problem 14 10%
 2. Not Sure 64 44%
 3. Is a Problem 67 46%
 Total Responses: 145
 Mean: 2.37 Standard Deviation: 0.65

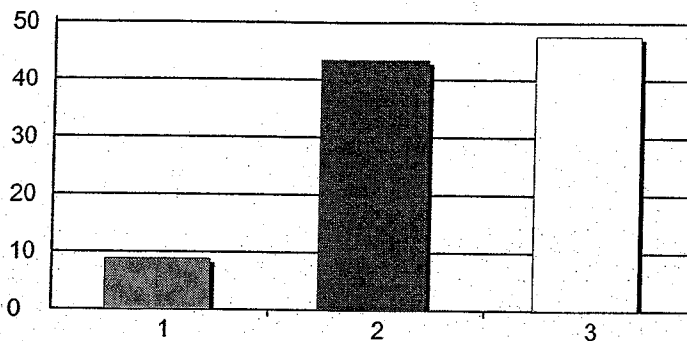
10. Colon Cancer



1. Not a Problem 11 8%
 2. Not Sure 82 56%
 3. Is a Problem 53 36%
 Total Responses: 146
 Mean: 2.29 Standard Deviation: 0.60

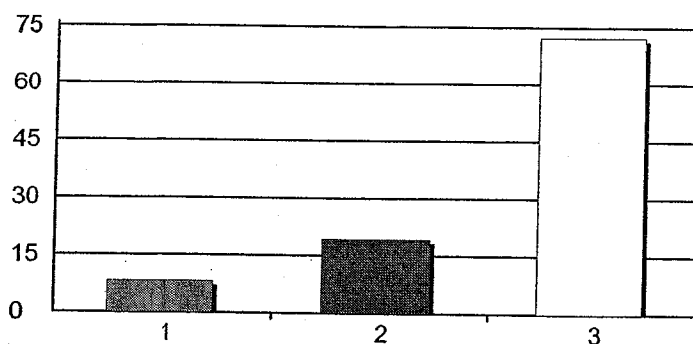
Report Title

1. Lung Cancer



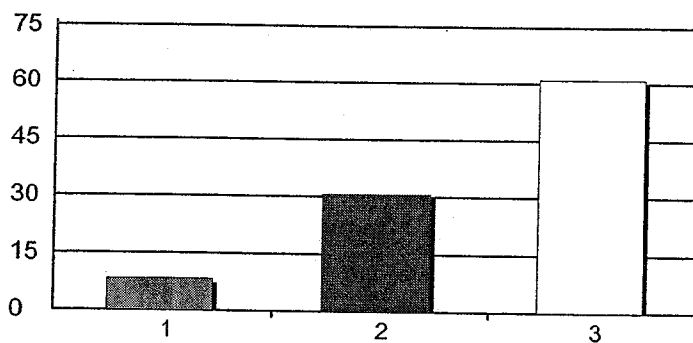
1. Not a Problem 13 9%
 2. Not Sure 64 44%
 3. Is a Problem 70 48%
 Total Responses: 147
 Mean: 2.39 Standard Deviation: 0.65

12. Breast Cancer



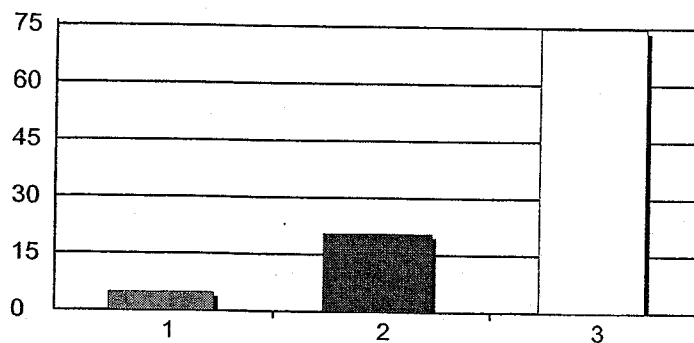
1. Not a Problem 12 8%
 2. Not Sure 28 19%
 3. Is a Problem 105 72%
 Total Responses: 145
 Mean: 2.64 Standard Deviation: 0.63

3. Prostate Cancer



1. Not a Problem 12 8%
 2. Not Sure 45 31%
 3. Is a Problem 89 61%
 Total Responses: 146
 Mean: 2.53 Standard Deviation: 0.65

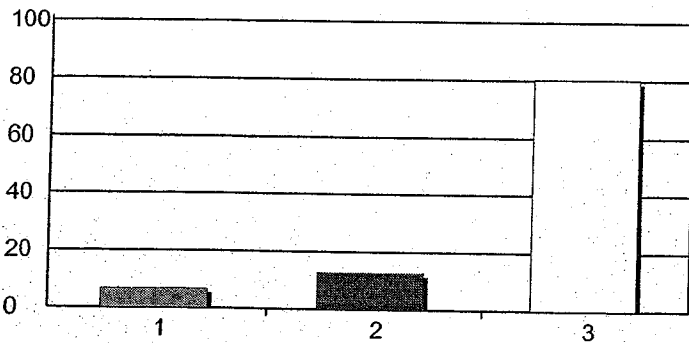
14. Arthritis



1. Not a Problem 7 5%
 2. Not Sure 30 21%
 3. Is a Problem 109 75%
 Total Responses: 146
 Mean: 2.70 Standard Deviation: 0.56

Report Title

5. Obesity



1. Not a Problem

10 7%

2. Not Sure

19 13%

3. Is a Problem

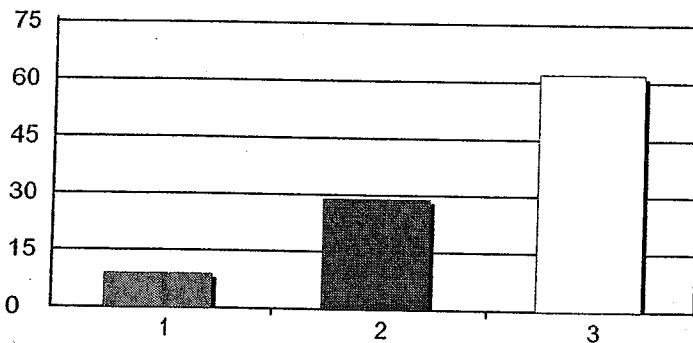
118 80%

Total Responses:

147

Mean: 2.73 Standard Deviation: 0.58

16. Asthma



1. Not a Problem

13 9%

2. Not Sure

42 29%

3. Is a Problem

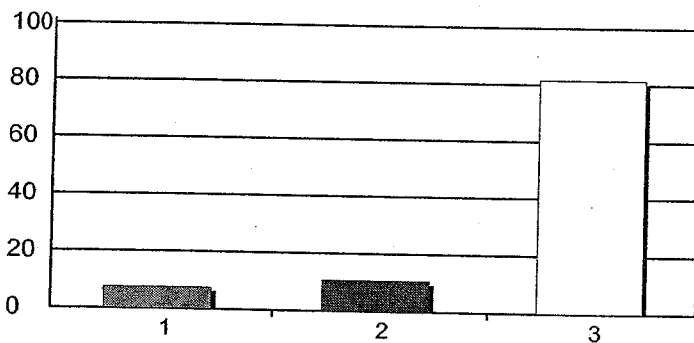
90 62%

Total Responses:

145

Mean: 2.53 Standard Deviation: 0.66

7. Diabetes



1. Not a Problem

11 7%

2. Not Sure

16 11%

3. Is a Problem

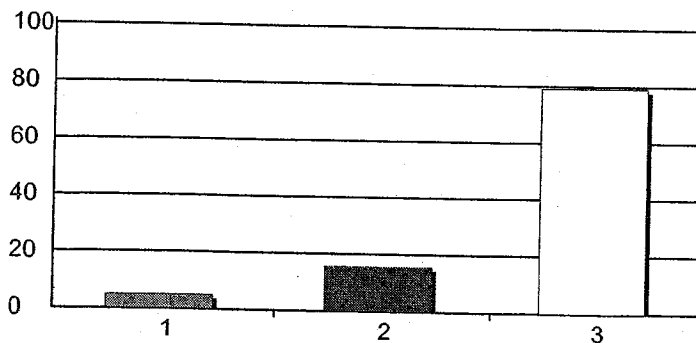
120 82%

Total Responses:

147

Mean: 2.74 Standard Deviation: 0.59

18. Allergies



1. Not a Problem

7 5%

2. Not Sure

23 16%

3. Is a Problem

115 79%

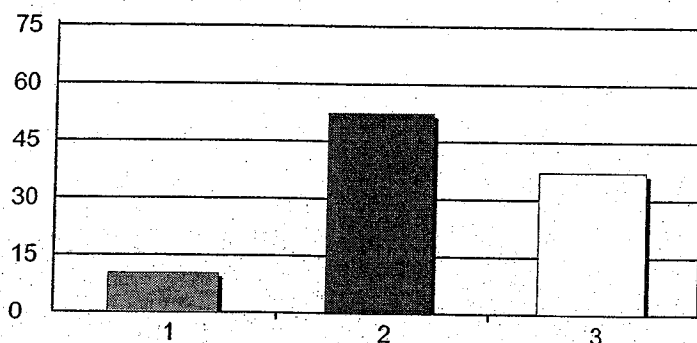
Total Responses:

145

Mean: 2.74 Standard Deviation: 0.54

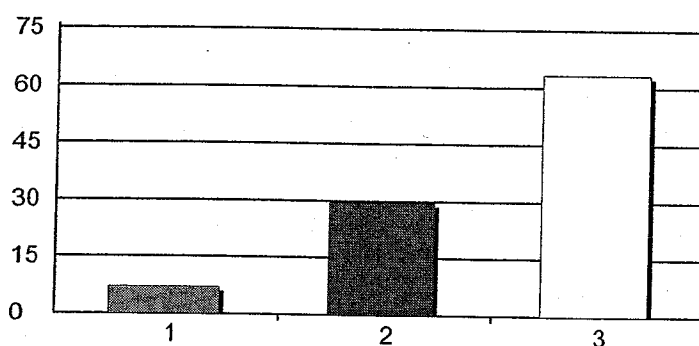
Report Title

9. Osteoporosis



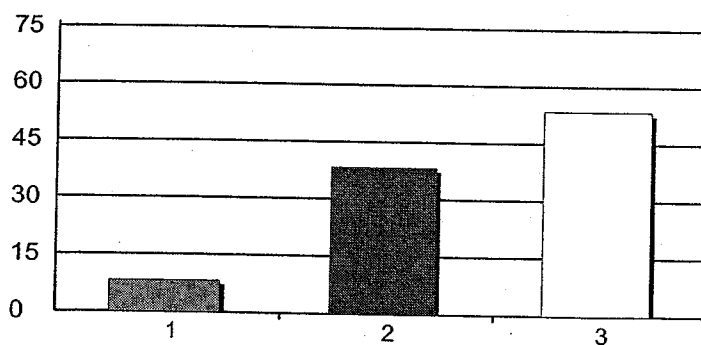
1. Not a Problem	15	10%
2. Not Sure	76	52%
3. Is a Problem	54	37%
Total Responses:	145	
Mean: 2.27	Standard Deviation: 0.64	

20. Dementia/Alzheimer's



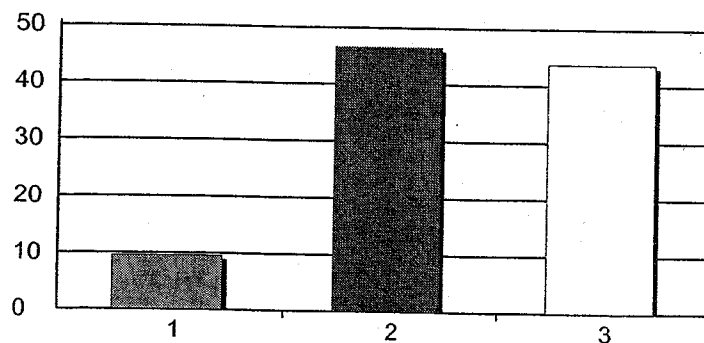
1. Not a Problem	10	7%
2. Not Sure	43	30%
3. Is a Problem	92	63%
Total Responses:	145	
Mean: 2.57	Standard Deviation: 0.62	

1. Hearing loss



1. Not a Problem	12	8%
2. Not Sure	56	38%
3. Is a Problem	78	53%
Total Responses:	146	
Mean: 2.45	Standard Deviation: 0.64	

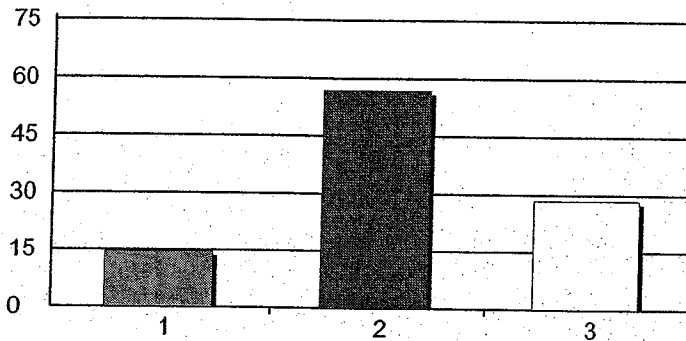
22. Cataracts



1. Not a Problem	14	10%
2. Not Sure	68	47%
3. Is a Problem	64	44%
Total Responses:	146	
Mean: 2.34	Standard Deviation: 0.65	

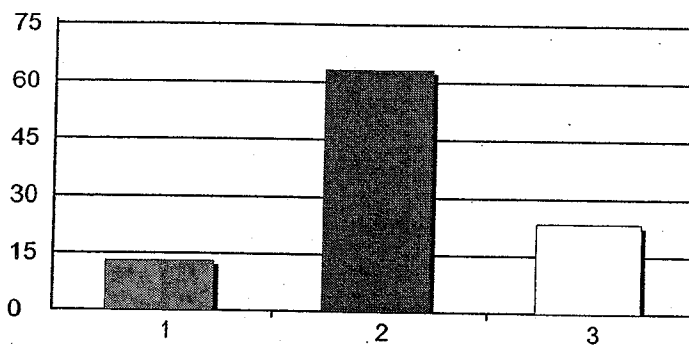
Report Title

3. Glaucoma



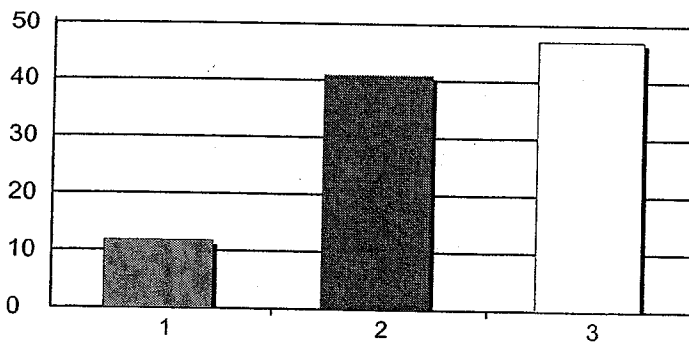
1. Not a Problem 21 15%
 2. Not Sure 82 57%
 3. Is a Problem 41 28%
 Total Responses: 144
 Mean: 2.14 Standard Deviation: 0.64

24. Macular Degeneration



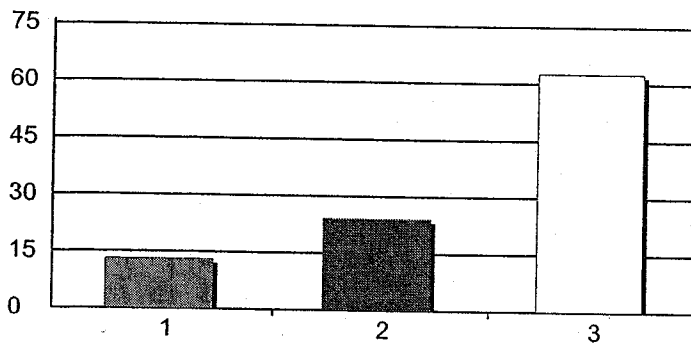
1. Not a Problem 19 13%
 2. Not Sure 92 63%
 3. Is a Problem 34 23%
 Total Responses: 145
 Mean: 2.10 Standard Deviation: 0.60

. Intimate partner violence



1. Not a Problem 17 12%
 2. Not Sure 59 41%
 3. Is a Problem 68 47%
 Total Responses: 144
 Mean: 2.35 Standard Deviation: 0.68

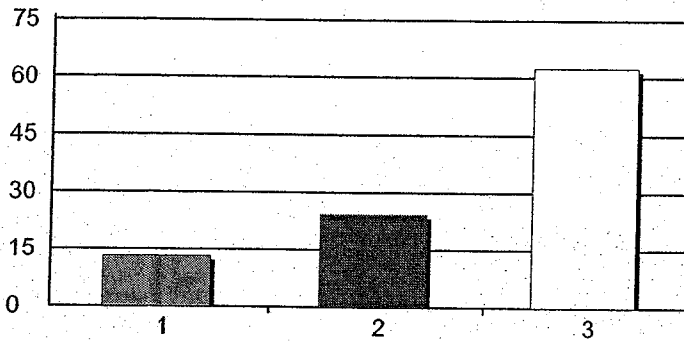
26. Child abuse



1. Not a Problem 19 13%
 2. Not Sure 35 24%
 3. Is a Problem 91 63%
 Total Responses: 145
 Mean: 2.50 Standard Deviation: 0.72

Report Title

7. Motor vehicle accidents



1. Not a Problem

19 13%

2. Not Sure

35 24%

3. Is a Problem

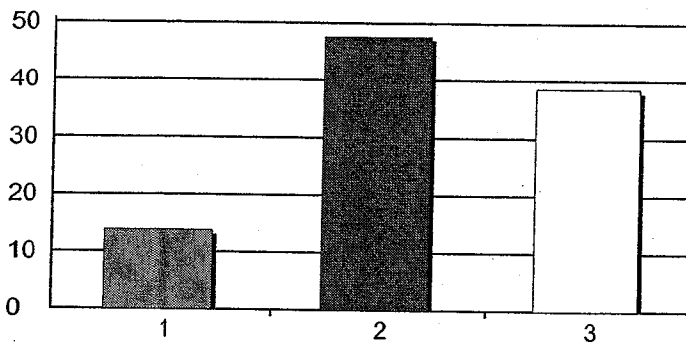
90 62%

Total Responses:

144

Mean: 2.49 Standard Deviation: 0.72

28. Falls or fall-related injuries



1. Not a Problem

20 14%

2. Not Sure

69 48%

3. Is a Problem

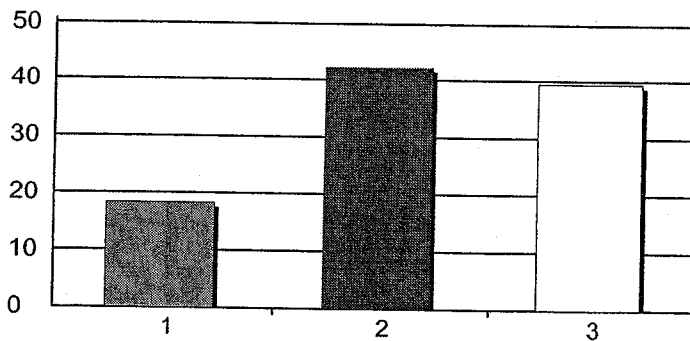
56 39%

Total Responses:

145

Mean: 2.25 Standard Deviation: 0.68

9. Residential fires



1. Not a Problem

26 18%

2. Not Sure

60 42%

3. Is a Problem

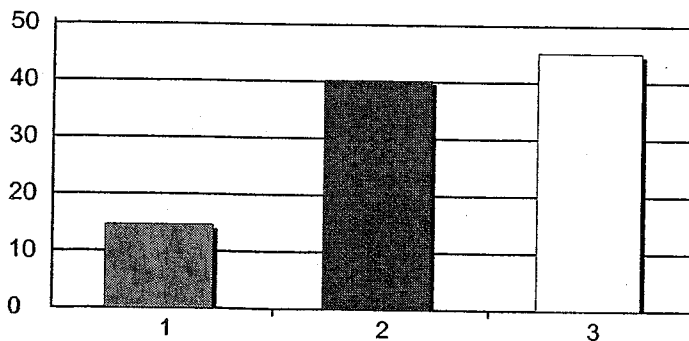
56 39%

Total Responses:

142

Mean: 2.21 Standard Deviation: 0.73

30. Dental care



1. Not a Problem

21 15%

2. Not Sure

58 40%

3. Is a Problem

65 45%

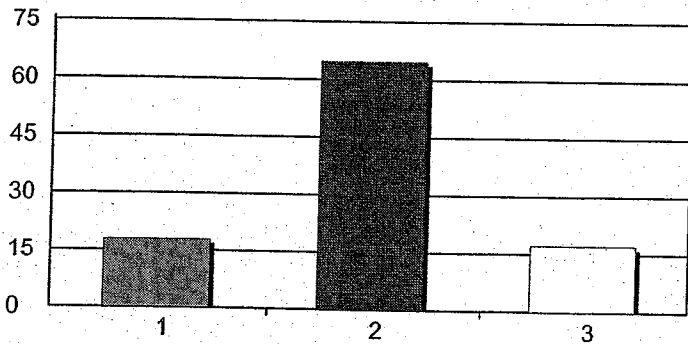
Total Responses:

144

Mean: 2.31 Standard Deviation: 0.71

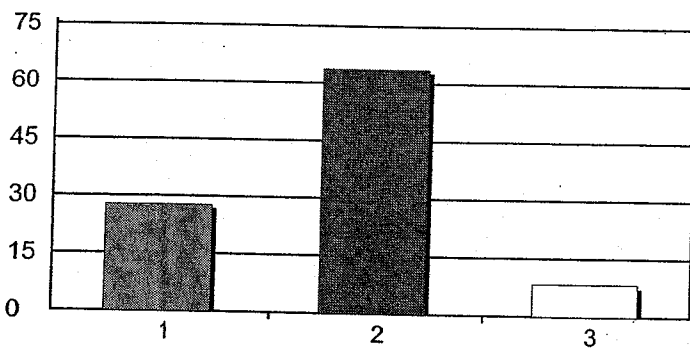
Report Title

1. Leisure accidents



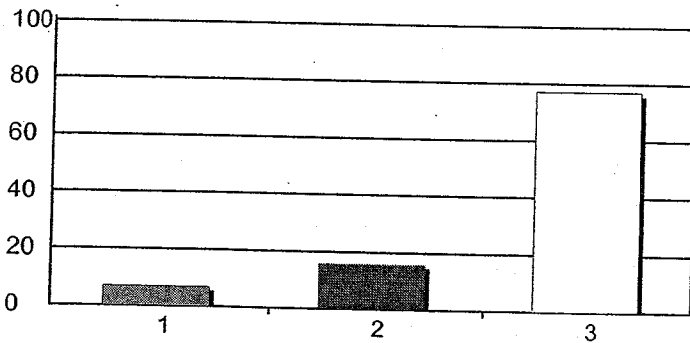
1. Not a Problem 26 18%
 2. Not Sure 94 65%
 3. Is a Problem 25 17%
 Total Responses: 145
 Mean: 1.99 Standard Deviation: 0.60

32. Infant deaths



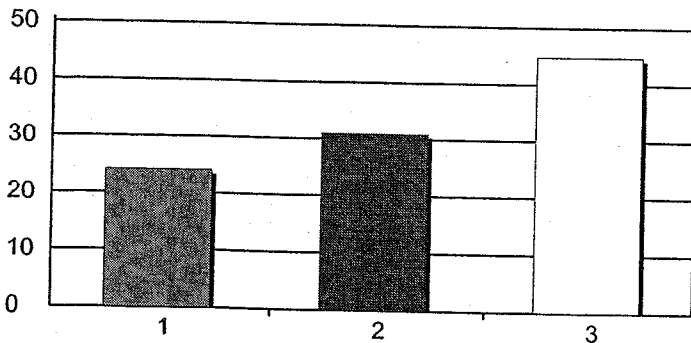
1. Not a Problem 40 28%
 2. Not Sure 92 64%
 3. Is a Problem 12 8%
 Total Responses: 144
 Mean: 1.81 Standard Deviation: 0.57

33. Teenage pregnancy



1. Not a Problem 10 7%
 2. Not Sure 23 16%
 3. Is a Problem 111 77%
 Total Responses: 144
 Mean: 2.70 Standard Deviation: 0.59

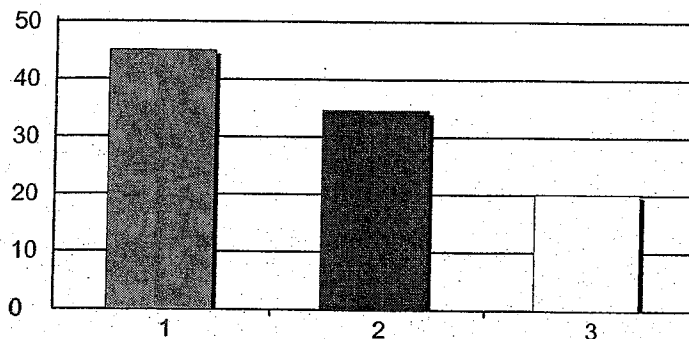
34. Access to adult daycare



1. Not a Problem 35 24%
 2. Not Sure 45 31%
 3. Is a Problem 65 45%
 Total Responses: 145
 Mean: 2.21 Standard Deviation: 0.81

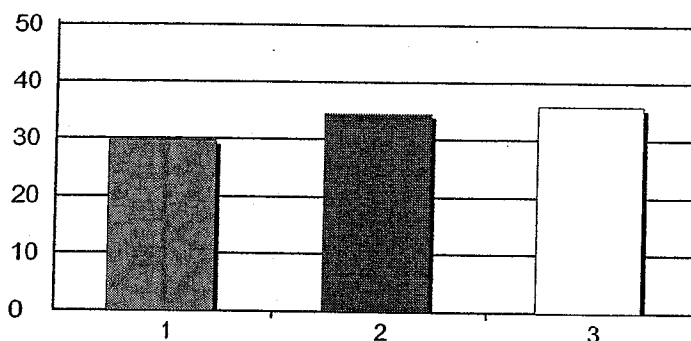
Report Title

5. Access to home health care



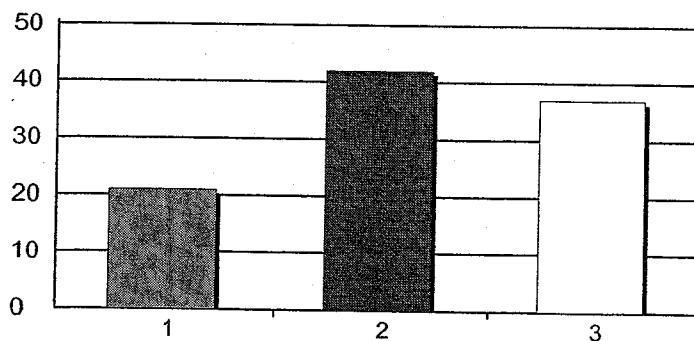
1. Not a Problem 65 45%
 2. Not Sure 50 35%
 3. Is a Problem 29 20%
 Total Responses: 144
 Mean: 1.75 Standard Deviation: 0.77

36. Access to home care (sitter service)



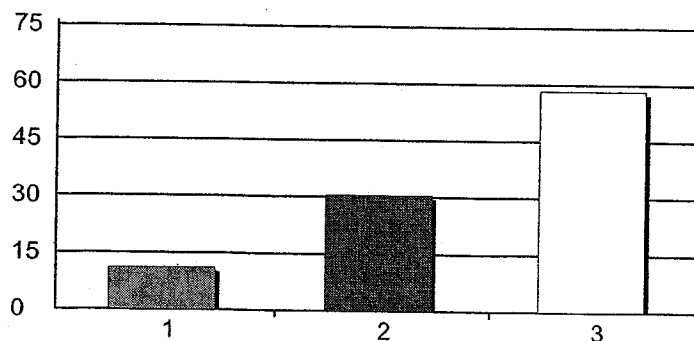
1. Not a Problem 43 30%
 2. Not Sure 50 34%
 3. Is a Problem 52 36%
 Total Responses: 145
 Mean: 2.06 Standard Deviation: 0.81

7. Access to care for special needs children



1. Not a Problem 30 21%
 2. Not Sure 60 42%
 3. Is a Problem 53 37%
 Total Responses: 143
 Mean: 2.16 Standard Deviation: 0.75

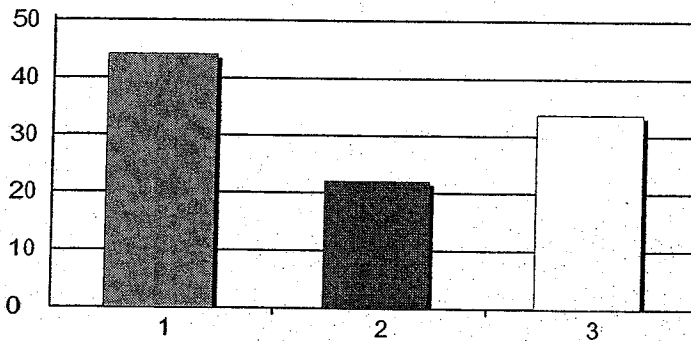
38. Lack of financial resources for medical care



1. Not a Problem 16 11%
 2. Not Sure 44 31%
 3. Is a Problem 84 58%
 Total Responses: 144
 Mean: 2.47 Standard Deviation: 0.69

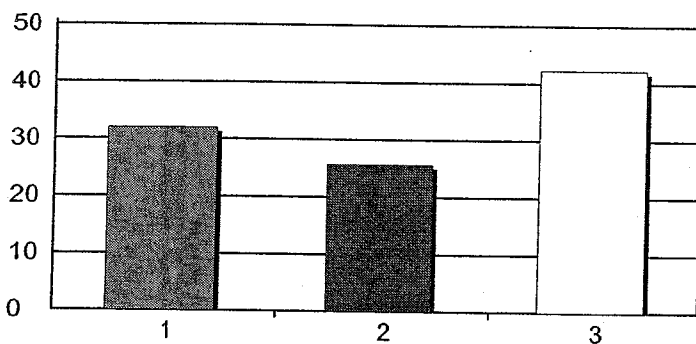
Report Title

9. Access to healthy foods



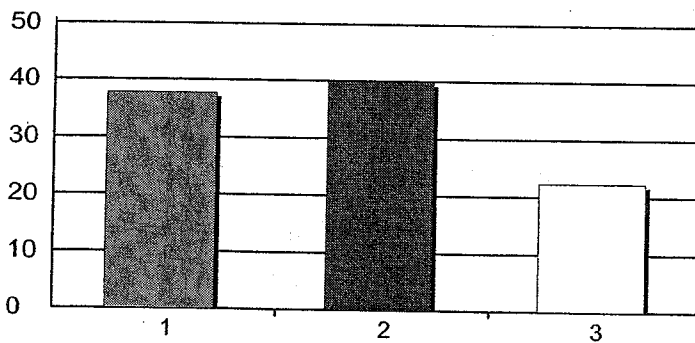
1. Not a Problem 64 44%
 2. Not Sure 32 22%
 3. Is a Problem 49 34%
 Total Responses: 145
 Mean: 1.90 Standard Deviation: 0.88

40. Access to leisure time physical activity



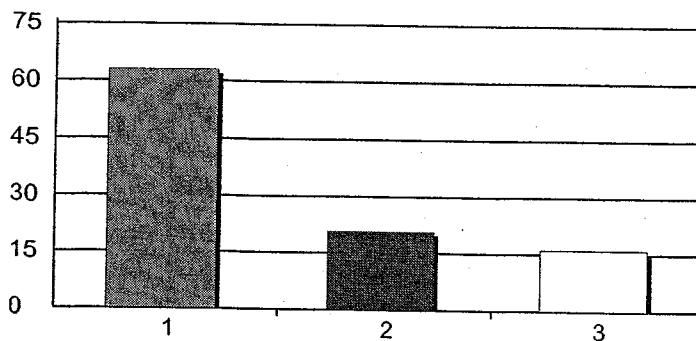
1. Not a Problem 46 32%
 2. Not Sure 37 26%
 3. Is a Problem 61 42%
 Total Responses: 144
 Mean: 2.10 Standard Deviation: 0.86

. Access to transportation to health care



1. Not a Problem 54 38%
 2. Not Sure 57 40%
 3. Is a Problem 32 22%
 Total Responses: 143
 Mean: 1.85 Standard Deviation: 0.76

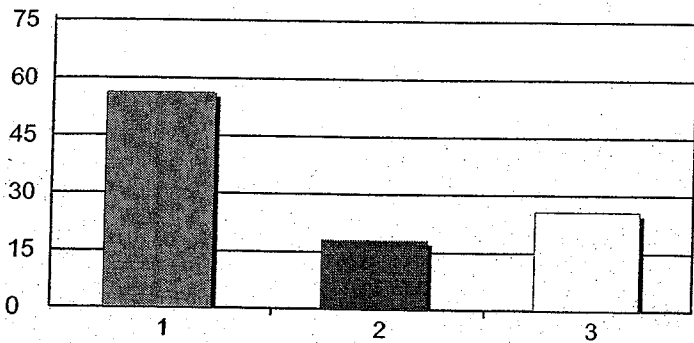
42. Access to nursing home care



1. Not a Problem 90 63%
 2. Not Sure 30 21%
 3. Is a Problem 23 16%
 Total Responses: 143
 Mean: 1.53 Standard Deviation: 0.76

Report Title

3. Access to a primary care provider



1. Not a Problem

81 56%

2. Not Sure

26 18%

3. Is a Problem

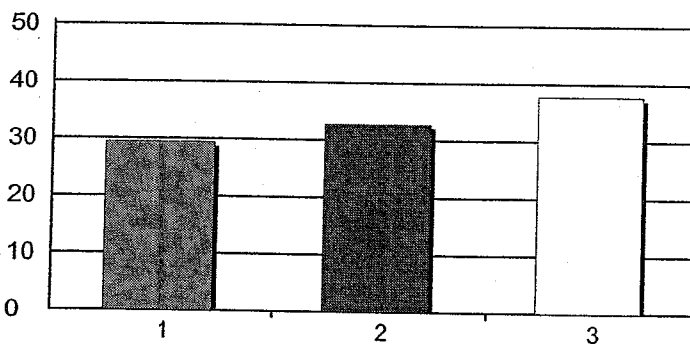
37 26%

Total Responses:

144

Mean: 1.69 Standard Deviation: 0.86

44. Access to medical specialist



1. Not a Problem

42 29%

2. Not Sure

47 33%

3. Is a Problem

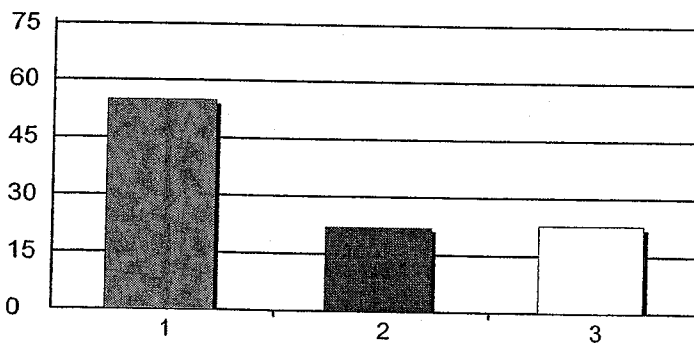
54 38%

Total Responses:

143

Mean: 2.08 Standard Deviation: 0.82

45. Access to medications



1. Not a Problem

79 55%

2. Not Sure

32 22%

3. Is a Problem

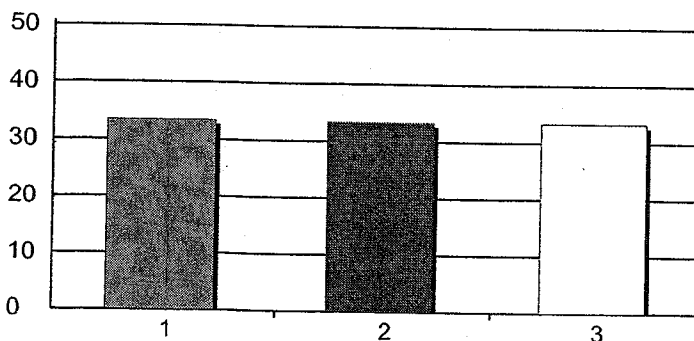
33 23%

Total Responses:

144

Mean: 1.68 Standard Deviation: 0.82

46. Access to education on wellness



1. Not a Problem

48 33%

2. Not Sure

48 33%

3. Is a Problem

48 33%

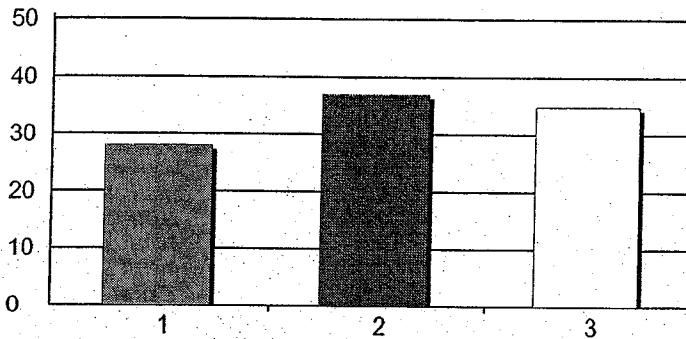
Total Responses:

144

Mean: 2.00 Standard Deviation: 0.82

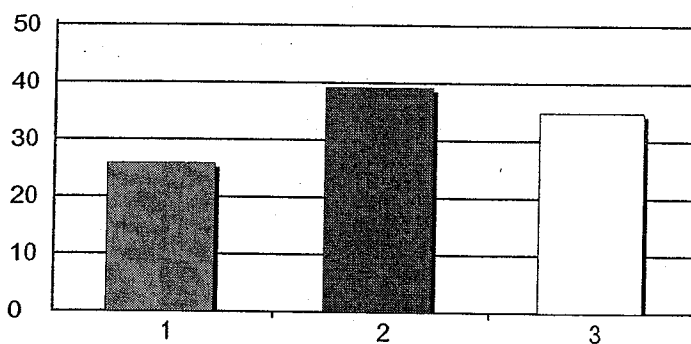
Report Title

7. Access to education on healthy lifestyles



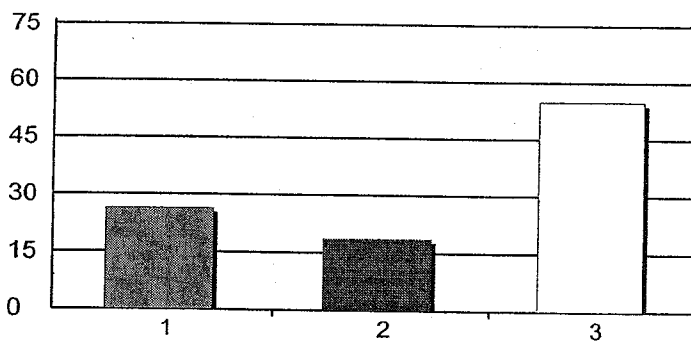
1. Not a Problem 40 28%
 2. Not Sure 53 37%
 3. Is a Problem 50 35%
 Total Responses: 143
 Mean: 2.07 Standard Deviation: 0.79

48. Access to education on prevention



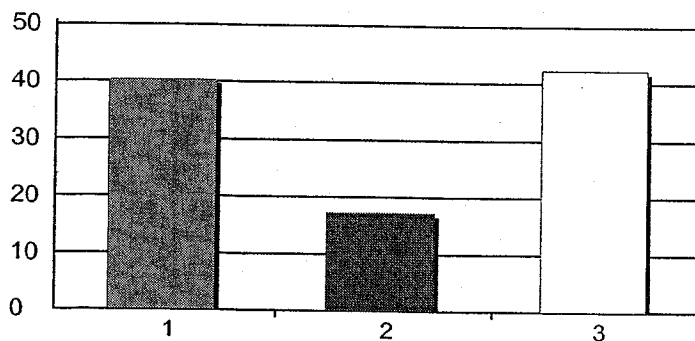
1. Not a Problem 37 26%
 2. Not Sure 56 39%
 3. Is a Problem 50 35%
 Total Responses: 143
 Mean: 2.09 Standard Deviation: 0.78

49. Access to facilities for exercise



1. Not a Problem 38 26%
 2. Not Sure 27 19%
 3. Is a Problem 79 55%
 Total Responses: 144
 Mean: 2.28 Standard Deviation: 0.86

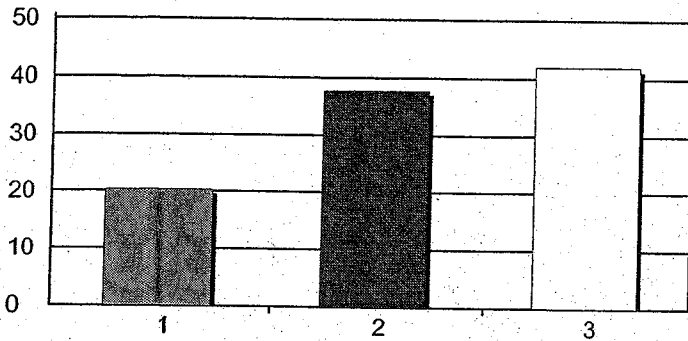
50. Access to parks for recreation



1. Not a Problem 58 40%
 2. Not Sure 25 17%
 3. Is a Problem 61 42%
 Total Responses: 144
 Mean: 2.02 Standard Deviation: 0.91

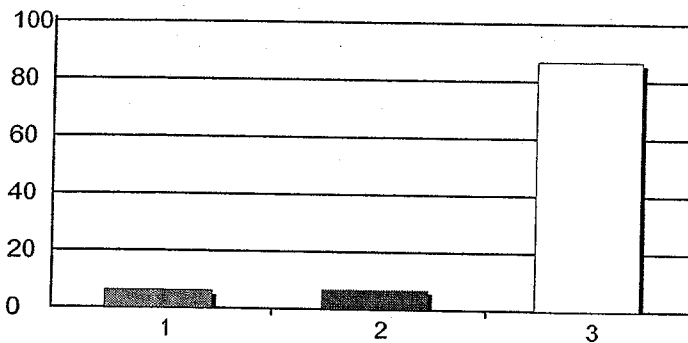
Report Title

1. Illiteracy



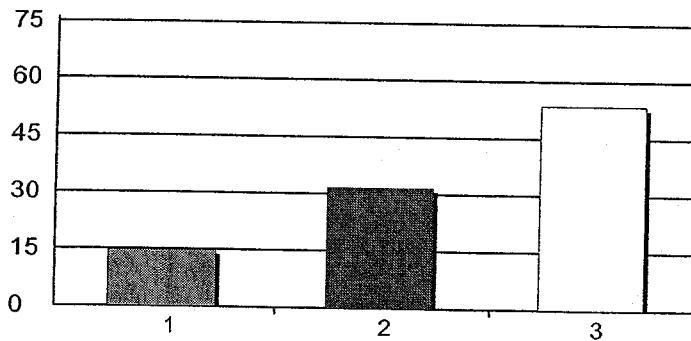
1. Not a Problem 29 20%
2. Not Sure 54 38%
3. Is a Problem 60 42%
Total Responses: 143
Mean: 2.22 Standard Deviation: 0.76

52. Tobacco use



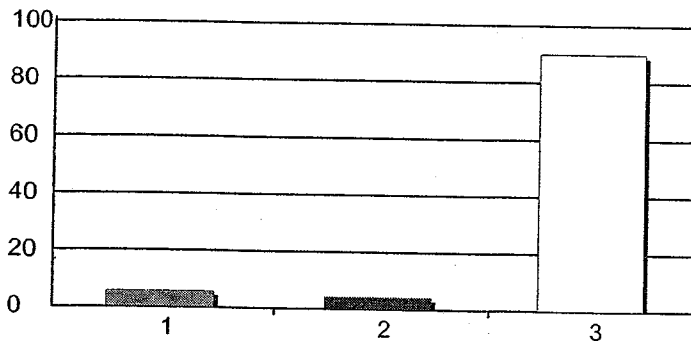
1. Not a Problem 9 6%
2. Not Sure 10 7%
3. Is a Problem 125 87%
Total Responses: 144
Mean: 2.81 Standard Deviation: 0.53

3. Violent crime



1. Not a Problem 21 15%
2. Not Sure 45 32%
3. Is a Problem 76 54%
Total Responses: 142
Mean: 2.39 Standard Deviation: 0.73

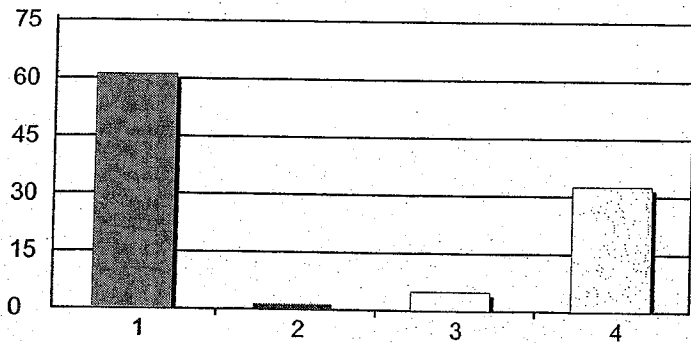
54. Alcohol and Drug Abuse



1. Not a Problem 8 6%
2. Not Sure 6 4%
3. Is a Problem 128 90%
Total Responses: 142
Mean: 2.85 Standard Deviation: 0.50

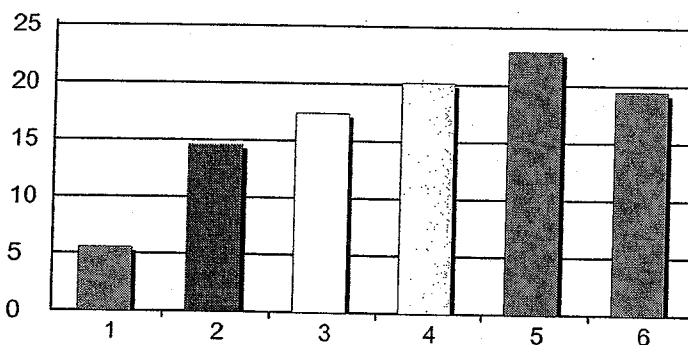
Report Title

5. Do you consider yourself:



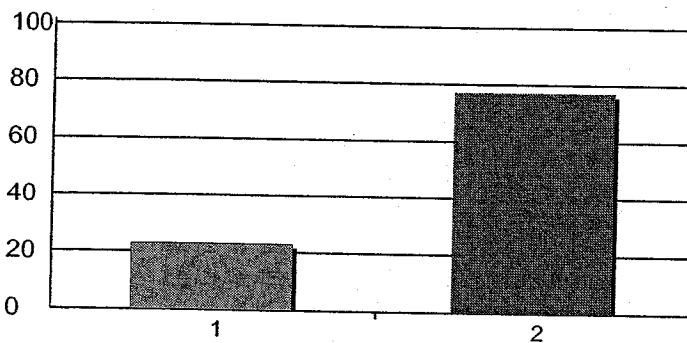
1. Overweight 88 61%
 2. Underweight 2 1%
 3. Obese 7 5%
 4. Just Right 47 33%
 Total Responses: 144
 Mean: 2.09 Standard Deviation: 1.40

56. Age range:



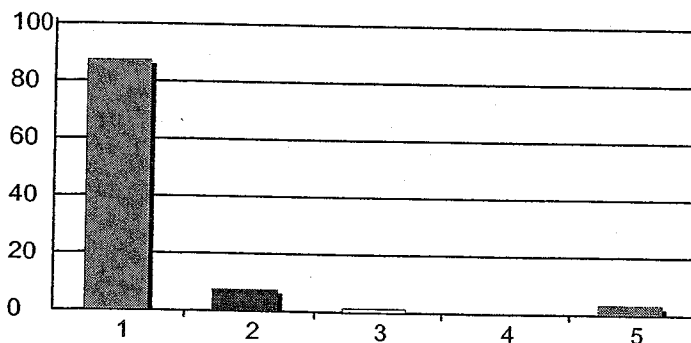
1. 18 - 24 8 6%
 2. 25 - 34 21 15%
 3. 35 - 44 25 17%
 4. 45 - 54 29 20%
 5. 55 - 64 33 23%
 6. 65 + 28 19%
 Total Responses: 144
 Mean: 3.99 Standard Deviation: 1.51

7. Are you:



1. Male 33 23%
 2. Female 111 77%
 Total Responses: 144
 Mean: 1.77 Standard Deviation: 0.42

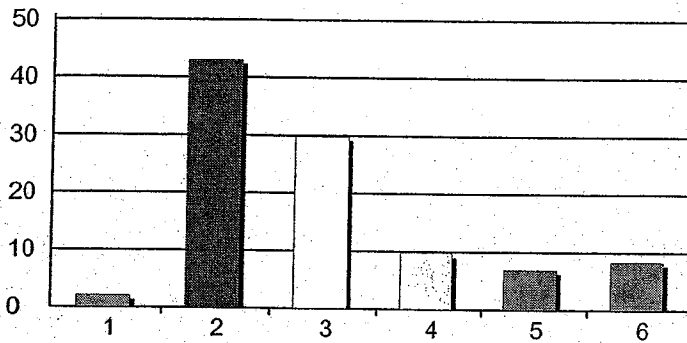
58. Race:



1. Caucasian 125 87%
 2. African American 11 8%
 3. Native American 2 1%
 4. Asian/Pacific Islander 0 0%
 5. Other 5 3%
 Total Responses: 143
 Mean: 1.24 Standard Deviation: 0.80

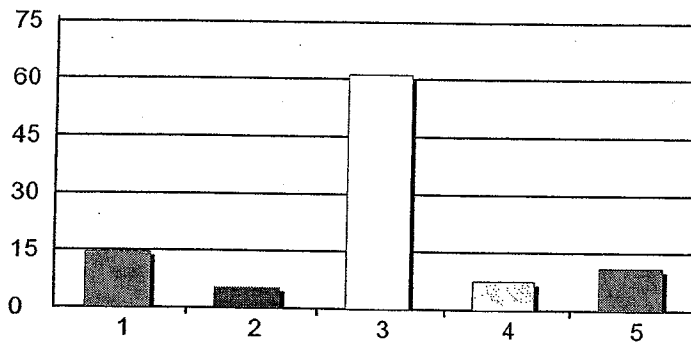
Report Title

9. School:



1. Less than high school	3	2%
2. High school graduate/GED	62	43%
3. Some college	43	30%
4. Associate degree	14	10%
5. Bachelors degree	10	7%
6. Advanced degree	12	8%
Total Responses:	144	
Mean: 3.01	Standard Deviation: 1.28	

60. What type of insurance do you have?



1. Medicare	21	15%
2. TennCare	8	6%
3. Private Insurance	88	61%
4. Other	11	8%
5. No Insurance	16	11%
Total Responses:	144	
Mean: 2.95	Standard Deviation: 1.08	

Comment Report Title

Comments

Thank God! for Health Dept. they were a blessing to me and the staff.

Comments

#50 - I changed my answer from 'Not a problem' to 'Is a problem' because Gadsden needs a park.
Also, Gadsden needs it's own sewage system!!!

Comments

Accessibility, education, preventive care, health care providers, transportation, and funding are vital for any state, county, & community to maintain a healthy population. Crockett County is no different.

Comments

Obesity causing so many of our health problems.
How to motivate us to do better??

Comments

Everything needs improving

Comments

Also mental health issues in Crockett County.
Did not see this on any of the problems.

Comment Report Title

Comments

getting and paying for health insurance is very difficult!!

Comments

None

Comments

?

Comments

need to offer insurance to every body based on the need of it not the color or income of a person.

Comments

I feel that we need to make it mandatory to drug test for government benefits! There are a lot of people abusing the system. I have to take a drug test to keep and get a job so those drawing benefits should have to

Comments

I feel drugs are a growing problem. It seems that we have a lot of cancer in this county. Not sure if chemicals play a part in this problem.

Attachment D

Setting Priorities for Health Status Improvement

Hanlon Method:

$$\text{Opportunity} = (A + 2B)C$$

Size of Problem

Seriousness of Problem

Effectiveness of Interventions

A=Size

usually defined by prevalence of a condition, characteristic, or disease in entire population (but can be among sub-groups)

Percent of population
with health problem

Score

25% +

9-10

10-24%

7 - 8

1-9%

5 - 6

0.1-0.9%

3 - 4

0.01-0.09%

1 - 2

B=Seriousness

ually defined by urgency to intervene, severity (leads
leath?), disproportionate among vulnerable
ulations, and/or economic impact.

W Serious

Score

ry Serious

9-10

rious

6 - 8

oderately Serious

3 - 5

t Serious

0 - 2

C=Effectiveness of Available Interventions

usually defined by "best real world" expectations based on outcome evaluations of successful interventions in similar communities including: effectiveness and efficiency (in light of available resources)

Effectiveness

Score

Very Effective (80%+)

10

Relatively Effective (60-79%)

8 - 9

Effective (40-59%)

6 - 7

Moderately Effective (20-39%)

4 - 5

Relatively Ineffective (<20%)

0 - 3

$$\text{Opportunity} = (A + 2B)C$$

Smoking

$$A = 9.5$$

$$B = 9.5$$

$$C = 4.5$$

28.25

AIDS

$$A = 3.5$$

$$B = 9.5$$

$$C = 4.5$$

101.25

Illiteracy

$$A = 7.5$$

$$B = 7.5$$

$$C = 8.5$$

191.25

Attachment E

Crockett County Community Health Assessment
Prioritization of Health Issues
Size of Issues

Heart Conditions

Deaths from Diseases of the Heart Rate Per 100,000

	Crockett	TN
2010	431.9	228.3
2009	493.7	228.0
2008	594.4	238.2

Source: Tennessee Department of Health, Vital Statistics

Heart disease is the leading cause of death and a major cause of disability nationally.
Heart disease causes 1 in 4 deaths.

Source: Center for Disease Control and Prevention

High Blood Pressure

Death Rate from Stroke by County

	Crockett	US
Stroke	145.7	47.0

Source: Community Health Status Indicators, Department of Health and Human Services, 2009

Have you ever been told by a doctor, nurse, or other health professional that you had high blood pressure?

	Southwest TN	TN
2010	35.6	35.4
2009	36.4	32.6
2007	30.2	33.8

Behavioral Risk Factor Surveillance Survey

Taking Blood Pressure Medication

	Southwest TN	TN
2010	88.5	85.6
2009	83.3	81.8
2007	89.0	84.0

Source: Behavioral Risk Factor Surveillance Survey, Tennessee Department of Health

All Cancers

Death Rate by County

	Crockett	US
Breast Cancer	38.5	24.1
Colon Cancer	31.8	17.5
Lung Cancer	97.6	52.6

Source: Community Health Status Indicators, Department of Health and Human Services, 2009

In 2008, there were 11,957,599 men and women who had a history of cancer in all sites. 5,505,862 were men 6,451,737 were women.

Source: National Cancer Institute

Cancer, continued

Deaths from Malignant Neoplasms Rate per 100,000

	Crockett	TN
2010	219.4	212.9
2009	223.2	216.2
2008	225.5	213.3

Source: Tennessee Department of Health

Arthritis

Have you ever been told by a doctor or other health professional that you have some form of arthritis, rheumatoid arthritis, gout, lupus, or fibromyalgia?

	Southwest TN	TN
2009	27.7	25.9
2007	40.4	34.0
2005	33.6	29.7

Are you limited because of joint or arthritis symptoms?

	Southwest TN	TN
2007	40.7	39.5
2005	40.0	37.7

Source: Tennessee Behavior Risk Factor Surveillance Survey, Tennessee Department of Health

Obesity

Adult Obesity

	Crockett	TN	US Benchmark
	33%	31%	25%

Source: County Health Rankings

Adults with BMI > 25, Obese

	Southwest TN	TN
2010	70.2	67.8
2009	69.9	69.0
2008	70.5	68.0

Have you participated in physical activities or exercise in the past month?

	Southwest TN	TN
2010	72.7	70.1
2009	63.5	69.0
2008	69.7	71.1

Source: Tennessee Department of Health

Asthma

Each year, nationwide, asthma accounts for more than 10 million outpatient visits and 500,000 hospitalizations.

Asthma is the third-ranking cause of hospitalization of children.

The annual cost of asthma is estimated to be nearly \$18 billion.

Source: Tennessee Department of Health; Asthma and Allergy Foundation of America

Diabetes

Have you ever been told by a doctor that you have diabetes?

	Southwest TN	TN
2010	12.0	11.3
2009	11.3	10.3
2008	11.1	10.4

Are you now taking insulin?

	Southwest TN	TN
2010	39.7	33.5
2009	29.8	30.4
2008	48.2	32.1

Have you ever been told that diabetes has affected your eyes or that you had retinopathy?

	Southwest TN	TN
2010	28.2	25.7
2009	33.2	27.4
2008	12.0	21.0

Source: Tennessee Department of Health

Allergies

1 in 5 Americans suffer from all types of allergies.

Allergy has increased in prevalence since the 1980s across age, sex, and racial groups.

Approximately 50 million people experience allergies.

Allergies are the 5th leading chronic disease among all ages.

Source: Asthma and Allergy Foundation of America

Dementia/Alzheimer's

16.4% of the Crockett County population is over the age of 65

Risk for dementia and Alzheimer's increases with age

The population of individuals over the age of 65 is growing.

The estimated percent change from 2011 to 2015 is 5.96%.

The risk of the disease doubles every five years over the age of 65.

Half a million under 65 in the US have some form of dementia.

1 in 4 individuals acts as a caregiver in the US.

Source: US Census Bureau; Alzheimer's Foundation

Hearing Loss

14.9% of children experience hearing loss

5 per 1000 parents reported loss in children

Between 1.1-1.4 per 1,000 demonstrated loss

About 20% with hearing loss experience Down's or Usher Syndrome

Birth complications and low birth weight contribute to hearing loss

Special education costs are \$11,006 per child

Source: Centers for Disease Control

Hearing loss affects more than 4 million over 65 and 6 million under 65 nationally

Age is tied to hearing loss: 43% reporting hearing loss are over 65

Men are more likely than women to experience hearing loss

People with an income of less than \$20,000 are more likely to experience hearing loss. Crockett County

Hearing Loss, continued

per capita income is \$19,742 with average household income of \$36,556

Caucasians are more likely to experience hearing loss than African-Americans

Source: National Academy on an Aging Society; US Census Bureau

Intimate Partner Violence

For homicides, intimate partners committed 30% of homicides of females and 5% of homicides of males.

21.5% of victim offender relationships were intimate partner relationships for female victims.

3.6% of victim offender relationships were intimate partner relationships for male victims.

It is hard to know the exact presence of intimate partner violence in a community.

Source: Bureau of Justice Statistics

Nearly 3 in 10 women and 1 in 10 men has experienced rape, physical violence, and stalking by a partner with Intimate Partner Violence impact.

Intimate Partner Violence resulted in 2,340 deaths in 2007. Of these deaths, 70% were female and 30% were male.

The medical care, mental health services, and lost productivity cost was \$8.3 billion up to 2003.

Source: Centers for Disease Control and Prevention

Child Abuse**Commitment to State Custody Rate**

	Crockett	TN
2009	1.8	3.9
2008	0.8	5.0

Reported Child Abuse Cases

	Crockett	TN
2009	3.3%	3.8%
2008	3.2%	4.1%

Substantiated Child Abuse/Neglect Cases

	Crockett	TN
2009	4.2	7.0
2008	3.7	8.4

Source: Tennessee Commission on Children and Youth

Motor Vehicle Accidents**Death Rate by County for Motor Vehicle Injuries**

	Crockett	US
Motor Vehicle Injuries	81.3	14.6

Source: Community Health Status Indicators, Department of Health and Human Services, 2009

Rate of Total Fatal Crashes

	Crockett	TN
2008	0.398	0.213
2007	0.000	0.251

Motor Vehicle Accidents, continued**Rate of Alcohol Involved Fatalities**

	Crockett	TN
2008	0.141	0.053
2007	0.000	0.062

Source: 2005-2008 Fatal Crashes and Licensed Drivers; Tennessee Traffic Crash Data; 2005-2008 Total Fatalities, Tennessee Department of Safety

Tobacco Use

Total Potential Years of Life Lost in 2004 Nationally- 5,392,787
Annual Smoking Attributed Mortality- 379,725
Annual Smoking Attributable Productivity Losses \$103,140,785
Smoking Attributable Neonatal Expenditures \$2,613,657,332

Source: Centers for Disease Control and Prevention

Current Cigarette Smoking Rank for Tennessee Out of 50 states

2010- 37th

2009- 41st

2008- 45th

2007- 46th

Source: Tennessee Department of Health

Alcohol and Drug Abuse**Alcohol and Drug Related Arrests**

	Crockett	TN
2006	12.74	29.37
2007	9.40	31.03
2008	8.83	28.64

Combined Alcohol and Drug Related Hospitalizations

	Crockett	TN
2006	3.39	3.72
2007	2.61	3.61
2008	1.48	3.60

Source: Tennessee Department of Health, Division of Health Statistics

Influenza

Tennessee in CDC Region 4 was not above the nationwide baseline for time period up to February 2012. Nationwide baseline was 2.4%.

Outpatient visits were at 1.7%.

There were 2 pediatric deaths due to pneumonia or flu in the US from 2011-2012.

Influenza hospitalizations may have been connected to asthma, cardiovascular disease, chronic lung disease, immune suppression, metabolic disorder, neurologic disorder, neuromuscular disorder, obesity, pregnancy, and renal disease.

Tennessee was among 54 states that experienced minimal flu activity.

Report of influenza was sporadic in TN rather than widespread.

Source: Centers for Disease Control

Teen Pregnancy**Live Births Per 1,000 Females Ages 10-14**

	Caucasian	African-American	TN
2010	-	-	0.6
2009	4.7	-	0.6
2008	-	-	0.8

Live Births Per 1,000 Females Ages 15-17

	Caucasian	African-American	Other	TN
2010	32.0	-	4.8	20.2
2009	28.3	-	-	24.0
2008	28.9	-	-	27.3

Source: Tennessee Department of Health

Attachment F

Attachment F Community Resources

Crockett County Community Health Assessment Prioritization of Health Issues Effectiveness of Interventions

The following is a list of community resources for each health issue identified by the community committee. The list contains community agencies and public entities that specifically work with a particular health issue as well as potential agencies that can become partners with Crockett County for specific health issues.

Heart Condition

American Heart Association
Physician Clinics
Local churches
Community Senior Centers
American Association of Retired Persons

High Blood Pressure

American Heart Association
American Stroke Association
Physician Clinics
Community Senior Centers

Cancer

American Cancer Society
Physician Clinics
Local Churches
Community Senior Centers
American Association of Retired Persons

Arthritis

Arthritis Foundation
Physician Clinics
Local Fitness Centers
American Association of Retired Persons
Community Senior Centers

Obesity

American Heart Association
American Diabetes Association
American Stroke Association
Physician Clinics
Community Senior Centers
Crockett County School District
Crockett County Parks and Recreation Department
Local Health and Fitness Clubs
Local Churches
Afterschool Programs

Local Retirement and Nursing Homes

Asthma

Asthma and Allergy Foundation
Physician Clinics
Crockett County School District

Diabetes

American Diabetes Association
Physician Clinics
Crockett County School District
Community Senior Centers
Local Churches

Allergies

Asthma and Allergy Foundation
Crockett County School District
Physician Clinics

Dementia/Alzheimer's

Tennessee Commission on Aging and Disabilities
Alzheimer's Association
Local churches

Hearing Loss

American Association of Retired Persons
Tennessee Commission on Aging and Disabilities
Tennessee Division of Rehab Services
TN Career Center

Intimate Partner Violence

Exchange Club Carl Perkins
Crockett County Department of Human Services
Friendship Police Department
Bells Police Department
Alamo Police Department

Child Abuse

Exchange-Club Carl Perkins
Department of Children's Services
Department of Human Services
Afterschool Programs
Local churches
Crockett County School District

Motor Vehicle Accidents

Tennessee Highway Patrol
Tennessee Department of Transportation

Crockett County School District
Friendship Police Department
Bells Police Department
Alamo Police Department

Tobacco Use

American Cancer Society
Physician Clinics
Crockett County School District
City and County Government
Crockett County Sheriff
Bells Police Department
Alamo Police Department
Friendship Police Department

Alcohol and Drug Abuse

Crockett County School District
City and County Government
Crockett County Sheriff
Bells Police Department
Alamo Police Department
Friendship Police Department
Crockett County Circuit Court
Tennessee Department of Correction