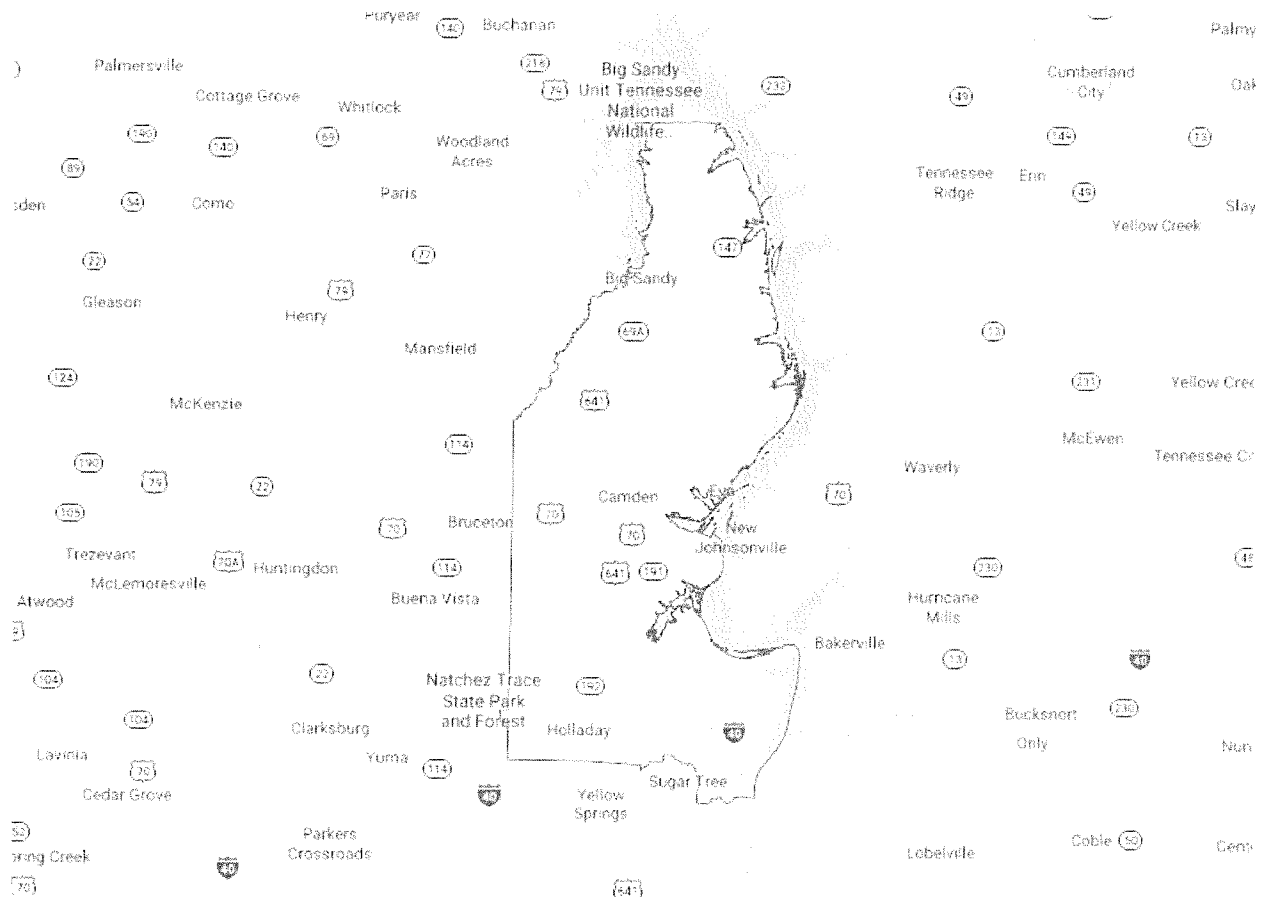


# **Community Health Needs Assessment**

## **Benton County, Tennessee**



**Conducted by:**

**Department of Community Development**

**Victoria S. Lake**

**Update October 2021**

**In fulfillment of requirements of the Patient Protection and Affordable Care Act  
Pub.L.No.111-148, 124 Stat. 119, enacted March 23, 2010; and Department of Treasury  
Internal Revenue Service 26 CFR Parts 1, 53, and 62 *Additional Requirements for  
Charitable Hospitals; Community Health Needs Assessments for Charitable Hospitals;  
Requirement of a Section 4959 Excise Tax Return and Time for filing the Return.***

RESOLUTION OF THE BOARD OF TRUSTEES  
OF  
JACKSON-MADISON COUNTY GENERAL HOSPITAL DISTRICT  
AND  
CAMDEN GENERAL HOSPITAL, INC.  
AND  
BOLIVAR GENERAL HOSPITAL, INC.  
AND  
MILAN GENERAL HOSPITAL, INC.  
AND  
DYERSBURG HEALTH  
AND  
MARTIN HEALTH  
AND  
PATHWAYS OF TENNESSEE, INC.

COMMUNITY HEALTH NEEDS ASSESSMENT APPROVAL

WHEREAS, the Patient Protection and Affordable Care Act, enacted March 10, 2010, requires public and not-for-profit hospitals to perform a Community Health Needs Assessment for each hospital; and

WHEREAS, the staff of the District has conducted such an Assessment and prepared the report as required for each of its hospitals; and

WHEREAS, the Assessments were prepared in accordance with IRS rules and regulations, as amended, regarding Community Health Needs Assessments for Tax Exempt Hospitals; and

WHEREAS, the Board finds that the Assessments substantially meet the requirements of the of the Patient Protection and Affordable Care Act and the applicable IRS rules and regulations, and that the Implementation Strategies set forth in the Assessments shall be implemented in accordance with Management recommendations.

NOW, THEREFORE, BE IT RESOLVED, that the Community Health Needs Assessments given to the Board are approved and adopted.

ADOPTED, this the 26th day of October, 2021.

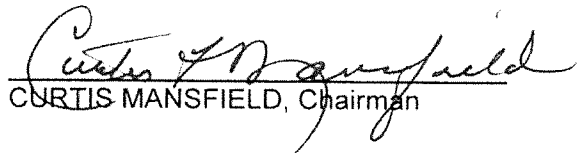
  
CURTIS MANSFIELD, Chairman

EXHIBIT: 2-5



# 2021 Community Health Needs Assessment

Executive Summary

# 2021 Assessment

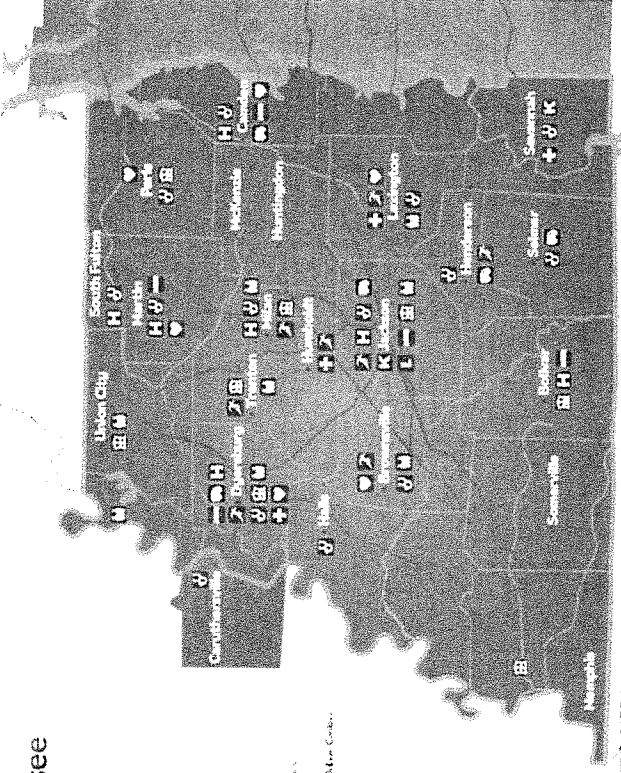
Assessments were conducted for Madison, Benton, Chester, Crockett, Dyer, Gibson, Haywood, Hardeman, Weakley, and for Pathways as a mental health hospital.

The 2021 Assessment was an update of those conducted 2012, 2015, and 2018.



## Services

- Hospitals**  
Benton, Chester, Crockett, Dyer, Gibson, Haywood, Madison, Weakley
- Medical Centers**  
Benton, Chester, Crockett, Dyer, Gibson, Haywood, Madison, Weakley
- West Tennessee Medical Group**  
Benton, Chester, Crockett, Dyer, Gibson, Haywood, Madison, Weakley
- Heart**  
Benton, Chester, Crockett, Dyer, Gibson, Haywood, Madison, Weakley
- Hospital Home Health**  
Benton, Chester, Crockett, Dyer, Gibson, Haywood, Madison, Weakley
- Pathways**  
Benton, Chester, Crockett, Dyer, Gibson, Haywood, Madison, Weakley
- Sleep Centers**  
Benton, Chester, Crockett, Dyer, Gibson, Haywood, Madison, Weakley
- Sports Plus Centers**  
Benton, Chester, Crockett, Dyer, Gibson, Haywood, Madison, Weakley
- Kirkland Cancer Center**  
Benton, Chester, Crockett, Dyer, Gibson, Haywood, Madison, Weakley
- Lift Wellness Center**  
Benton, Chester, Crockett, Dyer, Gibson, Haywood, Madison, Weakley
- EMS**  
Benton, Chester, Crockett, Dyer, Gibson, Haywood, Madison, Weakley

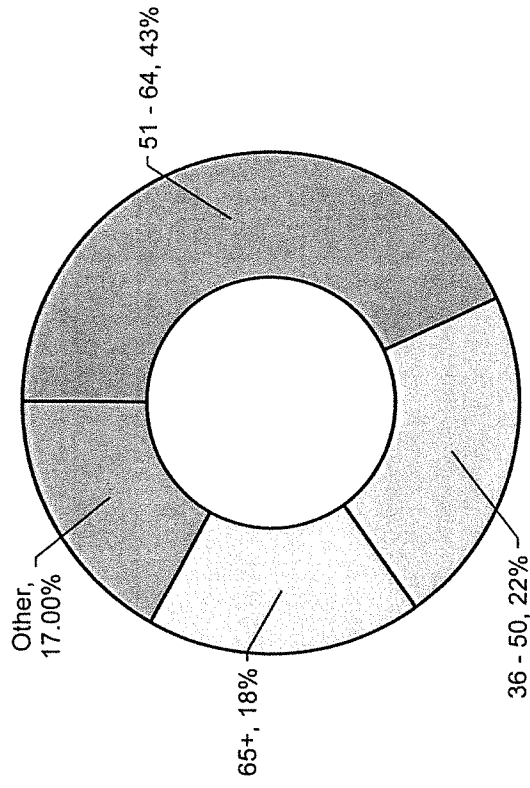


# Methodology

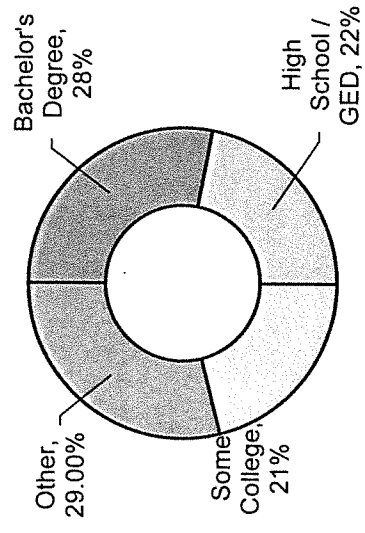
- The first stage of the Update process involved gathering secondary data from multiple sources for each county.
- The second step in the Community Health Needs Assessment Update process consisted of creating a survey to collect data from residents on local health issues. The survey consisted of 49 questions that asked basic demographics of age, race, education level, insurance, county of residence, presence or absence of specific health issues, access to care, physical activity, health information, and ten questions on adverse childhood experiences prior to 18th birthday. Respondents were requested to answer a simple “yes” or “no” to specific health issues and adverse childhood experiences.
- The survey instrument was distributed by hand during community wide COVID-19 vaccination clinics at Lane College and Humboldt Medical Center on March 20, 2021; and Jackson-Madison County General Hospital on March 30, 2021. **Data from 1,895 completed surveys was collected.**

# Respondents

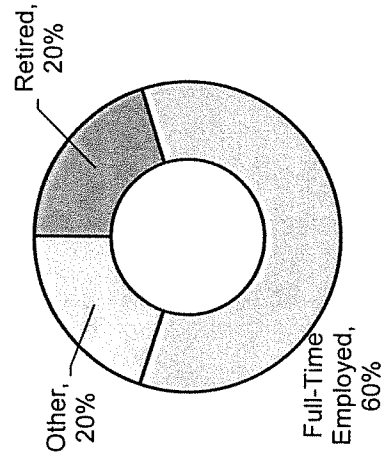
By Age



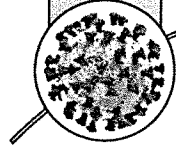
Education Level



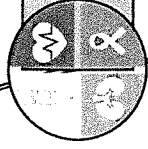
Employment Status



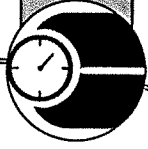
# Priority Health Issues Acute Care



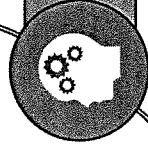
COVID-19



Chronic Health Conditions



Obesity



Mental Health & Substance Abuse

# Priority Behavioral Health Issues Pathways

Depression

Domestic Violence/Victim Management

Co-Occurring Mental Health & Substance Abuse

Alcohol, Drug, and Prescription Drug Abuse (emphasis on Opioid Crisis)

Suicide



## Table of Contents

West Tennessee Healthcare Community Needs Assessment Summary 2021	1
Introduction	2
Description of the Hospital and Community	2
Description of Community Health Needs Assessment Update Process	4
Results of Survey	6
Survey Respondent Demographics	7
Results of Secondary Data Analysis	10
Priority Health Issues	15
Conclusion	15

Attachment A	Secondary Data
Attachment B	Summary-Secondary Data
Attachment C	Community Health Assessment Survey Instrument
Attachment D	Community Health Assessment Survey Results

## West Tennessee Healthcare Community Health Needs Assessment Summary 2021

Needs assessments were completed in fulfillment of requirements of the Patient Protection and Affordable Care Act Pub.L.No.111-148, 124 Stat. 119, enacted March 23, 2010; and Department of Treasury Internal Revenue Service 26 CFR Parts 1, 53, and 62 *Additional Requirements for Charitable Hospitals; Community Health Needs Assessments for Charitable Hospitals; Requirement of a Section 4959 Excise Tax Return and Time for filing the Return.*

Assessments were conducted for Madison, Benton, Chester, Crockett, Dyer, Gibson, Haywood, Hardeman, Weakley, and for Pathways as a mental health hospital. This document reflects work for Benton County Community Health Needs Assessment.

The 2021 needs assessments were update of those conducted in 2012, 2015, and 2018. Because of high volumes of COVID-19, this is a limited needs assessment conducted by a committee of West Tennessee Healthcare staff. Tennessee Department of Health Community Health Councils are not meeting on a regular basis due to COVID-19 so input from community representatives was not available. Jackson-Madison County General Hospital and other community agencies are conducting very little community outreach efforts. WTH staff will reconvene the Needs Assessment Committee in 2022, and upon consultation with the Health Council, will update outreach strategies.

The first stage of the Update process involved gathering secondary data from multiple sources for each county. The second step in the Community Health Needs Assessment Update process consisted of creating a survey to collect data from residents on local health issues. The survey consisted of 49 questions that asked basic demographics of age, race, education level, insurance, county of residence, presence or absence of specific health issues, access to care, physical activity, health information, and ten questions on adverse childhood experiences prior to 18<sup>th</sup> birthday. Respondents were requested to answer a simple “yes” or “no” to specific health issues and adverse childhood experiences.

The survey instrument was distributed by hand during community wide COVID-19 vaccination clinics at Lane College and Humboldt Medical Center on March 20, 2021; and Jackson-Madison County General Hospital on March 30, 2021. Data from 1,895 completed surveys was collected.

Sixteen WTH staff and two members from Quality Council were asked to serve on an Internal Committee to review secondary and survey data. Surveys were distributed at several locations, and data were requested on basic respondent demographics. The age group 51 to 64 represented 43 percent of respondents, followed by age 36 to 50 (22 percent), and age 65 and older (18 percent). The predominant education level is respondents with a Bachelors degree (28 percent), followed by high school graduate/ GED (22 percent) and some college (21 percent). Sixty percent (60 percent) of respondents were working full time and 20 percent were retired. A majority of individuals completing the survey were women (56 percent), had private health insurance (59 percent, and were Caucasian (68 percent)

Upon a review of survey responses and secondary data, four priority health issues were identified.

COVID-19

Chronic Health Conditions

Obesity

Mental Health and Substance Abuse Issues

Pathways Issues

Depression

Domestic Violence/Anger Management

Co-Occurring Mental Health & Substance Abuse

Alcohol, Drug, and Prescription Drug Abuse (emphasis on Opioid Crisis)

Suicide

## **Introduction**

Under the leadership of West Tennessee Healthcare Camden Hospital, a community health needs assessment was conducted in 2021. The needs assessment was completed in fulfillment of requirements of the Patient Protection and Affordable Care Act Pub.L.No.111-148, 124 Stat. 119, enacted March 23, 2010; and Department of Treasury Internal Revenue Service 26 CFR Parts 1, 53, and 62 *Additional Requirements for Charitable Hospitals; Community Health Needs Assessments for Charitable Hospitals; Requirement of a Section 4959 Excise Tax Return and Time for filing the Return.*

This 2021 needs assessment is an update of those conducted in 2012, 2015, and 2018. Because of high volumes of COVID-19, this is a limited needs assessment conducted by a committee of West Tennessee Healthcare staff (including Camden Hospital). Tennessee Department of Health Community Health Councils are not meeting on a regular basis due to COVID-19 so input from community representatives was not available. Jackson-Madison County General Hospital, West Tennessee Healthcare Camden Hospital and other community agencies are conducting very little community outreach efforts. The Hospital will reconvene the Needs Assessment Committee in 2022, and upon consultation with the Health Council, will update outreach strategies. The process used to conduct this limited assessment is described in the following pages.

## **Description of the Hospital and Community**

West Tennessee Healthcare Camden Hospital is a critical access hospital, licensed for 25 inpatient beds (including 10 swing beds) and was acquired by the Jackson-Madison County General Hospital District in 1997. The Hospital is a member of the American Hospital Association, Tennessee Hospital Association, is accredited by The Joint Commission, and is approved by the U.S. Department of Health and Human Services for participation in Medicare and Medicaid programs. Their service area is Benton County, Tennessee.

Located in Camden, Tennessee, the Hospital provides inpatient, outpatient and emergency services, sleep center, pathology and laboratory department, radiology (magnetic resonance imaging, computerized axial tomography, mammography, ultrasound, and diagnostic X-RAY), and social services.

The designated “community” for the needs assessment is Benton County, Tennessee. With a 2020 Decennial Census population of 15,864, Benton County is located in rural Northwest Tennessee approximately 92 miles West of Nashville. The population is 2.4 percent Hispanic and 97.6 percent Other. According to the Tennessee Department of Economic & Community Development, 19.5 percent of persons living in households are below the Federal poverty level. The personal income per capita is \$34,482. The population 18 to 64 represents 56.7 percent, while the age 65 and older population is 23.8 percent of the total. The high school graduation rate is 99.0 percent; 19.5 percent have an Associate Degree of higher and 13.2 percent have a Bachelor Degree or higher.

Benton County is composed of two small towns: Big Sandy (pop. 663), and Camden (pop. 3,582).

Benton County has a wide range of industries that employ individuals living in and around the county. Advanced manufacturing and health care are the county’s key industries followed by transportation, distribution and logistics, business services, chemicals, plastics, and rubber.

Benton County is home to manufacturers and businesses such as Wal-Mart Stores, Inc. (230 employees), Jones Plastic and Engineering Corporation (222 employees), Carhartt, Inc. (143 employees), West Tennessee Healthcare Camden Hospital (80 employees), North Forty Truckstop, Inc (75 employees), and Carey Counseling Center (59 employees).

Other top employers are Benton County Board of Education with 350 employees, Camden Elementary School (70 employees), Benton County Government with 115 employees, and Town of Camden, 59 employees. .

The county seat of Benton County is Camden, Tennessee. The Benton County Schools has 2,105 students.

### **Description of Community Health Needs Assessment Update Process**

The mission of the Community Health Needs Assessment is to evaluate and improve the health status and wellbeing of residents in Benton County, Tennessee with an emphasis on preventive measures. The community health needs assessment was a review of survey results and secondary data identifying state and regional health data.

The Community Health Needs Assessment had ten (10) organizational goals.

1. To form alliances between West Tennessee Healthcare Camden Hospital, non-profit organizations, and the community at large to assess, improve, and promote the community health of Benton County, Tennessee.
2. To identify internal resources already available to assist in improving community health.
3. To assist in identifying available community resources.
4. To define “health” as it pertains to Benton County, Tennessee.
5. To identify collaborative partners.
6. To educate and gain formal support of West Tennessee Healthcare leadership team, Board of Trustees, community leaders, and others.
7. To assist in establishing baseline health status assessment of Benton County by collecting and reviewing available secondary data and statistics from resident surveys.
8. To assist in determining standards against which to measure current and future health status of the community.
9. To assist in communitywide establishment of health priorities and in facilitating collaborative planning, actions, and direction to improve community health status and quality of life.
10. To promote the need for ongoing evaluation of the community health assessment process to learn results, establish new goals and encourage further community action and involvement.

The first stage of the Update process involved gathering secondary data from multiple sources including the Tennessee Department of Health, County Health Rankings and Roadmaps, Tennessee Department of Economic & Community Development, Tennessee Department of Mental Health and Substance Abuse Services, Tennessee Bureau of Investigation, Centers of Disease Control and Prevention, Tennessee Behavioral Health County and Region Services Data Book, Tennessee Department of Health. Behavioral Risk Factor Surveillance System, and Traumatic Brain Injury Program. These data are presented in **Attachment A**.

The second step in the Community Health Needs Assessment Update process consisted of creating a survey to collect data from residents on local health issues. The survey consisted of 49 questions that asked basic demographics of age, race, education level, insurance, county of residence, presence or absence of specific health issues, access to care, physical activity, health information, and ten questions on adverse childhood experiences prior to 18<sup>th</sup> birthday.

Respondents were requested to answer a simple “yes” or “no” to specific health issues and adverse childhood experiences. **Attachment B** has a summary of secondary data.

The survey instrument was distributed by hand during community wide COVID-19 vaccination clinics at Lane College and Humboldt Medical Center on March 20, 2021; and Jackson-Madison County General Hospital on March 30, 2021. Data from 1,895 completed surveys was collected. **Attachment C** contains a copy of the survey instrument, and **Attachment D** has a copy of the survey results.

An internal committee of West Tennessee Healthcare staff were identified to participate in the update process.

Vicki Lake	Department of Community Development
Rose Bailey	Department of Diversity, Health Equity, and Operational Excellence
Ruby Kirby	WTH Bolivar Hospital and WTH Camden Hospital
Joyce Noles	Emergency Services
Deena Kail	West Tennessee Women’s Center, Ayers Children’s Medical Center
Gina Myracle	Alice and Carl Kirkland Cancer Center
Melissa Walls	Virtual Care
Frank McMeen	West Tennessee Healthcare Foundation
Anna Tetleton Burns	Primary Care Clinics
Miki Martin	LIFT

LeAnn Childress	LIFT Therapy
Pam Henson	Pathways Behavioral Health Services
Betty Haskins	WTH Camden Hospital
Scott Barber	WTH Dyersburg Hospital
Sherry Scruggs	WTH Milan Hospital
Kevin Decker	WTH Volunteer Hospital
Tina Prescott	Administration
Vanessa Patrick	Administration

### Results of Survey (N=1,895)

Health prevalence was identified by the percentage of respondents indicating they had experienced a specific medical issue. Figure 1 contains the ranking according to prevalence among respondents.

Figure 1: Health Issue Prevalence

Allergies	46%	Lack of financial resources: dental care	15%
High Blood Pressure	42%	Lack of financial resources: medical care	10%
Arthritis	33%	Lack of financial resources: medications	10%
Stress	31%	Lack of transportation: medications:	5%
Chronic Pain	18%	Lack of transportation: dental care	4%
Diabetes	18%	Lack of transportation: medical care	4%
Eye Conditions	14%		
Asthma	12%	No access to adult or child care	32%
Hearing Loss	11%	No access to physical activity facilities	16%
Heart Conditions	11%	No access to healthy foods	14%
Bullying	10%		
Autoimmune Disease	8%	Family history of heart failure	81%
Fall Injuries	8%	Family history of suicide	10%
Osteoporosis	5%	Family history of opioid use	9%
COPD	4%		
Stroke	3%	COVID-19 Vaccination Experienced	91%
Dementia/Alzheimers	1%	COVID-19	46%

### Survey Respondent Demographics

Surveys were distributed at several locations, and data were requested on basic respondent demographics. The age group 51 to 64 represented 43 percent of respondents, followed by age 36 to 50 (22 percent), and age 65 and older (18 percent) (Figure 2). The predominant education level is respondents with a Bachelors degree (28 percent), followed by high school graduate/GED (22 percent) and some college (21 percent) (Figure 3). Sixty percent (60 percent) of respondents were working full time and 20 percent were retired (Figure 4). A majority of individuals completing the survey were women (56 percent) (Figure 5), had private health insurance (59 percent) (Figure 6), and were Caucasian (68 percent) (Figure 7).

Figure 2: Age Distribution

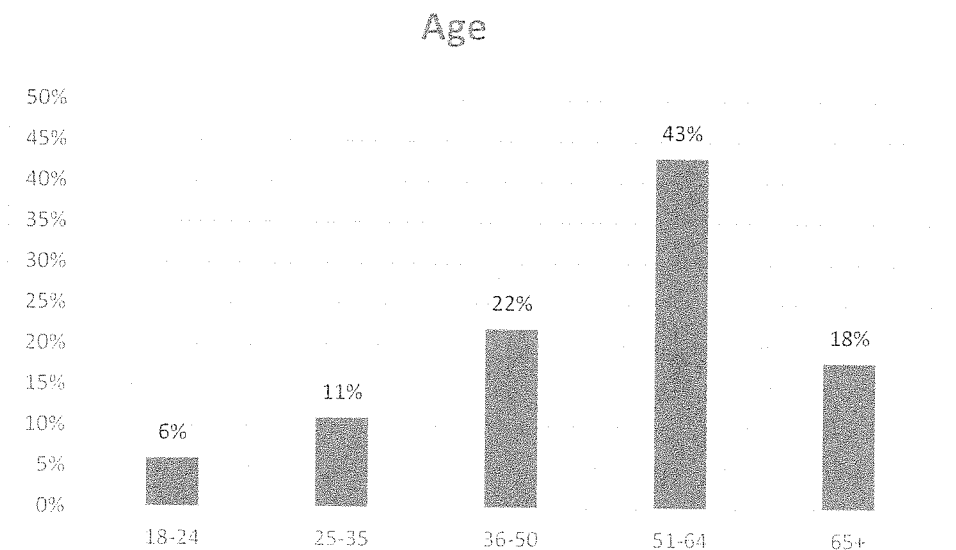




Figure 3: Education Levels

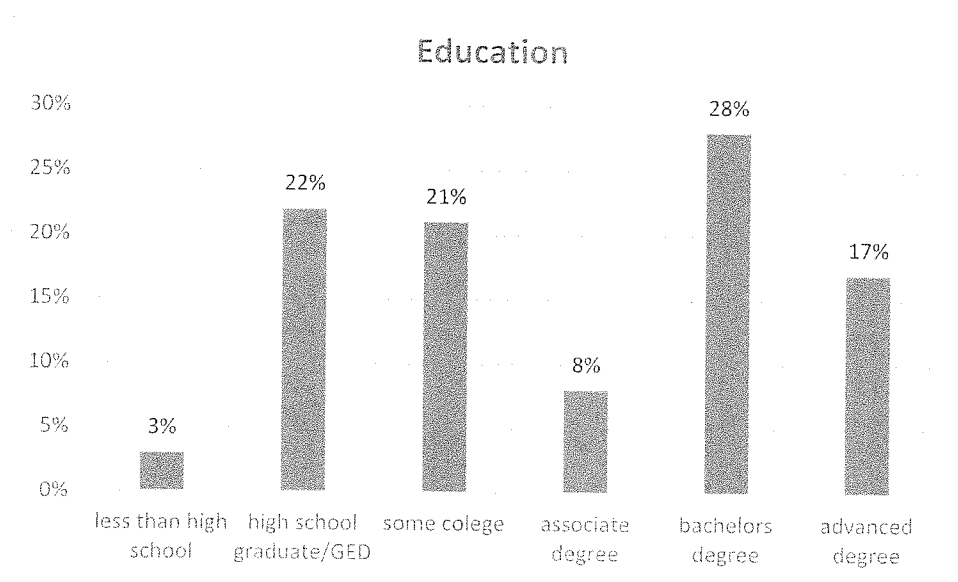


Figure 4: Employment Status

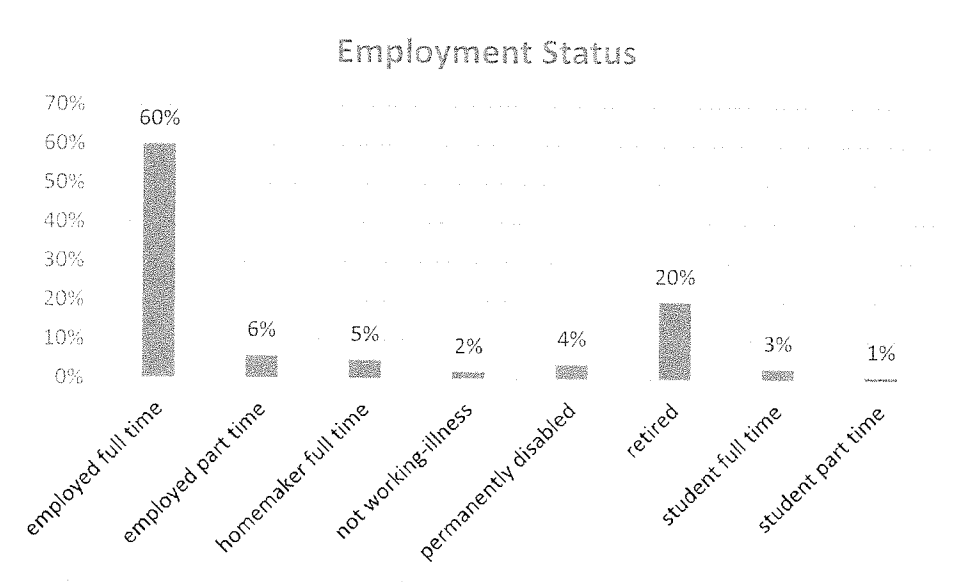


Figure 5: Gender

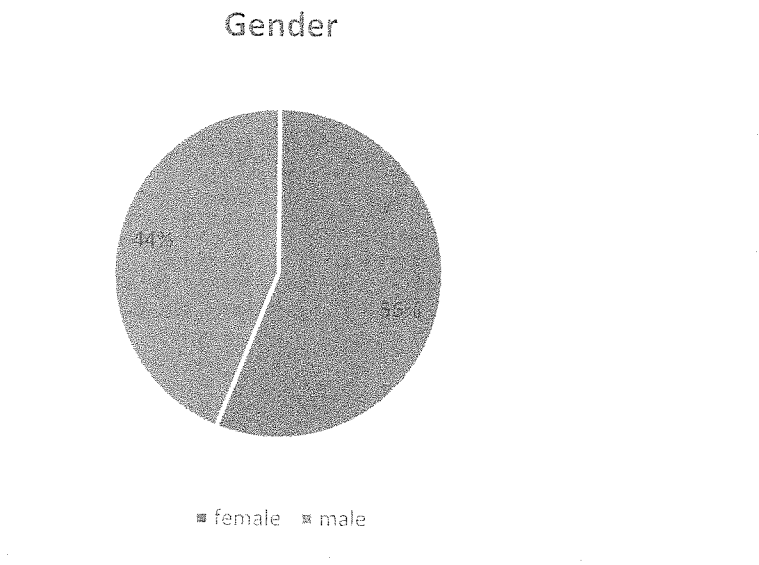


Figure 6: Insurance Coverage

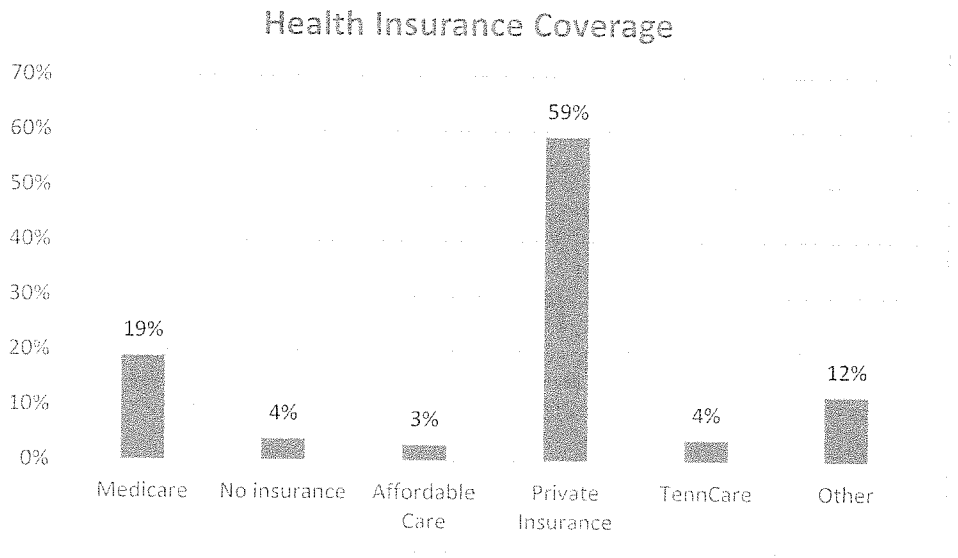
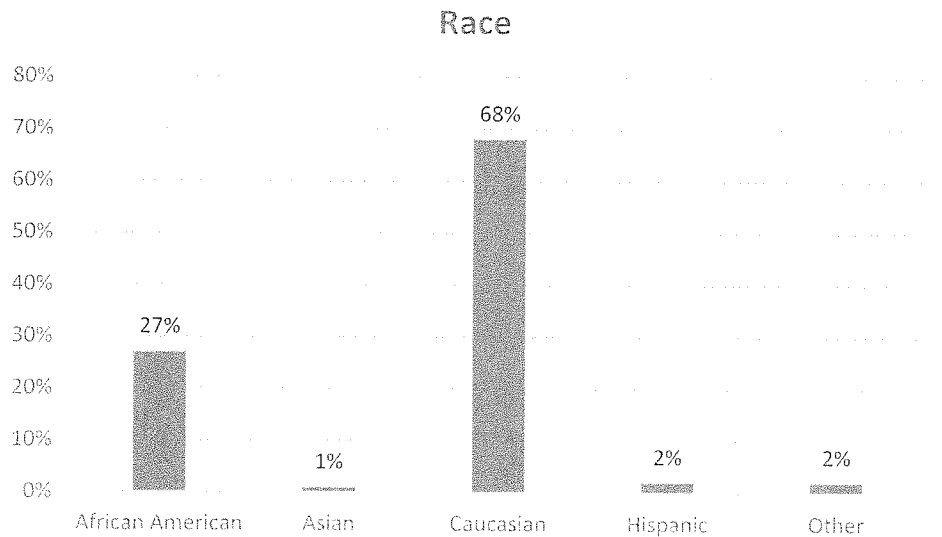


Figure 7: Race



### Results of Secondary Data Analysis

The West Tennessee Healthcare Committee reviewed secondary data, focusing on indicators where the county consistently had higher rates, percentages, volumes than the state as a whole. For Benton County, deaths from cancer, deaths from heart disease, children in poverty, uninsured population, obesity, tobacco use, deaths from cerebrovascular disease, deaths from diabetes, and teen pregnancy were consistently higher than the State of Tennessee as a whole.

Table 1: Deaths from Diseases of the Cancer Per 100,000

Deaths from Malignant Neoplasms Per 100,000							
	Total	Benton White	Black		Total	TN White	Black
2018	438.7	449.9	*		208.8	226.9	170.7
2017	281.4	290.0	*		212.8	230.6	173.1
2016	462.0	480.6	*		217.5	235.1	178.0

2015	353.3	359.1	*	214.8	229.5	170.4
2014	421.3	437.5	*	216.1	231.8	182.4
2013	337.7	354.9	0.0	214.5	231.0	176.4
2012	311.5	327.3	0.0	211.2	226.5	176.3
2011	395.6	400.9	0.0	210.2	224.6	180.1
2010	369.9	387.6	0.0	212.9	234.6	178.9
2009	356.0	354.8	0.0	216.2	226.9	183.5

Source: Tennessee Department of Health.

Table 2: Death from Diseases from the Heart per 100,000

<b>Heart Conditions</b>						
<b>Death from Diseases of the Heart Per 100,000</b>						
Rate						
	Total	Benton White	Black	Total	TN White	Black
2018	<b>376.9</b>	<b>391.2</b>	*	<b>242.5</b>	<b>263.2</b>	<b>199.7</b>
2017	<b>519.0</b>	<b>527.2</b>	*	<b>238.4</b>	<b>259.5</b>	<b>193.8</b>
2016	387.0	401.6	*	232.1	249.9	196.8
2015	353.3	346.1	*	237.5	252.8	190.1
2014	365.5	385.3	-	232.0	250.8	189.3
2013	460.5	477.5	0.0	226.7	245.1	183.1
2012	476.4	500.6	0.0	220.6	241.2	165.2
2011	486.9	483.6	0.0	221.0	239.7	175.3
2010	351.7	362.2	0.0	228.3	254.0	181.8
2009	500.8	241.1	0.0	228.0	241.1	185.8

Source: Tennessee Department of Health.

Table 3: Children in Poverty

<b>Children in Poverty-Percent of children under 18 in poverty</b>		
	Benton County	TN
2020	30	22
2019	30	21
2018	30	23
2017	32	24
2016	33	26

2015	36	27
2014	36	26
2013	35	27
2012	34	26
2011	29	22
2010	25	23

Table 4: Uninsured Population

Uninsured Adults-Percent Population Under Age 65 without health insurance			
	Benton		TN
2020		15	14
2019		14	13
2018		14	12
2017		16	14
2016		18	16
2015		19	16
2014		23	21
2013		18	21
2012		19	20
2011		17	19
2010		14	15

Table 5: Tobacco Use

Tobacco Use			
Adult Smoking-Percent of Adults that report smoking at least 100 cigarettes			
	Benton		TN
2020	24		23
2019	23		22
2018	23		22
2017	24		22
2016	24		24
2015	25		23
2014	25		23
2013	28		23
2012	30		24

2011	no data	24
2010	no data	25

Source: Robert Wood Johnson Foundation and University of Wisconsin  
Population Health Institute.

Table 6: Deaths from Cerebrovascular Disease

Deaths from Cerebrovascular Disease per 100,000 RATE							
	Total	Benton White	Black		Total	TN White	Black
2018	61.8	65.2	*		51.7	54.5	49.9
2017	81.3	85.7	*		52.4	55.2	50.1
2016	81.2	85.6	-		52.8	55.1	52.6
2015	62.0	65.3	-		52.2	53.9	49.8
2014	74.3	78.4	-		50.7	53.1	48.4
2013	49.1	51.6	0.0		48.1	50.5	45.8
2012	36.6	32.1	0.0		46.3	48.6	42.9
2011	91.3	95.4	0.0		50.1	52.8	46.2
2010	78.8	82.6	0.0		50.1	54.3	45.6
2009	90.5	93.4	0.0		50.6	51.9	48.2

Source: Tennessee Department of Health.

Table 7: Obesity

Obesity Adults who have a body mass index greater than 30-overweight or obese (percent)		
	Benton	TN
2020	35.0	33.0
2019	35.0	32.0
2018	34.0	32.0
2017	32.0	32.0
2016	34.0	32.0
2015	33.0	32.0
2014	34.0	32.0
2013	33.0	32.0
2012	33.0	32.0
2011	31.0	31.0

Source: County Health Rankings

Table 8: Deaths from Diabetes

Deaths from Diabetes per 100,000							
	Total	Benton			TN		
		White	Black		Total	White	Black
2018	68.0	71.7	*		29.9	29.4	38.0
2017	62.5	65.9	*		28.5	28.1	36.1
2016	12.5	13.2	-		28.4	27.5	37.3
2015	55.8	52.2	*		27.1	26.6	32.8
2014	12.4	13.1	*		26.3	25.8	33.5
2013	30.7	32.3	0.0		27.9	27.1	36.8
2012	18.3	19.3	0.0		28.2	27.4	36.7
2011	42.6	44.5	0.0		27.1	26.3	35.7
2010	60.6	63.5	0.0		26.4	26.4	35.0
2009	36.2	31.1	0.0		28.2	26.8	37.7

Source: Tennessee Department of Health.

Table 9: Teenage Pregnancy

Teenage Pregnancy							
Pregnancies Age 10-17 per 1,000 Females							
	Total	Benton			TN		
		White	Black		Total	White	Black
2018	5.5	6.0	*		4.6	3.7	8.8
2017	7.3	*	*		4.9	4.1	8.7
2016	5.7	6.1	*		5.4	4.5	9.7
2015	7.1	7.6	*		6.0	5.1	10.2
2014	10.9	11.6	*		7.2	6.0	12.9
2013	10.9	11.6			7.2	6.0	12.9
2012	12.0	11.5	0.0		8.3	7.0	14.0
2011	15.4	15.1	0.0		8.9	7.3	15.5
2010	9.5	7.7	0.0		10.0	8.3	17.9
2009	19.8	20.9	0.0		12.0	9.1	21.9

Pregnancies Age 15-17 Per 1,000 Females

	Benton			TN		
	Total	White	Black	Total	White	Black
2018	15.2	16.6	*	11.6	9.5	21.6
2017	19.4	*	*	12.4	10.5	21.4
2016	15.9	17.4	*	13.7	11.5	23.6
2015	18.9	20.3	*	15.2	13.2	24.7
2014	28.8	30.7	*	18.2	15.6	30.8
2013	28.8	30.7		7.2	6.0	12.9
2012	25.5	23.5	0.0	21.2	18.1	33.9
2011	38.7	37.9	0.0	22.4	18.9	36.5
2010	23.3	18.9	0.0	24.8	21.1	42.1
2009	45.5	48.0	0.0	29.6	22.4	55.5

Source: Tennessee Department of Health.

In addition to these issues COVID-19 data for Benton County was reviewed as of August 23, 2021. Benton County has experienced 1,985 positive cases. Of this figure, 49 have been hospitalized, 41 individuals have died, and 1,781 have recovered.

### Priority Health Issues

Upon a review of survey responses and secondary data, four priority health issues were identified.

COVID-19

Chronic Health Conditions

Obesity

Mental Health and Substance Abuse Issues

### Conclusion

The Benton County Community Health Needs Assessment was presented to the West Tennessee Healthcare Quality Council on Tuesday September 21, 2021. The document was approved for submission to the West Tennessee Healthcare Board of Trustees and approved on October 26, 2021.



The Hospital Committee will reconvene in 2022 to collaborate with the Tennessee Department of Health County Health Council and will update this report with identified strategies.

This report is submitted as required in the Patient Protection and Affordable Care Act Pub.L.NO.111-148, 124 Stat. 119, enacted March 23, 2010, requiring updating every three years.

**Benton County Community Health Assessment  
Update of Size of Health issues 2021-Update 2-2021  
Prioritization of Health Issues**

Population	16,160
Age 65 +	23.90%
Caucasian	94.60%
African American	2.60%
Latino	2.70%
High School Graduates	80.90%
B.S. Degree or Higher	12.60%
Disability< Age 65	20.10%
Median HH Income	\$33,125
PerCapita Income	\$21,374

**Number Receiving Behavioral Safety Net Services**

2015	2016	2017	2018	2019	2020
115	111	123	136	115	

**Face to Face Crisis Service Assessments**

271	300	374	824	874
-----	-----	-----	-----	-----

Source: Tennessee Department of Mental Health & Substance Abuse Services

**Frequent mental distress 2014-2016-15 percent**

**Alcohol & Substance Use**

**Binge/Excessive Drinking-Percent who report in the past 30 days**

	Benton	TN
2020	12	14
2019	12	14

2018	12	14
2017	11	11
2016	11	12
2015	not available	9
2014	8	9
2013	8	10
2012	9	9
2011	11	9
2010	11	9

Source: Robert Wood Johnson Foundation and University of Wisconsin Population Health Institute.

**Neonatal Abstinence Syndrome-number reported per 1,000 live births**

	Benton Co	TN
2018		11.4
2017	18.4	
2016	5.7	
2015	5.8	
2014	21.3	

Source: NAS Surveillance Data

**Rate of Opioid Prescriptions-Number Per 1,000 persons**

	Benton Co	TN	US
2018	1552.1	901.1	587.0
2017	1867.5		
2016	2074.5		
2015	2206.0		
2014	2306.6		

Source: Informatics & Analytics Centers for Disease Control & Prevention.

**Number of drug related arrests for adults over 18 in Benton County**

2019	49
2018	64
2017	55
2016	94
2015	76
2014	65

Source: Tennessee Bureau of Investigation

Source: Tennessee Department of Mental Health and Substance Abuse Services. Tennessee Behavioral Health County Data Book 2014

## Allergies

1 in 5 Americans suffer from all types of allergies

Allergies have increased in prevalence since the 1980s across age, sex, racial groups.

19.2 million diagnosed with hay fever

Annual costs from allergies \$18 billion

Annual costs from food allergies \$25 billion

About 200,000 emergency room visits each year from food allergies

Approximately 50 million people experience allergies.

Allergies are the 6th leading chronic disease among all ages.

Source: Asthma and Allergy Foundation of America; Centers for Disease Control and Prevention

## Cancer

### Deaths from Malignant Neoplasms Per 100,000

	Benton				TN		
	Total	White	Black		Total	White	Black
2018	438.7	449.9	*		208.8	226.9	170.7
2017	281.4	290.0	*		212.8	230.6	173.1
2016	462.0	480.6	*		217.5	235.1	178.0
2015	353.3	359.1	*		214.8	229.5	170.4
2014	421.3	437.5	*		216.1	231.8	182.4
2013	337.7	354.9	0.0		214.5	231.0	176.4
2012	311.5	327.3	0.0		211.2	226.5	176.3
2011	395.6	400.9	0.0		210.2	224.6	180.1
2010	369.9	387.6	0.0		212.9	234.6	178.9
2009	356.0	354.8	0.0		216.2	226.9	183.5

Source: Tennessee Department of Health.

## COPD, Emphysema, or Chronic Bronchitis

About 9.7 percent of Tennessee population have COPD.

Respondents were more likely to report COPD ( $p < 0.05$ ) if they

- Were female.
- Were unable to work.
- Had not graduated from high school.
- Had a household income of \$25,000 or less.
- Had a history of smoking (current or former).
- Had a history of asthma.

Respondents were less likely to report COPD ( $p < 0.05$ ) if they

- Were aged 44 years or younger.
- Were male.
- Had never smoked.
- Had no history of asthma.

Source: COPD Foundation; Centers for Disease Prevention and Control

## Diabetes

### Deaths from Diabetes per 100,000

	Benton			TN		
	Total	White	Black	Total	White	Black
2018	68.0	71.7	*	29.9	29.4	38.0
2017	62.5	65.9	*	28.5	28.1	36.1
2016	12.5	13.2	-	28.4	27.5	37.3
2015	55.8	52.2	*	27.1	26.6	32.8
2014	12.4	13.1	*	26.3	25.8	33.5
2013	30.7	32.3	0.0	27.9	27.1	36.8
2012	18.3	19.3	0.0	28.2	27.4	36.7
2011	42.6	44.5	0.0	27.1	26.3	35.7
2010	60.6	63.5	0.0	26.4	26.4	35.0
2009	36.2	31.1	0.0	28.2	26.8	37.7

Source: Tennessee Department of Health.

### Percentage of Population Diagnosed with Diabetes

	Benton	TN
2020	14	13
2019	14	13
2018	15	13
2017	14	13
2016	14	12
2015	15	12
2014	14	11

2013	14	11
2012	14	11
2011	14	11

Source: Robert Wood Johnson Foundation and University of Wisconsin

### Dental Care

Tennessee ranks 38th for dental care. Oral cancer from tobacco use accounts for 75 to 90 percent of oral cancer. About 22 percent of adults and 10 percent of children smoke in Tennessee.

People do not visit a dentist because of cost (70%) and fear (25%).

Benton County is Federal Health Professional Shortage Area for Dental Care  
ID 6474694854 Low Income Population; Single County Score = 19 Rural

### Financial Resources

#### Children in Poverty-Percent of children under 18 in poverty

	Benton County	TN
2020	30	22
2019	30	21
2018	30	23
2017	32	24
2016	33	26
2015	36	27
2014	36	26
2013	35	27
2012	34	26
2011	29	22
2010	25	23

#### Uninsured Adults-Percent Population Under Age 65 without health insurance

	Benton	TN
2020	15	14
2019	14	13
2018	14	12
2017	16	14

2016	18	16
2015	19	16
2014	23	21
2013	18	21
2012	19	20
2011	17	19
2010	14	15

#### Percent Children Living in Single-Parent households

	Benton	TN
2020	35	35
2019	36	35
2018	32	36
2017	33	36
2016	34	36
2015	31	36
2014	28	35
2013	28	35
2012	31	35
2011	29	34

Source: Robert Wood Johnson Foundation and University of Wisconsin Population Health Institute.

#### All People in Poverty-Percent

	Benton	TN
2019	19.2	10.5

Source: 2017 Tennessee Behavioral Health County and Region Services Data Book

Source: County and City Quick Facts.

#### Unemployment

	Benton	TN	US
2020	5.8	5.3	6.7
2019	3.9	3.3	3.5
2017	5.2	3.6	4.4
2016	6.6	4.0	4.9
2015	7.7	5.6	5.0
2014	9.0	5.6	6.6

Source: Tennessee Department of Labor & Workforce Development

#### Heart Conditions

**Death from Diseases of the Heart Per 100,000**

Rate

	Benton			TN		
	Total	White	Black	Total	White	Black
2018	376.9	391.2	*	242.5	263.2	199.7
2017	519.0	527.2	*	238.4	259.5	193.8
2016	387.0	401.6	*	232.1	249.9	196.8
2015	353.3	346.1	*	237.5	252.8	190.1
2014	365.5	385.3	-	232.0	250.8	189.3
2013	460.5	477.5	0.0	226.7	245.1	183.1
2012	476.4	500.6	0.0	220.6	241.2	165.2
2011	486.9	483.6	0.0	221.0	239.7	175.3
2010	351.7	362.2	0.0	228.3	254.0	181.8
2009	500.8	241.1	0.0	228.0	241.1	185.8

Source: Tennessee Department of Health.

**High Blood Pressure****Deaths from Cerebrovascular Disease per 100,000**

RATE

	Benton			TN		
	Total	White	Black	Total	White	Black
2018	61.8	65.2	*	51.7	54.5	49.9
2017	81.3	85.7	*	52.4	55.2	50.1
2016	81.2	85.6	-	52.8	55.1	52.6
2015	62.0	65.3	-	52.2	53.9	49.8
2014	74.3	78.4	-	50.7	53.1	48.4
2013	49.1	51.6	0.0	48.1	50.5	45.8
2012	36.6	32.1	0.0	46.3	48.6	42.9
2011	91.3	95.4	0.0	50.1	52.8	46.2
2010	78.8	82.6	0.0	50.1	54.3	45.6
2009	90.5	93.4	0.0	50.6	51.9	48.2

Source: Tennessee Department of Health.

**Influenza in rural West Tennessee****Vaccine Rate-Medicare Fee for Service Beneficiaries**

	Benton Co	TN	US
2018	47.0%	47.37%	45.99%
2017	47.0%		
2016	54.1%		
2015	52.3%		



2014	54.9%
------	-------

Source: US Department of Health & Human Services

### Obesity

Adults who have a body mass index greater than 30-overweight or obese (percent)

	Benton	TN
2020	35.0	33.0
2019	35.0	32.0
2018	34.0	32.0
2017	32.0	32.0
2016	34.0	32.0
2015	33.0	32.0
2014	34.0	32.0
2013	33.0	32.0
2012	33.0	32.0
2011	31.0	31.0

Source: County Health Rankings

### Youth Obesity

	Benton Co	TN
2017	50.2%	
2016	43.3%	39.2%
2015	47.6%	
2014	44.5%	

Source: Coordinated School Health.

### Physical Activity

	Benton Co	TN	US
2018			75.4%
2017		69.4%	
2016	70.9%		
2015	68.4%		
2014	65.0%		

Source: Behavioral Risk Survey. Percentage of adults reporting physical activity-past 30 days

## Teenage Pregnancy

### Pregnancies Age 10-17 per 1,000 Females

	Benton				TN		
	Total	White	Black		Total	White	Black
2018	5.5	6.0	*		4.6	3.7	8.8
2017	7.3	*	*		4.9	4.1	8.7
2016	5.7	6.1	*		5.4	4.5	9.7
2015	7.1	7.6	*		6.0	5.1	10.2
2014	10.9	11.6	*		7.2	6.0	12.9
2013	10.9	11.6			7.2	6.0	12.9
2012	12.0	11.5	0.0		8.3	7.0	14.0
2011	15.4	15.1	0.0		8.9	7.3	15.5
2010	9.5	7.7	0.0		10.0	8.3	17.9
2009	19.8	20.9	0.0		12.0	9.1	21.9

### Pregnancies Age 15-17 Per 1,000 Females

	Benton				TN		
	Total	White	Black		Total	White	Black
2018	15.2	16.6	*		11.6	9.5	21.6
2017	19.4	*	*		12.4	10.5	21.4
2016	15.9	17.4	*		13.7	11.5	23.6
2015	18.9	20.3	*		15.2	13.2	24.7
2014	28.8	30.7	*		18.2	15.6	30.8
2013	28.8	30.7			7.2	6.0	12.9
2012	25.5	23.5	0.0		21.2	18.1	33.9
2011	38.7	37.9	0.0		22.4	18.9	36.5
2010	23.3	18.9	0.0		24.8	21.1	42.1
2009	45.5	48.0	0.0		29.6	22.4	55.5

Source: Tennessee Department of Health.

## Tobacco Use

### Adult Smoking-Percent of Adults that report smoking at least 100 cigarettes

	Benton	TN
2020	24	23
2019	23	22
2018	23	22
2017	24	22

2016	24	24
2015	25	23
2014	25	23
2013	28	23
2012	30	24
2011	no data	24
2010	no data	25

**Source: Robert Wood Johnson Foundation and University of Wisconsin  
Population Health Institute.**

Summary of Health Issues-2021 Community Health Needs Assessment Secondary Data

X= indicator Higher for the County than the State of Tennessee

County	Cancer Deaths	Heart Disease	Children in Poverty	Uninsured Population	Persons in Poverty	Obesity	Teen Pregnancy	Tobacco Use	Cerebrovascular Deaths	Diabetes Deaths	Excessive Drinking	Teen Pregnancy	Drug-Related Issues	Diabetes Diagnosed	Motor Vehicle Accidents
Benton	X	X	X	X		X		X	X	X		X			
Chester		X			X	X				X			X	X	
Crockett	X	X		X	X	X		X		X	X	X	X		
Gibson	X	X				X				X					X
Hardeman	X	X	X	X		X		X	X	X			X	X	
Haywood	X	X	X			X			X	X			X	X	
Madison		X	X			X			X	X			X	X	
Dyer	X	X				X				X		X	X	X	
Weakley	X					X				X			X		



# Community Health Assessment Survey

## West Tennessee Healthcare



We would like you to help us identify current health and well being issues facing rural West Tennessee counties. Your responses will be confidential. This survey will take between 3-5 minutes.

Please answer the following questions by selecting the response that best describes you. Darken or fill in the circle for each response.

1. Age

- ☐ 18-24      ☐ 25-35      ☐ 36-50      ☐ 51-64      ☐ 65+

2. Education

- ☐ Less than high school      ☐ High school graduate/GED      ☐ Some college  
☐ Associate degree      ☐ Bachelor degree      ☐ Advanced degree

3. Employment Status

- ☐ Employed full time      ☐ Employed part time  
☐ Homemaker full time      ☐ Not working because of acute illness or injury  
☐ Permanently disabled      ☐ Retired  
☐ Student full time      ☐ Student part time

4. Gender

- ☐ Female  
☐ Male  
☐ Trans Female (Male to Female)  
☐ Trans Male (Female to Male)  
☐ Gender Non-conforming (i.e. not exclusively male or female)

5. Insurance

- ☐ Medicare      ☐ No insurance  
☐ Obamacare (Affordable Healthcare)      ☐ Private insurance  
☐ TennCare      ☐ Other

6. County of Residence

- |                                  |                                |                                 |                               |                              |
|----------------------------------|--------------------------------|---------------------------------|-------------------------------|------------------------------|
| <input type="radio"/> Benton     | <input type="radio"/> Chester  | <input type="radio"/> Crockett  | <input type="radio"/> Dyer    | <input type="radio"/> Gibson |
| <input type="radio"/> Hardeman   | <input type="radio"/> Haywood  | <input type="radio"/> Madison   | <input type="radio"/> Weakley | <input type="radio"/> Benton |
| <input type="radio"/> Carroll    | <input type="radio"/> Chester  | <input type="radio"/> Crockett  | <input type="radio"/> Decatur | <input type="radio"/> Dyer   |
| <input type="radio"/> Gibson     | <input type="radio"/> Hardeman | <input type="radio"/> Hardin    | <input type="radio"/> Haywood | <input type="radio"/> Henry  |
| <input type="radio"/> Lauderdale | <input type="radio"/> Madison  | <input type="radio"/> McNairy   | <input type="radio"/> Obion   | <input type="radio"/> Shelby |
| <input type="radio"/> Weakley    | <input type="radio"/> Lake     | <input type="radio"/> Henderson |                               |                              |





# Community Health Assessment Survey

## West Tennessee Healthcare



### 7. Race

- |  |   |
|--|---|
| <input type="radio"/> African/American | <input type="radio"/> American Indian/Alaskan Native            |
| <input type="radio"/> Asian            | <input type="radio"/> Caucasian                                 |
| <input type="radio"/> Hispanic/Latino  | <input type="radio"/> Indian (from India or parents from India) |
| <input type="radio"/> Middle Eastern   | <input type="radio"/> Pacific Islander/Polynesian               |
| <input type="radio"/> Other            | <input type="radio"/> Not sure                                  |

### 8. Weight

- ☐ Just right      ☐ Obese      ☐ Overweight      ☐ Underweight

**For the following questions, indicate if you have experienced the health issue by selecting Yes or No.**

Response Definition: Y=Yes N=No

- |  | Y                     | N                     |
|--|-----------------------|-----------------------|
| 9. Have you had (or do you currently have) <b>Allergies?</b>   | <input type="radio"/> | <input type="radio"/> |
| 10. Have you had (or do you currently have) <b>Arthritis?</b>  | <input type="radio"/> | <input type="radio"/> |
| 11. Have you had (or do you currently have) <b>Asthma?</b>   | <input type="radio"/> | <input type="radio"/> |
| 12. Have you had (or do you currently have) an <b>Autoimmune disease?</b>  | <input type="radio"/> | <input type="radio"/> |
| 13. Have you had (or do you currently experiencing) <b>Bullying?</b>   | <input type="radio"/> | <input type="radio"/> |
| 14. Have you had (or do you currently have) <b>Chronic Pain?</b>   | <input type="radio"/> | <input type="radio"/> |
| 15. Have you had (or do you currently have) <b>Dementia/Alzheimer's?</b>   | <input type="radio"/> | <input type="radio"/> |
| 16. Have you had (or do you currently have) <b>Diabetes?</b>   | <input type="radio"/> | <input type="radio"/> |
| 17. Have you had (or do you currently have) <b>Emphysema/COPD?</b>   | <input type="radio"/> | <input type="radio"/> |
| 18. Have you had (or do you currently have) an <b>Eye Condition (cataracts, glaucoma, macular degeneration)?</b> | <input type="radio"/> | <input type="radio"/> |
| 19. Have you had (or do you currently have) a <b>Fall or Fall related injury?</b>                                | <input type="radio"/> | <input type="radio"/> |
| 20. Have you had (or do you currently have) <b>Hearing Loss/Deafness?</b>  | <input type="radio"/> | <input type="radio"/> |
| 21. Have you had (or do you currently have) <b>High Blood Pressure?</b>  | <input type="radio"/> | <input type="radio"/> |
| 22. Have you had (or do you currently have) <b>Osteoporosis?</b>   | <input type="radio"/> | <input type="radio"/> |
| 23. Have you had (or do you currently have) a <b>Heart Condition?</b>  | <input type="radio"/> | <input type="radio"/> |
| 24. Have you had (or do you currently have) high levels of <b>Stress?</b>  | <input type="radio"/> | <input type="radio"/> |
| 25. Have you had a <b>Stroke?</b>  | <input type="radio"/> | <input type="radio"/> |

**Have you experienced a lack of financial resources that led to problems accessing any of the following:**

- |                  | Y                     | N                     |
|------------------|-----------------------|-----------------------|
| 26. Dental care  | <input type="radio"/> | <input type="radio"/> |
| 27. Medical care | <input type="radio"/> | <input type="radio"/> |
| 28. Medications  | <input type="radio"/> | <input type="radio"/> |



# Community Health Assessment Survey

## West Tennessee Healthcare

**Have you experienced a lack of transportation that led to problems accessing any of the following**

- |   | Y                     | N  |
|---|-----------------------|--|
| 29. Dental care   | <input type="radio"/> | <input type="radio"/>                              |
| 30. Medical care  | <input type="radio"/> | <input type="radio"/>                              |
| 31. Medications   | <input type="radio"/> | <input type="radio"/>                              |
| 32. Do you have access to <b>Healthy Foods</b> (fresh fruits & vegetables, lean meats, whole grain products, low fat milk products) | <input type="radio"/> | <input type="radio"/>                              |
| 33. How far must you travel to access <b>Healthy Foods</b> listed above?  |                       |  |
| <input type="radio"/> less than one mile  |                       | <input type="radio"/> over one mile to three miles |
| <input type="radio"/> over three miles to five miles  |                       | <input type="radio"/> over five miles to ten miles |
| <input type="radio"/> over ten miles  |                       |  |
| 34. Do you have access to <b>Information/Education</b> about your health issues, if any?  | <input type="radio"/> | <input type="radio"/>                              |
| 35. Do you have access to <b>Child or Adult Care</b> ?  | <input type="radio"/> | <input type="radio"/>                              |
| 36. Do you have access to facilities or places for <b>Physical Activity</b> ?   | <input type="radio"/> | <input type="radio"/>                              |
| 37. Do you have a family history of:  |                       |  |
| <input type="radio"/> suicide <input type="radio"/> heart failure <input type="radio"/> opioid use                                  |                       |  |
| 38. Have you or family member had the COVID-19 vaccine?   | <input type="radio"/> | <input type="radio"/>                              |
| 39. Have you or family member had COVID-19?   | <input type="radio"/> | <input type="radio"/>                              |

**The following questions ask about difficult situations that may cause you to feel upset..if so please talk with someone you consider safe or contact a health professional or counselor.**

**Prior to your 18th birthday, did you experience and of the following?**

- |   | Y                     | N                     |
|---|-----------------------|-----------------------|
| 40. Did a parent or other adult in the household often swear at you, insult you, put you down or humiliate you? OR act in a way that made you afraid that you might be physically harmed?             | <input type="radio"/> | <input type="radio"/> |
| 41. Did an adult or person at least 5 years older than you ever touch or fondle you or have you touch their body in a sexual way? OR try to have oral, anal, or vaginal sex with you?                 | <input type="radio"/> | <input type="radio"/> |
| 42. Did you often feel that no one in your family loved you or thought you were important or special? OR Your family didn't look out for each other, feel close to each other, or support each other? | <input type="radio"/> | <input type="radio"/> |
| 43. Did a parent or other adult in the household often push, grab, slap, or throw something at you? OR ever hit you so hard that you had marks or were injured?                                       | <input type="radio"/> | <input type="radio"/> |
| 44. Were your parents ever separated or divorced?   | <input type="radio"/> | <input type="radio"/> |





# Community Health Assessment Survey

## West Tennessee Healthcare



45. Was your mother or stepmother often pushed, grabbed, slapped or had something thrown at her? OR sometimes or often kicked, bitten, hit with a fist, or hit with something hard? OR ever repeatedly hit or at least a few minutes or threatened with a gun or knife? Y   N  
○ ○
46. Did you live with anyone who was a problem drinker or alcoholic or used street drugs? ○ ○
47. Was a household member depressed or mentally ill or did a household member ever attempt suicide? ○ ○
48. Did a household member ever go to prison? ○ ○
49. Did you often feel that you didn't have enough to eat, had to wear dirty clothes, or had no one to protect you? OR your parents were too drunk or high to take care of you or take you to the doctor if you needed it? ○ ○





# Community Needs Assessment Results

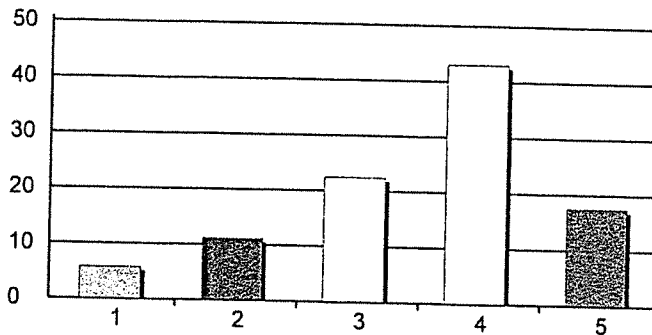
## May 2, 2021

Creation Date: 5/2/2021

Time Interval: 3/28/2021 to 5/2/2021

Total Respondents: 1895

### 1. Age



1. 18-24

109 6%

2. 25-35

211 11%

3. 36-50

423 22%

4. 51-64

811 43%

5. 65+

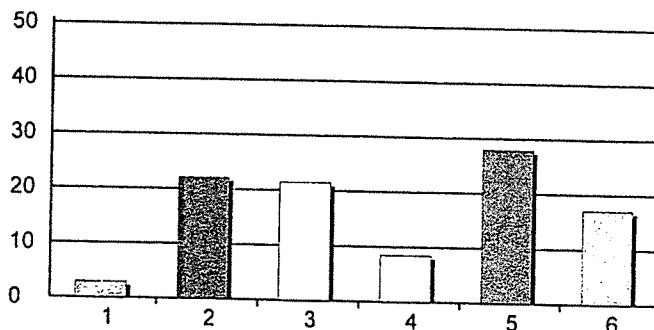
331 18%

Total Responses:

1885

Mean: 3.55 Standard Deviation: 1.08

### 2. Education



1. Less than high school

53 3%

2. High school graduate/GED

409 22%

3. Some college

396 21%

4. Associate degree

156 8%

5. Bachelor degree

516 28%

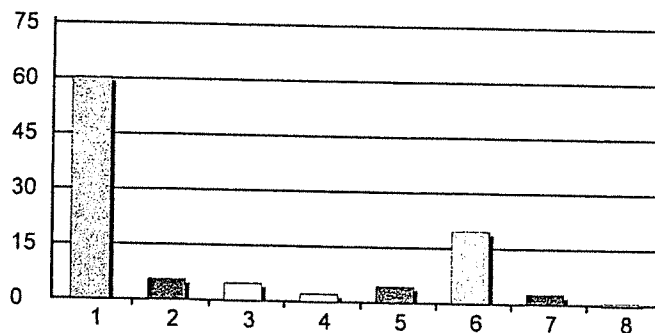
6. Advanced degree

316 17%

Total Responses:

1846

### 3. Employment Status



1. Employed full time

1090 60%

2. Employed part time

101 6%

3. Homemaker full time

84 5%

4. Not working because of acute illness or injury

38 2%

5. Permanently disabled

80 4%

6. Retired

357 20%

7. Student full time

51 3%

8. Student part time

10 1%

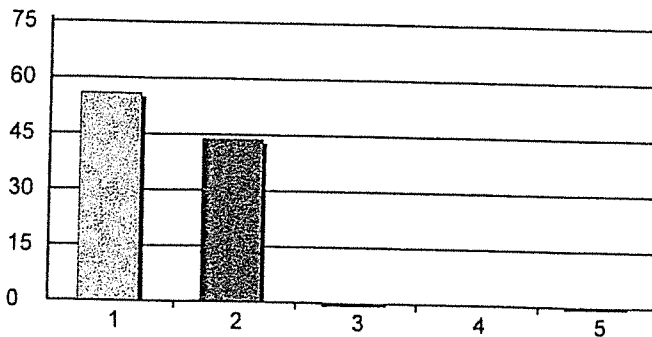
Total Responses:

1811

# Community Needs Assessment Results

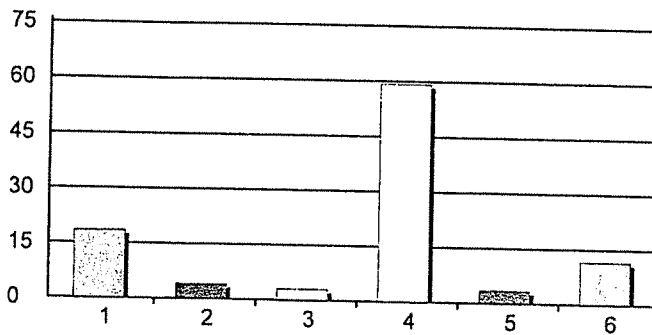
## May 2, 2021

### 4. Gender



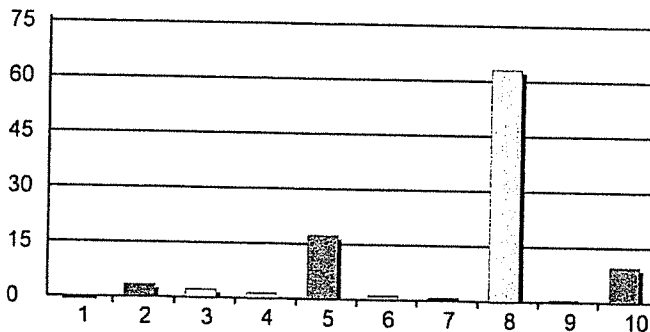
1. Female	1048	56%
2. Male	821	44%
3. Trans Female (Male to Female)	2	0%
4. Trans Male (Female to Male)	0	0%
5. Gender Non-conforming (i.e. not exclusively m...	4	0%
Total Responses:	1875	
Mean: 1.45	Standard Deviation: 0.52	

### 5. Insurance



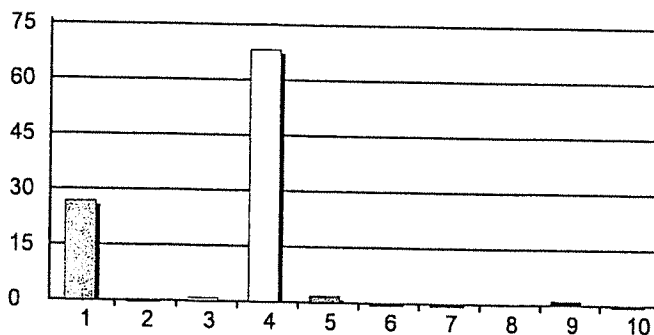
1. Medicare	338	19%
2. No insurance	75	4%
3. Obamacare (Affordable Healthcare)	54	3%
4. Private insurance	1081	59%
5. TennCare	65	4%
6. Other	213	12%
Total Responses:	1826	

### 6. County of Residence



1. Benton	2	0%
2. Chester	64	3%
3. Crockett	42	2%
4. Dyer	25	1%
5. Gibson	328	17%
6. Hardeman	22	1%
7. Haywood	17	1%
8. Madison	1192	63%
9. Weakley	13	1%
10. Other	183	10%
Total Responses:	1888	
Mean: 7.27	Standard Deviation: 1.88	

### 7. Race

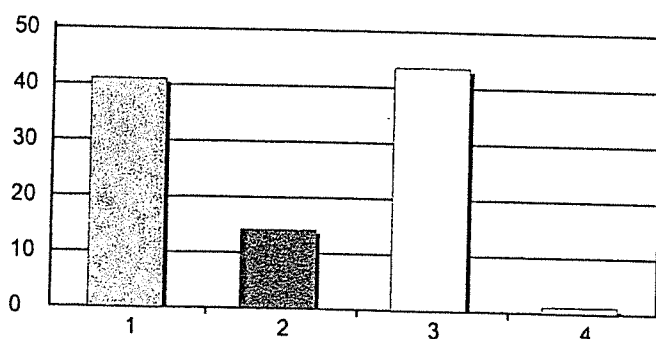


1. African/American	490	27%
2. American Indian/Alaskan Native	7	0%
3. Asian	16	1%
4. Caucasian	1248	68%
5. Hispanic/Latino	33	2%
6. Indian (from India or parents from India)	4	0%
7. Middle Eastern	4	0%
8. Pacific Islander/Polynesian	0	0%
9. Other	23	1%
10. Not sure	5	0%
Total Responses:	1830	

# Community Needs Assessment Results

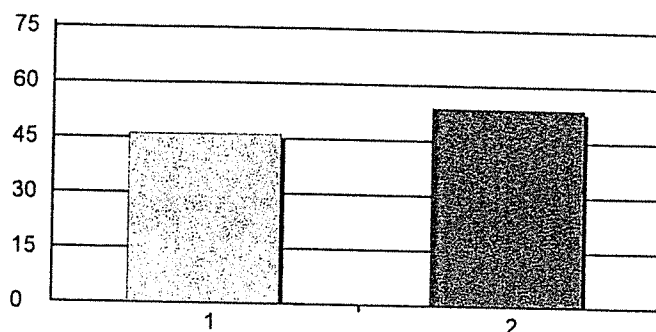
## May 2, 2021

### 8. Weight



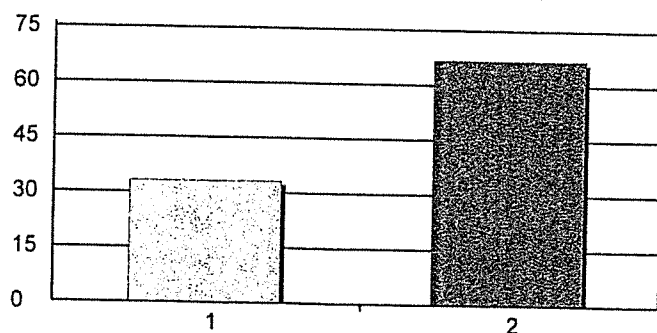
1. Just right	659	41%
2. Obese	229	14%
3. Overweight	699	44%
4. Underweight	18	1%
Total Responses:	1605	

### 9. Have you had (or do you currently have) Allergies?



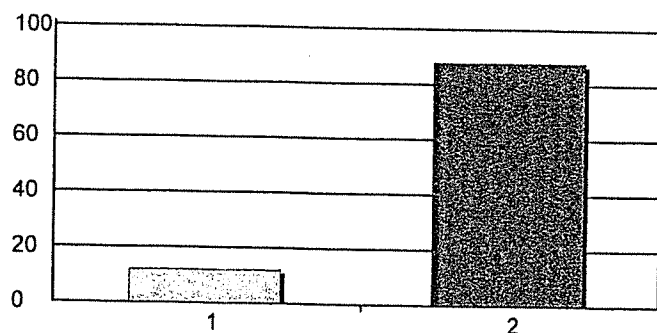
1. Yes	865	46%
2. No	1011	54%
Total Responses:	1876	
Mean: 1.54	Standard Deviation: 0.50	

### 10. Have you had (or do you currently have) Arthritis?



1. Yes	621	33%
2. No	1250	67%
Total Responses:	1871	
Mean: 1.67	Standard Deviation: 0.47	

### 11. Have you had (or do you currently have) Asthma?

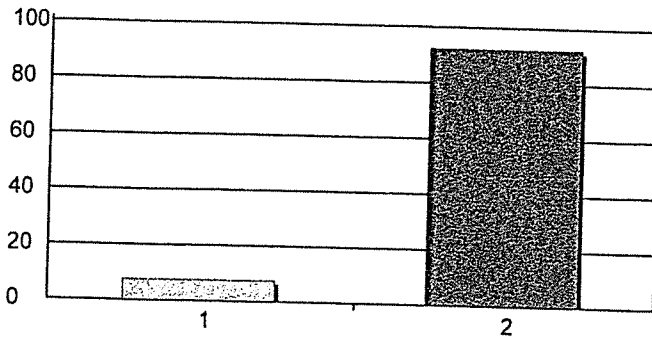


1. Yes	226	12%
2. No	1654	88%
Total Responses:	1880	
Mean: 1.88	Standard Deviation: 0.33	

# Community Needs Assessment Results

## May 2, 2021

12. Have you had (or do you currently have) an **Autoimmune disease?**



1. Yes

2. No

Total Responses:

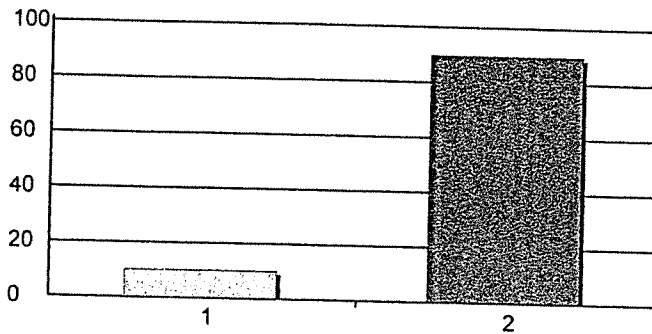
Mean: 1.92 Standard Deviation: 0.26

141 8%

1729 92%

1870

13. Have you had (or do you currently experiencing) **Bullying?**



1. Yes

2. No

Total Responses:

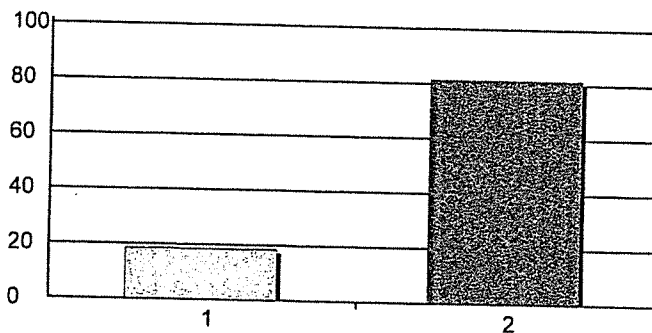
Mean: 1.90 Standard Deviation: 0.30

188 10%

1679 90%

1867

14. Have you had (or do you currently have) **Chronic Pain?**



1. Yes

2. No

Total Responses:

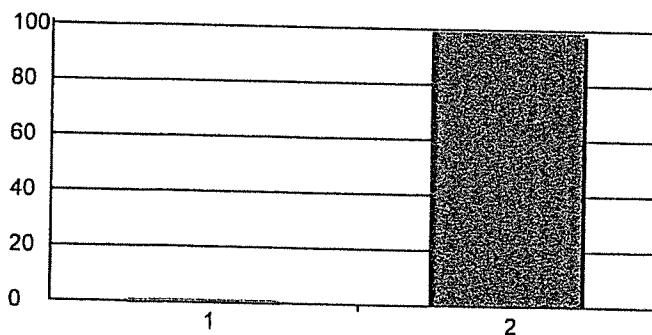
Mean: 1.82 Standard Deviation: 0.39

347 18%

1532 82%

1879

15. Have you had (or do you currently have) **Dementia/Alzheimer's?**



1. Yes

2. No

Total Responses:

Mean: 1.99 Standard Deviation: 0.09

15 1%

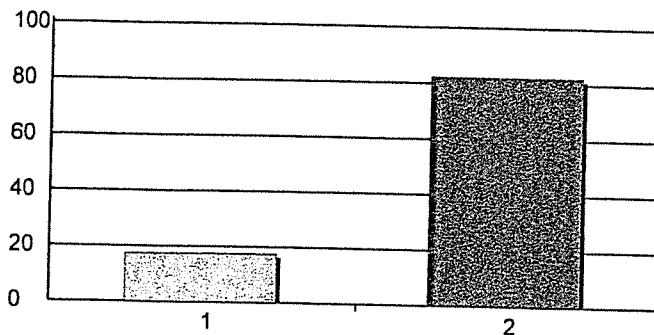
1859 99%

1874

# Community Needs Assessment Results

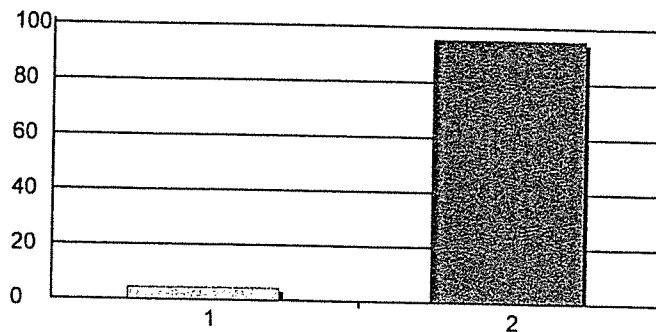
## May 2, 2021

16. Have you had (or do you currently have) **Diabetes**?



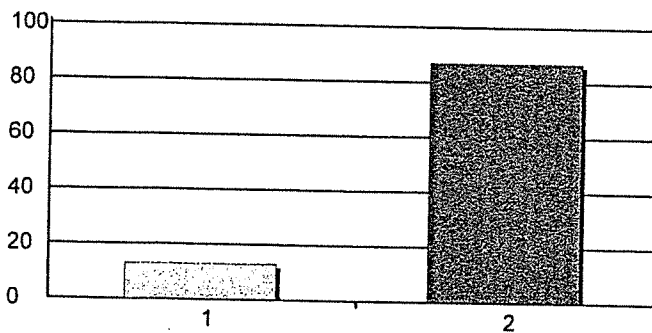
1. Yes 329 18%  
 2. No 1544 82%  
 Total Responses: 1873  
 Mean: 1.82 Standard Deviation: 0.38

17. Have you had (or do you currently have) **Emphysema/COPD**?



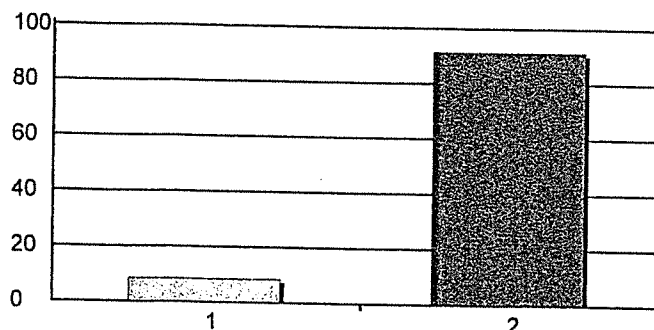
1. Yes 83 4%  
 2. No 1787 96%  
 Total Responses: 1870  
 Mean: 1.96 Standard Deviation: 0.21

18. Have you had (or do you currently have) an **Eye Condition (cataracts, glaucoma, macular degeneration)**?



1. Yes 243 13%  
 2. No 1631 87%  
 Total Responses: 1874  
 Mean: 1.87 Standard Deviation: 0.34

19. Have you had (or do you currently have) a **Fall or Fall related injury**?

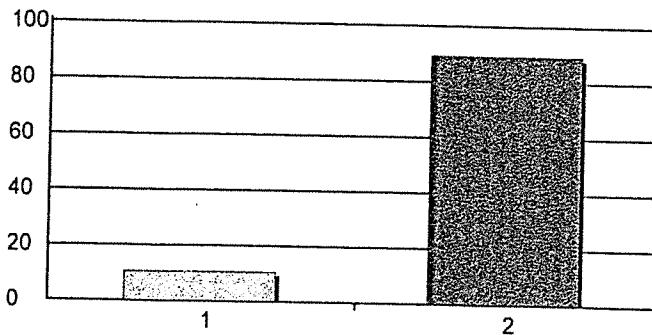


1. Yes 159 8%  
 2. No 1720 92%  
 Total Responses: 1879  
 Mean: 1.92 Standard Deviation: 0.28

# Community Needs Assessment Results

## May 2, 2021

20. Have you had (or do you currently have) **Hearing Loss/Deafness**?



1. Yes

199 11%

2. No

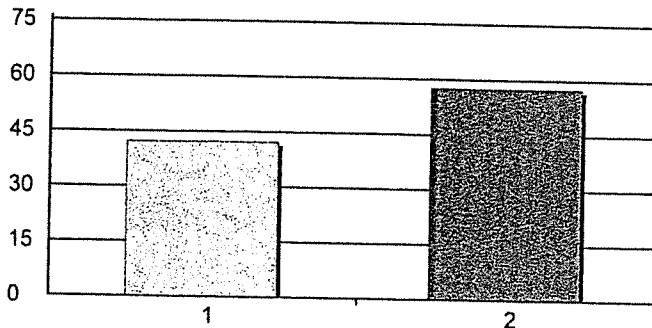
1676 89%

Total Responses:

1875

Mean: 1.89 Standard Deviation: 0.31

21. Have you had (or do you currently have) **High Blood Pressure**?



1. Yes

790 42%

2. No

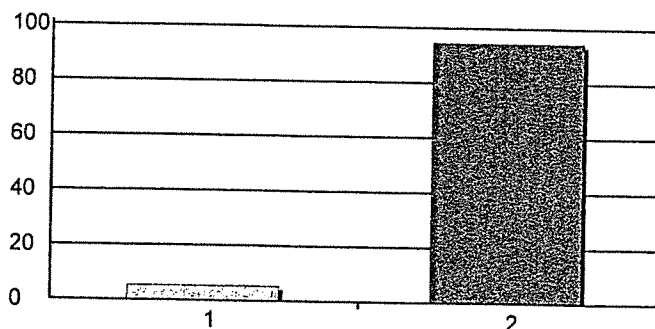
1078 58%

Total Responses:

1868

Mean: 1.58 Standard Deviation: 0.49

22. Have you had (or do you currently have) **Osteoporosis**?



1. Yes

101 5%

2. No

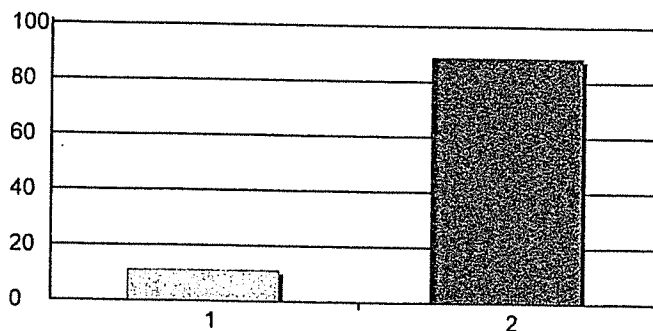
1770 95%

Total Responses:

1871

Mean: 1.95 Standard Deviation: 0.23

23. Have you had (or do you currently have) a **Heart Condition**?



1. Yes

208 11%

2. No

1665 89%

Total Responses:

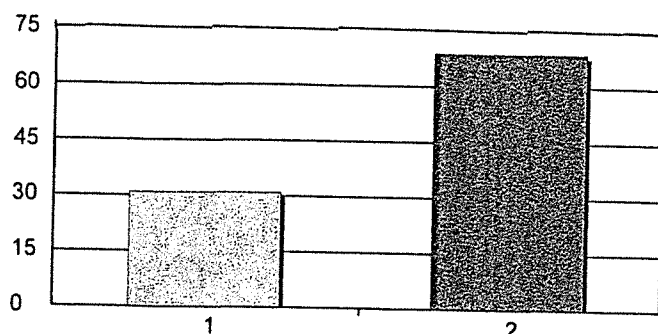
1873

Mean: 1.89 Standard Deviation: 0.31

# Community Needs Assessment Results

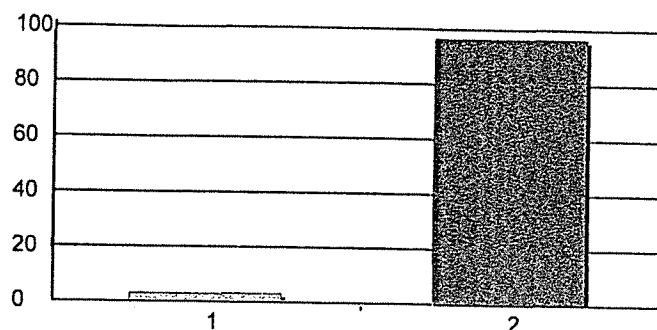
## May 2, 2021

24. Have you had (or do you currently have) high levels of Stress?



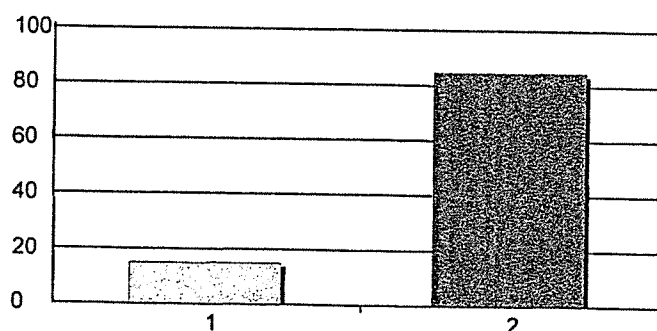
1. Yes 581 31%  
 2. No 1293 69%  
 Total Responses: 1874  
 Mean: 1.69 Standard Deviation: 0.46

25. Have you had a Stroke?



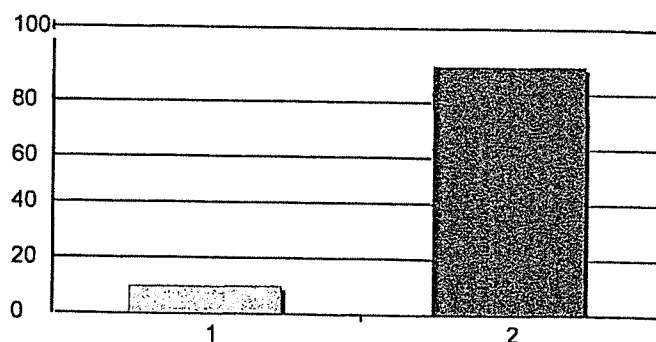
1. Yes 62 3%  
 2. No 1806 97%  
 Total Responses: 1868  
 Mean: 1.97 Standard Deviation: 0.18

26. Lack of financial resources for: Dental care



1. Yes 279 15%  
 2. No 1585 85%  
 Total Responses: 1864  
 Mean: 1.85 Standard Deviation: 0.36

27. Lack of financial resources for: Medical care

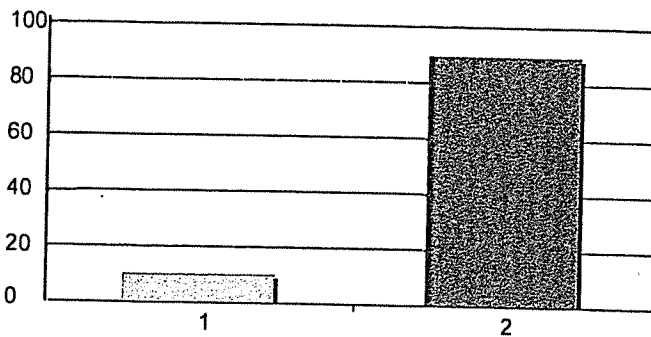


1. Yes 185 10%  
 2. No 1673 90%  
 Total Responses: 1858  
 Mean: 1.90 Standard Deviation: 0.30

# Community Needs Assessment Results

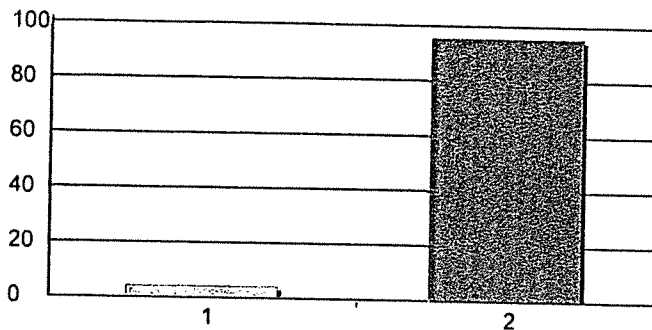
## May 2, 2021

### 28. Lack of financial resources for: Medications



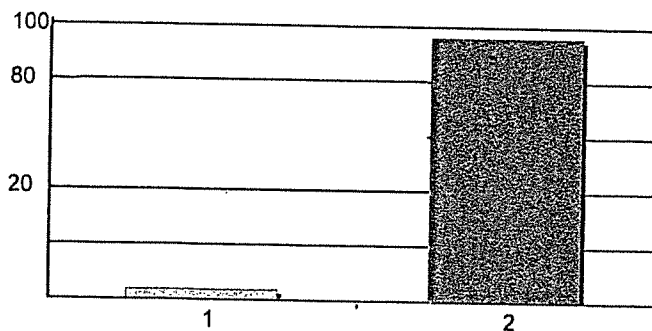
1. Yes 189 10%  
 2. No 1664 90%  
 Total Responses: 1853  
 Mean: 1.90 Standard Deviation: 0.30

### 29. Lack transportationDental care



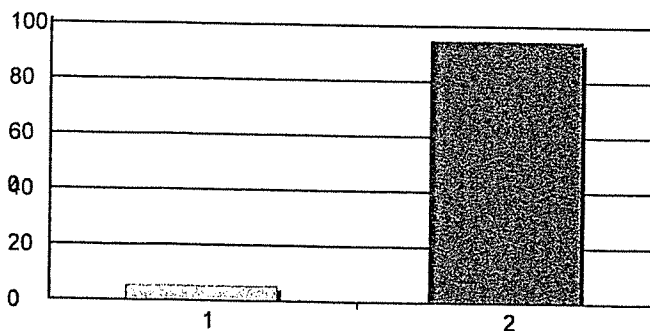
1. Yes 82 4%  
 2. No 1774 96%  
 Total Responses: 1856  
 Mean: 1.96 Standard Deviation: 0.21

### 30. Lack transportation: Medical care



1. Yes 72 4%  
 2. No 1781 96%  
 Total Responses: 1853  
 Mean: 1.96 Standard Deviation: 0.19

### 31. Lack transportation: Medications



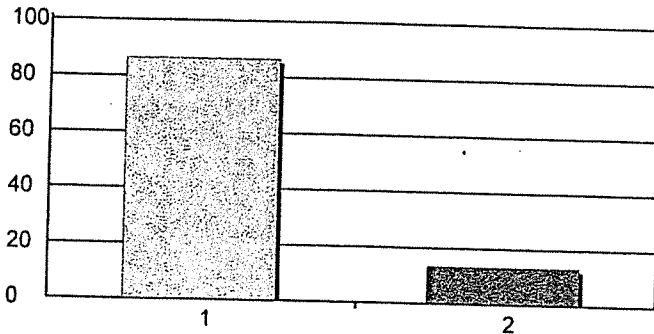
1. Yes 96 5%  
 2. No 1734 95%  
 Total Responses: 1830  
 Mean: 1.95 Standard Deviation: 0.22



# Community Needs Assessment Results

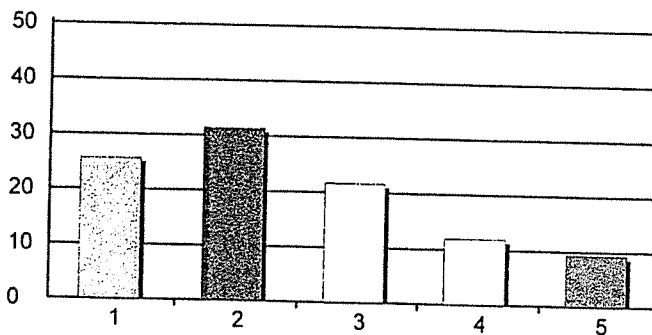
## May 2, 2021

32. Do you have access to **Healthy Foods** (fresh fruits & vegetables, lean meats, whole grain products, low fat milk products)



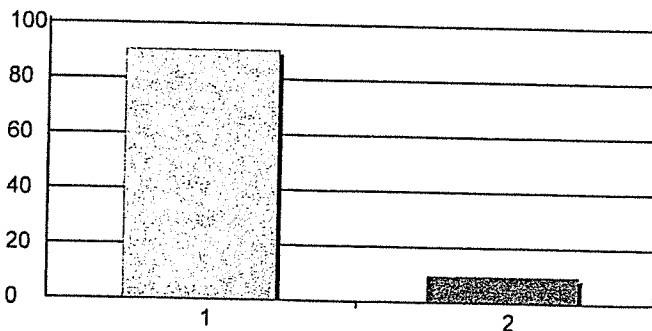
1. Yes 1510 86%  
 2. No 236 14%  
 Total Responses: 1746  
 Mean: 1.14 Standard Deviation: 0.34

33. Mileage How far must you travel to access Healthy Foods?



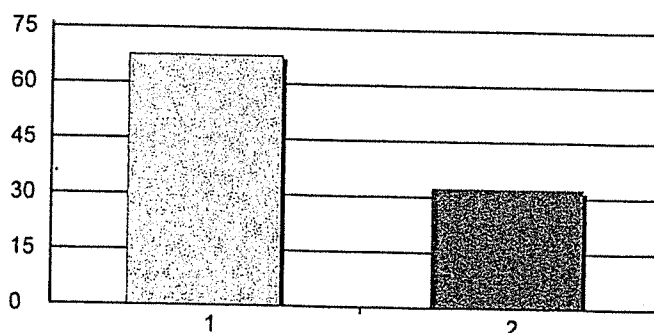
1. less than one mile 450 26%  
 2. over one mile to three miles 550 31%  
 3. over three miles to five miles 379 22%  
 4. over five miles to ten miles 210 12%  
 5. over ten miles 164 9%  
 Total Responses: 1753  
 Mean: 2.48 Standard Deviation: 1.25

34. Mileage Do you have access to information about your health issues?



1. Yes 1665 90%  
 2. No 177 10%  
 Total Responses: 1842  
 Mean: 1.10 Standard Deviation: 0.29

35. Mileage Do you have access to Adult or Child Care?

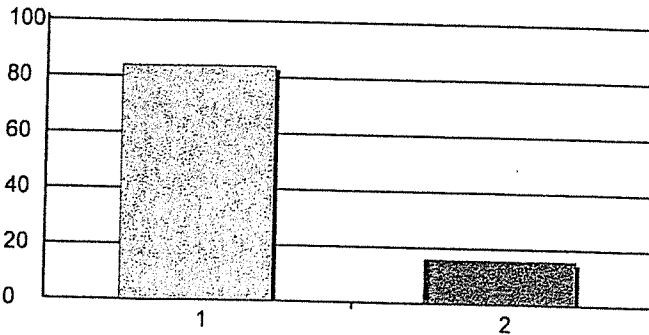


1. Yes 1181 68%  
 2. No 566 32%  
 Total Responses: 1747  
 Mean: 1.32 Standard Deviation: 0.47

# Community Needs Assessment Results

## May 2, 2021

36. Mileage Do you have access to facilities for physical activity?



1. Yes

2. No

Total Responses:

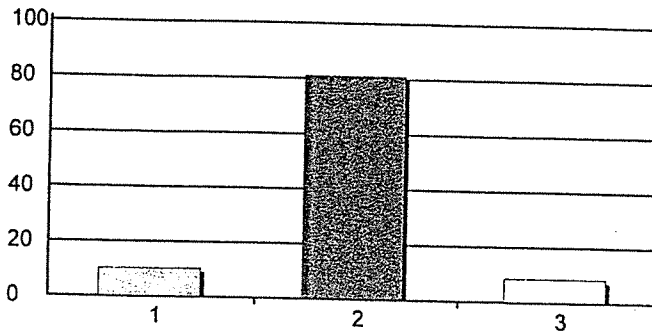
Mean: 1.16 Standard Deviation: 0.37

1520 84%

288 16%

1808

37. Mileage Do you have a family history of:



1. suicide

2. heart failure

3. opioid use

Total Responses:

Mean: 1.98 Standard Deviation: 0.43

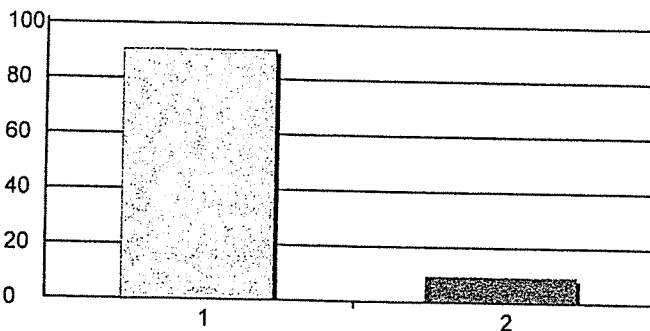
59 10%

463 81%

49 9%

571

38. Mileage Have you or family member had COVID-19 vaccine?



1. Yes

2. No

Total Responses:

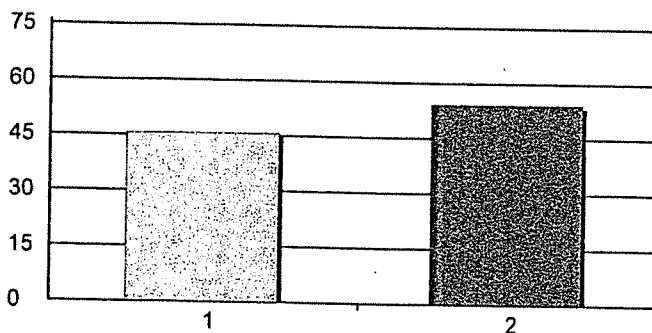
Mean: 1.09 Standard Deviation: 0.29

1671 91%

173 9%

1844

39. Mileage Have you or family member had COVID-19?



1. Yes

2. No

Total Responses:

Mean: 1.54 Standard Deviation: 0.50

844 46%

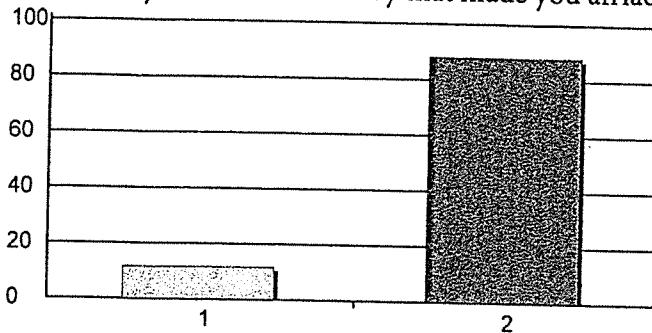
1004 54%

1848

# Community Needs Assessment Results

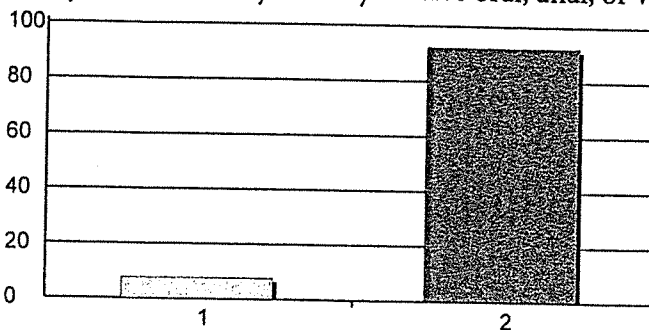
## May 2, 2021

40. Mileage Did a parent or other adult in the household often swear at you, insult you, put you down, or humiliate you? OR act in a way that made you afraid that you might be physically harmed?



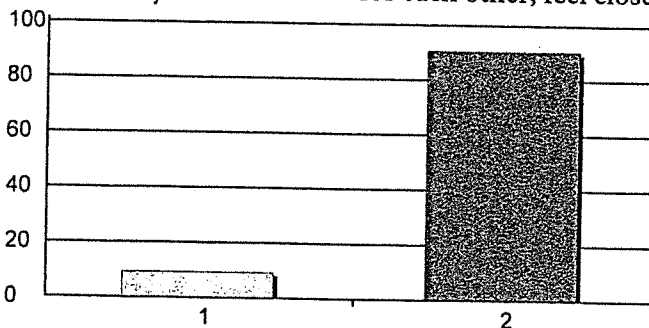
Mean: 1.88 Standard Deviation: 0.32

41. Mileage Did an adult or person at least 5 years older than you ever touch or fondle you or have you touch their body in a sexual way? OR try to have oral, anal, or vaginal sex with you?



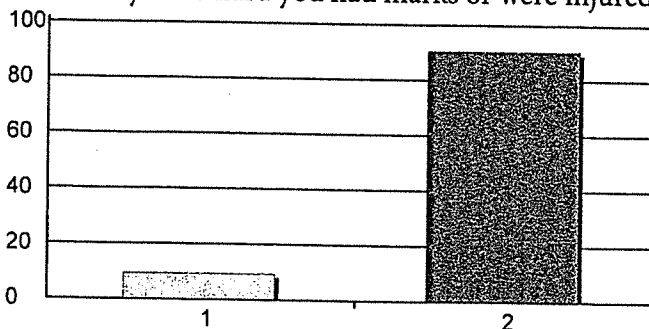
Mean: 1.92 Standard Deviation: 0.27

42. Mileage Did you often feel that no one in your family loved you or thought you were important or special? OR Your family didn't look out for each other, feel close to each other, or support each other?



Mean: 1.91 Standard Deviation: 0.29

43. Mileage Did a parent or other adult in the household often push, grab, slap, or throw something at you? OR ever hit you so hard you had marks or were injured?

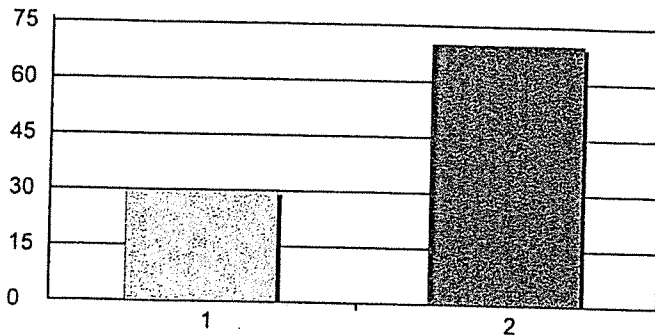


Mean: 1.91 Standard Deviation: 0.29

# Community Needs Assessment Results

## May 2, 2021

44. Mileage Were your parents ever separated or divorced?



1. Yes

543 30%

2. No

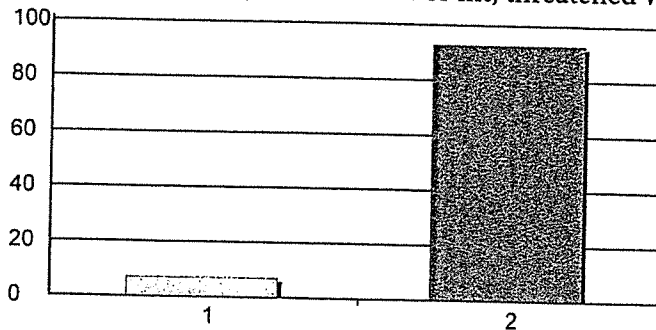
1276 70%

Total Responses:

1819

Mean: 1.70 Standard Deviation: 0.46

45. Mileage Was your mother or stepmother often pushed, grabbed, slapped, or had something thrown at her? Or kicked, bitten, hit with a fist or hit, threatened with a gun or knife?



1. Yes

126 7%

2. No

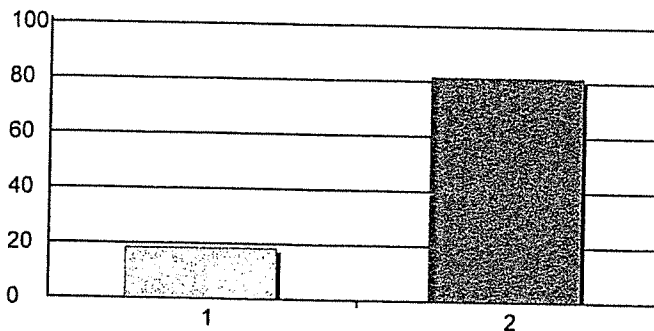
1660 93%

Total Responses:

1786

Mean: 1.93 Standard Deviation: 0.26

46. Mileage Did you live with anyone who was a problem drinker or alcoholic, or used street drugs?



1. Yes

328 18%

2. No

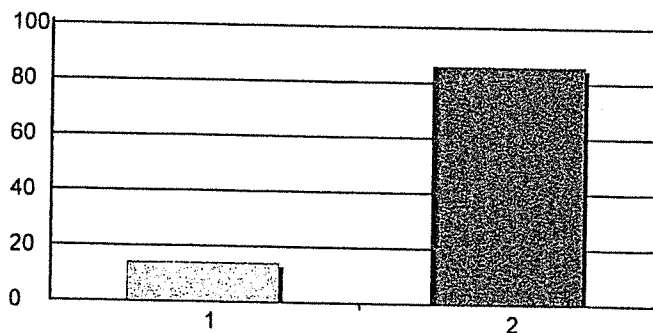
1461 82%

Total Responses:

1789

Mean: 1.82 Standard Deviation: 0.39

47. Mileage Was a household member depressed or mentally ill or did a household member ever attempt suicide?



1. Yes

251 14%

2. No

1547 86%

Total Responses:

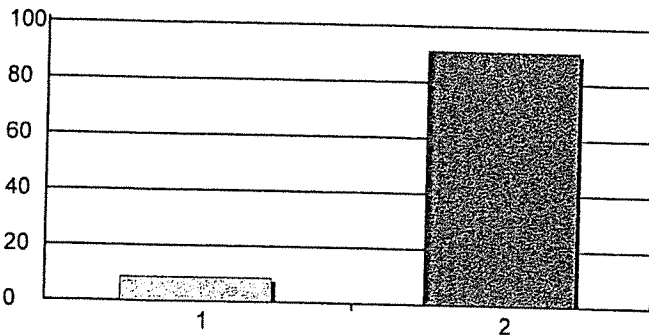
1798

Mean: 1.86 Standard Deviation: 0.35

# Community Needs Assessment Results

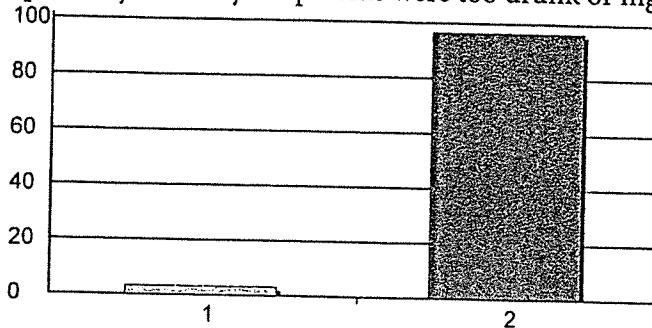
## May 2, 2021

48. Mileage Did a household member every go to prison?



1. Yes 156 9%  
 2. No 1643 91%  
 Total Responses: 1799  
 Mean: 1.91 Standard Deviation: 0.28

49. Mileage Did you often feel that you did not have enough to eat, had to wear dirty clothes, or had no one to protect you? OR your parents were too drunk or high to take care of you or take you to the



1. Yes 58 3%  
 2. No 1743 97%  
 Total Responses: 1801  
 Mean: 1.97 Standard Deviation: 0.18  
 doctor?