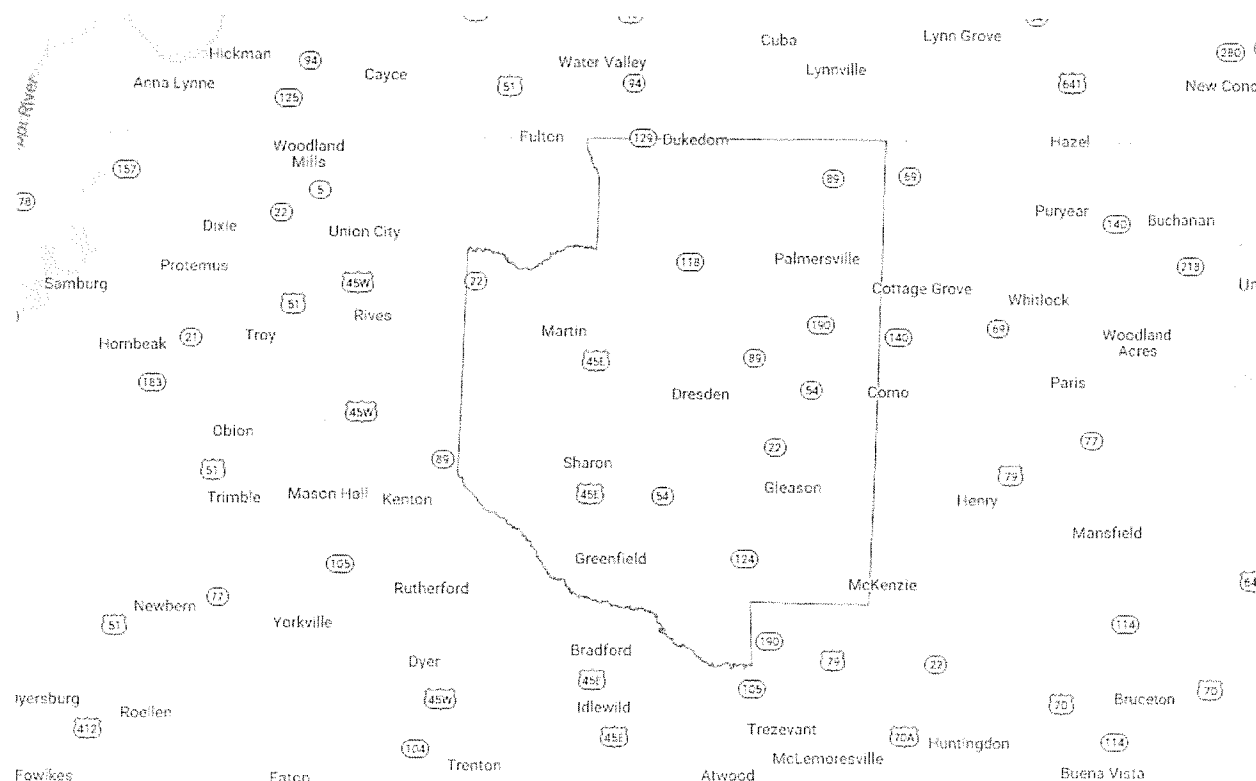


# **Community Health Needs Assessment**

## **Weakley County, Tennessee**



**Conducted by:**

**Department of Community Development**

**Victoria S. Lake**

**Update October 2021**

**In fulfillment of requirements of the Patient Protection and Affordable Care Act  
Pub.L.No.111-148, 124 Stat. 119, enacted March 23, 2010; and Department of Treasury  
Internal Revenue Service 26 CFR Parts 1, 53, and 62 *Additional Requirements for  
Charitable Hospitals; Community Health Needs Assessments for Charitable Hospitals;  
Requirement of a Section 4959 Excise Tax Return and Time for filing the Return.***

RESOLUTION OF THE BOARD OF TRUSTEES  
OF  
JACKSON-MADISON COUNTY GENERAL HOSPITAL DISTRICT  
AND  
CAMDEN GENERAL HOSPITAL, INC.  
AND  
BOLIVAR GENERAL HOSPITAL, INC.  
AND  
MILAN GENERAL HOSPITAL, INC.  
AND  
DYERSBURG HEALTH  
AND  
MARTIN HEALTH  
AND  
PATHWAYS OF TENNESSEE, INC.

COMMUNITY HEALTH NEEDS ASSESSMENT APPROVAL

WHEREAS, the Patient Protection and Affordable Care Act, enacted March 10, 2010, requires public and not-for-profit hospitals to perform a Community Health Needs Assessment for each hospital; and

WHEREAS, the staff of the District has conducted such an Assessment and prepared the report as required for each of its hospitals; and

WHEREAS, the Assessments were prepared in accordance with IRS rules and regulations, as amended, regarding Community Health Needs Assessments for Tax Exempt Hospitals; and

WHEREAS, the Board finds that the Assessments substantially meet the requirements of the of the Patient Protection and Affordable Care Act and the applicable IRS rules and regulations, and that the Implementation Strategies set forth in the Assessments shall be implemented in accordance with Management recommendations.

NOW, THEREFORE, BE IT RESOLVED, that the Community Health Needs Assessments given to the Board are approved and adopted.

ADOPTED, this the 26th day of October, 2021.

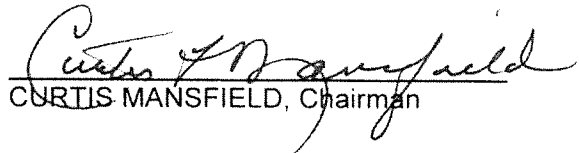
  
CURTIS MANSFIELD, Chairman

EXHIBIT: 2-5



# 2021 Community Health Needs Assessment

Executive Summary

# 2021 Assessment

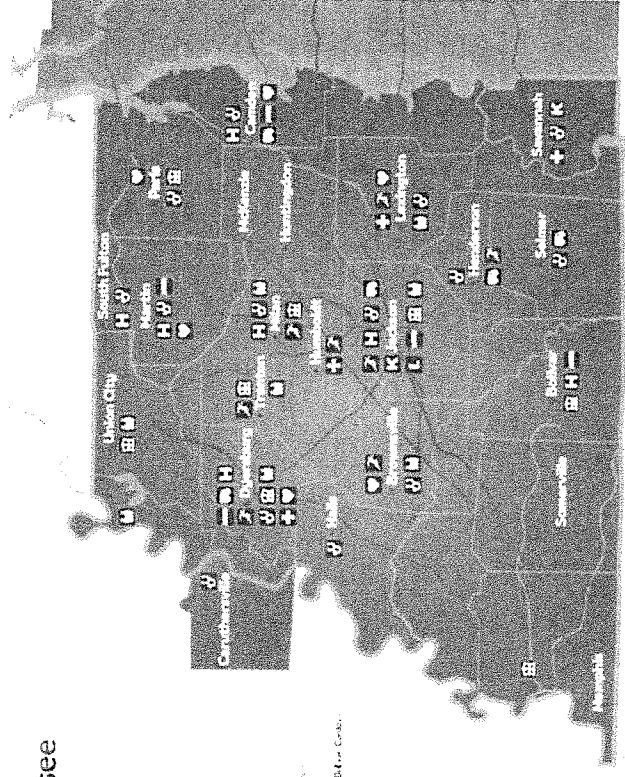
Assessments were conducted for Madison, Benton, Chester, Crockett, Dyer, Gibson, Haywood, Hardeman, Weakley, and for Pathways as a mental health hospital.

The 2021 Assessment was an update of those conducted 2012, 2015, and 2018.



## Services

- Hospitals**  
Benton, Chester, Crockett, Dyer, Gibson, Haywood, Madison, Weakley
- Medical Centers**  
Benton, Chester, Crockett, Dyer, Gibson, Haywood, Madison, Weakley
- West Tennessee Medical Group**  
Benton, Chester, Crockett, Dyer, Gibson, Haywood, Madison, Weakley
- Heart**  
Benton, Chester, Crockett, Dyer, Gibson, Haywood, Madison, Weakley
- Hospital Home Health**  
Benton, Chester, Crockett, Dyer, Gibson, Haywood, Madison, Weakley
- Pathways**  
Benton, Chester, Crockett, Dyer, Gibson, Haywood, Madison, Weakley
- Sleep Centers**  
Benton, Chester, Crockett, Dyer, Gibson, Haywood, Madison, Weakley
- Sports Plus Centers**  
Benton, Chester, Crockett, Dyer, Gibson, Haywood, Madison, Weakley
- Kirkland Cancer Center**  
Benton, Chester, Crockett, Dyer, Gibson, Haywood, Madison, Weakley
- Lift Wellness Center**  
Benton, Chester, Crockett, Dyer, Gibson, Haywood, Madison, Weakley
- EMS**  
Benton, Chester, Crockett, Dyer, Gibson, Haywood, Madison, Weakley

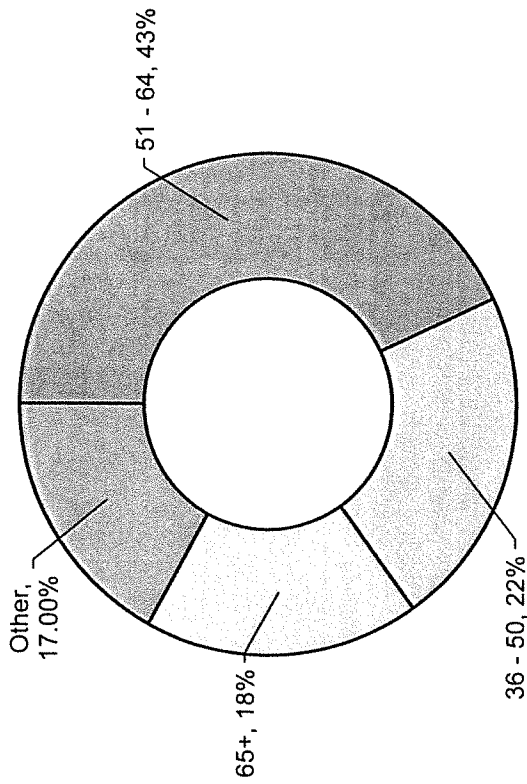


# Methodology

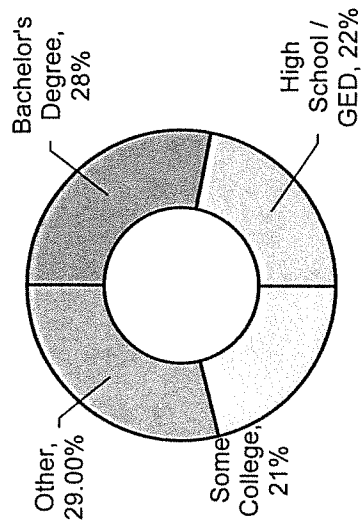
- The first stage of the Update process involved gathering secondary data from multiple sources for each county.
- The second step in the Community Health Needs Assessment Update process consisted of creating a survey to collect data from residents on local health issues. The survey consisted of 49 questions that asked basic demographics of age, race, education level, insurance, county of residence, presence or absence of specific health issues, access to care, physical activity, health information, and ten questions on adverse childhood experiences prior to 18th birthday. Respondents were requested to answer a simple “yes” or “no” to specific health issues and adverse childhood experiences.
- The survey instrument was distributed by hand during community wide COVID-19 vaccination clinics at Lane College and Humboldt Medical Center on March 20, 2021; and Jackson-Madison County General Hospital on March 30, 2021. **Data from 1,895 completed surveys was collected.**

# Respondents

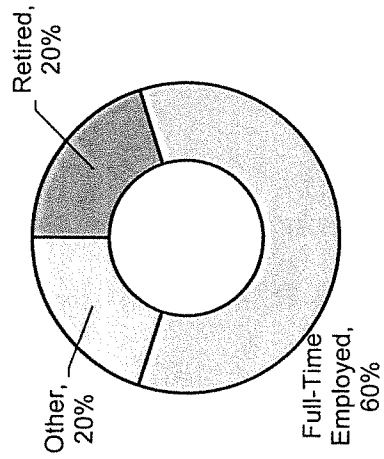
By Age



Education Level



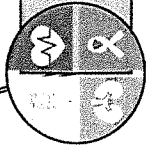
Employment Status



# Priority Health Issues Acute Care



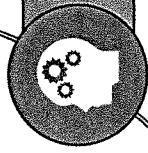
COVID-19



Chronic Health Conditions



Obesity



Mental Health & Substance Abuse

# Priority Behavioral Health Issues Pathways

Child Welfare

Domestic Violence/Anger Management

Co-Occurring Mental Health & Substance Abuse

Alcohol, Drug, and Prescription Drug Abuse (emphasis on Opioid Crisis)

Suicide



## **Table of Contents**

West Tennessee Healthcare Community Needs Assessment Summary 2021	1
Introduction	2
Description of the Hospital and Community	2
Description of Community Health Needs Assessment Update Process	4
Results of Survey	6
Survey Respondent Demographics	7
Results of Secondary Data Analysis	10
Priority Health Issues	13
Conclusion	13

Attachment A	Secondary Data
Attachment B	Summary-Secondary Data
Attachment C	Community Health Assessment Survey Instrument
Attachment D	Community Health Assessment Survey Results

## West Tennessee Healthcare Community Health Needs Assessment Summary 2021

Needs assessments were completed in fulfillment of requirements of the Patient Protection and Affordable Care Act Pub.L.No.111-148, 124 Stat. 119, enacted March 23, 2010; and Department of Treasury Internal Revenue Service 26 CFR Parts 1, 53, and 62 *Additional Requirements for Charitable Hospitals; Community Health Needs Assessments for Charitable Hospitals; Requirement of a Section 4959 Excise Tax Return and Time for filing the Return.*

Assessments were conducted for Madison, Benton, Chester, Crockett, Dyer, Gibson, Haywood, Hardeman, Weakley, and for Pathways as a mental health hospital. This document reflects work done for the Weakley County Community Health Needs Assessment.

The 2021 needs assessments were update of those conducted in 2012, 2015, and 2018. Because of high volumes of COVID-19, this is a limited needs assessment conducted by a committee of West Tennessee Healthcare staff. Tennessee Department of Health Community Health Councils are not meeting on a regular basis due to COVID-19 so input from community representatives was not available. Jackson-Madison County General Hospital and other community agencies are conducting very little community outreach efforts. WTH staff will reconvene the Needs Assessment Committee in 2022, and upon consultation with the Health Council, will update outreach strategies.

The first stage of the Update process involved gathering secondary data from multiple sources for each county. The second step in the Community Health Needs Assessment Update process consisted of creating a survey to collect data from residents on local health issues. The survey consisted of 49 questions that asked basic demographics of age, race, education level, insurance, county of residence, presence or absence of specific health issues, access to care, physical activity, health information, and ten questions on adverse childhood experiences prior to 18<sup>th</sup> birthday. Respondents were requested to answer a simple “yes” or “no” to specific health issues and adverse childhood experiences.

The survey instrument was distributed by hand during community wide COVID-19 vaccination clinics at Lane College and Humboldt Medical Center on March 20, 2021; and Jackson-Madison County General Hospital on March 30, 2021. Data from 1,895 completed surveys was collected.

Sixteen WTH staff and two members from Quality Council were asked to serve on an Internal Committee to review secondary and survey data. Surveys were distributed at several locations, and data were requested on basic respondent demographics. The age group 51 to 64 represented 43 percent of respondents, followed by age 36 to 50 (22 percent), and age 65 and older (18 percent). The predominant education level is respondents with a Bachelors degree (28 percent), followed by high school graduate/ GED (22 percent) and some college (21 percent). Sixty percent (60 percent) of respondents were working full time and 20 percent were retired. A majority of individuals completing the survey were women (56 percent), had private health insurance (59 percent, and were Caucasian (68 percent)

Upon a review of survey responses and secondary data, four priority health issues were identified.

COVID-19

Chronic Health Conditions

Obesity

Mental Health and Substance Abuse Issues

Pathways Issues

Depression

Domestic Violence/Anger Management

Co-Occurring Mental Health & Substance Abuse

Alcohol, Drug, and Prescription Drug Abuse (emphasis on Opioid Crisis)

Suicide

## **Introduction**

Under the leadership of West Tennessee Healthcare Volunteer Hospital, a community health needs assessment was conducted in 2021. The needs assessment was completed in fulfillment of requirements of the Patient Protection and Affordable Care Act Pub.L.No.111-148, 124 Stat. 119, enacted March 23, 2010; and Department of Treasury Internal Revenue Service 26 CFR Parts 1, 53, and 62 *Additional Requirements for Charitable Hospitals; Community Health Needs Assessments for Charitable Hospitals; Requirement of a Section 4959 Excise Tax Return and Time for filing the Return.*

This 2021 needs assessment is an update of those conducted in 2012, 2015, and 2018. Because of high volumes of COVID-19, this is a limited needs assessment conducted by a committee of West Tennessee Healthcare staff. Tennessee Department of Health Community Health Councils are not meeting on a regular basis due to COVID-19 so input from community representatives was not available. West Tennessee Healthcare Volunteer Hospital and other community agencies are conducting very little community outreach efforts. The Hospital will reconvene the Needs Assessment Committee in 2022, and upon consultation with the Health Council, will update outreach strategies. The process used to conduct this limited assessment is described in the following pages.

## **Description of the Hospital and Community**

West Tennessee Healthcare Volunteer Hospital was acquired by the Jackson-Madison County General Hospital District in 2018 with 100 licensed beds. The Hospital is a member of the American Hospital Association, Tennessee Hospital Association, and is accredited by The Joint Commission. West Tennessee Healthcare Dyersburg Hospital is approved by the U.S. Department of Health and Human Services for participation in Medicare and Medicaid Programs. The primary service area is Weakley County.

The Hospital offers a range of medical, diagnostic, and surgical services including 24-hour emergency care, intensive care unit, and obstetrical unit. Services include diagnostic, interventional, imaging, emergency department, family medicine, GI/endoscopy services,

laboratory, neurology, orthopedic, pediatrics, physical therapy, sleep center, surgical services, telemedicine, and outpatient services.

The designated “community” for the needs assessment is Weakley County, Tennessee.

With a 2020 Decennial Census population of 32,902, Weakley County is located in rural Northwest Tennessee approximately 137 miles North East of Memphis. The population is 2.8 percent Hispanic and 97.2 percent Other. According to the Tennessee Department of Economic & Community Development, 20.3 percent of persons living in households are below the Federal poverty level. The personal income per capita is \$38,465. The population 18 to 64 represents 62.7 percent, while the age 65 and older population is 18.0 percent of the total. The high school graduation rate is 93.0 percent; 27.4 percent have an Associate Degree of higher and 22.9 percent have a Bachelor Degree or higher.

Dyer County has five small towns: Dresden (pop. 2,940), Gleason (pop. 1,464), Greenfield (pop. 2,336), Martin (pop. 10,635), and Sharon (pop. 1,067).

The county has one institution of higher education: University of Tennessee at Martin that employs 1,100 and has 6,705 students.

Weakley County has a several major employers that employ individuals living in and around the county. Government, advanced manufacturing and health care are major industries. Key companies are Mtd Products, Inc. a producer of outdoor power equipment (1,200 employees), Wal-Mart Stores, Inc (258 employees), Martin health (230 employees), Champion Home Builders (220 employee), Schwarz Supply Source (171 employees), and West Tennessee Healthcare Rehabilitation Hospital (118 employees).

Other top employers are Weakley County Board of Education with 673 employees, and 4,163 students. The county seat of Weakley County is Dresden, Tennessee. Weakley County Government employs 666 people), The City of Martin employs 150 people.

### **Description of Community Health Needs Assessment Update Process**

The mission of the Community Health Needs Assessment is to evaluate and improve the health status and wellbeing of residents in Weakley County, Tennessee with an emphasis on preventive measures. The community health needs assessment was a review of survey results and secondary data identifying state and regional health data.

The Community Health Needs Assessment had ten (10) organizational goals.

1. To form alliances between West Tennessee Healthcare Volunteer Hospital, non-profit organizations, and the community at large to assess, improve, and promote the community health of Weakley County, Tennessee.
2. To identify internal resources already available to assist in improving community health.
3. To assist in identifying available community resources.
4. To define “health” as it pertains to Weakley County, Tennessee.
5. To identify collaborative partners.
6. To educate and gain formal support of West Tennessee Healthcare leadership team, Board of Trustees, community leaders, and others.
7. To assist in establishing baseline health status assessment of Weakley County by collecting and reviewing available secondary data and statistics from resident surveys.
8. To assist in determining standards against which to measure current and future health status of the community.
9. To assist in communitywide establishment of health priorities and in facilitating collaborative planning, actions, and direction to improve community health status and quality of life.
10. To promote the need for ongoing evaluation of the community health assessment process to learn results, establish new goals and encourage further community action and involvement.

The first stage of the Update process involved gathering secondary data from multiple sources including the Tennessee Department of Health, County Health Rankings and Roadmaps, Tennessee Department of Economic & Community Development, Tennessee Department of Mental Health and Substance Abuse Services, Tennessee Bureau of Investigation, Centers of Disease Control and Prevention, Tennessee Behavioral Health County and Region Services Data Book, Tennessee Department of Health. Behavioral Risk Factor Surveillance System, and Traumatic Brain Injury Program. These data are presented in **Attachment A**.

The second step in the Community Health Needs Assessment Update process consisted of creating a survey to collect data from residents on local health issues. The survey consisted of 49 questions that asked basic demographics of age, race, education level, insurance, county of residence, presence or absence of specific health issues, access to care, physical activity, health information, and ten questions on adverse childhood experiences prior to 18<sup>th</sup> birthday.

Respondents were requested to answer a simple “yes” or “no” to specific health issues and adverse childhood experiences. **Attachment B** has a summary of secondary data.

The survey instrument was distributed by hand during community wide COVID-19 vaccination clinics at Lane College and Humboldt Medical Center on March 20, 2021; and Jackson-Madison County General Hospital on March 30, 2021. Data from 1,895 completed surveys was collected. **Attachment C** contains a copy of the survey instrument, and **Attachment D** has a copy of the survey results.

An internal committee of West Tennessee Healthcare staff were identified to participate in the update process.

Vicki Lake	Department of Community Development
Rose Bailey	Department of Diversity, Health Equity, and Operational Excellence
Ruby Kirby	WTH Bolivar Hospital and WTH Camden Hospital
Joyce Noles	Emergency Services
Deena Kail	West Tennessee Women’s Center, Ayers Children’s Medical Center
Gina Myracle	Alice and Carl Kirkland Cancer Center
Melissa Walls	Virtual Care
Frank McMeen	West Tennessee Healthcare Foundation
Anna Tetleton Burns	Primary Care Clinics
Miki Martin	LIFT

LeAnn Childress	LIFT Therapy
Pam Henson	Pathways Behavioral Health Services
Betty Haskins	WTH Camden Hospital
Scott Barber	WTH Dyersburg Hospital
Sherry Scruggs	WTH Milan Hospital
Kevin Decker	WTH Volunteer Hospital
Tina Prescott	Administration
Vanessa Patrick	Administration

### Results of Survey (N=1,895)

Health prevalence was identified by the percentage of respondents indicating they had experienced a specific medical issue. Figure 1 contains the ranking according to prevalence among respondents.

Figure 1: Health Issue Prevalence

Allergies	46%	Lack of financial resources: dental care	15%
High Blood Pressure	42%	Lack of financial resources: medical care	10%
Arthritis	33%	Lack of financial resources: medications	10%
Stress	31%	Lack of transportation: medications:	5%
Chronic Pain	18%	Lack of transportation: dental care	4%
Diabetes	18%	Lack of transportation: medical care	4%
Eye Conditions	14%		
Asthma	12%	No access to adult or child care	32%
Hearing Loss	11%	No access to physical activity facilities	16%
Heart Conditions	11%	No access to healthy foods	14%
Bullying	10%		
Autoimmune Disease	8%	Family history of heart failure	81%
Fall Injuries	8%	Family history of suicide	10%
Osteoporosis	5%	Family history of opioid use	9%
COPD	4%		
Stroke	3%	COVID-19 Vaccination Experienced	91%
Dementia/Alzheimers	1%	COVID-19	46%

### Survey Respondent Demographics

Surveys were distributed at several locations, and data were requested on basic respondent demographics. The age group 51 to 64 represented 43 percent of respondents, followed by age 36 to 50 (22 percent), and age 65 and older (18 percent) (Figure 2). The predominant education level is respondents with a Bachelors degree (28 percent), followed by high school graduate/GED (22 percent) and some college (21 percent) (Figure 3). Sixty percent (60 percent) of respondents were working full time and 20 percent were retired (Figure 4). A majority of individuals completing the survey were women (56 percent) (Figure 5), had private health insurance (59 percent) (Figure 6), and were Caucasian (68 percent) (Figure 7).

Figure 2: Age Distribution

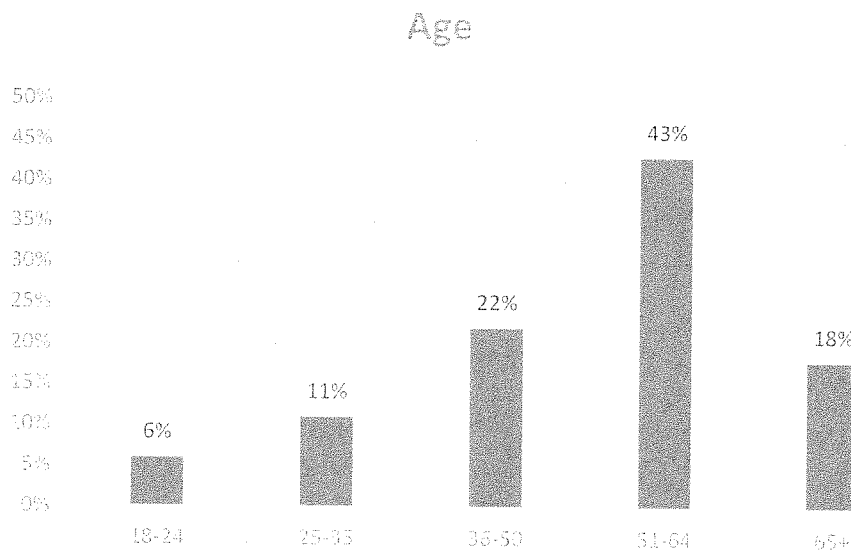




Figure 3: Education Levels

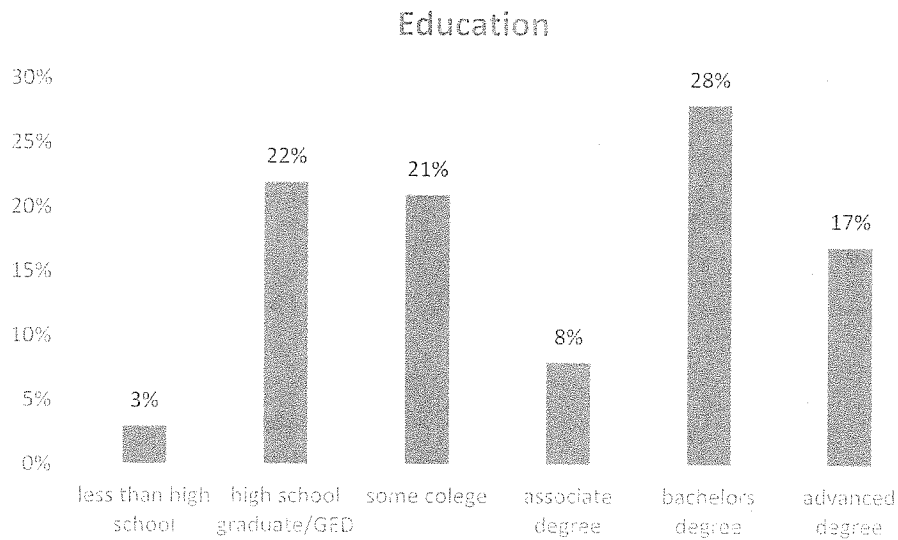


Figure 4: Employment Status

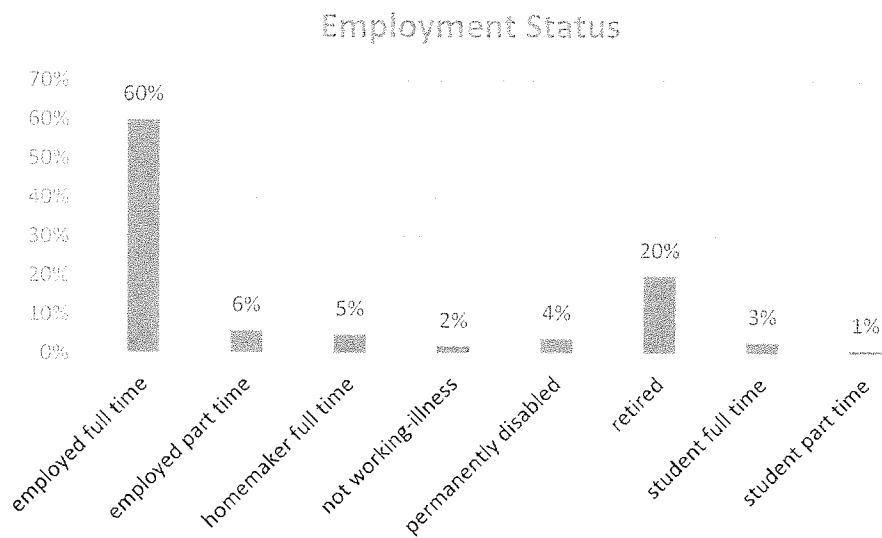


Figure 5: Gender

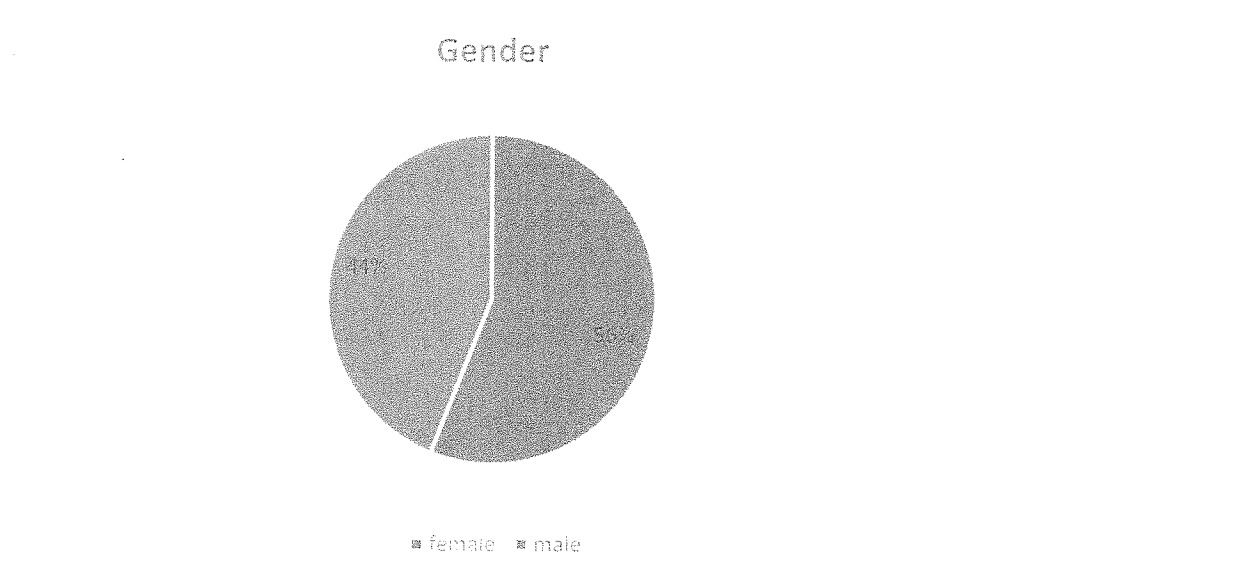


Figure 6: Insurance Coverage

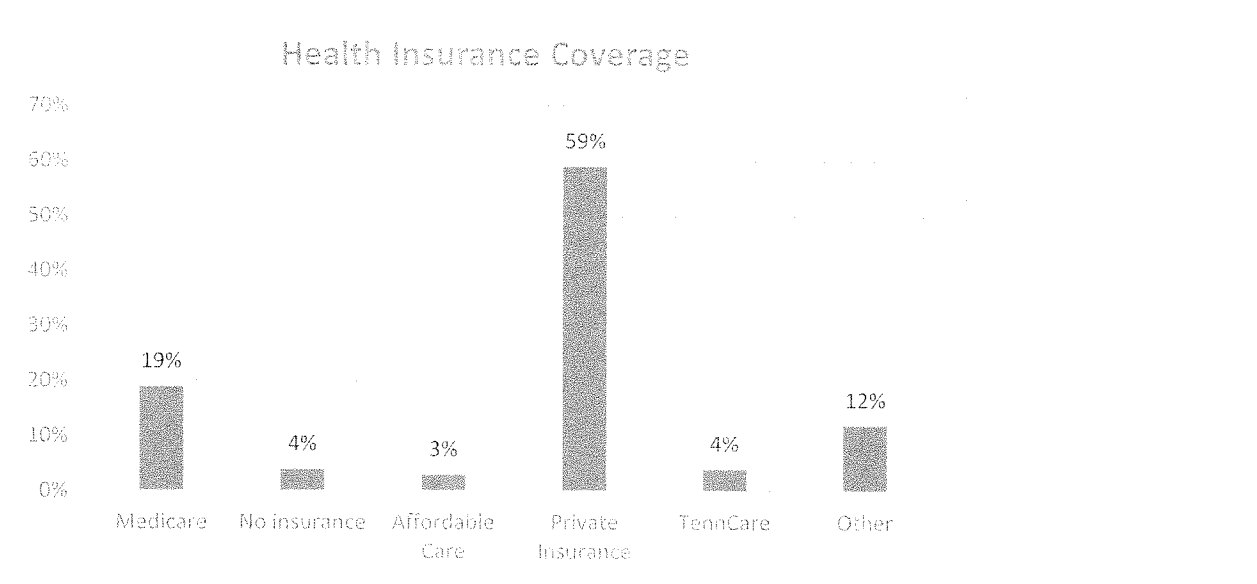
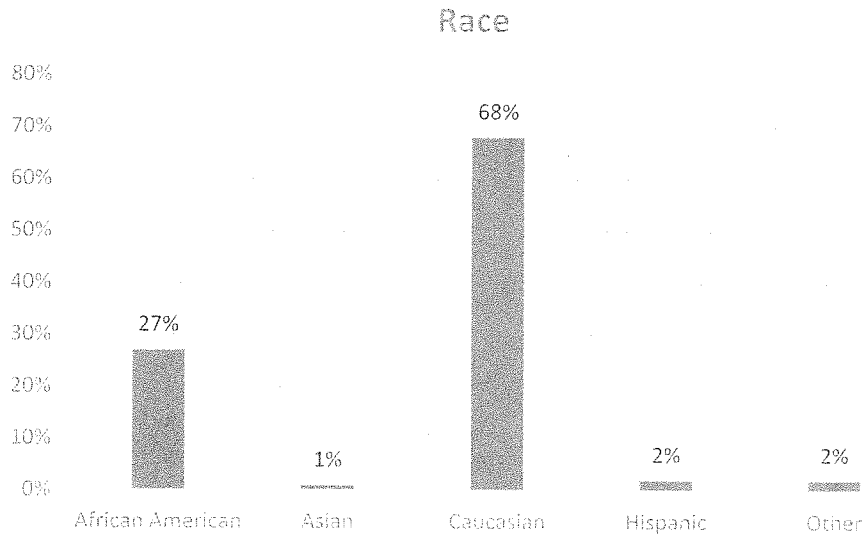


Figure 7: Race



### Results of Secondary Data Analysis

The West Tennessee Healthcare Committee reviewed secondary data, focusing on indicators where the county consistently had higher rates, percentages, volumes than the state as a whole. For Weakley County, deaths from cancer, obesity, deaths from diabetes, and drug related issues were consistently higher than the State of Tennessee as a whole.

Table 1: Deaths from Diseases of the Cancer Per 100,000

Deaths from Malignant Neoplasms Per 100,000							
	Total	Weakley			Total	TN	
		White	Black			White	Black
2018	215.5	228.6	*		208.8	226.9	170.7
2017	243.0	259.2	*		212.8	230.6	173.1
2016	262.7	285.2	*		217.5	235.1	178.0
2015	229.7	238.6	*		214.8	229.5	170.4

2014	192.0	206.3	*	216.1	231.8	182.4
------	-------	-------	---	-------	-------	-------

Source: Tennessee Department of Health.

Table 2: Death from Diseases from the Heart per 100,000

Death from Diseases of the Heart Per 100,000						
Rate						
	Total	Weakley White	Black	Total	TN White	Black
2018	251.4	265.6	*	242.5	263.2	199.7
2017	222.0	239.0	*	238.4	259.5	193.8
2016	235.8	255.0	*	232.1	249.9	196.8
2015	297.4	301.5	*	237.5	252.8	190.1
2014	279.3	294.8	*	232.0	250.8	189.3

Source: Tennessee Department of Health

Table 3: Obesity

Percent of Adults with Body Mass index greater than 25-overweight or obese

	Weakley County	TN
2020	39	33
2019	35	33
2018	34	32
2017	31	32
2016	31	32

Source: County Health Rankings and Roadmaps

Table 4: Deaths from Diabetes

Deaths from Diabetes per 100,000						
	Total	Weakley White	Black	Total	TN White	Black
2018	62.8	63.9	*	29.9	29.4	38.0
2017	57.0	53.9	*	28.5	28.1	36.1

2016	56.7	53.7	*	28.4	27.5	37.3
2015	55.9	56.3	*	27.1	26.6	32.8
2014	52.4	52.4	*	26.3	25.8	33.5

Source: Tennessee Department of Health.

Table 5: Drug Related Issues

**Excessive Drinking**

**Percent Adults reporting heavy or binge drinking**

	Weakley County	TN
2020	14	14
2019	14	14
2018	14	14
2017	13	11
2016	12	12
2017	13	11
2016	12	12
2015	8	9
2014	8	9
2013	10	10
2012	9	9
2011	10	9

Source: County Health Rankings and Roadmaps

**Number of Drug Related Arrests for Adults over 18 in Weakley County**

2019	411
2018	330

Source: Tennessee Bureau of Investigation.

**Rate of Opioid Prescriptions-Number Per 1,000 persons**

	Weakley	TN	US
2018	1146.0	901.1	587.0
2017	1275.2		
2016	1357.2		
2015	1356.7		

2014 1400.0

Source: Informatics & Analytics Centers for Disease Control & Prevention.

---

In addition to these issues COVID-19 data for Weakley County was reviewed as of August 23, 2021. Weakley County has experienced 4,717 positive cases. Of this figure, 86 have been hospitalized, 70 individuals have died, and 4,369 have recovered.

### **Priority Health Issues**

Upon a review of survey responses and secondary data, four priority health issues were identified.

COVID-19

Chronic Health Conditions

Obesity

Mental Health and Substance Abuse Issues

### **Conclusion**

The Weakley County Community Health Needs Assessment was presented to the West Tennessee Healthcare Quality Council on Tuesday September 21, 2021. The document was approved for submission to the West Tennessee Healthcare Board of Trustees and approved on October 26, 2021.

The Hospital Committee will reconvene in 2022 to collaborate with the Tennessee Department of Health County Health Council and will update this report with identified strategies.

This report is submitted as required in the Patient Protection and Affordable Care Act Pub.L.NO.111-148, 124 Stat. 119, enacted March 23, 2010, requiring updating every three years.

**Weakley County Community Health Assessment**  
**Update of Size of Health Issues 2021-Update 2-2021**  
**Prioritization of Health Issues**

Population	33,328
Age 65 +	19.0
Caucasian	88.9
African American	7.7
Latino	2.9
High School Graduates	85.1
B.S. Degree or Higher	21.6
Disability< Age 65	14.1
Median HH Income	\$ 39,937
PerCapita Income	\$ 22,755

### Allergies

- \*1 in 5 Americans suffer from all types of allergies.
- \*Allergies are increasing. They affect up to 30% of adults and 40% of children
- \*Allergies are the 6th leading cause of chronic illness in the U.S.
- \*10% of U.S. Children have respiratory allergies
- \*Up to 10% of people report being allergic to penicillin
- \*People visit the emergency room 200,000 times each year because of food allergies
- \*8.8 million children in the U.S> have skin allergies.

Source: Better Tennessee Health Brief, 2018

### Asthma

- \*Number of adults aged 18 and over who currently have asthma: 19.2 million
  - \*Percent of adults aged 18 and over who currently have asthma: 7.7%
  - \*Number of children under age 18 years who currently have asthma: 5.5 million
  - \*Percent of children under age 18 years who currently have asthma: 7.5%
  - \*Number of physician office visits with asthma as a primary diagnosis: 9.8 million
  - \*Number of emergency department visits with asthma as a primary diagnosis: 1.6 million
  - \*Number of deaths: 3,524
  - \*Deaths per 100,000 population: 1.1
- 
- \*Asthma is a chronic inflammation of the lung airways that causes coughing, chest tightness, wheezing or shortness of breath
  - \*8.3% of Americans have asthma. Of these 26.5 million, 20.4 million are adults and 6.1 million are children
  - \*Asthma prevalence is higher in children (9.4 percent) than in adults (7.7 percent), and higher in females (9.2 percent) than males (7.0 percent)
  - \*Patients with asthma reported 11 million visits to a doctor's office and 1.7 million visits to hospital outpatient departments
  - \*Asthma results in 439,000 hospitalizations and 1.3 million emergency room visits annually.
  - \*Asthma is the most common chronic illness in childhood, accounting for 13.8 million missed school days each year. It also accounts for 14.2 million lost work days for adults.
  - \*The estimated economic cost of asthma is \$56 billion annually.
  - \*More than 3,500 people die of asthma each year, nearly half of whom are age 65 or older
  - \*Asthma symptoms can be triggered by exposure to an allergen
  - \*Asthma is often hereditary.

\*Weather conditions such as extremely dry, wet or windy weather can worsen asthma conditions

Source: Centers for Disease Control and Prevention.

## Cancer

### Deaths from Malignant Neoplasms Per 100,000

	Weakley				TN		
	Total	White	Black		Total	White	Black
2018	215.5	228.6	*		208.8	226.9	170.7
2017	243.0	259.2	*		212.8	230.6	173.1
2016	262.7	285.2	*		217.5	235.1	178.0
2015	229.7	238.6	*		214.8	229.5	170.4
2014	192.0	206.3	*		216.1	231.8	182.4

Source: Tennessee Department of Health.

## COPD, Emphysema, or Chronic Bronchitis

About 9.7 percent of Tennessee population have COPD.

Respondents were more likely to report COPD ( $p < 0.05$ ) if they

- Were female.
- Were unable to work.
- Had not graduated from high school.
- Had a household income of \$25,000 or less.
- Had a history of smoking (current or former).
- Had a history of asthma.

Respondents were less likely to report COPD ( $p < 0.05$ ) if they

- Were aged 44 years or younger.
- Were male.
- Had never smoked.
- Had no history of asthma.

Source: COPD Foundation; Centers for Disease Prevention and Control

## Dementia/Alzheimers Disease

### Impact of Alzheimer's

Alzheimer's disease has an impact on just about everyone.

110,000 Tennesseans

5.4 Million Americans

43 Million people in the world have Alzheimer's.

Alzheimer's disease is the 6th leading cause of death in the United States.

Alzheimer's disease is the most expensive illness in the United States.

In 2016, the cost to the United States was **\$236 Billion**.

Medicare and Medicaid pay **\$160 Billion** (68%) of health care cost for those with Alzheimer's disease and other dementias

The average family caring for a loved with Alzheimer's will spend **\$215,000** throughout the course of the disease (\$40,000 for direct costs; \$175,000 for indirect costs).

In 2050, Alzheimer's disease is projected to cost more than **\$1 trillion dollars!**



Source: Centers for Disease Control and Prevention.

## Diabetes

### Deaths from Diabetes per 100,000

	Total	Weakley White	Black	*	Total	TN White	Black
2018	62.8	63.9		*	29.9	29.4	38.0
2017	57.0	53.9		*	28.5	28.1	36.1
2016	56.7	53.7		*	28.4	27.5	37.3
2015	55.9	56.3		*	27.1	26.6	32.8
2014	52.4	52.4		*	26.3	25.8	33.5

Source: Tennessee Department of Health.

### Percentage of Population Diagnosed with Diabetes

	Weakley County	TN
2020	11	13
2019	12	13
2018	12	13
2017	15	13
2016	11	12

Source: County Health Rankings and Roadmaps.

## Dental Care

Tennessee ranks 38th for dental care. Oral cancer from tobacco use accounts for 75 to 90 percent of oral cancer. About 22 percent of adults and 10 percent of children smoke in Tennessee.

People do not visit a dentist because of cost (70%) and fear (25%).

Weakley County is a federal Health Professional Shortage Area for dental care.  
ID 647775716 low income and single county score 19 rural

## Financial Resources

### Individuals in Poverty-Percent

Weakley County 17.7

### Uninsured Adults-Percent Population Under Age 65 without health insurance

	Weakley County	TN
2020	10	11
2019	10	11
2018	13	15
2017	16	17
2016	19	20

Source: County Health Rankings and Roadmaps

#### Unemployment

	Weakley County	TN
Nov-20	4.7	5.3
Nov-19	3.4	3.3
2018	6.1	4.8
2017	7.0	5.8
2016	8.6	6.7

Source: Tennessee Department of Labor and Workforce Development

#### Heart Disease

##### Death from Diseases of the Heart Per 100,000

Rate

	Total	Weakley White	Black	Total	TN White	Black
2018	251.4	265.6	*	242.5	263.2	199.7
2017	222.0	239.0	*	238.4	259.5	193.8
2016	235.8	255.0	*	232.1	249.9	196.8
2015	297.4	301.5	*	237.5	252.8	190.1
2014	279.3	294.8	*	232.0	250.8	189.3

Source: Tennessee Department of Health

#### High Blood Pressure

##### Deaths from Cerebrovascular Disease per 100,000

RATE

	Total	Weakley White	Black		Total	TN White	Black
2018	50.9	57.1	*		51.7	54.5	49.9
2017	57.0	53.9	*		52.4	55.2	50.1
2016	44.8	43.6	*		52.8	55.1	52.6
2015	64.8	69.6	*		52.2	53.9	49.8
2014	69.8	68.8	*		50.7	53.1	48.4

Source: Tennessee Department of Health

#### Influenza in rural West Tennessee

##### Influenza in rural West Tennessee

Flue Vaccine Rate: Elderly

	Weakley	TN	US
2018	43.0%	47.37%	45.99%
2017	43.1%		
2016	55.0%		
2015	57.0%		
2014	57.4%		

Source: US Department of Health & Human Services

## Mental Illness

- \*Mental Illness affects 1 in 5 adults in the United States
- \*Any mental illness affects 20.6 percent of Americans.
- \*Any mental illness higher in women (24.5%) than men(16.3%)
- \* Young adults ages 18-25 had highest prevalence of mental illness (29.4%)
- \*In 2019 23 million or 44.8% adults received mental health services
- \* More females with any mental illness (49.7%) receive services than males (36.8%)
- \* In 2019 there were an estimated 13.1 million adults with serious mental illness.

Source: National Institute of Mental Health.

## Average Number of Mentally Unhealthy Days Reported in Last 30 Days

	Weakley County	TN
2020	4.9	4.4
2019	4.8	4.5
2018	4.5	4.5
2017	4.4	4.4
2016	4.8	4.9

Source: County Health Rankings and Roadmaps

## Frequent mental distress 2014-2016-14 percent

## Obesity

### Percent of Adults with Body Mass index greater than 25-overweight or obese

	Weakley County	TN
2020	39	33
2019	35	33
2018	34	32
2017	31	32
2016	31	32

Source: County Health Rankings and Roadmaps

### Youth Obesity

	Weakley	TN
2017	44.5%	
2016	44.6%	39.2%
2015	46.9%	
2014	47.2%	

Source: Coordinated School Health.

## Physical Activity

Weakley	TN	US
---------	----	----

2018	75.4%
2017	69.4%
2016	69.3%
2015	68.0%
2014	64.0%

Source: Behavioral Risk Survey. Percentage of adults reporting physical activity-past 30 da

#### Sexually Transmitted Diseases Ages 15-17 per 1,000

	Dyer County	TN
2020	7.8	19.0
2019	8.6	17.3
2017	10.2	16.0
2016	7.4	15.2

Source: Tennessee Commission on Children and Youth. KIDS COUNT.

#### Substance Abuse

##### Excessive Drinking

##### Percent Adults reporting heavy or binge drinking

	Weakley County	TN
2020	14	14
2019	14	14
2018	14	14
2017	13	11
2016	12	12
2017	13	11
2016	12	12
2015	8	9
2014	8	9
2013	10	10
2012	9	9
2011	10	9

Source: County Health Rankings and Roadmaps

##### Number of Drug Related Arrests for Adults over 18 in Weakley County

2019	411
2018	330

Source: Tennessee Bureau of Investigation.

##### Rate of Opioid Prescriptions-Number Per 1,000 persons

	Weakley	TN	US
2018	1146.0	901.1	587.0
2017	1275.2		
2016	1357.2		

2015	1356.7
2014	1400.0

Source: Informatics & Analytics Centers for Disease Control & Prevention.

### Teenage Pregnancy

#### Pregnancies Age 10-17 Per 1,000 Females

	Weakley				Tennessee		
	Total	White	Black		Total	White	Black
2018	4.4	4.3	7.4		4.6	3.7	8.8
2017	1.9	2.2	0		4.9	4.1	8.7
2016	2.4	2.8	0.0		5.4	4.5	9.7
2015	2.4	0.7	12.3		6.0	5.1	10.2
2014	5.7	6.0	5.4		6.3	5.5	10.7

#### Pregnancies Age 15-17 Per 1,000 Females

	Weakley				Tennessee		
	Total	White	Black		Total	White	Black
2018	9.5	9.6	0.0		11.6	9.5	21.6
2017	4.1	4.8	0.0		12.4	10.5	21.4
2016	3.9	4.6	0.0		13.7	11.5	23.6
2015	5.2	1.6	0.0		15.2	13.2	24.7
2014	12.4	13.4	9.7		16.1	14.2	25.6

Source: Tennessee Department of Health.

Summary of Health Issues-2021 Community Health Needs Assessment Secondary Data

X= Indicator Higher for the County than the State of Tennessee

County	Cancer Deaths	Heart Disease	Children in Poverty	Uninsured Population	Persons in Poverty	Obesity	Teen Pregnancy	Tobacco Use	Cerebrovascular Deaths	Diabetes Deaths	Excessive Drinking	Teen Pregnancy	Drug-Related Issues	Diabetes Diagnosed	Motor Vehicle Accidents
Benton	X	X	X	X		X		X	X	X		X			
Chester		X			X	X				X			X	X	
Crockett	X	X		X	X	X		X		X		X	X		X
Gibson	X	X				X				X			X		
Hardeman	X	X	X	X		X		X	X	X			X	X	
Haywood	X	X	X			X			X	X			X	X	X
Madison		X	X			X			X	X			X		
Dyer	X	X				X				X		X	X	X	
Weakley	X					X				X			X		



# Community Health Assessment Survey

## West Tennessee Healthcare



We would like you to help us identify current health and well being issues facing rural West Tennessee counties. Your responses will be confidential. This survey will take between 3-5 minutes.

Please answer the following questions by selecting the response that best describes you. Darken or fill in the circle for each response.

1. Age

- ☐ 18-24      ☐ 25-35      ☐ 36-50      ☐ 51-64      ☐ 65+

2. Education

- ☐ Less than high school      ☐ High school graduate/GED      ☐ Some college  
☐ Associate degree      ☐ Bachelor degree      ☐ Advanced degree

3. Employment Status

- ☐ Employed full time      ☐ Employed part time  
☐ Homemaker full time      ☐ Not working because of acute illness or injury  
☐ Permanently disabled      ☐ Retired  
☐ Student full time      ☐ Student part time

4. Gender

- ☐ Female  
☐ Male  
☐ Trans Female (Male to Female)  
☐ Trans Male (Female to Male)  
☐ Gender Non-conforming (i.e. not exclusively male or female)

5. Insurance

- ☐ Medicare      ☐ No insurance  
☐ Obamacare (Affordable Healthcare)      ☐ Private insurance  
☐ TennCare      ☐ Other

6. County of Residence

- |                                  |                                |                                 |                               |                              |
|----------------------------------|--------------------------------|---------------------------------|-------------------------------|------------------------------|
| <input type="radio"/> Benton     | <input type="radio"/> Chester  | <input type="radio"/> Crockett  | <input type="radio"/> Dyer    | <input type="radio"/> Gibson |
| <input type="radio"/> Hardeman   | <input type="radio"/> Haywood  | <input type="radio"/> Madison   | <input type="radio"/> Weakley | <input type="radio"/> Benton |
| <input type="radio"/> Carroll    | <input type="radio"/> Chester  | <input type="radio"/> Crockett  | <input type="radio"/> Decatur | <input type="radio"/> Dyer   |
| <input type="radio"/> Gibson     | <input type="radio"/> Hardeman | <input type="radio"/> Hardin    | <input type="radio"/> Haywood | <input type="radio"/> Henry  |
| <input type="radio"/> Lauderdale | <input type="radio"/> Madison  | <input type="radio"/> McNairy   | <input type="radio"/> Obion   | <input type="radio"/> Shelby |
| <input type="radio"/> Weakley    | <input type="radio"/> Lake     | <input type="radio"/> Henderson |                               |                              |



# Community Health Assessment Survey

## West Tennessee Healthcare

### 7. Race

- |  |   |
|--|---|
| <input type="radio"/> African/American | <input type="radio"/> American Indian/Alaskan Native            |
| <input type="radio"/> Asian            | <input type="radio"/> Caucasian                                 |
| <input type="radio"/> Hispanic/Latino  | <input type="radio"/> Indian (from India or parents from India) |
| <input type="radio"/> Middle Eastern   | <input type="radio"/> Pacific Islander/Polynesian               |
| <input type="radio"/> Other            | <input type="radio"/> Not sure                                  |

### 8. Weight

- ☐ Just right   
 ☐ Obese   
 ☐ Overweight   
 ☐ Underweight

**For the following questions, indicate if you have experienced the health issue by selecting Yes or No.**

Response Definition: Y=Yes N=No

	Y	N
9. Have you had (or do you currently have) <b>Allergies?</b>	<input type="radio"/>	<input type="radio"/>
10. Have you had (or do you currently have) <b>Arthritis?</b>	<input type="radio"/>	<input type="radio"/>
11. Have you had (or do you currently have) <b>Asthma?</b>	<input type="radio"/>	<input type="radio"/>
12. Have you had (or do you currently have) an <b>Autoimmune disease?</b>	<input type="radio"/>	<input type="radio"/>
13. Have you had (or do you currently experiencing) <b>Bullying?</b>	<input type="radio"/>	<input type="radio"/>
14. Have you had (or do you currently have) <b>Chronic Pain?</b>	<input type="radio"/>	<input type="radio"/>
15. Have you had (or do you currently have) <b>Dementia/Alzheimer's?</b>	<input type="radio"/>	<input type="radio"/>
16. Have you had (or do you currently have) <b>Diabetes?</b>	<input type="radio"/>	<input type="radio"/>
17. Have you had (or do you currently have) <b>Emphysema/COPD?</b>	<input type="radio"/>	<input type="radio"/>
18. Have you had (or do you currently have) an <b>Eye Condition (cataracts, glaucoma, masclar degeneration)?</b>	<input type="radio"/>	<input type="radio"/>
19. Have you had (or do you currently have) a <b>Fall or Fall related injury?</b>	<input type="radio"/>	<input type="radio"/>
20. Have you had (or do you currently have) <b>Hearing Loss/Deafness?</b>	<input type="radio"/>	<input type="radio"/>
21. Have you had (or do you currently have) <b>High Blood Pressure?</b>	<input type="radio"/>	<input type="radio"/>
22. Have you had (or do you currently have) <b>Osteoporosis?</b>	<input type="radio"/>	<input type="radio"/>
23. Have you had (or do you currently have) a <b>Heart Condition?</b>	<input type="radio"/>	<input type="radio"/>
24. Have you had (or do you currently have) high levels of <b>Stress?</b>	<input type="radio"/>	<input type="radio"/>
25. Have you had a <b>Stroke?</b>	<input type="radio"/>	<input type="radio"/>

**Have you experienced a lack of financial resources that led to problems accessing any of the following:**

	Y	N
26. Dental care	<input type="radio"/>	<input type="radio"/>
27. Medical care	<input type="radio"/>	<input type="radio"/>
28. Medications	<input type="radio"/>	<input type="radio"/>



# Community Health Assessment Survey

## West Tennessee Healthcare

Have you experienced a lack of transportation that led to problems accessing any of the following

- |   | Y                     | N                     |
|---|-----------------------|-----------------------|
| 29. Dental care   | <input type="radio"/> | <input type="radio"/> |
| 30. Medical care  | <input type="radio"/> | <input type="radio"/> |
| 31. Medications   | <input type="radio"/> | <input type="radio"/> |
| 32. Do you have access to <b>Healthy Foods</b> (fresh fruits & vegetables, lean meats, whole grain products, low fat milk products) | <input type="radio"/> | <input type="radio"/> |
| 33. How far must you travel to access <b>Healthy Foods</b> listed above?  |                       |                       |
| <input type="radio"/> less than one mile  | <input type="radio"/> | <input type="radio"/> |
| <input type="radio"/> over one mile to three miles  | <input type="radio"/> | <input type="radio"/> |
| <input type="radio"/> over three miles to five miles  | <input type="radio"/> | <input type="radio"/> |
| <input type="radio"/> over five miles to ten miles  | <input type="radio"/> | <input type="radio"/> |
| <input type="radio"/> over ten miles  |                       |                       |
| 34. Do you have access to <b>Information/Education</b> about your health issues, if any?  | <input type="radio"/> | <input type="radio"/> |
| 35. Do you have access to <b>Child or Adult Care</b> ?  | <input type="radio"/> | <input type="radio"/> |
| 36. Do you have access to facilities or places for <b>Physical Activity</b> ?   | <input type="radio"/> | <input type="radio"/> |
| 37. Do you have a family history of:  |                       |                       |
| <input type="radio"/> suicide   | <input type="radio"/> | <input type="radio"/> |
| <input type="radio"/> heart failure   | <input type="radio"/> | <input type="radio"/> |
| <input type="radio"/> opioid use  | <input type="radio"/> | <input type="radio"/> |
| 38. Have you or family member had the COVID-19 vaccine?   | <input type="radio"/> | <input type="radio"/> |
| 39. Have you or family member had COVID-19?   | <input type="radio"/> | <input type="radio"/> |

The following questions ask about difficult situations that may cause you to feel upset..if so please talk with someone you consider safe or contact a health professional or counselor.

**Prior to your 18th birthday, did you experience and of the following?**

- |   | Y                     | N                     |
|---|-----------------------|-----------------------|
| 40. Did a parent or other adult in the household often swear at you, insult you, put you down or humiliate you? OR act in a way that made you afraid that you might be physically harmed?             | <input type="radio"/> | <input type="radio"/> |
| 41. Did an adult or person at least 5 years older than you ever touch or fondle you or have you touch their body in a sexual way? OR try to have oral, anal, or vaginal sex with you?                 | <input type="radio"/> | <input type="radio"/> |
| 42. Did you often feel that no one in your family loved you or thought you were important or special? OR Your family didn't look out for each other, feel close to each other, or support each other? | <input type="radio"/> | <input type="radio"/> |
| 43. Did a parent or other adult in the household often push, grab, slap, or throw something at you? OR ever hit you so hard that you had marks or were injured?                                       | <input type="radio"/> | <input type="radio"/> |
| 44. Were your parents ever separated or divorced?   | <input type="radio"/> | <input type="radio"/> |



# Community Health Assessment Survey

## West Tennessee Healthcare



45. Was your mother or stepmother often pushed, grabbed, slapped or had something thrown at her? OR sometimes or often kicked, bitten, hit with a fist, or hit with something hard? OR ever repeatedly hit or at least a few minutes or threatened with a gun or knife? Y   N  
☐ ☐
46. Did you live with anyone who was a problem drinker or alcoholic or used street drugs? ☐ ☐
47. Was a household member depressed or mentally ill or did a household member ever attempt suicide? ☐ ☐
48. Did a household member ever go to prison? ☐ ☐
49. Did you often feel that you didn't have enough to eat, had to wear dirty clothes, or had no one to protect you? OR your parents were too drunk or high to take care of you or take you to the doctor if you needed it? ☐ ☐



# Community Needs Assessment Results

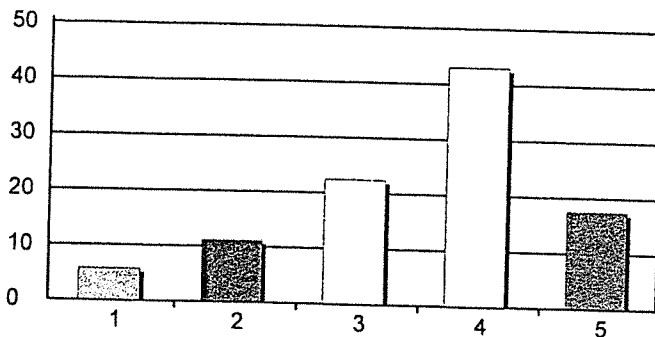
## May 2, 2021

Creation Date: 5/2/2021

Time Interval: 3/28/2021 to 5/2/2021

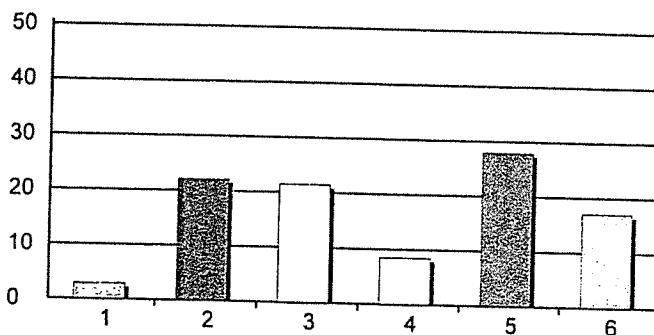
Total Respondents: 1895

### 1. Age



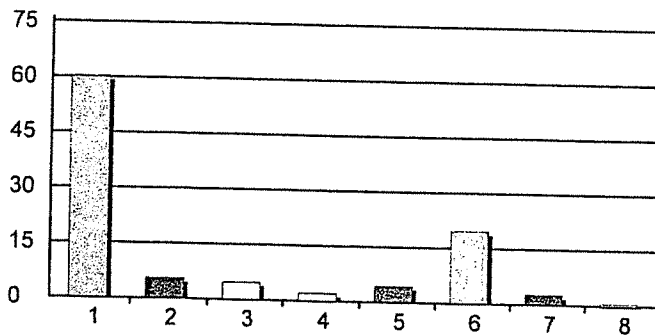
1. 18-24 109 6%  
 2. 25-35 211 11%  
 3. 36-50 423 22%  
 4. 51-64 811 43%  
 5. 65+ 331 18%  
 Total Responses: 1885  
 Mean: 3.55 Standard Deviation: 1.08

### 2. Education



1. Less than high school 53 3%  
 2. High school graduate/GED 409 22%  
 3. Some college 396 21%  
 4. Associate degree 156 8%  
 5. Bachelor degree 516 28%  
 6. Advanced degree 316 17%  
 Total Responses: 1846

### 3. Employment Status

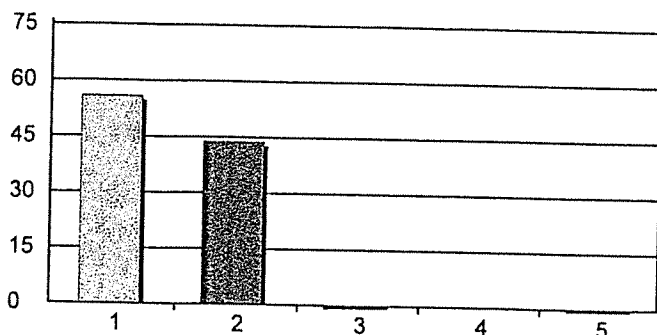


1. Employed full time 1090 60%  
 2. Employed part time 101 6%  
 3. Homemaker full time 84 5%  
 4. Not working because of acute illness or injury 38 2%  
 5. Permanently disabled 80 4%  
 6. Retired 357 20%  
 7. Student full time 51 3%  
 8. Student part time 10 1%  
 Total Responses: 1811

# Community Needs Assessment Results

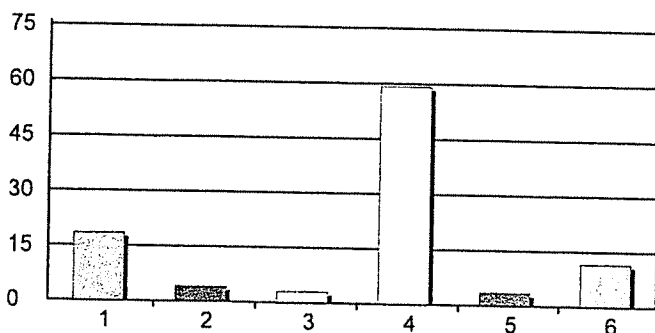
## May 2, 2021

### 4. Gender



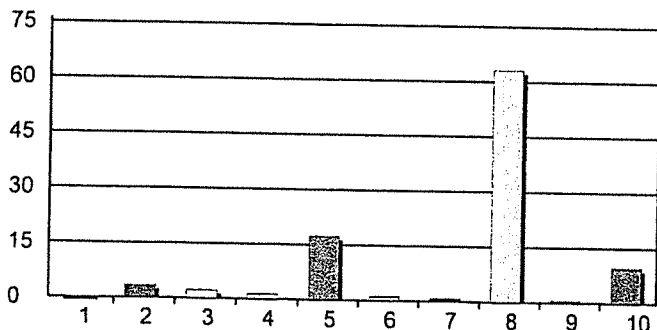
1. Female	1048	56%
2. Male	821	44%
3. Trans Female (Male to Female)	2	0%
4. Trans Male (Female to Male)	0	0%
5. Gender Non-conforming (i.e. not exclusively m...	4	0%
Total Responses:	1875	
Mean: 1.45	Standard Deviation: 0.52	

### 5. Insurance



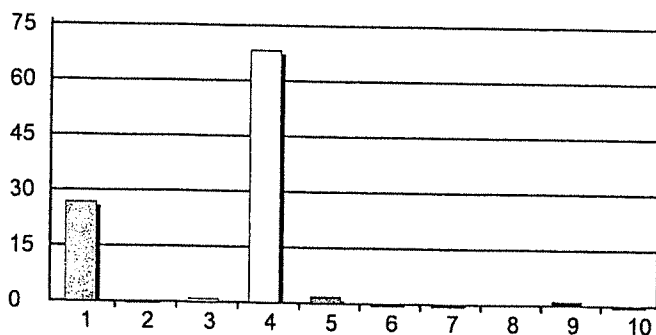
1. Medicare	338	19%
2. No insurance	75	4%
3. Obamacare (Affordable Healthcare)	54	3%
4. Private insurance	1081	59%
5. TennCare	65	4%
6. Other	213	12%
Total Responses:	1826	

### 6. County of Residence



1. Benton	2	0%
2. Chester	64	3%
3. Crockett	42	2%
4. Dyer	25	1%
5. Gibson	328	17%
6. Hardeman	22	1%
7. Haywood	17	1%
8. Madison	1192	63%
9. Weakley	13	1%
10. Other	183	10%
Total Responses:	1888	
Mean: 7.27	Standard Deviation: 1.88	

### 7. Race

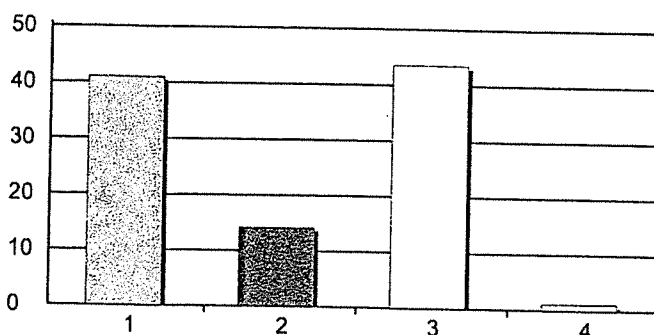


1. African/American	490	27%
2. American Indian/Alaskan Native	7	0%
3. Asian	16	1%
4. Caucasian	1248	68%
5. Hispanic/Latino	33	2%
6. Indian (from India or parents from India)	4	0%
7. Middle Eastern	4	0%
8. Pacific Islander/Polynesian	0	0%
9. Other	23	1%
10. Not sure	5	0%
Total Responses:	1830	

# Community Needs Assessment Results

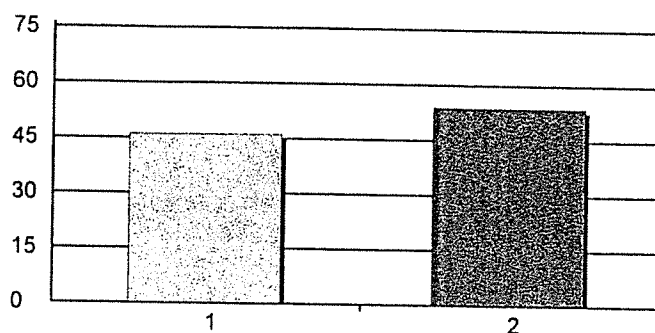
## May 2, 2021

### 8. Weight



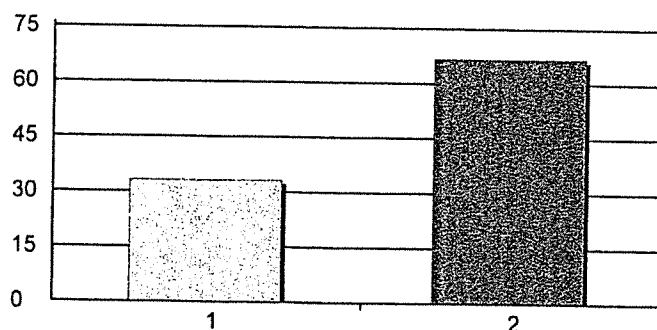
1. Just right	659	41%
2. Obese	229	14%
3. Overweight	699	44%
4. Underweight	18	1%
Total Responses:	1605	

### 9. Have you had (or do you currently have) Allergies?



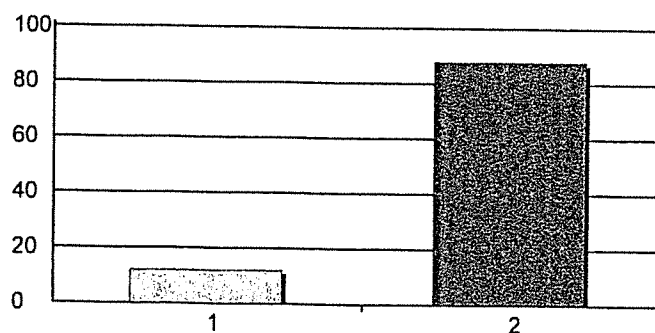
1. Yes	865	46%
2. No	1011	54%
Total Responses:	1876	
Mean: 1.54	Standard Deviation: 0.50	

### 10. Have you had (or do you currently have) Arthritis?



1. Yes	621	33%
2. No	1250	67%
Total Responses:	1871	
Mean: 1.67	Standard Deviation: 0.47	

### 11. Have you had (or do you currently have) Asthma?

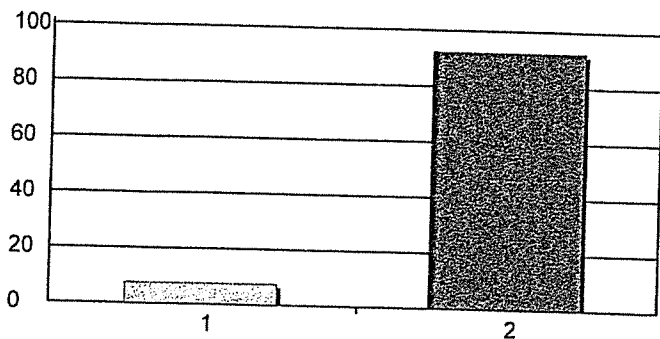


1. Yes	226	12%
2. No	1654	88%
Total Responses:	1880	
Mean: 1.88	Standard Deviation: 0.33	

# Community Needs Assessment Results

## May 2, 2021

12. Have you had (or do you currently have) an Autoimmune disease?



1. Yes

2. No

Total Responses:

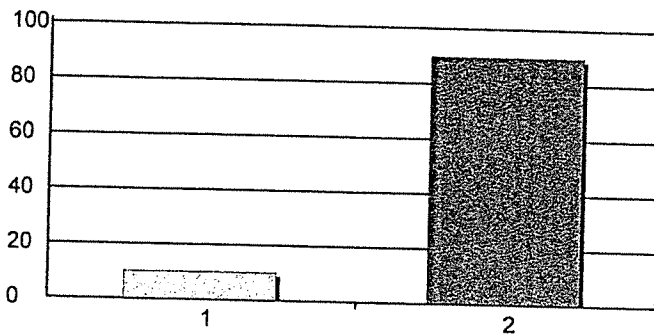
Mean: 1.92 Standard Deviation: 0.26

141 8%

1729 92%

1870

13. Have you had (or do you currently experiencing) Bullying?



1. Yes

2. No

Total Responses:

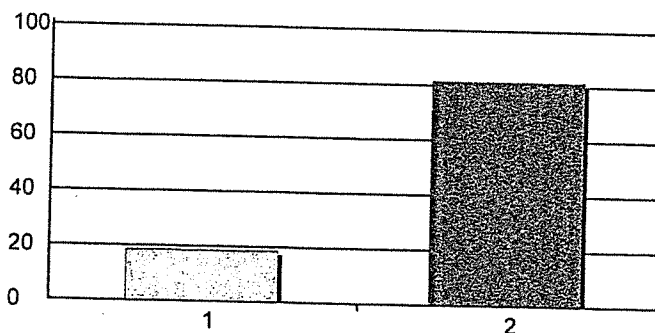
Mean: 1.90 Standard Deviation: 0.30

188 10%

1679 90%

1867

14. Have you had (or do you currently have) Chronic Pain?



1. Yes

2. No

Total Responses:

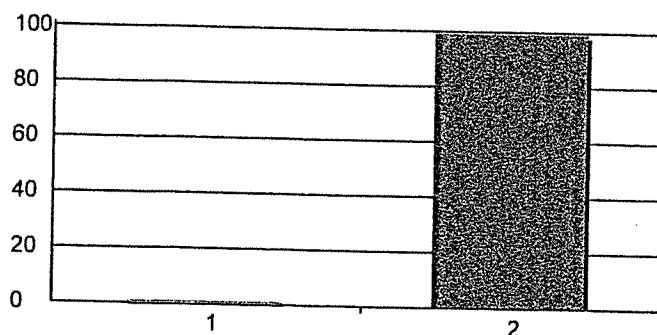
Mean: 1.82 Standard Deviation: 0.39

347 18%

1532 82%

1879

15. Have you had (or do you currently have) Dementia/Alzheimer's?



1. Yes

2. No

Total Responses:

Mean: 1.99 Standard Deviation: 0.09

15 1%

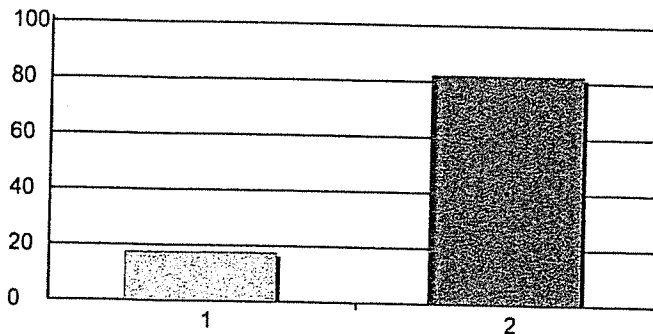
1859 99%

1874

# Community Needs Assessment Results

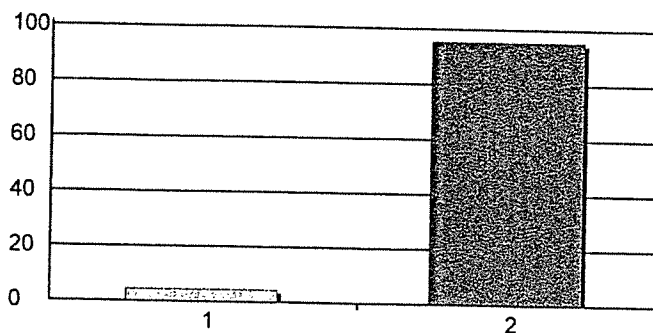
## May 2, 2021

16. Have you had (or do you currently have) **Diabetes**?



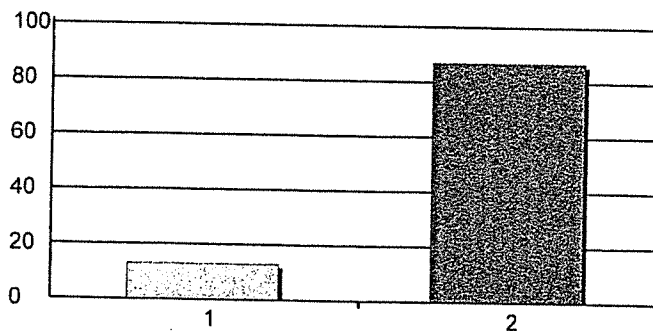
1. Yes 329 18%  
 2. No 1544 82%  
 Total Responses: 1873  
 Mean: 1.82 Standard Deviation: 0.38

17. Have you had (or do you currently have) **Emphysema/COPD**?



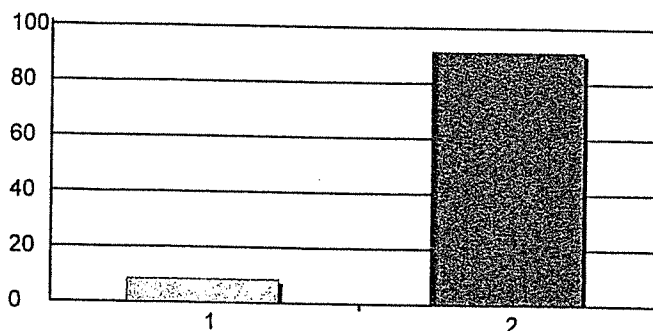
1. Yes 83 4%  
 2. No 1787 96%  
 Total Responses: 1870  
 Mean: 1.96 Standard Deviation: 0.21

18. Have you had (or do you currently have) an **Eye Condition (cataracts, glaucoma, masclar degeneration)**?



1. Yes 243 13%  
 2. No 1631 87%  
 Total Responses: 1874  
 Mean: 1.87 Standard Deviation: 0.34

19. Have you had (or do you currently have) a **Fall or Fall related injury**?

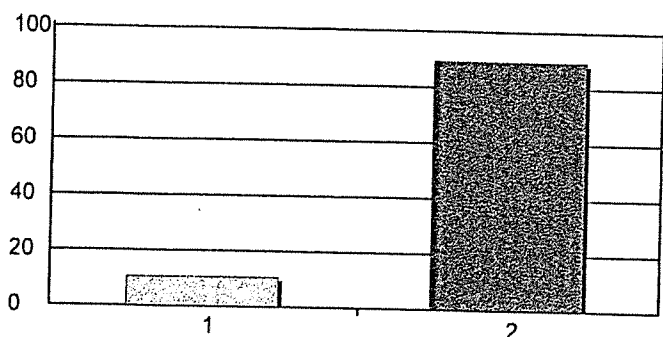


1. Yes 159 8%  
 2. No 1720 92%  
 Total Responses: 1879  
 Mean: 1.92 Standard Deviation: 0.28

# Community Needs Assessment Results

## May 2, 2021

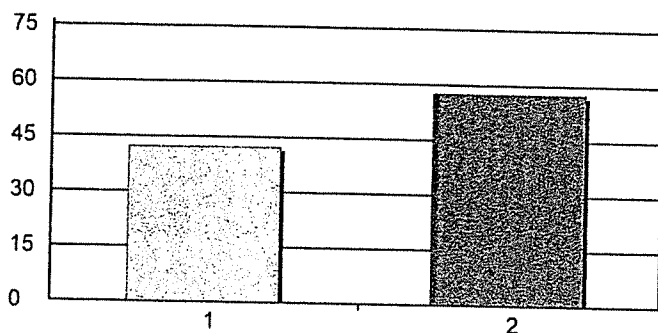
20. Have you had (or do you currently have) **Hearing Loss/Deafness?**



1. Yes  
2. No  
Total Responses:  
Mean: 1.89 Standard Deviation: 0.31

199 11%  
1676 89%  
1875

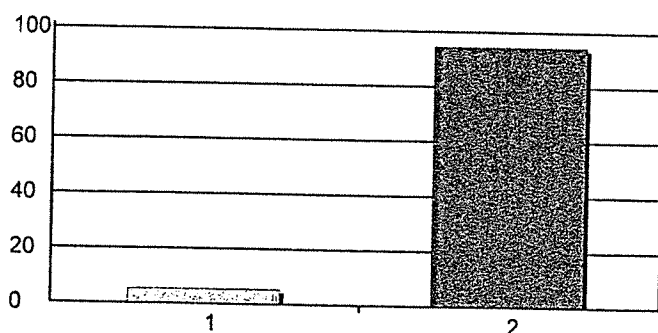
21. Have you had (or do you currently have) **High Blood Pressure?**



1. Yes  
2. No  
Total Responses:  
Mean: 1.58 Standard Deviation: 0.49

790 42%  
1078 58%  
1868

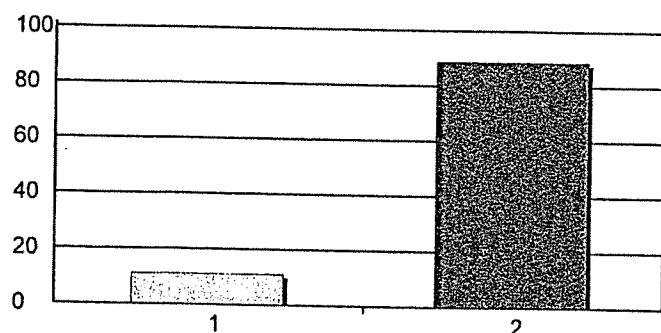
22. Have you had (or do you currently have) **Osteoporosis?**



1. Yes  
2. No  
Total Responses:  
Mean: 1.95 Standard Deviation: 0.23

101 5%  
1770 95%  
1871

23. Have you had (or do you currently have) **a Heart Condition?**



1. Yes  
2. No  
Total Responses:  
Mean: 1.89 Standard Deviation: 0.31

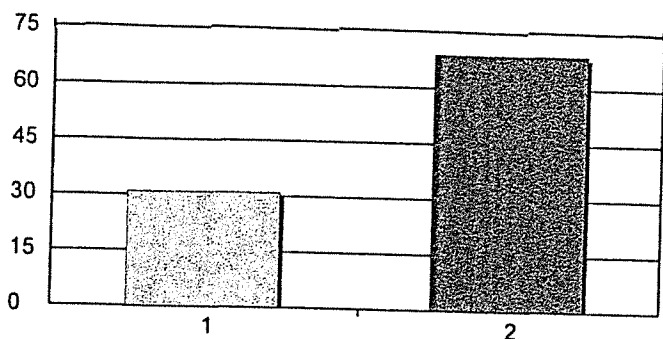
208 11%  
1665 89%  
1873



# Community Needs Assessment Results

## May 2, 2021

24. Have you had (or do you currently have) high levels of Stress?



1. Yes

581 31%

2. No

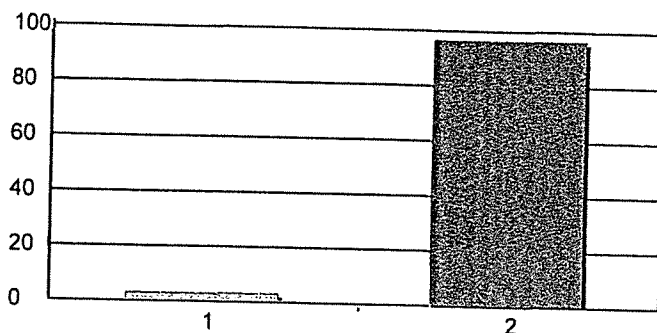
1293 69%

Total Responses:

1874

Mean: 1.69 Standard Deviation: 0.46

25. Have you had a Stroke?



1. Yes

62 3%

2. No

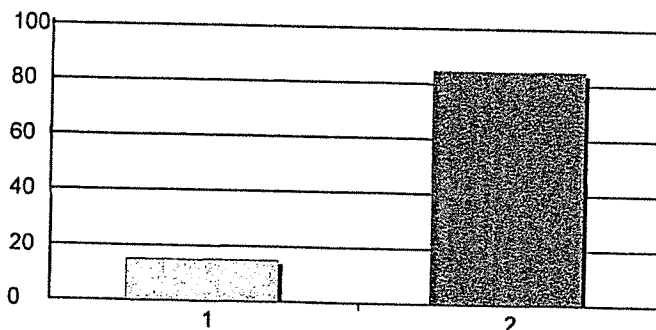
1806 97%

Total Responses:

1868

Mean: 1.97 Standard Deviation: 0.18

26. Lack of financial resources for: Dental care



1. Yes

279 15%

2. No

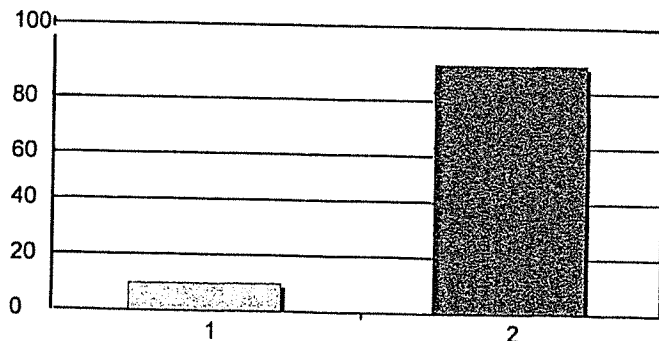
1585 85%

Total Responses:

1864

Mean: 1.85 Standard Deviation: 0.36

27. Lack of financial resources for: Medical care



1. Yes

185 10%

2. No

1673 90%

Total Responses:

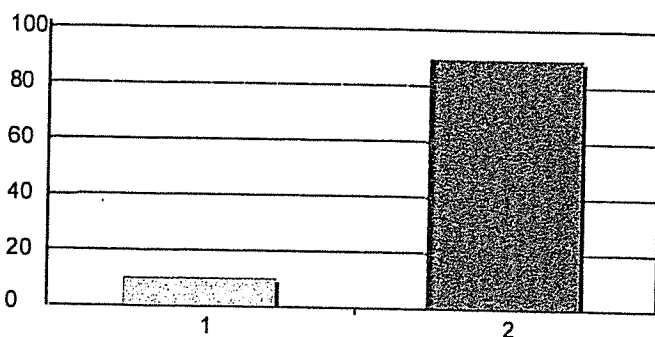
1858

Mean: 1.90 Standard Deviation: 0.30

# Community Needs Assessment Results

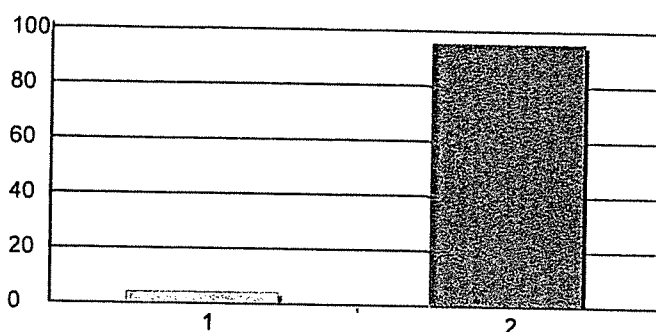
## May 2, 2021

### 28. Lack of financial resources for: Medications



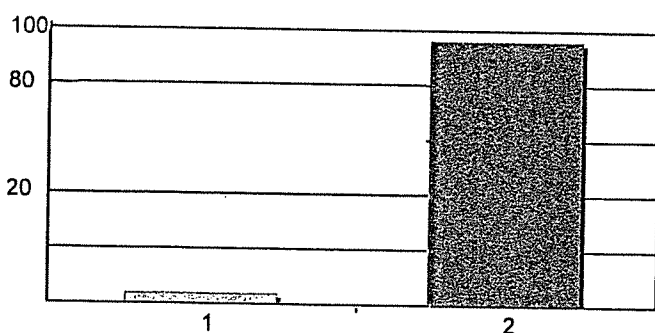
1. Yes 189 10%  
 2. No 1664 90%  
 Total Responses: 1853  
 Mean: 1.90 Standard Deviation: 0.30

### 29. Lack transportationDental care



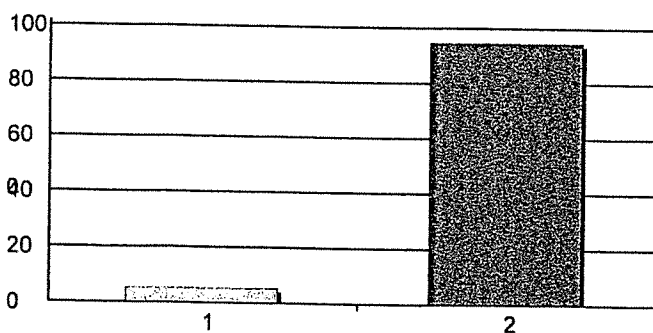
1. Yes 82 4%  
 2. No 1774 96%  
 Total Responses: 1856  
 Mean: 1.96 Standard Deviation: 0.21

### 30. Lack transportation: Medical care



1. Yes 72 4%  
 2. No 1781 96%  
 Total Responses: 1853  
 Mean: 1.96 Standard Deviation: 0.19

### 31. Lack transportation: Medications

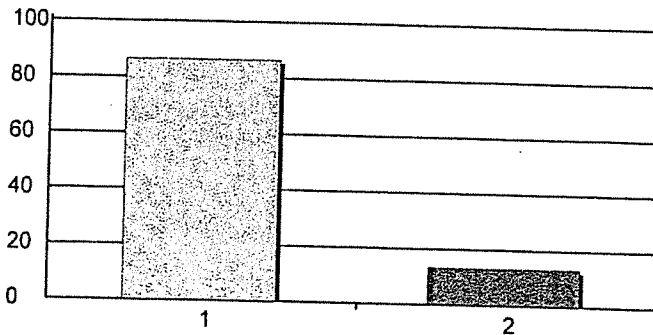


1. Yes 96 5%  
 2. No 1734 95%  
 Total Responses: 1830  
 Mean: 1.95 Standard Deviation: 0.22

# Community Needs Assessment Results

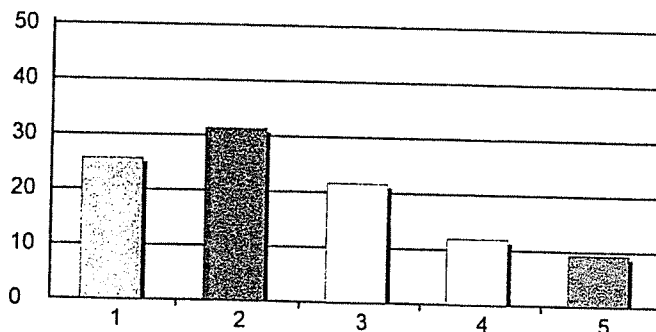
## May 2, 2021

32. Do you have access to **Healthy Foods** (fresh fruits & vegetables, lean meats, whole grain products, low fat milk products)



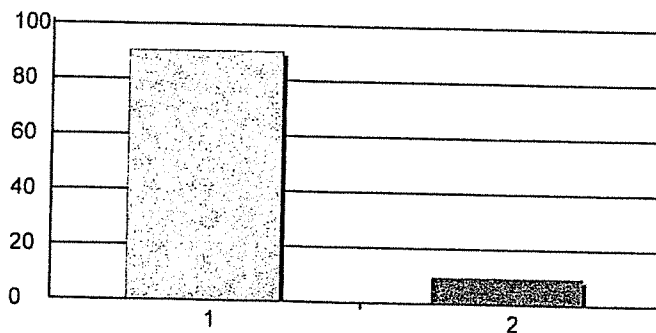
1. Yes 1510 86%  
 2. No 236 14%  
 Total Responses: 1746  
 Mean: 1.14 Standard Deviation: 0.34

33. Mileage How far must you travel to access Healthy Foods?



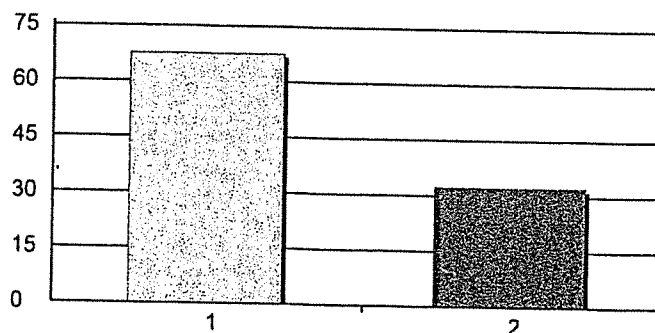
1. less than one mile 450 26%  
 2. over one mile to three miles 550 31%  
 3. over three miles to five miles 379 22%  
 4. over five miles to ten miles 210 12%  
 5. over ten miles 164 9%  
 Total Responses: 1753  
 Mean: 2.48 Standard Deviation: 1.25

34. Mileage Do you have access to information about your health issues?



1. Yes 1665 90%  
 2. No 177 10%  
 Total Responses: 1842  
 Mean: 1.10 Standard Deviation: 0.29

35. Mileage Do you have access to Adult or Child Care?

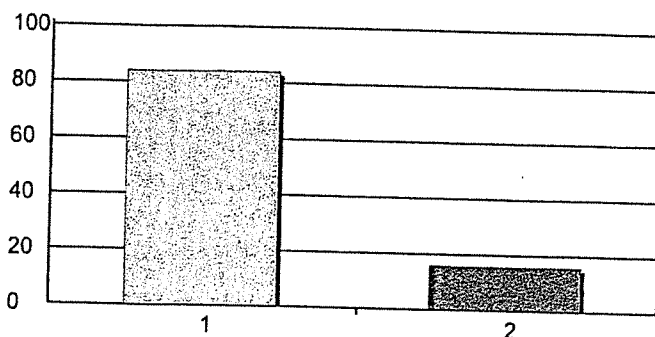


1. Yes 1181 68%  
 2. No 566 32%  
 Total Responses: 1747  
 Mean: 1.32 Standard Deviation: 0.47

# Community Needs Assessment Results

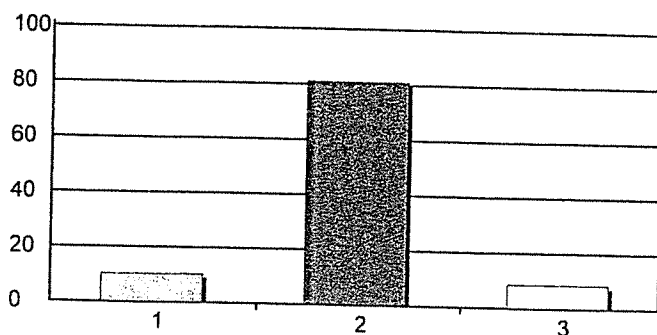
## May 2, 2021

36. Mileage Do you have access to facilities for physical activity?



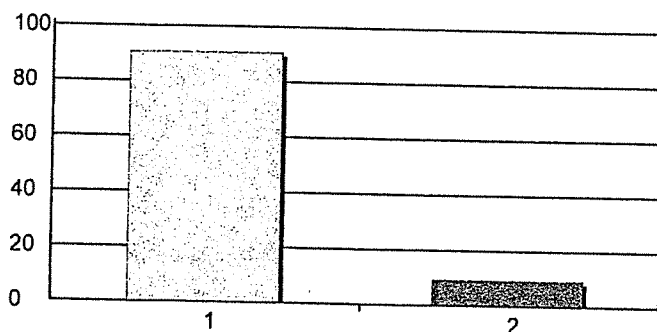
1. Yes 1520 84%  
 2. No 288 16%  
 Total Responses: 1808  
 Mean: 1.16 Standard Deviation: 0.37

37. Mileage Do you have a family history of:



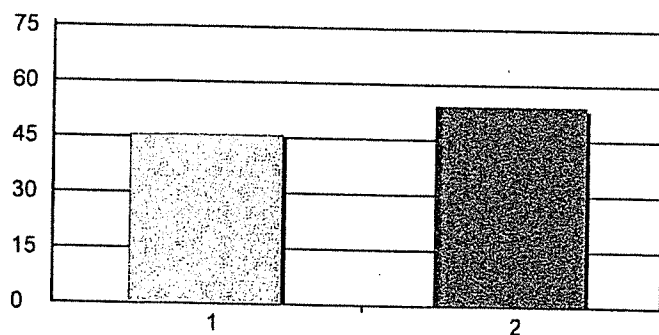
1. suicide 59 10%  
 2. heart failure 463 81%  
 3. opioid use 49 9%  
 Total Responses: 571  
 Mean: 1.98 Standard Deviation: 0.43

38. Mileage Have you or family member had COVID-19 vaccine?



1. Yes 1671 91%  
 2. No 173 9%  
 Total Responses: 1844  
 Mean: 1.09 Standard Deviation: 0.29

39. Mileage Have you or family member had COVID-19?

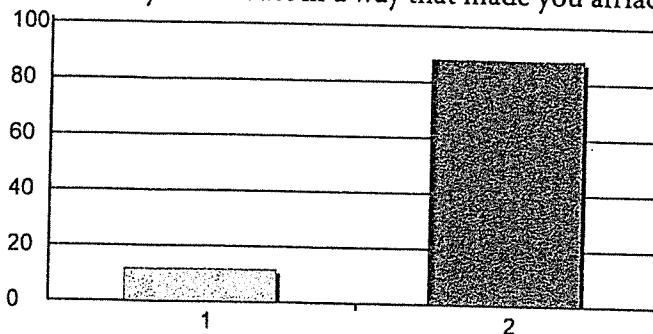


1. Yes 844 46%  
 2. No 1004 54%  
 Total Responses: 1848  
 Mean: 1.54 Standard Deviation: 0.50

# Community Needs Assessment Results

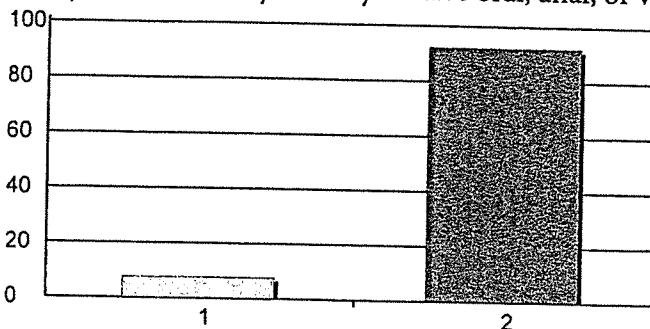
## May 2, 2021

40. Mileage Did a parent or other adult in the household often swear at you, insult you, put you down, or humiliate you? OR act in a way that made you afraid that you might be physically harmed?



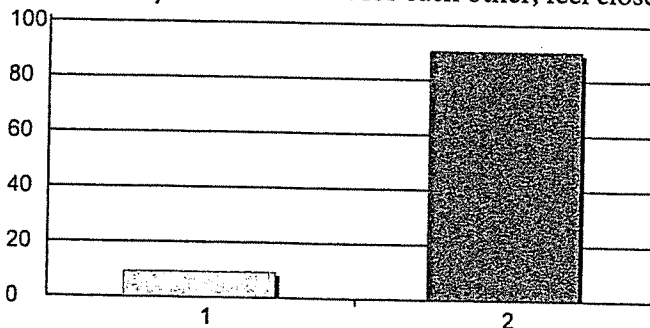
Total Responses: 1822  
Mean: 1.88 Standard Deviation: 0.32

41. Mileage Did an adult or person at least 5 years older than you ever touch or fondle you or have you touch their body in a sexual way? OR try to have oral, anal, or vaginal sex with you?



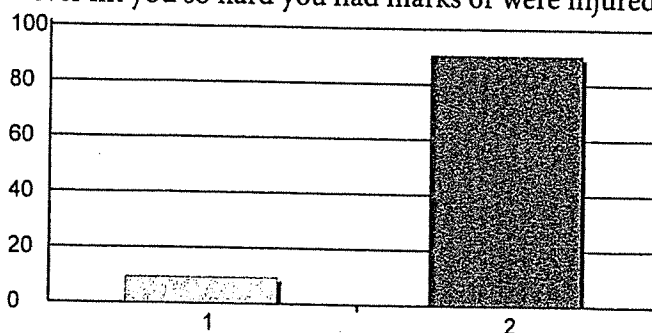
Total Responses: 1808  
Mean: 1.92 Standard Deviation: 0.27

42. Mileage Did you often feel that no one in your family loved you or thought you were important or special? OR Your family didn't look out for each other, feel close to each other, or support each other?



Total Responses: 1812  
Mean: 1.91 Standard Deviation: 0.29

43. Mileage Did a parent or other adult in the household often push, grab, slap, or throw something at you? OR ever hit you so hard you had marks or were injured?

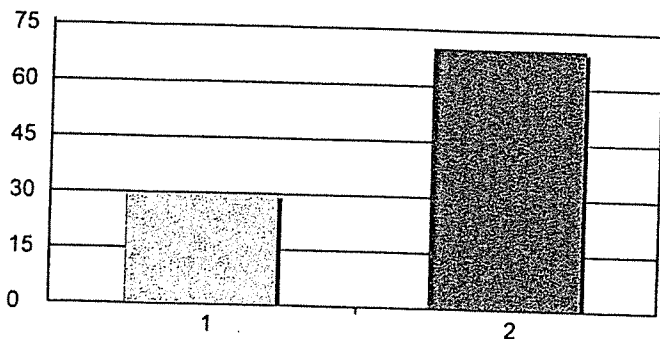


Total Responses: 1811  
Mean: 1.91 Standard Deviation: 0.29

# Community Needs Assessment Results

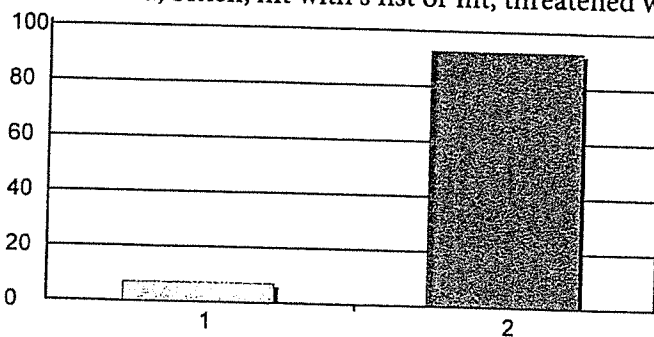
## May 2, 2021

44. Mileage Were your parents ever separated or divorced?



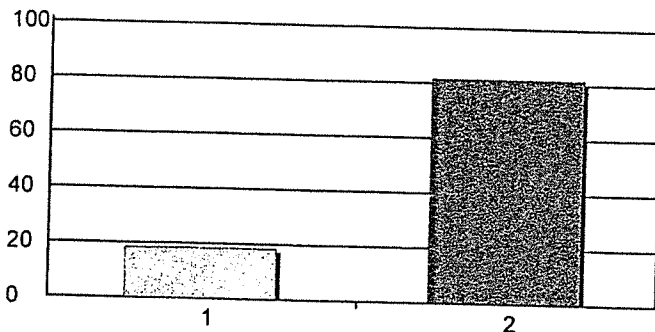
1. Yes 543 30%  
 2. No 1276 70%  
 Total Responses: 1819  
 Mean: 1.70 Standard Deviation: 0.46

45. Mileage Was your mother or stepmother often pushed, grabbed, slapped, or had something thrown at her? Or kicked, bitten, hit with s fist or hit, threatened with a gun or knife?



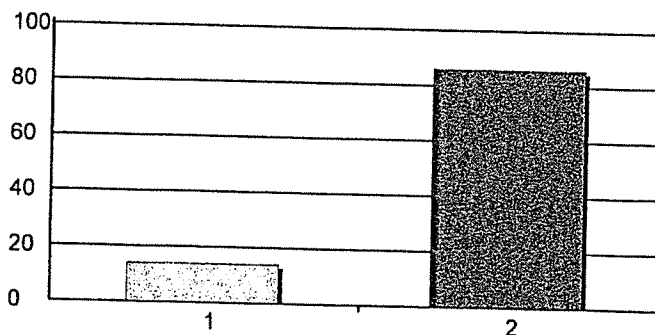
1. Yes 126 7%  
 2. No 1660 93%  
 Total Responses: 1786  
 Mean: 1.93 Standard Deviation: 0.26

46. Mileage Did you live with anyone who was a problem drinker or alcoholic, or used street drugs?



1. Yes 328 18%  
 2. No 1461 82%  
 Total Responses: 1789  
 Mean: 1.82 Standard Deviation: 0.39

47. Mileage Was a household member depressed or mentally ill or did a household member ever attempt suicide?

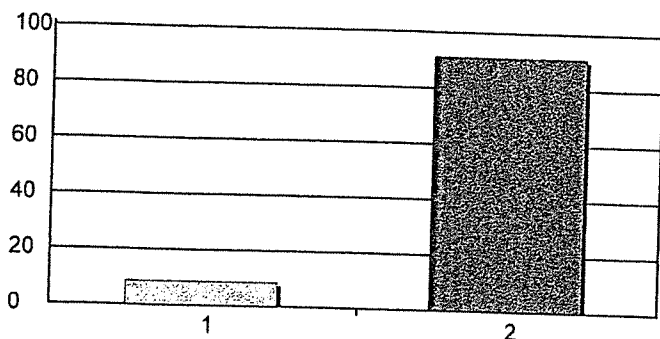


1. Yes 251 14%  
 2. No 1547 86%  
 Total Responses: 1798  
 Mean: 1.86 Standard Deviation: 0.35

# Community Needs Assessment Results

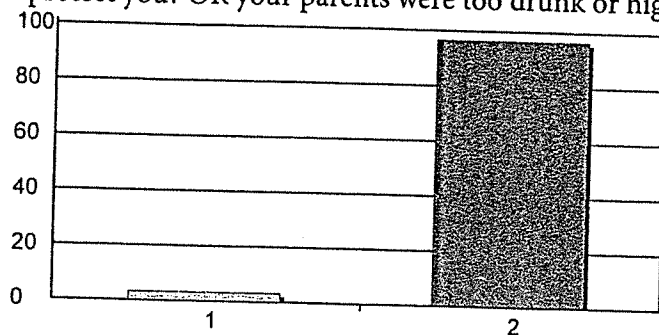
## May 2, 2021

48. Mileage Did a household member every go to prison?



1. Yes 156 9%  
 2. No 1643 91%  
 Total Responses: 1799  
 Mean: 1.91 Standard Deviation: 0.28

49. Mileage Did you often feel that you did not have enough to eat, had to wear dirty clothes, or had no one to protect you? OR your parents were too drunk or high to take care of you or take you to the



1. Yes 58 3%  
 2. No 1743 97%  
 Total Responses: 1801  
 Mean: 1.97 Standard Deviation: 0.18  
 doctor?