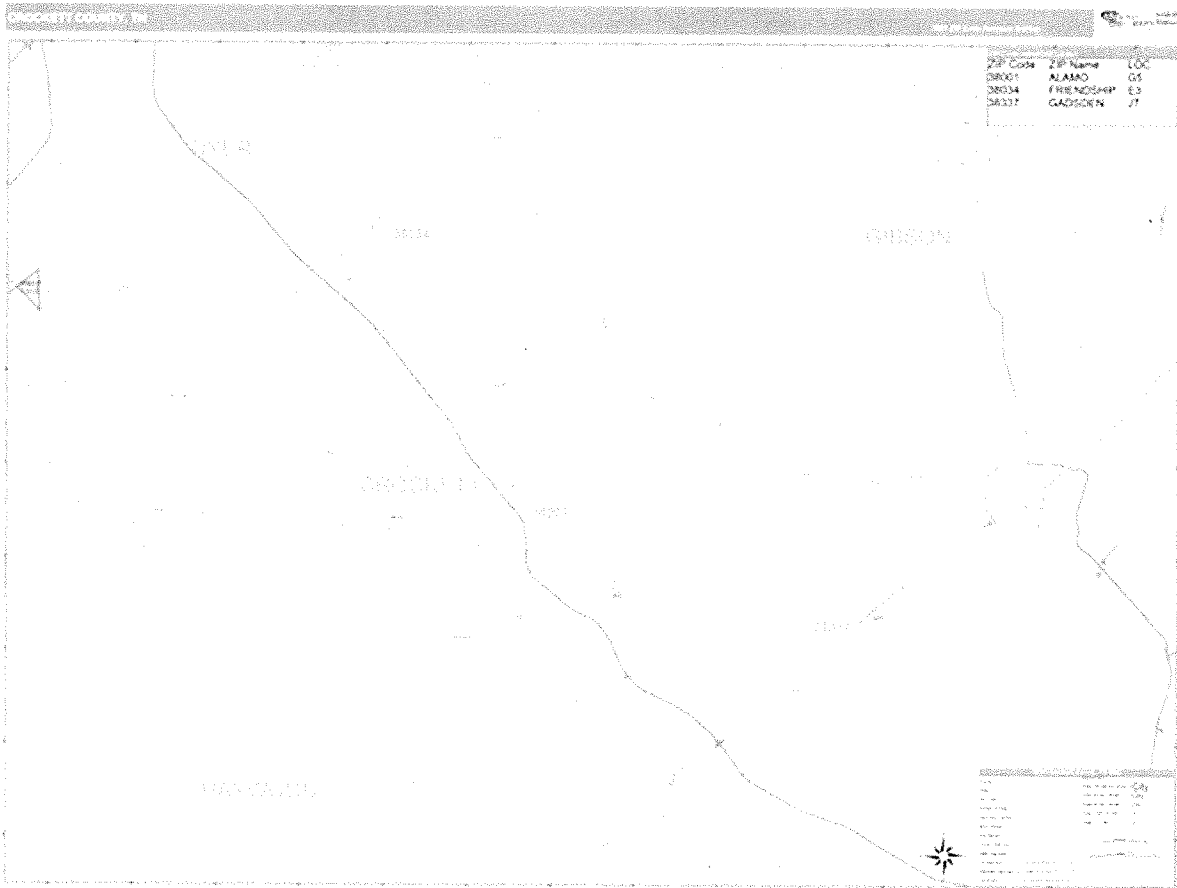


Community Health Needs Assessment

Crockett County, Tennessee



Conducted by:

Department of Community Development

Victoria S. Lake

Update October 2021

**In fulfillment of requirements of the Patient Protection and Affordable Care Act
Pub.L.No.111-148, 124 Stat. 119, enacted March 23, 2010; and Department of Treasury
Internal Revenue Service 26 CFR Parts 1, 53, and 62 *Additional Requirements for
Charitable Hospitals; Community Health Needs Assessments for Charitable Hospitals;
Requirement of a Section 4959 Excise Tax Return and Time for filing the Return.***

RESOLUTION OF THE BOARD OF TRUSTEES
OF
JACKSON-MADISON COUNTY GENERAL HOSPITAL DISTRICT
AND
CAMDEN GENERAL HOSPITAL, INC.
AND
BOLIVAR GENERAL HOSPITAL, INC.
AND
MILAN GENERAL HOSPITAL, INC.
AND
DYERSBURG HEALTH
AND
MARTIN HEALTH
AND
PATHWAYS OF TENNESSEE, INC.

COMMUNITY HEALTH NEEDS ASSESSMENT APPROVAL

WHEREAS, the Patient Protection and Affordable Care Act, enacted March 10, 2010, requires public and not-for-profit hospitals to perform a Community Health Needs Assessment for each hospital; and

WHEREAS, the staff of the District has conducted such an Assessment and prepared the report as required for each of its hospitals; and

WHEREAS, the Assessments were prepared in accordance with IRS rules and regulations, as amended, regarding Community Health Needs Assessments for Tax Exempt Hospitals; and

WHEREAS, the Board finds that the Assessments substantially meet the requirements of the of the Patient Protection and Affordable Care Act and the applicable IRS rules and regulations, and that the Implementation Strategies set forth in the Assessments shall be implemented in accordance with Management recommendations.

NOW, THEREFORE, BE IT RESOLVED, that the Community Health Needs Assessments given to the Board are approved and adopted.

ADOPTED, this the 26th day of October, 2021.

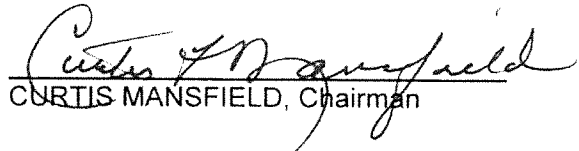
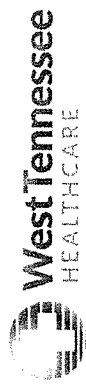

CURTIS MANSFIELD, Chairman

EXHIBIT: 2-5



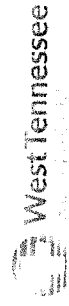
2021 Community Health Needs Assessment

Executive Summary

2021 Assessment

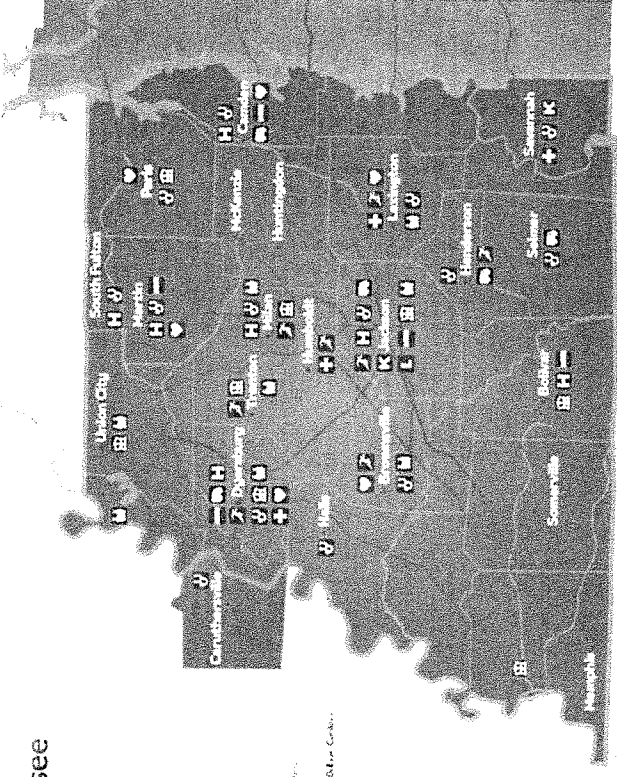
Assessments were conducted for Madison, Benton, Chester, Crockett, Dyer, Gibson, Haywood, Hardeman, Weakley, and for Pathways as a mental health hospital.

The 2021 Assessment was an update of those conducted 2012, 2015, and 2018.



Services

- Hospitals
Benton, Chester, Crockett, Dyer, Gibson, Haywood, Madison, Weakley, and Pathways
- Medical Centers
Benton, Chester, Crockett, Dyer, Gibson, Haywood, Madison, Weakley, and Pathways
- West Tennessee Medical Group
Benton, Chester, Crockett, Dyer, Gibson, Haywood, Madison, Weakley, and Pathways
- Heart
Benton, Chester, Crockett, Dyer, Gibson, Haywood, Madison, Weakley, and Pathways
- Hospital Home Health
Benton, Chester, Crockett, Dyer, Gibson, Haywood, Madison, Weakley, and Pathways
- Pathways
Benton, Chester, Crockett, Dyer, Gibson, Haywood, Madison, Weakley, and Pathways
- Sleep Centers
Benton, Chester, Crockett, Dyer, Gibson, Haywood, Madison, Weakley, and Pathways
- Sports Plus Centers
Benton, Chester, Crockett, Dyer, Gibson, Haywood, Madison, Weakley, and Pathways
- Kirtland Cancer Center
Benton, Chester, Crockett, Dyer, Gibson, Haywood, Madison, Weakley, and Pathways
- Lift Wellness Center
Benton, Chester, Crockett, Dyer, Gibson, Haywood, Madison, Weakley, and Pathways
- EMS
Benton, Chester, Crockett, Dyer, Gibson, Haywood, Madison, Weakley, and Pathways

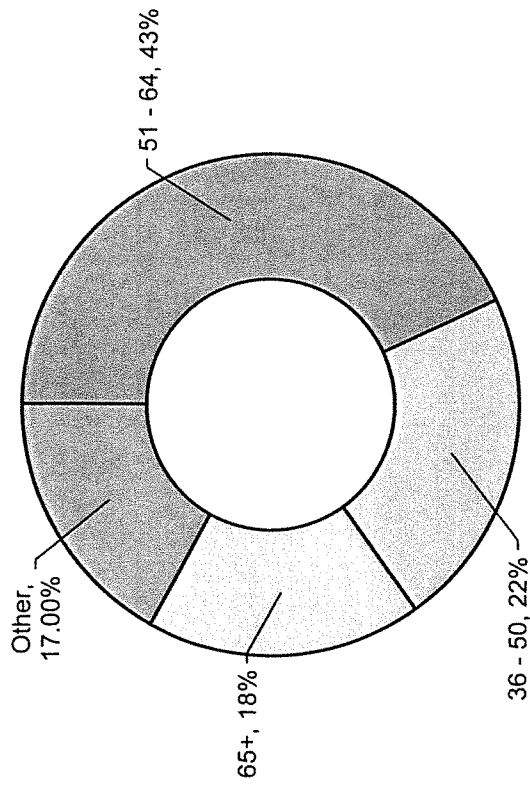


Methodology

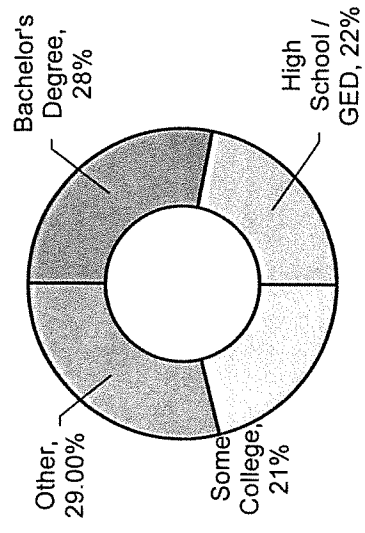
- The first stage of the Update process involved gathering secondary data from multiple sources for each county.
- The second step in the Community Health Needs Assessment Update process consisted of creating a survey to collect data from residents on local health issues. The survey consisted of 49 questions that asked basic demographics of age, race, education level, insurance, county of residence, presence or absence of specific health issues, access to care, physical activity, health information, and ten questions on adverse childhood experiences prior to 18th birthday. Respondents were requested to answer a simple “yes” or “no” to specific health issues and adverse childhood experiences.
- The survey instrument was distributed by hand during community wide COVID-19 vaccination clinics at Lane College and Humboldt Medical Center on March 20, 2021; and Jackson-Madison County General Hospital on March 30, 2021. **Data from 1,895 completed surveys was collected.**

Respondents

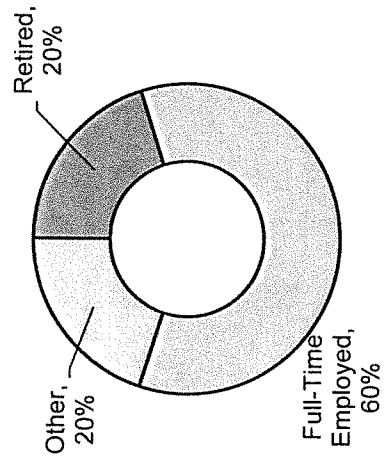
By Age



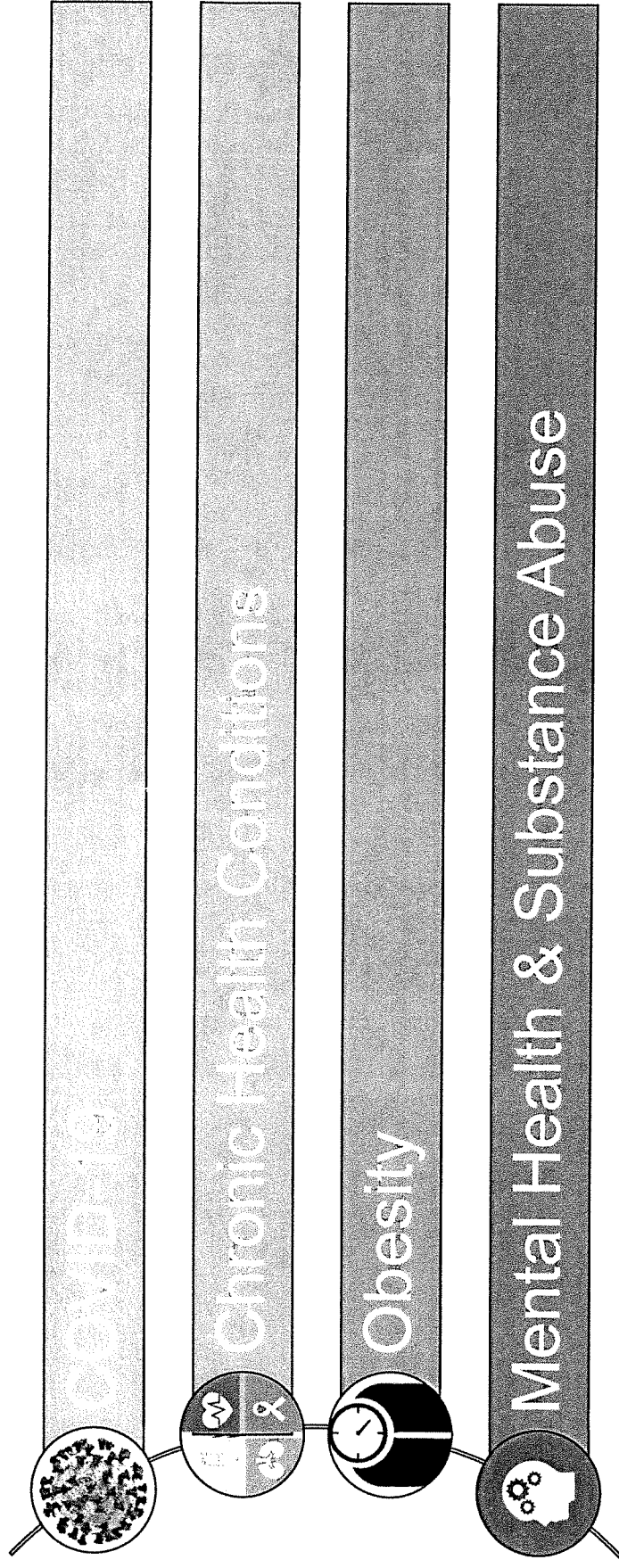
Education Level



Employment Status



Priority Health Issues Acute Care



Priority Behavioral Health Issues Pathways

Depression

Domestic Violence/Anger Management

Co-Occurring Mental Health & Substance Abuse

Alcohol, Drug, and Prescription Drug Abuse (emphasis on Opioid Crisis)

Suicide

Table of Contents

West Tennessee Healthcare Community Needs Assessment Summary 2021	1
Introduction	2
Description of the Hospital and Community	2
Description of Community Health Needs Assessment Update Process	3
Results of Survey	5
Survey Respondent Demographics	6
Results of Secondary Data Analysis	10
Priority Health Issues	15
Conclusion	15

Attachment A	Secondary Data
Attachment B	Summary-Secondary Data
Attachment C	Community Health Assessment Survey Instrument
Attachment D	Community Health Assessment Survey Results

West Tennessee Healthcare Community Health Needs Assessment Summary 2021

Needs assessments were completed in fulfillment of requirements of the Patient Protection and Affordable Care Act Pub.L.No.111-148, 124 Stat. 119, enacted March 23, 2010; and Department of Treasury Internal Revenue Service 26 CFR Parts 1, 53, and 62 *Additional Requirements for Charitable Hospitals; Community Health Needs Assessments for Charitable Hospitals; Requirement of a Section 4959 Excise Tax Return and Time for filing the Return.*

Assessments were conducted for Madison, Benton, Chester, Crockett, Dyer, Gibson, Haywood, Hardeman, Weakley, and for Pathways as a mental health hospital. This document reflects work done for the Crockett County Community Health Needs Assessment.

The 2021 needs assessments were update of those conducted in 2012, 2015, and 2018. Because of high volumes of COVID-19, this is a limited needs assessment conducted by a committee of West Tennessee Healthcare staff. Tennessee Department of Health Community Health Councils are not meeting on a regular basis due to COVID-19 so input from community representatives was not available. Jackson-Madison County General Hospital and other community agencies are conducting very little community outreach efforts. WTH staff will reconvene the Needs Assessment Committee in 2022, and upon consultation with the Health Council, will update outreach strategies.

The first stage of the Update process involved gathering secondary data from multiple sources for each county. The second step in the Community Health Needs Assessment Update process consisted of creating a survey to collect data from residents on local health issues. The survey consisted of 49 questions that asked basic demographics of age, race, education level, insurance, county of residence, presence or absence of specific health issues, access to care, physical activity, health information, and ten questions on adverse childhood experiences prior to 18th birthday. Respondents were requested to answer a simple “yes” or “no” to specific health issues and adverse childhood experiences.

The survey instrument was distributed by hand during community wide COVID-19 vaccination clinics at Lane College and Humboldt Medical Center on March 20, 2021; and Jackson-Madison County General Hospital on March 30, 2021. Data from 1,895 completed surveys was collected.

Sixteen WTH staff and two members from Quality Council were asked to serve on an Internal Committee to review secondary and survey data. Surveys were distributed at several locations, and data were requested on basic respondent demographics. The age group 51 to 64 represented 43 percent of respondents, followed by age 36 to 50 (22 percent), and age 65 and older (18 percent). The predominant education level is respondents with a Bachelors degree (28 percent), followed by high school graduate/ GED (22 percent) and some college (21 percent). Sixty percent (60 percent) of respondents were working full time and 20 percent were retired. A majority of individuals completing the survey were women (56 percent), had private health insurance (59 percent, and were Caucasian (68 percent)

Upon a review of survey responses and secondary data, four priority health issues were identified.

COVID-19
Chronic Health Conditions
Obesity
Mental Health and Substance Abuse Issues

Pathways Issues

Depression
Domestic Violence/Anger Management
Co-Occurring Mental Health & Substance Abuse
Alcohol, Drug, and Prescription Drug Abuse (emphasis on Opioid Crisis)
Suicide

Introduction

Under the leadership of Jackson-Madison County General Hospital, a community health needs assessment was conducted in 2021. The needs assessment was completed in fulfillment of requirements of the Patient Protection and Affordable Care Act Pub.L.No.111-148, 124 Stat. 119, enacted March 23, 2010; and Department of Treasury Internal Revenue Service 26 CFR Parts 1, 53, and 62 *Additional Requirements for Charitable Hospitals; Community Health Needs Assessments for Charitable Hospitals; Requirement of a Section 4959 Excise Tax Return and Time for filing the Return.*

This 2021 needs assessment is an update of those conducted in 2012, 2015, and 2018. Because of high volumes of COVID-19, this is a limited needs assessment conducted by a committee of West Tennessee Healthcare staff. Tennessee Department of Health Community Health Councils are not meeting on a regular basis due to COVID-19 so input from community representatives was not available. Jackson-Madison County General Hospital and other community agencies are conducting very little community outreach efforts. The Hospital will reconvene the Needs Assessment Committee in 2022, and upon consultation with the Health Council, will update outreach strategies. The process used to conduct this limited assessment is described in the following pages.

Description of the Hospital and Community

The designated “community” for the needs assessment is Crockett County, Tennessee. Crockett County, Tennessee does not have a hospital. However, Crockett County is in the primary service area of Jackson-Madison County General Hospital. With a 2020 Decennial Census population of 13,911, Crockett County is located in rural Southwest Tennessee approximately 83 miles East of Memphis and 148 miles West of Nashville. The population is 10.8 percent Hispanic and 89.2 percent Other. According to the Tennessee Department of Economic & Community Development, 17.8 percent of persons living in households are below the Federal poverty level. The personal income per capita is \$40,735. The population 18 to 64 represents 57.5 percent, while the age 65 and older population is 18.6 percent of the total. The high school graduation

rate is 98 percent; 21.0 percent have an Associate Degree or higher and 13.9 percent have a Bachelor Degree or higher.

Crockett County has a wide range of industries that employ individuals living in and around the county. Crockett County is home to manufacturers and businesses such as Pictsweet Company (1,000 employees) processor of frozen vegetables, Tennessee Tractor, LLC (277 employees), ABB, Inc. (250 employees), Bells Nursing Home, Inc. (125 employees), and Crockett County Nursing Home, Inc. (125 employees),

Other top employers are Crockett County Board of Education with 300 employees, Crockett County Government (110 employees), Alamo City Schools (100 employees), and Bells City Schools (60) employees).

The county seat of Crockett County is Alamo, Tennessee. The City of Alamo, City of Bells, City of Friendship, Crockett County Government, and Crockett County School System are all located in the county.

The School Systems in Crockett County total 2,862 students.

Description of Community Health Needs Assessment Update Process

The mission of the Community Health Needs Assessment is to evaluate and improve the health status and wellbeing of residents in Crockett County, Tennessee with an emphasis on preventive measures. The community health needs assessment was a review of survey results and secondary data identifying state and regional health data.

The Community Health Needs Assessment had ten (10) organizational goals.

1. To form alliances between Jackson-Madison County General Hospital. non-profit organizations, and the community at large to assess, improve, and promote the community health of Crockett County, Tennessee.
2. To identify internal resources already available to assist in improving community health.
3. To assist in identifying available community resources.
4. To define “health” as it pertains to Crockett County, Tennessee.

5. To identify collaborative partners.
6. To educate and gain formal support of West Tennessee Healthcare leadership team, Board of Trustees, community leaders, and others.
7. To assist in establishing baseline health status assessment of Crockett County by collecting and reviewing available secondary data and statistics from resident surveys.
8. To assist in determining standards against which to measure current and future health status of the community.
9. To assist in communitywide establishment of health priorities and in facilitating collaborative planning, actions, and direction to improve community health status and quality of life.
10. To promote the need for ongoing evaluation of the community health assessment process to learn results, establish new goals and encourage further community action and involvement.

The first stage of the Update process involved gathering secondary data from multiple sources including the Tennessee Department of Health, County Health Rankings and Roadmaps, Tennessee Department of Economic & Community Development, Tennessee Department of Mental Health and Substance Abuse Services, Tennessee Bureau of Investigation, Centers of Disease Control and Prevention, Tennessee Behavioral Health County and Region Services Data Book, Tennessee Department of Health. Behavioral Risk Factor Surveillance System, and Traumatic Brain Injury Program. These data are presented in **Attachment A**.

The second step in the Community Health Needs Assessment Update process consisted of creating a survey to collect data from residents on local health issues. The survey consisted of 49 questions that asked basic demographics of age, race, education level, insurance, county of residence, presence or absence of specific health issues, access to care, physical activity, health information, and ten questions on adverse childhood experiences prior to 18th birthday.

Respondents were requested to answer a simple “yes” or “no” to specific health issues and adverse childhood experiences. **Attachment B** contains a summary of secondary data.

The survey instrument was distributed by hand during community wide COVID-19 vaccination clinics at Lane College and Humboldt Medical Center on March 20, 2021; and Jackson-Madison

County General Hospital on March 30, 2021. Data from 1,895 completed surveys was collected. **Attachment C** contains a copy of the survey instrument, and **Attachment D** has a copy of the survey results.

An internal committee of West Tennessee Healthcare staff were identified to participate in the update process.

Vicki Lake	Department of Community Development
Rose Bailey	Department of Diversity, Health Equity, and Operational Excellence
Ruby Kirby	WTH Bolivar Hospital and WTH Camden Hospital
Joyce Noles	Emergency Services
Deena Kail	West Tennessee Women's Center, Ayers Children's Medical Center
Gina Myracle	Alice and Carl Kirkland Cancer Center
Melissa Walls	Virtual Care
Frank McMeen	West Tennessee Healthcare Foundation
Anna Tetleton Burns	Primary Care Clinics
Miki Martin	LIFT
LeAnn Childress	LIFT Therapy
Pam Henson	Pathways Behavioral Health Services
Betty Haskins	WTH Camden Hospital
Scott Barber	WTH Dyersburg Hospital
Sherry Scruggs	WTH Milan Hospital
Kevin Decker	WTH Volunteer Hospital
Tina Prescott	Administration
Vanessa Patrick	Administration

Results of Survey (N=1,895)

Health prevalence was identified by the percentage of respondents indicating they had experienced a specific medical issue. Figure 1 contains the ranking according to prevalence among respondents.

Figure 1: Health Issue Prevalence

Allergies	46%	Lack of financial resources: dental care	15%
High Blood Pressure	42%	Lack of financial resources: medical care	10%
Arthritis	33%	Lack of financial resources: medications	10%
Stress	31%	Lack of transportation: medications:	5%
Chronic Pain	18%	Lack of transportation: dental care	4%
Diabetes	18%	Lack of transportation: medical care	4%
Eye Conditions	14%		
Asthma	12%	No access to adult or child care	32%
Hearing Loss	11%	No access to physical activity facilities	16%
Heart Conditions	11%	No access to healthy foods	14%
Bullying	10%		
Autoimmune Disease	8%	Family history of heart failure	81%
Fall Injuries	8%	Family history of suicide	10%
Osteoporosis	5%	Family history of opioid use	9%
COPD	4%		
Stroke	3%	COVID-19 Vaccination Experienced	91%
Dementia/Alzheimers	1%	COVID-19	46%

Survey Respondent Demographics

Surveys were distributed at several locations, and data were requested on basic respondent demographics. The age group 51 to 64 represented 43 percent of respondents, followed by age 36 to 50 (22 percent), and age 65 and older (18 percent) (Figure 2). The predominant education level is respondents with a Bachelors degree (28 percent), followed by high school graduate/GED (22 percent) and some college (21 percent) (Figure 3). Sixty percent (60 percent) of respondents were working full time and 20 percent were retired (Figure 4). A majority of individuals completing the survey were women (56 percent) (Figure 5), had private health insurance (59 percent) (Figure 6), and were Caucasian (68 percent) (Figure 7).

Figure 2: Age Distribution

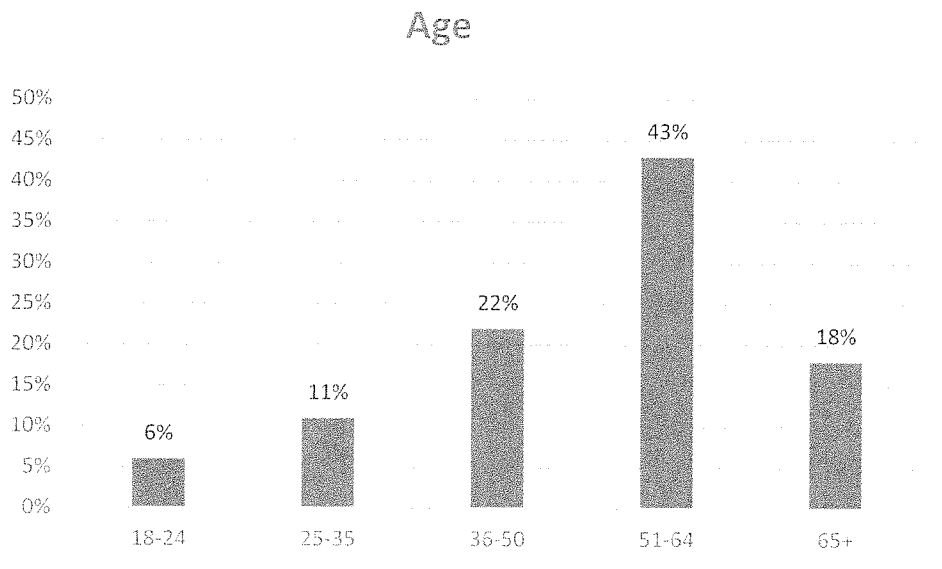


Figure 3: Education Levels

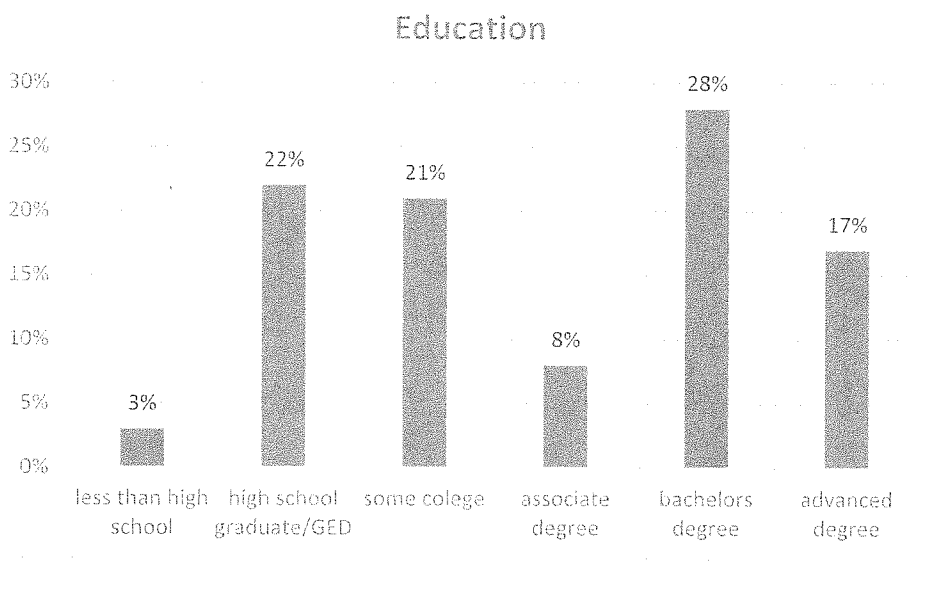


Figure 4: Employment Status

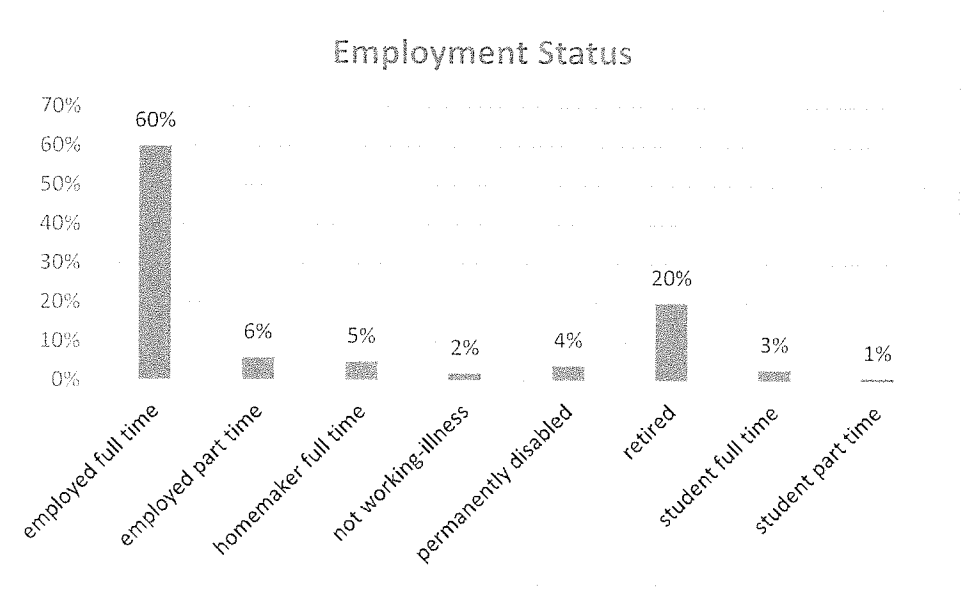


Figure 5: Gender

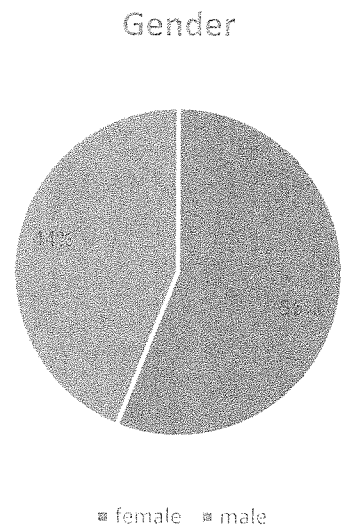


Figure 6: Insurance Coverage

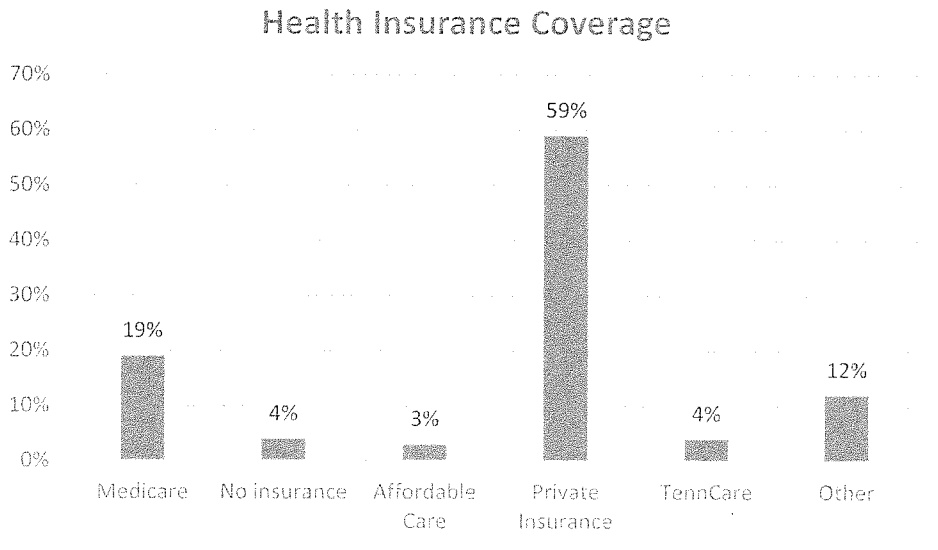
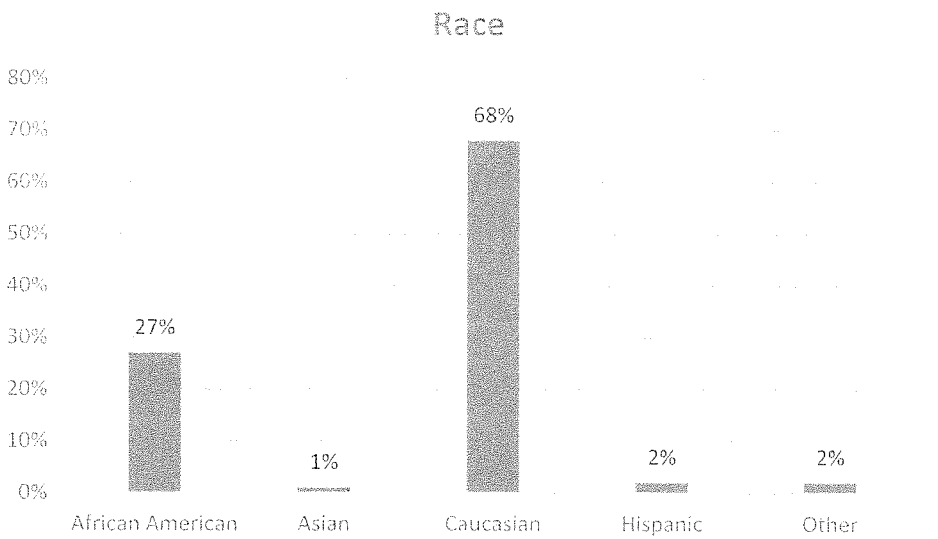


Figure 7: Race



Results of Secondary Data Analysis

The West Tennessee Healthcare Committee reviewed secondary data, focusing on indicators where the county consistently had higher rates, percentages, volumes than the state as a whole. For Crockett County, death from cancer, deaths from heart disease, uninsured population, persons in poverty, obesity, tobacco use, deaths from diabetes, teen pregnancy, and drug-related issues were consistently higher than the State of Tennessee as a whole.

Table 1: Deaths from Diseases of the Cancer Per 100,000

Deaths from Malignant Neoplasms Per 100,000							
	Total	Crockett			Total	TN	
		White	Black			White	Black
2018	293.3	296.3	*		208.8	226.9	170.7
2017	276.3	258.6	*		212.8	230.6	173.1
2016	284.7	301.6	*		217.5	235.1	178.0
2015	205.4	222.5	*		214.8	229.5	170.4
2014	143.2	138.9	*		216.1	231.8	182.4
2013	247.0	294.1	0.0		214.5	231.0	176.4
2012	205.2	212.0	0.0		211.2	226.5	176.3
2011	268.1	277.1	0.0		210.2	224.6	180.1
2010	219.4	235.2	0.0		212.9	234.6	178.9
2009	223.2	188.9	0.0		216.2	226.9	183.5

Source: Tennessee Department of Health.

Table 2: Death from Diseases from the Heart per 100,000

Death from Diseases of the Heart Per 100,000							
Rate	Total	Crockett			Total	TN	
		White	Black			White	Black
2018	447.0	474.0	*		242.5	263.2	199.7
2017	545.7	567.3	*		238.4	259.5	193.8
2016	388.8	393.8	*		232.1	249.9	196.8
2015	527.2	585.1	*		237.5	252.8	190.1
2014	402.5	457.7	*		232.0	250.8	189.3
2013	466.5	498.4	0.0		226.7	245.1	183.1

2012	355.7	309.8	0.0	220.6	241.2	165.2
2011	439.9	440.1	0.0	221.0	239.7	175.3
2010	431.9	418.2	0.0	228.3	254.0	181.8
2009	493.7	495.9	0.0	228.0	241.1	185.8

Source: Tennessee Department of Health.

Table 3: Uninsured Population

Uninsured Adults-Percent Population Under Age 65 without health insurance

	Crockett	TN
2020	18	14
2019	17	13
2018	15	12
2017	18	14
2016	20	16
2015	19	16
2014	19	17

Source: Robert Wood
Johnson Foundation

Table 4: Persons in Poverty

All People in Poverty-Percent

	Crockett	US
2020	19.4	10.5

Source: County and City QuickFacts.

Table 5: Obesity Percent Adults with Body Mass Greater 25-Overweight or Obese

Percent of Adults who have a body mass index greater than 25-overweight or obese			
	Crockett		TN
2020		40	33
2019		34	33
2018		29	32
2017		33	32
2016		35	32
2015		36	32
2014		35	32
2013		34	32
2012		34	32
2011		33	31
2010		30	31

Source: Robert Wood Johnson Foundation and University of Wisconsin

Table 6: Tobacco Use

Adult Smoking-Percent of Adults that report smoking at least 100 cigarettes			
	Crockett		TN
2020		23	23
2019		24	22
2018		24	22
2017		24	22
2016		24	24
2015		27	23
2014		27	23

Source: Robert Wood Johnson Foundation and University of Wisconsin
Population Health Institute.

Table 7: Deaths from Diabetes

Deaths from Diabetes per 100,000							
	Total	Crockett White	Black		TN Total	White	Black
2018	14.0	8.5	*		29.9	29.4	38.0
2017	48.4	41.7	*		28.5	28.1	36.1
2016	55.5	58.6	*		28.4	27.5	37.3
2015	27.4	33.0	-		27.1	26.6	32.8
2014	34.1	32.7	*		26.3	25.8	33.5
2013	41.2	16.3	0.0		27.9	27.1	36.8
2012	47.9	57.1	0.0		28.2	27.4	36.7
2011	34.4	24.5	0.0		27.1	26.3	35.7
2010	27.4	34.8	0.0		26.4	26.4	35.0
2009	33.8	39.4	0.0		28.2	26.8	37.7

Source: Tennessee Department of Health.

Table 8: Teen Pregnancy

Pregnancies Age 10-17 per 1,000 Females						
	Crockett				TN	
	Total	White	Black	Total	White	Black
2018	7.5	9.6	*	4.6	3.7	8.8
2017	7.3	7.8	8.3	4.9	4.1	8.7
2016	3.8	3.3	8.4	5.4	4.5	9.7
2015	2.3	2.9	*	6.0	5.1	10.2
2014	5.9	5.8	8.9	6.3	5.5	10.7
2013	5.0	6.1	*	7.2	6.0	12.0
2012	9.8	10.3	9.3	8.3	7.0	14.0
2011	9.6	7.1	30.0	8.9	7.3	15.5
2010	15.7	14.4	39.6	10.0	8.3	17.9
2009	13.4	10.0	9.4	12.0	9.1	21.9
Pregnancies Age 15-17 Per 1,000 Females						
	Crockett				TN	
	Total	White	Black	Total	White	Black

Crockett County Community Health Needs Assessment
2021 Update

2018	17.9	23.9	*	11.6	9.5	21.6
2017	21.3	*	*	12.4	10.5	21.4
2016	10.8	*	*	13.7	11.5	23.6
2015	6.5	7.8	*	15.2	13.2	24.7
2014	13.8	12.3	*	16.1	14.2	25.6
2013	10.8	12.7		18.2	15.6	30.8
2012	28.1	29.2	0.0	21.2	18.1	33.9
2011	27.5	20.3	0.0	22.4	18.9	36.5
2010	39.9	36.0	0.0	24.8	21.1	42.1
2009	27.6	28.3	0.0	29.6	22.4	55.5

Table 9: Drug Related Issues

Rate of Opioid Prescriptions-Number Per 1,000 persons

	Crockett Co	TN	US
2018	981.4	901.1	587.0
2017	1067.6		
2016	1264.9		
2015	1404.8		
2014	1402.2		

Source: Informatics & Analytics Centers for Disease Control & Prevention.

Number of drug related arrests for adults over 18 in Crockett County

2019	58
2018	26
2017	31
2016	24
2015	31
2014	35

Source: Tennessee Bureau of Investigation

Source: Tennessee Department of Mental Health and Substance Abuse
Services. Tennessee Behavioral Health County Data Book 2014

In addition to these issues COVID-19 data for Crockett County was reviewed as of August 23, 2021. Crockett County has experienced 2,720 positive cases. Of this figure, 36 have been hospitalized, 53 individuals have died, and 2,280 have recovered.

Priority Health Issues

Upon a review of survey responses and secondary data, four priority health issues were identified.

COVID-19

Chronic Health Conditions

Obesity

Mental Health and Substance Abuse Issues

Conclusion

The Crockett County Community Health Needs Assessment was presented to the West Tennessee Healthcare Quality Council on Tuesday September 21, 2021. The document was approved for submission to the West Tennessee Healthcare Board of Trustees and approved on October 26, 2021.

The Hospital Committee will reconvene in 2022 to collaborate with the Tennessee Department of Health County Health Council and will update this report with identified strategies.

This report is submitted as required in the Patient Protection and Affordable Care Act Pub.L.NO.111-148, 124 Stat. 119, enacted March 23, 2010, requiring updating every three years.

Crockett County Community Health Assessment
Update of Size of Health issues 2021-Update 2-2021
Prioritization of Health Issues

Population	14,230
Age 65 +	19.20%
Caucasian	82.70%
African American	14.10%
Latino	11.00%
High School Graduates	81.10%
B.S. Degree or Higher	13.00%
Disability< Age 65	14.10%
Median HH Income	\$42,047
PerCapita Income	\$22,050

Number Receiving Behavioral Safety Net Services

2015	2016	2017	2018	2019	2020
65	53	40	46	50	

Face to Face Crisis Service Assessments

160	121	143	155	144
-----	-----	-----	-----	-----

Source: Tennessee Department of Mental Health & Substance Abuse Services

Frequent mental distress 2014-2016-15 percent

Alcohol & Substance Use

Binge/Excessive Drinking-Percent who report in the past 30 days

	Crockett	TN
2020	13	14
2019	13	14
2018	13	14
2017	11	12
2016	11	12
2015		9
2014		9

Source: Robert Wood Johnson Foundation and University of Wisconsin Population Health Institute.

Rate of Opioid Prescriptions-Number Per 1,000 persons

	Crockett Co	TN	US
2018	981.4	901.1	587.0
2017	1067.6		
2016	1264.9		
2015	1404.8		
2014	1402.2		

Source: Informatics & Analytics Centers for Disease Control & Prevention.

Number of drug related arrests for adults over 18 in Crockett County

2019	58
2018	26
2017	31
2016	24
2015	31
2014	35

Source: Tennessee Bureau of Investigation

Source: Tennessee Department of Mental Health and Substance Abuse Services. Tennessee Behavioral Health County Data Book 2014

Allergies

1 in 5 Americans suffer from all types of allergies

Allergies have increased in prevalence since the 1980s across age, sex, racial groups.

19.2 million diagnosed with hay fever

Annual costs from allergies \$18 billion

Annual costs from food allergies \$25 billion

About 200,000 emergency room visits each year from food allergies

Approximately 50 million people experience allergies.

Allergies are the 6th leading chronic disease among all ages.

Source: Asthma and Allergy Foundation of America; Centers for Disease Control and Prevention

Arthritis, Rheumatoid Arthritis, Gout, Lupus, or Fibromyalgia?

Effects one in every 2 age 65+

3 of 5 have under age 65

Risk Factors

- women
- obesity
- age
- joint injuries
- genetic predisposition
- infections
- certain occupations

Asthma

*Number of adults aged 18 and over who currently have asthma: 19.2 million

*Percent of adults aged 18 and over who currently have asthma: 7.7%

*Number of children under age 18 years who currently have asthma: 5.5 million

*Percent of children under age 18 years who currently have asthma: 7.5%

*Number of physician office visits with asthma as a primary diagnosis: 9.8 million

*Number of emergency department visits with asthma as a primary diagnosis: 1.6 million

*Number of deaths: 3,524

*Deaths per 100,000 population: 1.1

*Asthma is a chronic inflammation of the lung airways that causes coughing, chest tightness, wheezing or shortness of breath

*8.3% of Americans have asthma. Of these 26.5 million, 20.4 million are adults and 6.1 million are children

*Asthma prevalence is higher in children (9.4 percent) than in adults (7.7 percent), and higher in females (9.2 percent) than males (7.0 percent)

*Patients with asthma reported 11 million visits to a doctor's office and 1.7 million visits to hospital outpatient departments

*Asthma results in 439,000 hospitalizations and 1.3 million emergency room visits annually.

*Asthma is the most common chronic illness in childhood, accounting for 13.8 million missed school days each year. It also accounts for 14.2 million lost work days for adults.

*The estimated economic cost of asthma is \$56 billion annually.

*More than 3,500 people die of asthma each year, nearly half of whom are age 65 or older

*Asthma symptoms can be triggered by exposure to an allergen

*Asthma is often hereditary.

*Weather conditions such as extremely dry, wet or windy weather can worsen asthma conditions

Source: Centers for Disease Control and Prevention.

Cancer

Deaths from Malignant Neoplasms Per 100,000

	Crockett				TN		
	Total	White	Black		Total	White	Black
2018	293.3	296.3	*		208.8	226.9	170.7
2017	276.3	258.6	*		212.8	230.6	173.1
2016	284.7	301.6	*		217.5	235.1	178.0
2015	205.4	222.5	*		214.8	229.5	170.4
2014	143.2	138.9	*		216.1	231.8	182.4
2013	247.0	294.1	0.0		214.5	231.0	176.4
2012	205.2	212.0	0.0		211.2	226.5	176.3
2011	268.1	277.1	0.0		210.2	224.6	180.1
2010	219.4	235.2	0.0		212.9	234.6	178.9
2009	223.2	188.9	0.0		216.2	226.9	183.5

Source: Tennessee Department of Health.

COPD, Ephysema, or Chronic Bronchitis

About 9.7 percent of Tennessee population have COPD.

Respondents were more likely to report COPD ($p < 0.05$) if they

- Were female.
- Were unable to work.
- Had not graduated from high school.
- Had a household income of \$25,000 or less.
- Had a history of smoking (current or former).
- Had a history of asthma.

Respondents were less likely to report COPD ($p < 0.05$) if they

- Were aged 44 years or younger.

- Were male.
- Had never smoked.
- Had no history of asthma.

Source: COPD Foundation; Centers for Disease Prevention and Control

Diabetes

Deaths from Diabetes per 100,000

	Crockett				TN		
	Total	White	Black		Total	White	Black
2018	14.0	8.5	*		29.9	29.4	38.0
2017	48.4	41.7	*		28.5	28.1	36.1
2016	55.5	58.6	*		28.4	27.5	37.3
2015	27.4	33.0	-		27.1	26.6	32.8
2014	34.1	32.7	*		26.3	25.8	33.5
2013	41.2	16.3	0.0		27.9	27.1	36.8
2012	47.9	57.1	0.0		28.2	27.4	36.7
2011	34.4	24.5	0.0		27.1	26.3	35.7
2010	27.4	34.8	0.0		26.4	26.4	35.0
2009	33.8	39.4	0.0		28.2	26.8	37.7

Source: Tennessee Department of Health.

Percentage of Population Diagnosed with Diabetes

	Crockett	TN
2020	12	13
2019	13	13
2018	13	13
2017	14	13
2016	13	12
2015	14	12
2014	13	11

Source: Robert Wood Johnson Foundation and University of Wisconsin

Dental Care

Tennessee ranks 38th for dental care. Oral cancer from tobacco use accounts for 75 to 90 percent of oral cancer. About 22 percent of adults and 10 percent of children smoke in Tennessee.

People do not visit a dentist because of cost (70%) and fear (25%).

Crockett County is Federal Health Professional Shortage Area for Dental Care

ID= 6479684047 Low Income Population; Single County Score = 17 Non-Rural #47033

Financial Resources

Children in Poverty-Percent of children under 18 in poverty

	Crockett	Rank in TN
2019	24.8	52

Source: 2017 Tennessee Commission on Children and Youth, Kids Count

Uninsured Adults-Percent Population Under Age 65 without health insurance

	Crockett	TN
2020	18	14
2019	17	13
2018	15	12
2017	18	14
2016	20	16
2015	19	16
2014	19	17

Percent Children Living in Single-Parent households

	Crockett	TN
2020	39	35
2019	35	35
2018	33	36
2017	36	36
2016	31	36
2015	38	36
2014	45	35

Source: Robert Wood Johnson Foundation and University of Wisconsin Population Health Institute.

Source: Tennessee Department of Health. Behavioral Risk Factor Surveillance System.

All People in Poverty-Percent

	Crockett	US
2020	19.4	10.5

Source: County and City QuickFacts.

Unemployment

	Crockett	TN	US
Nov-20	4.5	5.3	6.7
Nov-19	3.2	3.3	3.5
2017	3.4	3.2	4.1
2016	5.7	5.1	4.7
2015	6.5	5.6	5
2014	7.3	6.6	5.6

Source: Tennessee Department of Labor & Workforce Development

Heart Conditions**Death from Diseases of the Heart Per 100,000**

Rate

	Crockett				TN		
	Total	White	Black		Total	White	Black
2018	447.0	474.0	*		242.5	263.2	199.7
2017	545.7	567.3	*		238.4	259.5	193.8

2016	388.8	393.8	*	232.1	249.9	196.8
2015	527.2	585.1	*	237.5	252.8	190.1
2014	402.5	457.7	*	232.0	250.8	189.3
2013	466.5	498.4	0.0	226.7	245.1	183.1
2012	355.7	309.8	0.0	220.6	241.2	165.2
2011	439.9	440.1	0.0	221.0	239.7	175.3
2010	431.9	418.2	0.0	228.3	254.0	181.8
2009	493.7	495.9	0.0	228.0	241.1	185.8

Source: Tennessee Department of Health.

High Blood Pressure

Deaths from Cerebrovascular Disease per 100,000

RATE

	Crockett				TN		
	Total	White	Black		Total	White	Black
2018	41.9	33.9	*		51.7	54.5	49.9
2017	62.2	58.4	*		52.4	55.2	50.1
2016	69.4	75.4	*		52.8	55.1	52.6
2015	61.6	74.2	-		52.2	53.9	49.8
2014	34.1	32.7	-		50.7	53.1	48.4
2013	48.0	57.2	0.0		48.1	50.5	45.8
2012	41.0	32.6	0.0		46.3	48.6	42.9
2011	75.6	81.5	0.0		50.1	52.8	46.2
2010	48.0	52.3	0.0		50.1	54.3	45.6
2009	60.9	63.0	0.0		50.6	51.9	48.2

Source: Tennessee Department of Health.

Influenza in rural West Tennessee

Flu Vaccine Rates: Elderly

	Crockett Co	TN	US
2018	46.0%	47.37%	45.99%
2017	45.7%		
2016	52.4%		
2015	53.3%		
2014	54.4%		

Source: US Department of Health & Human Services

Obesity

Percent of Adults who have a body mass index greater than 25-overweight or obese

	Crockett	TN
2020	40	33
2019	34	33
2018	29	32
2017	33	32
2016	35	32

2015	36	32
2014	35	32
2013	34	32
2012	34	32
2011	33	31
2010	30	31

Source: Robert Wood Johnson Foundation and University of Wisconsin

Youth Obesity

	Crockett Co	TN
2017	44.3%	
2016	47.9%	39.2%
2015	48.4%	
2014	48.5%	

Source: Coordinated School Health.

Physical Activity

	Crockett Co	TN	US
2018			75.4%
2017		69.4%	
2016	68.3%		
2015	66.6%		
2014	67.0%		

Source: Behavioral Risk Survey. Percentage of adults reporting physical activity-past 30 da

Pregnancies Age 10-17 per 1,000 Females

	Crockett			TN		
	Total	White	Black	Total	White	Black
2018	7.5	9.6	*	4.6	3.7	8.8
2017	7.3	7.8	8.3	4.9	4.1	8.7
2016	3.8	3.3	8.4	5.4	4.5	9.7
2015	2.3	2.9	*	6.0	5.1	10.2
2014	5.9	5.8	8.9	6.3	5.5	10.7
2013	5.0	6.1	*	7.2	6.0	12.0
2012	9.8	10.3	9.3	8.3	7.0	14.0
2011	9.6	7.1	30.0	8.9	7.3	15.5
2010	15.7	14.4	39.6	10.0	8.3	17.9
2009	13.4	10.0	9.4	12.0	9.1	21.9

Pregnancies Age 15-17 Per 1,000 Females

	Crockett			TN		
	Total	White	Black	Total	White	Black
2018	17.9	23.9	*	11.6	9.5	21.6
2017	21.3	*	*	12.4	10.5	21.4
2016	10.8	*	*	13.7	11.5	23.6
2015	6.5	7.8	*	15.2	13.2	24.7

2014	13.8	12.3	*	16.1	14.2	25.6
2013	10.8	12.7		18.2	15.6	30.8
2012	28.1	29.2	0.0	21.2	18.1	33.9
2011	27.5	20.3	0.0	22.4	18.9	36.5
2010	39.9	36.0	0.0	24.8	21.1	42.1
2009	27.6	28.3	0.0	29.6	22.4	55.5

Adult Smoking-Percent of Adults that report smoking at least 100 cigarettes

	Crockett	TN
2020	23	23
2019	24	22
2018	24	22
2017	24	22
2016	24	24
2015	27	23
2014	27	23

Source: Robert Wood Johnson Foundation and University of Wisconsin Population Health Institute.

Dementia/Alzheimer's Disease

Source: Tennessee Department of Health.

Over 5 million Americans are living with Alzheimers Disease-110,000 in Tennessee
Tennessee in 2014 16,000 adults ages 65-74 living with Alzheimers
Tennessee in 2014 47,000 adults ages 75-84 living with Alzheimers
Tennessee in 2014 41,000 adults ages 85+ living with Alzheimers
Alzheimers is the 5th leading cause of death in the United States.
138 percent increase in Alzheimers deaths since 2000

Hearing Loss

Almost 50 million Americans have hearing loss in at least one ear, including 1 in 5 teenagers.
Ringing in the ears (tinnitus) affects 20 percent of Americans, and hearing loss occurs in 90 percent of those cases
60 percent of veterans returning from Iraq and Afganistan come home with hearing loss and tinnitus
More than 90 percent of deaf children are born to hearing parents
15 percent of American adults (37.5 million) age 18 and over report trouble hearing
Those with even mild hearing loss are twice a likely to develop dementia
Depression and isolation are common with hearing loss.
Men are more likely than women to experience eharing loss.
Tinnitus is sometimes the first sign of hearing loss. (10 percent of Americans)
Hearing loss becomes prevalent with age; hearing impairment occurs in about 18 percent of American adults between the ages of 45 and 54; 30 percent of adults between ages 65 and 74; and 47 percent of adults age 75 and older.

Domestic Violence

Domestic Violence Offenses
Crockett County Sheriff's Office

	Reported	Cleared
2019	59	31

2018	49	38
2017	57	44
2016	60	38
2015	53	38
2014	63	53

Alamo Police Department

2019	39	24
2018	16	11
2017	28	27
2016	11	11
2015	19	19
2014	30	26

Bells Police Department

2019	17	12
2018	26	22
2017	16	13
2016	22	19
2015	30	23
2014	24	13

Source: Tennessee Bureau of Investigation. Crime in Tennessee

Child Abuse

Number and rate of substantiated child abuse/neglect cases under age 18 and rate per 1,000 age 0-18

	Crockett	TN
Cy2013	20/5.8	4.9
Cy2012	<5/.9	4.9
Cy2011	18/*	4.8

Source: Tennessee Department of Mental Health and Substance Abuse Services. Tennessee Behavioral Health County Data Book 2014

Child Abuse & Neglect in Tennessee

	Crockett	TN
2019	4.2	4.9
2017	4.7	4.9
2016	4.0	4.8
2014	4.0	4.5
2012	6.8	4.9
2010	3.6	5.5
2009	4.2	7.0
2008	3.7	8.4
2007	4.8	11.6
2006	1.5	11.7

Source: Tennessee Commission on Children and Youth: KIDS COUNT: The State of the Child in Tennessee.

Motor Vehicle Accidents

Deaths from Motor Vehicle Accidents Per 100,000

	Crockett				TN		
	Total	White	Black		Total	White	Black
2018	55.9	67.7	*		16.4	16.6	19.2
2017	20.7	25	*		16.1	17.1	14.2
2016	13.9	16.8	*		16.5	17.0	16.2
2015	27.4	33.0	*		14.7	14.3	13.1
2014	34.1	32.7	—		15.1	16.2	13
2013	20.6	24.5	0.0		15.5	16.5	13.9
2012	20.5	16.3	0.0		14.8	16.1	10.7
2011	41.2	48.9	0.0		15.6	16.7	13.0
2010	6.9	8.7	0.0		16.8	18.8	11.5
2009	0.0	0.0	0.0		16.4	17.1	13.6

Source: Tennessee Department of Health.

**Overall Traffic Crash Data
Crockett County**

	Fatal	Injury	PDO	Total
2019	3	55	149	207
2018	6	58	192	255
2017	2	47	154	203
2016	2	72	193	267
2015	2	73	182	257
2014	2	70	171	243
2013	3	74	142	219
2012	4	66	127	197
2011	3	79	142	224
2010	2	101	113	216
2009	6	86	109	201
2008	4	73	115	192

Crash Rates Per 1,000 Licensed Drivers

	2013	08-13 Av	2014	2015
Licensed Drivers	10,132	10,101	10,200	10,037
Fatal Crash Rate	0.296	0.363	0.196	0.199
Rank	28	15	58	55
Injury Crash Rate	7.304	7.902	6.863	7.273
Rank	52	58	59	58
Overall Crash Rate	21.615	20.604	23.824	25.605
Rank	67	79	65	64

Crockett County Alcohol Impaired Crashes Per 100,000

Crashes	
2020	8
2019	14
2018	18
2017	14
2016	27
2015	13
2014	17
2013	13
2012	9
2011	9
2010	12

Source: Tennessee Department of Safety and Homeland Security.

Summary of Health Issues-2021 Community Health Needs Assessment Secondary Data

← Indicator Higher for the County than the State of Tennessee

County	Cancer Deaths	Heart Disease	Children in Poverty	Uninsured Population	Persons in Poverty	Obesity	Teen Pregnancy	Tobacco Use	Cerebrovascular Deaths	Diabetes Deaths	Excessive Drinking	Teen Pregnancy	Drug-Related Issues	Diabetes Diagnosed	Motor Vehicle Accidents
DeKalb	X	X	X	X		X		X	X	X		X			
Douglas		X			X	X				X	X		X	X	
Fulton	X	X		X	X	X		X		X		X	X		X
Gwinnett	X	X				X				X					
Henry	X	X	X	X		X		X	X	X			X	X	
Jefferson	X	X				X				X					
Kent	X	X	X			X			X	X			X	X	
Madison		X	X			X			X	X			X		
Spalding	X	X	X			X			X	X			X	X	
Stewart	X	X				X			X	X			X		
Thomas	X	X				X			X	X			X		
Walton	X	X				X			X	X			X		



Community Health Assessment Survey

West Tennessee Healthcare



We would like you to help us identify current health and well being issues facing rural West Tennessee counties. Your responses will be confidential. This survey will take between 3-5 minutes.

Please answer the following questions by selecting the response that best describes you. Darken or fill in the circle for each response.

1. Age

- ☐ 18-24 ☐ 25-35 ☐ 36-50 ☐ 51-64 ☐ 65+

2. Education

- ☐ Less than high school ☐ High school graduate/GED ☐ Some college
☐ Associate degree ☐ Bachelor degree ☐ Advanced degree

3. Employment Status

- ☐ Employed full time ☐ Employed part time
☐ Homemaker full time ☐ Not working because of acute illness or injury
☐ Permanently disabled ☐ Retired
☐ Student full time ☐ Student part time

4. Gender

- ☐ Female
☐ Male
☐ Trans Female (Male to Female)
☐ Trans Male (Female to Male)
☐ Gender Non-conforming (i.e. not exclusively male or female)

5. Insurance

- ☐ Medicare ☐ No insurance
☐ Obamacare (Affordable Healthcare) ☐ Private insurance
☐ TennCare ☐ Other

6. County of Residence

- | | | | | |
|----------------------------------|--------------------------------|---------------------------------|-------------------------------|------------------------------|
| <input type="radio"/> Benton | <input type="radio"/> Chester | <input type="radio"/> Crockett | <input type="radio"/> Dyer | <input type="radio"/> Gibson |
| <input type="radio"/> Hardeman | <input type="radio"/> Haywood | <input type="radio"/> Madison | <input type="radio"/> Weakley | <input type="radio"/> Benton |
| <input type="radio"/> Carroll | <input type="radio"/> Chester | <input type="radio"/> Crockett | <input type="radio"/> Decatur | <input type="radio"/> Dyer |
| <input type="radio"/> Gibson | <input type="radio"/> Hardeman | <input type="radio"/> Hardin | <input type="radio"/> Haywood | <input type="radio"/> Henry |
| <input type="radio"/> Lauderdale | <input type="radio"/> Madison | <input type="radio"/> McNairy | <input type="radio"/> Obion | <input type="radio"/> Shelby |
| <input type="radio"/> Weakley | <input type="radio"/> Lake | <input type="radio"/> Henderson | | |



Community Health Assessment Survey

West Tennessee Healthcare

7. Race

- ☐ African/American
 ☐ American Indian/Alaskan Native
☐ Asian
 ☐ Caucasian
☐ Hispanic/Latino
 ☐ Indian (from India or parents from India)
☐ Middle Eastern
 ☐ Pacific Islander/Polynesian
☐ Other
 ☐ Not sure

8. Weight

- ☐ Just right
 ☐ Obese
 ☐ Overweight
 ☐ Underweight

For the following questions, indicate if you have experienced the health issue by selecting Yes or No.

Response Definition: Y=Yes N=No

- | | Y | N |
|--|-----------------------|-----------------------|
| 9. Have you had (or do you currently have) Allergies? | <input type="radio"/> | <input type="radio"/> |
| 10. Have you had (or do you currently have) Arthritis? | <input type="radio"/> | <input type="radio"/> |
| 11. Have you had (or do you currently have) Asthma? | <input type="radio"/> | <input type="radio"/> |
| 12. Have you had (or do you currently have) an Autoimmune disease? | <input type="radio"/> | <input type="radio"/> |
| 13. Have you had (or do you currently experiencing) Bullying? | <input type="radio"/> | <input type="radio"/> |
| 14. Have you had (or do you currently have) Chronic Pain? | <input type="radio"/> | <input type="radio"/> |
| 15. Have you had (or do you currently have) Dementia/Alzheimer's? | <input type="radio"/> | <input type="radio"/> |
| 16. Have you had (or do you currently have) Diabetes? | <input type="radio"/> | <input type="radio"/> |
| 17. Have you had (or do you currently have) Emphysema/COPD? | <input type="radio"/> | <input type="radio"/> |
| 18. Have you had (or do you currently have) an Eye Condition (cataracts, glaucoma, macular degeneration)? | <input type="radio"/> | <input type="radio"/> |
| 19. Have you had (or do you currently have) a Fall or Fall related injury? | <input type="radio"/> | <input type="radio"/> |
| 20. Have you had (or do you currently have) Hearing Loss/Deafness? | <input type="radio"/> | <input type="radio"/> |
| 21. Have you had (or do you currently have) High Blood Pressure? | <input type="radio"/> | <input type="radio"/> |
| 22. Have you had (or do you currently have) Osteoporosis? | <input type="radio"/> | <input type="radio"/> |
| 23. Have you had (or do you currently have) a Heart Condition? | <input type="radio"/> | <input type="radio"/> |
| 24. Have you had (or do you currently have) high levels of Stress? | <input type="radio"/> | <input type="radio"/> |
| 25. Have you had a Stroke? | <input type="radio"/> | <input type="radio"/> |

Have you experienced a lack of financial resources that led to problems accessing any of the following:

- | | Y | N |
|------------------|-----------------------|-----------------------|
| 26. Dental care | <input type="radio"/> | <input type="radio"/> |
| 27. Medical care | <input type="radio"/> | <input type="radio"/> |
| 28. Medications | <input type="radio"/> | <input type="radio"/> |

Community Health Assessment Survey

West Tennessee Healthcare

Have you experienced a lack of transportation that led to problems accessing any of the following

- | | Y | N |
|---|-----------------------|-----------------------|
| 29. Dental care | <input type="radio"/> | <input type="radio"/> |
| 30. Medical care | <input type="radio"/> | <input type="radio"/> |
| 31. Medications | <input type="radio"/> | <input type="radio"/> |
| 32. Do you have access to Healthy Foods (fresh fruits & vegetables, lean meats, whole grain products, low fat milk products) | <input type="radio"/> | <input type="radio"/> |
| 33. How far must you travel to access Healthy Foods listed above? | | |
| <input type="radio"/> less than one mile | <input type="radio"/> | <input type="radio"/> |
| <input type="radio"/> over three miles to five miles | <input type="radio"/> | <input type="radio"/> |
| <input type="radio"/> over ten miles | | |
| <input type="radio"/> over one mile to three miles | | |
| <input type="radio"/> over five miles to ten miles | | |
| 34. Do you have access to Information/Education about your health issues, if any? | <input type="radio"/> | <input type="radio"/> |
| 35. Do you have access to Child or Adult Care ? | <input type="radio"/> | <input type="radio"/> |
| 36. Do you have access to facilities or places for Physical Activity ? | <input type="radio"/> | <input type="radio"/> |
| 37. Do you have a family history of: | | |
| <input type="radio"/> suicide | <input type="radio"/> | <input type="radio"/> |
| <input type="radio"/> heart failure | <input type="radio"/> | <input type="radio"/> |
| <input type="radio"/> opioid use | <input type="radio"/> | <input type="radio"/> |
| 38. Have you or family member had the COVID-19 vaccine? | <input type="radio"/> | <input type="radio"/> |
| 39. Have you or family member had COVID-19? | <input type="radio"/> | <input type="radio"/> |

The following questions ask about difficult situations that may cause you to feel upset..if so please talk with someone you consider safe or contact a health professional or counselor.

Prior to your 18th birthday, did you experience and of the following?

- | | Y | N |
|---|-----------------------|-----------------------|
| 40. Did a parent or other adult in the household often swear at you, insult you, put you down or humiliate you? OR act in a way that made you afraid that you might be physically harmed? | <input type="radio"/> | <input type="radio"/> |
| 41. Did an adult or person at least 5 years older than you ever touch or fondle you or have you touch their body in a sexual way? OR try to have oral, anal, or vaginal sex with you? | <input type="radio"/> | <input type="radio"/> |
| 42. Did you often feel that no one in your family loved you or thought you were important or special? OR Your family didn't look out for each other, feel close to each other, or support each other? | <input type="radio"/> | <input type="radio"/> |
| 43. Did a parent or other adult in the household often push, grab, slap, or throw something at you? OR ever hit you so hard that you had marks or were injured? | <input type="radio"/> | <input type="radio"/> |
| 44. Were your parents ever separated or divorced? | <input type="radio"/> | <input type="radio"/> |



Community Health Assessment Survey

West Tennessee Healthcare



45. Was your mother or stepmother often pushed, grabbed, slapped or had something thrown at her? OR sometimes or often kicked, bitten, hit with a fist, or hit with something hard? OR ever repeatedly hit or at least a few minutes or threatened with a gun or knife? Y N
○ ○
46. Did you live with anyone who was a problem drinker or alcoholic or used street drugs? ○ ○
47. Was a household member depressed or mentally ill or did a household member ever attempt suicide? ○ ○
48. Did a household member ever go to prison? ○ ○
49. Did you often feel that you didn't have enough to eat, had to wear dirty clothes, or had no one to protect you? OR your parents were too drunk or high to take care of you or take you to the doctor if you needed it? ○ ○



Community Needs Assessment Results

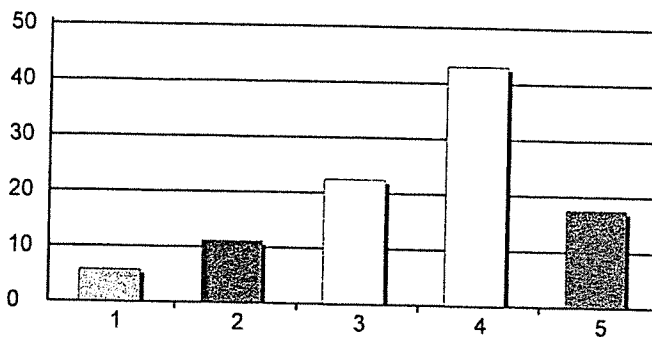
May 2, 2021

Creation Date: 5/2/2021

Time Interval: 3/28/2021 to 5/2/2021

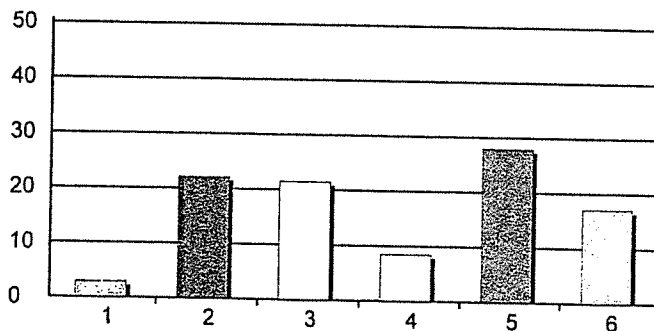
Total Respondents: 1895

1. Age



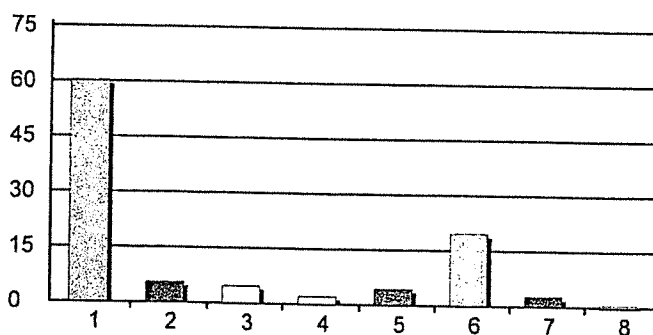
1. 18-24	109	6%
2. 25-35	211	11%
3. 36-50	423	22%
4. 51-64	811	43%
5. 65+	331	18%
Total Responses:	1885	
Mean: 3.55	Standard Deviation: 1.08	

2. Education



1. Less than high school	53	3%
2. High school graduate/GED	409	22%
3. Some college	396	21%
4. Associate degree	156	8%
5. Bachelor degree	516	28%
6. Advanced degree	316	17%
Total Responses:	1846	

3. Employment Status

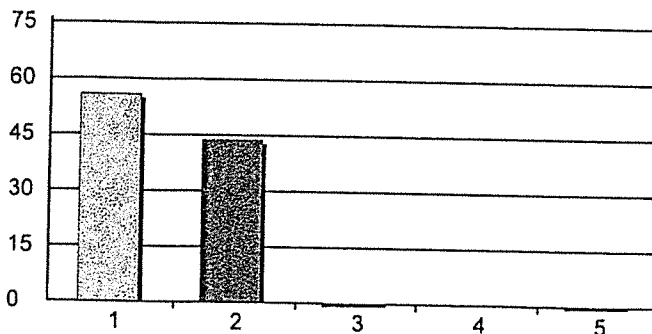


1. Employed full time	1090	60%
2. Employed part time	101	6%
3. Homemaker full time	84	5%
4. Not working because of acute illness or injury	38	2%
5. Permanently disabled	80	4%
6. Retired	357	20%
7. Student full time	51	3%
8. Student part time	10	1%
Total Responses:	1811	

Community Needs Assessment Results

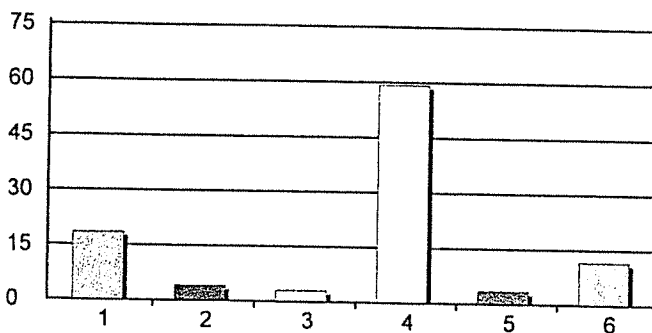
May 2, 2021

4. Gender



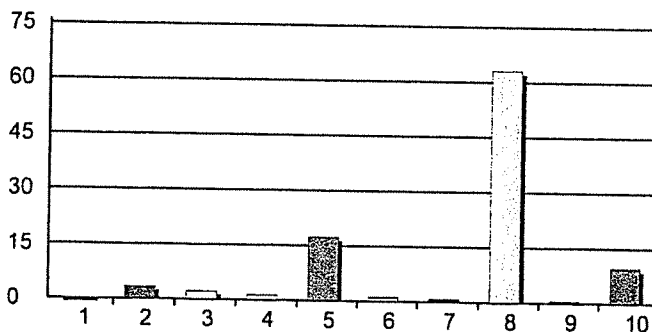
1. Female	1048	56%
2. Male	821	44%
3. Trans Female (Male to Female)	2	0%
4. Trans Male (Female to Male)	0	0%
5. Gender Non-conforming (i.e. not exclusively m...	4	0%
Total Responses:	1875	
Mean: 1.45 Standard Deviation: 0.52		

5. Insurance



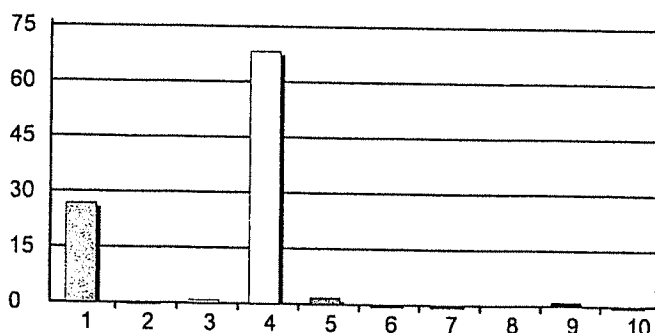
1. Medicare	338	19%
2. No insurance	75	4%
3. Obamacare (Affordable Healthcare)	54	3%
4. Private insurance	1081	59%
5. TennCare	65	4%
6. Other	213	12%
Total Responses:	1826	

6. County of Residence



1. Benton	2	0%
2. Chester	64	3%
3. Crockett	42	2%
4. Dyer	25	1%
5. Gibson	328	17%
6. Hardeman	22	1%
7. Haywood	17	1%
8. Madison	1192	63%
9. Weakley	13	1%
10. Other	183	10%
Total Responses:	1888	
Mean: 7.27 Standard Deviation: 1.88		

7. Race

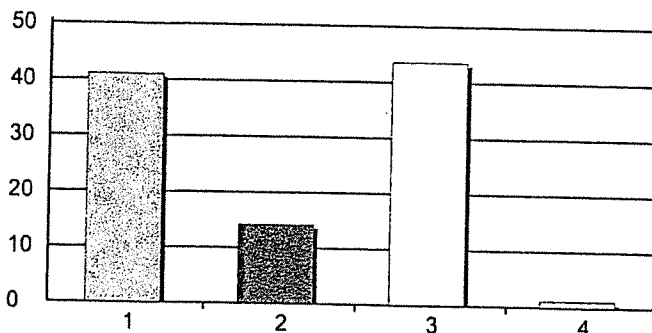


1. African/American	490	27%
2. American Indian/Alaskan Native	7	0%
3. Asian	16	1%
4. Caucasian	1248	68%
5. Hispanic/Latino	33	2%
6. Indian (from India or parents from India)	4	0%
7. Middle Eastern	4	0%
8. Pacific Islander/Polynesian	0	0%
9. Other	23	1%
10. Not sure	5	0%
Total Responses:	1830	

Community Needs Assessment Results

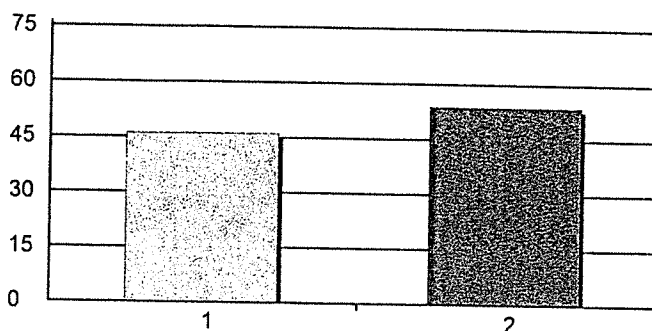
May 2, 2021

8. Weight



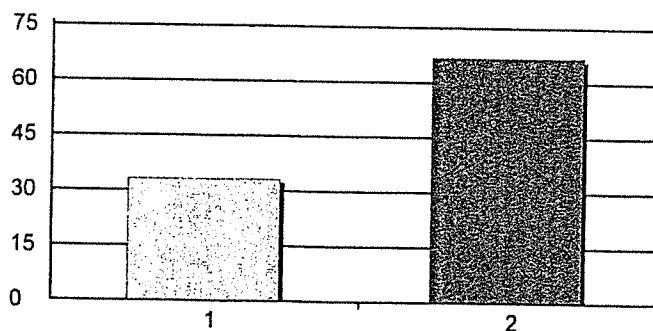
1. Just right	659	41%
2. Obese	229	14%
3. Overweight	699	44%
4. Underweight	18	1%
Total Responses:	1605	

9. Have you had (or do you currently have) Allergies?



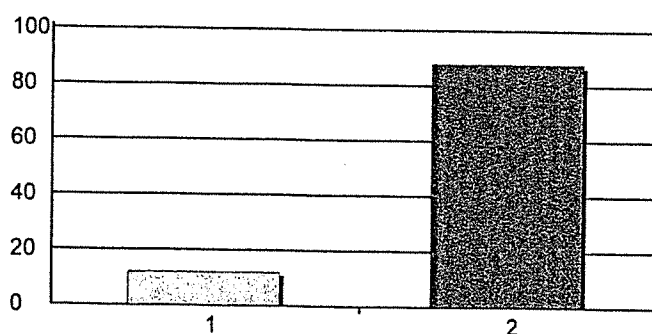
1. Yes	865	46%
2. No	1011	54%
Total Responses:	1876	
Mean: 1.54	Standard Deviation: 0.50	

10. Have you had (or do you currently have) Arthritis?



1. Yes	621	33%
2. No	1250	67%
Total Responses:	1871	
Mean: 1.67	Standard Deviation: 0.47	

11. Have you had (or do you currently have) Asthma?

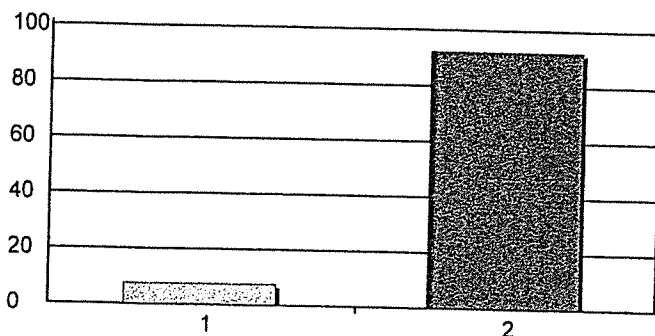


1. Yes	226	12%
2. No	1654	88%
Total Responses:	1880	
Mean: 1.88	Standard Deviation: 0.33	

Community Needs Assessment Results

May 2, 2021

12. Have you had (or do you currently have) an **Autoimmune disease**?



1. Yes

2. No

Total Responses:

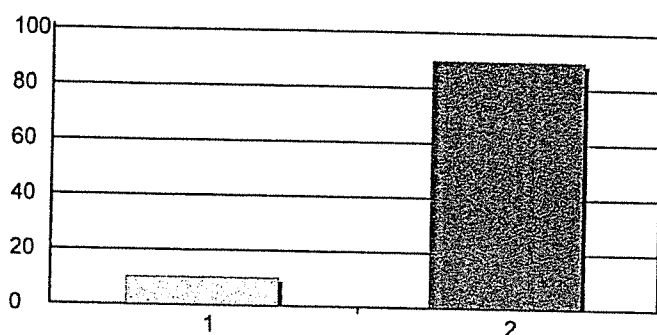
Mean: 1.92 Standard Deviation: 0.26

141 8%

1729 92%

1870

13. Have you had (or do you currently experiencing) **Bullying**?



1. Yes

2. No

Total Responses:

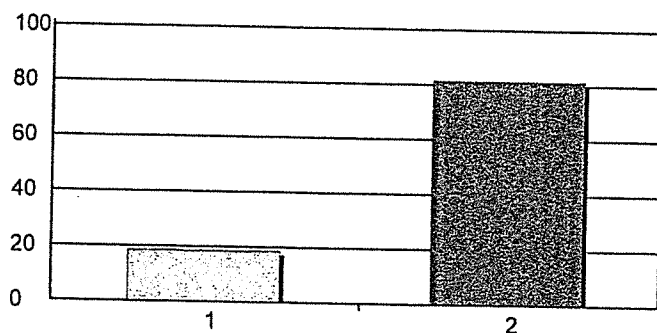
Mean: 1.90 Standard Deviation: 0.30

188 10%

1679 90%

1867

14. Have you had (or do you currently have) **Chronic Pain**?



1. Yes

2. No

Total Responses:

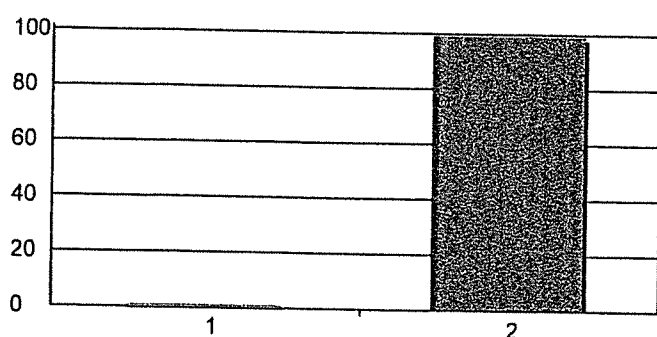
Mean: 1.82 Standard Deviation: 0.39

347 18%

1532 82%

1879

15. Have you had (or do you currently have) **Dementia/Alzheimer's**?



1. Yes

2. No

Total Responses:

Mean: 1.99 Standard Deviation: 0.09

15 1%

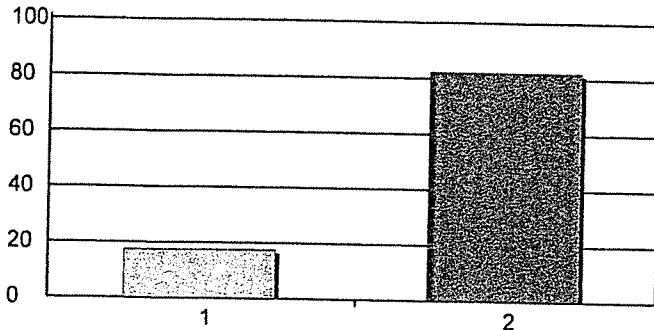
1859 99%

1874

Community Needs Assessment Results

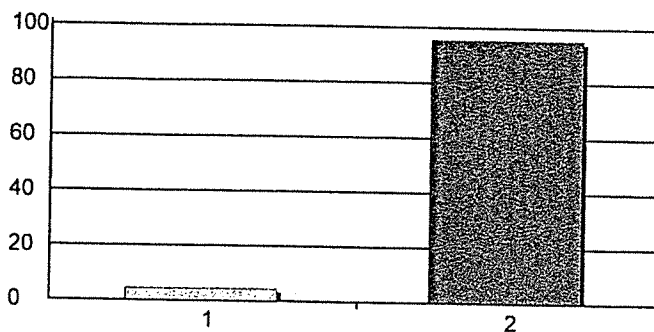
May 2, 2021

16. Have you had (or do you currently have) Diabetes?



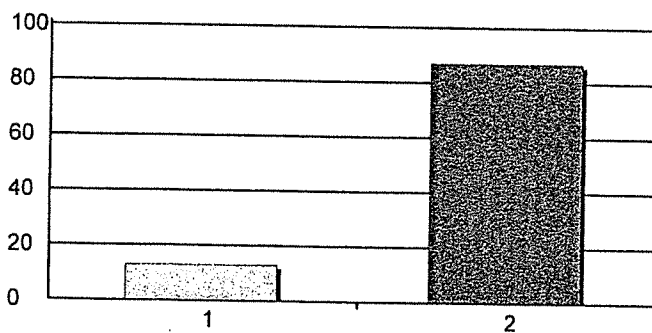
1. Yes 329 18%
 2. No 1544 82%
 Total Responses: 1873
 Mean: 1.82 Standard Deviation: 0.38

17. Have you had (or do you currently have) Emphysema/COPD?



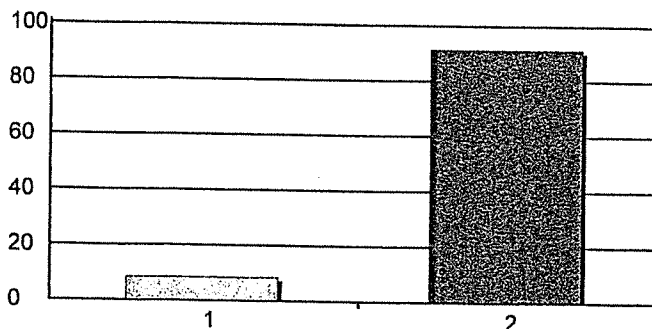
1. Yes 83 4%
 2. No 1787 96%
 Total Responses: 1870
 Mean: 1.96 Standard Deviation: 0.21

18. Have you had (or do you currently have) an Eye Condition (cataracts, glaucoma, macular degeneration)?



1. Yes 243 13%
 2. No 1631 87%
 Total Responses: 1874
 Mean: 1.87 Standard Deviation: 0.34

19. Have you had (or do you currently have) a Fall or Fall related injury?

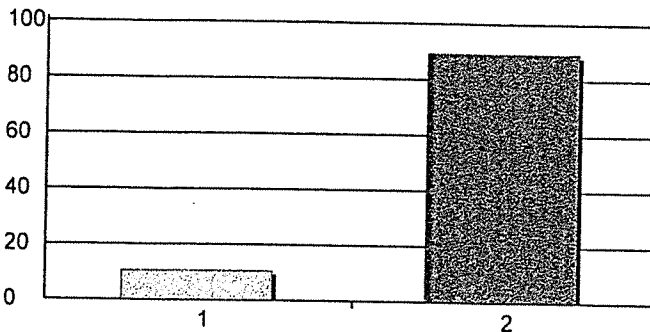


1. Yes 159 8%
 2. No 1720 92%
 Total Responses: 1879
 Mean: 1.92 Standard Deviation: 0.28

Community Needs Assessment Results

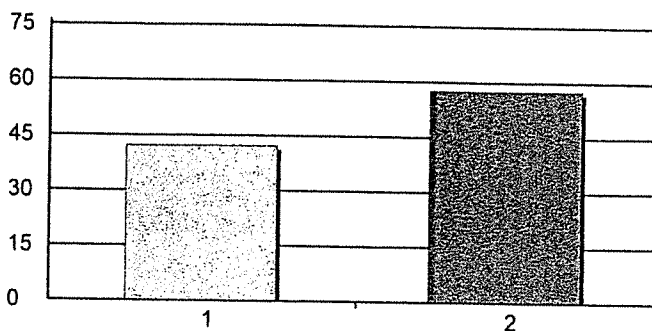
May 2, 2021

20. Have you had (or do you currently have) **Hearing Loss/Deafness**?



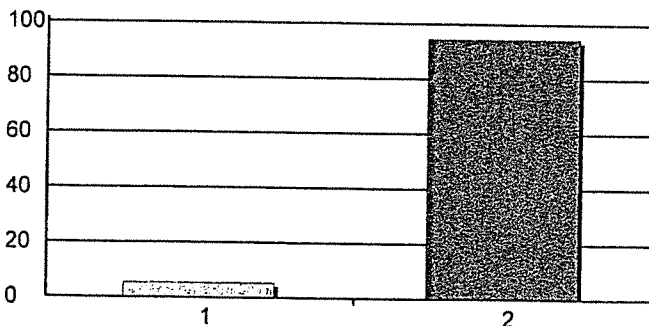
1. Yes 199 11%
 2. No 1676 89%
 Total Responses: 1875
 Mean: 1.89 Standard Deviation: 0.31

21. Have you had (or do you currently have) **High Blood Pressure**?



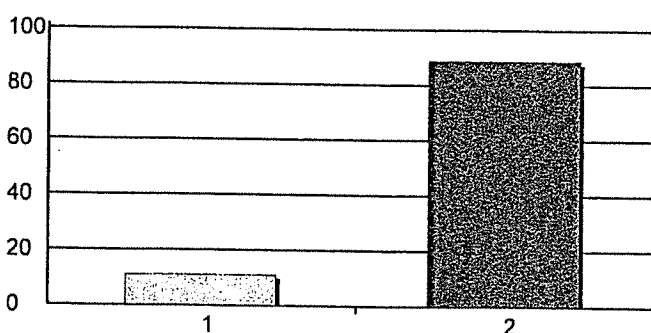
1. Yes 790 42%
 2. No 1078 58%
 Total Responses: 1868
 Mean: 1.58 Standard Deviation: 0.49

22. Have you had (or do you currently have) **Osteoporosis**?



1. Yes 101 5%
 2. No 1770 95%
 Total Responses: 1871
 Mean: 1.95 Standard Deviation: 0.23

23. Have you had (or do you currently have) a **Heart Condition**?

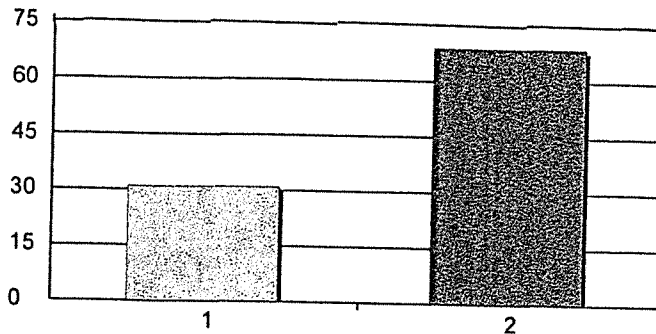


1. Yes 208 11%
 2. No 1665 89%
 Total Responses: 1873
 Mean: 1.89 Standard Deviation: 0.31

Community Needs Assessment Results

May 2, 2021

24. Have you had (or do you currently have) high levels of Stress?



1. Yes

581 31%

2. No

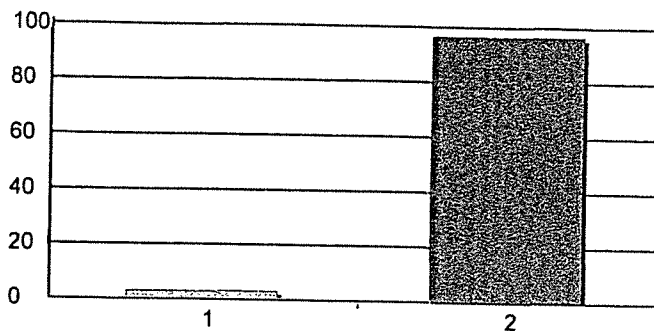
1293 69%

Total Responses:

1874

Mean: 1.69 Standard Deviation: 0.46

25. Have you had a Stroke?



1. Yes

62 3%

2. No

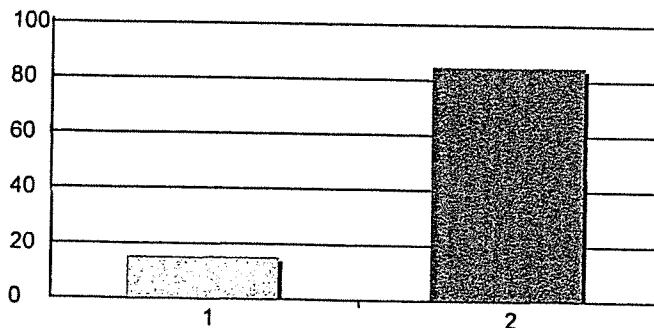
1806 97%

Total Responses:

1868

Mean: 1.97 Standard Deviation: 0.18

26. Lack of financial resources for: Dental care



1. Yes

279 15%

2. No

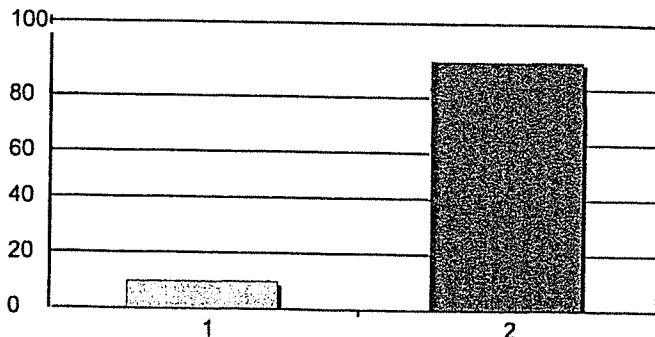
1585 85%

Total Responses:

1864

Mean: 1.85 Standard Deviation: 0.36

27. Lack of financial resources for: Medical care



1. Yes

185 10%

2. No

1673 90%

Total Responses:

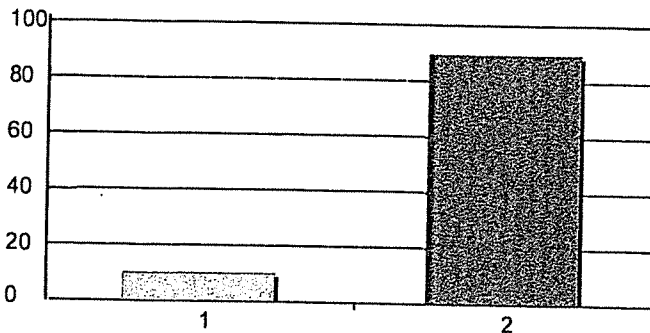
1858

Mean: 1.90 Standard Deviation: 0.30

Community Needs Assessment Results

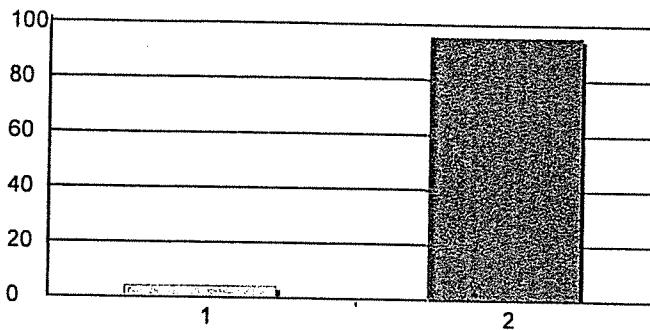
May 2, 2021

28. Lack of financial resources for: Medications



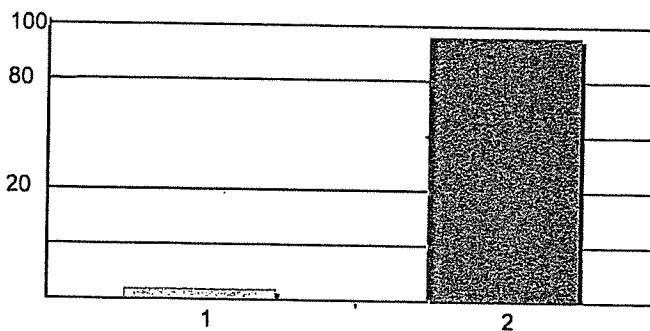
1. Yes 189 10%
 2. No 1664 90%
 Total Responses: 1853
 Mean: 1.90 Standard Deviation: 0.30

29. Lack transportationDental care



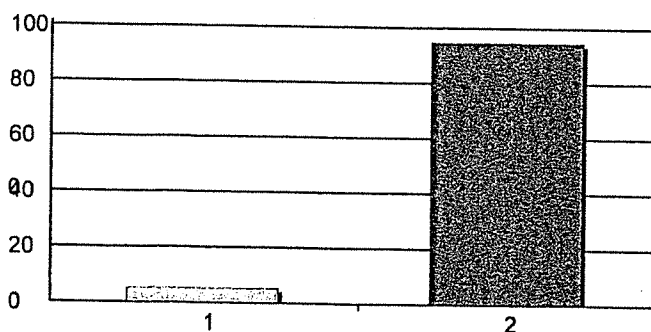
1. Yes 82 4%
 2. No 1774 96%
 Total Responses: 1856
 Mean: 1.96 Standard Deviation: 0.21

30. Lack transportation: Medical care



1. Yes 72 4%
 2. No 1781 96%
 Total Responses: 1853
 Mean: 1.96 Standard Deviation: 0.19

31. Lack transportation: Medications

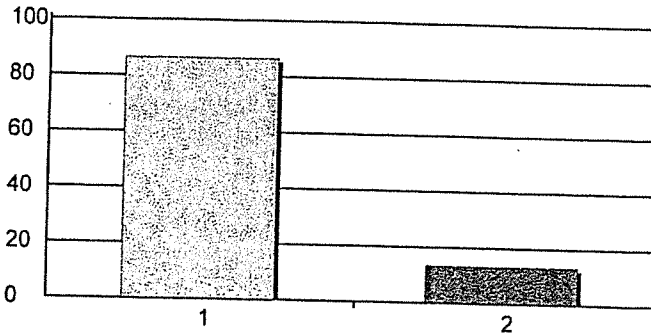


1. Yes 96 5%
 2. No 1734 95%
 Total Responses: 1830
 Mean: 1.95 Standard Deviation: 0.22

Community Needs Assessment Results

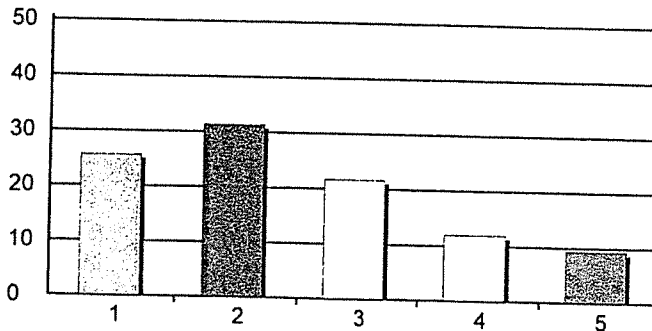
May 2, 2021

32. Do you have access to **Healthy Foods** (fresh fruits & vegetables, lean meats, whole grain products, low fat milk products)



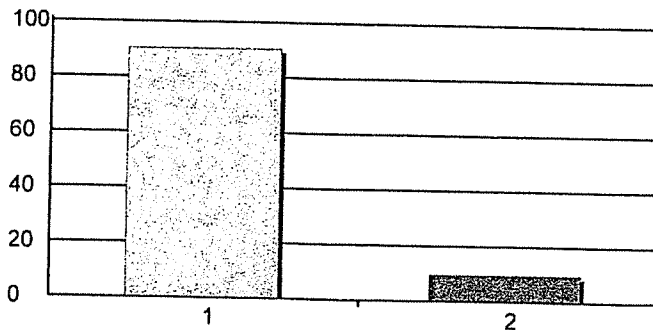
1. Yes 1510 86%
 2. No 236 14%
 Total Responses: 1746
 Mean: 1.14 Standard Deviation: 0.34

33. Mileage How far must you travel to access Healthy Foods?



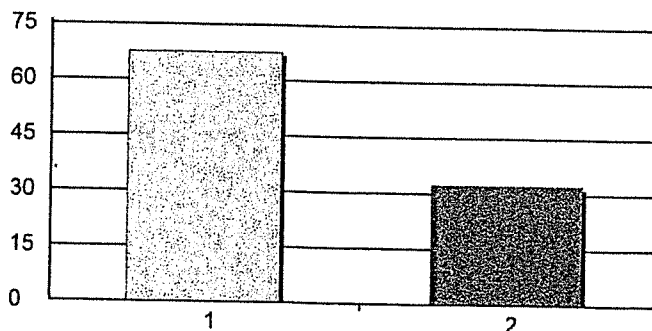
1. less than one mile 450 26%
 2. over one mile to three miles 550 31%
 3. over three miles to five miles 379 22%
 4. over five miles to ten miles 210 12%
 5. over ten miles 164 9%
 Total Responses: 1753
 Mean: 2.48 Standard Deviation: 1.25

34. Mileage Do you have access to information about your health issues?



1. Yes 1665 90%
 2. No 177 10%
 Total Responses: 1842
 Mean: 1.10 Standard Deviation: 0.29

35. Mileage Do you have access to Adult or Child Care?

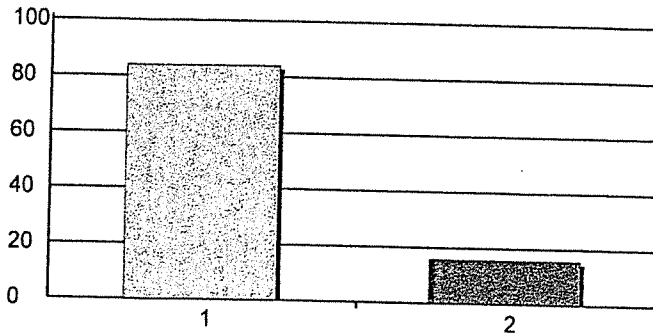


1. Yes 1181 68%
 2. No 566 32%
 Total Responses: 1747
 Mean: 1.32 Standard Deviation: 0.47

Community Needs Assessment Results

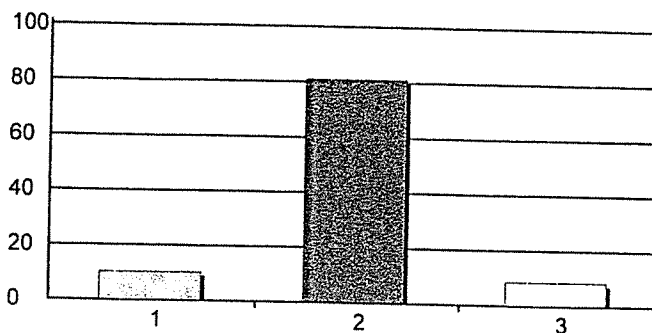
May 2, 2021

36. Mileage Do you have access to facilities for physical activity?



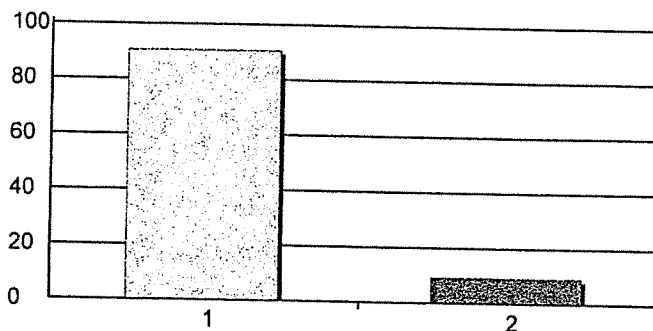
1. Yes 1520 84%
 2. No 288 16%
 Total Responses: 1808
 Mean: 1.16 Standard Deviation: 0.37

37. Mileage Do you have a family history of:



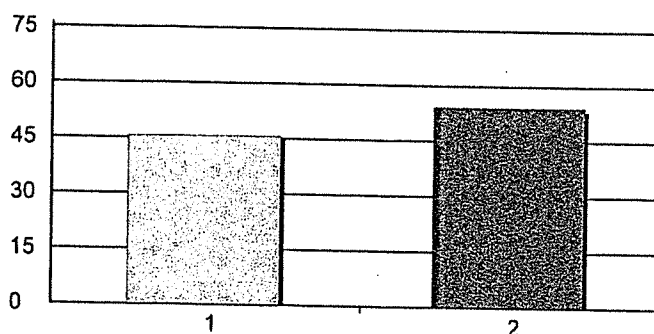
1. suicide 59 10%
 2. heart failure 463 81%
 3. opioid use 49 9%
 Total Responses: 571
 Mean: 1.98 Standard Deviation: 0.43

38. Mileage Have you or family member had COVID-19 vaccine?



1. Yes 1671 91%
 2. No 173 9%
 Total Responses: 1844
 Mean: 1.09 Standard Deviation: 0.29

39. Mileage Have you or family member had COVID-19?

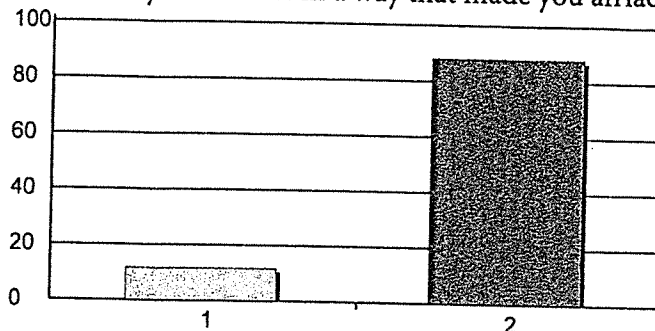


1. Yes 844 46%
 2. No 1004 54%
 Total Responses: 1848
 Mean: 1.54 Standard Deviation: 0.50

Community Needs Assessment Results

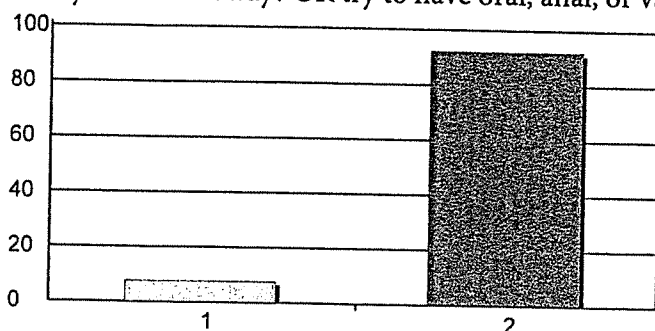
May 2, 2021

40. Mileage Did a parent or other adult in the household often swear at you, insult you, put you down, or humiliate you? OR act in a way that made you afraid that you might be physically harmed?



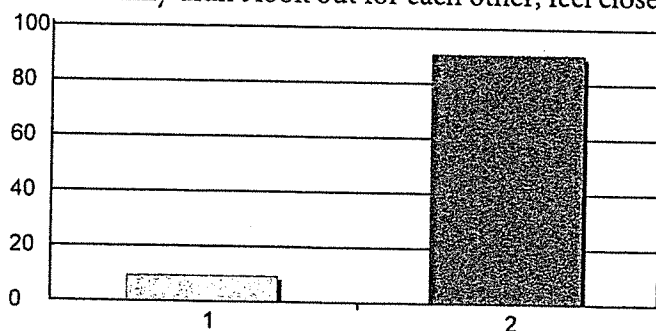
1. Yes you might be physically harmed? 214 12%
 2. No 1608 88%
 Total Responses: 1822
 Mean: 1.88 Standard Deviation: 0.32

41. Mileage Did an adult or person at least 5 years older than you ever touch or fondle you or have you touch their body in a sexual way? OR try to have oral, anal, or vaginal sex with you?



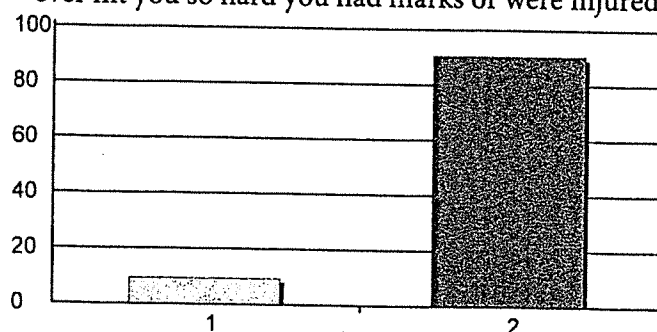
1. Yes 138 8%
 2. No 1670 92%
 Total Responses: 1808
 Mean: 1.92 Standard Deviation: 0.27

42. Mileage Did you often feel that no one in your family loved you or thought you were important or special? OR Your family didn't look out for each other, feel close to each other, or support each other?



1. Yes each other, or support each other? 169 9%
 2. No 1643 91%
 Total Responses: 1812
 Mean: 1.91 Standard Deviation: 0.29

43. Mileage Did a parent or other adult in the household often push, grab, slap, or throw something at you? OR ever hit you so hard you had marks or were injured?

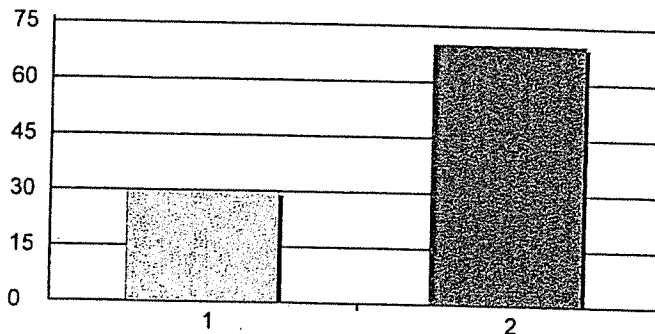


1. Yes 170 9%
 2. No 1641 91%
 Total Responses: 1811
 Mean: 1.91 Standard Deviation: 0.29

Community Needs Assessment Results

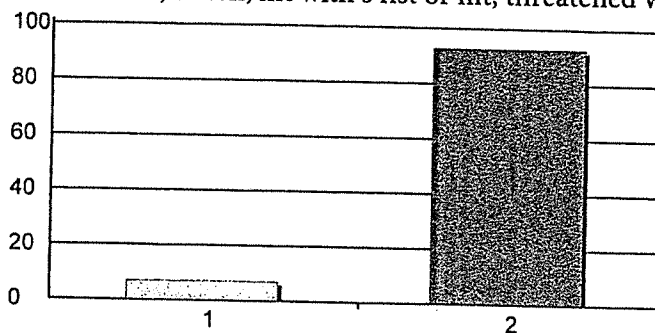
May 2, 2021

44. Mileage Were your parents ever separated or divorced?



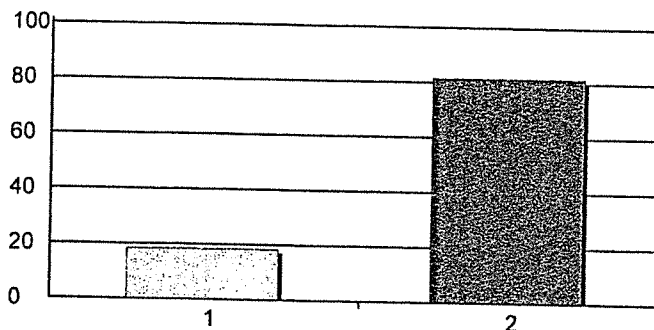
1. Yes 543 30%
 2. No 1276 70%
 Total Responses: 1819
 Mean: 1.70 Standard Deviation: 0.46

45. Mileage Was your mother or stepmother often pushed, grabbed, slapped, or had something thrown at her? Or kicked, bitten, hit with a fist or hit, threatened with a gun or knife?



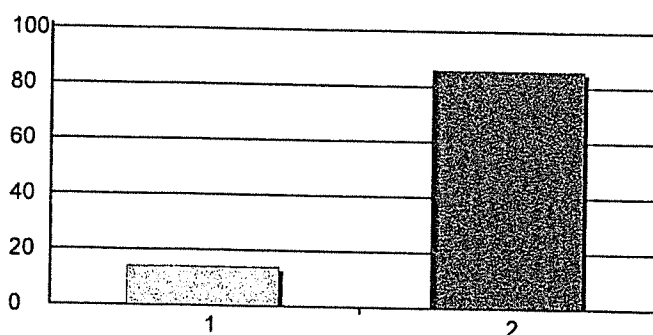
1. Yes 126 7%
 2. No 1660 93%
 Total Responses: 1786
 Mean: 1.93 Standard Deviation: 0.26

46. Mileage Did you live with anyone who was a problem drinker or alcoholic, or used street drugs?



1. Yes 328 18%
 2. No 1461 82%
 Total Responses: 1789
 Mean: 1.82 Standard Deviation: 0.39

47. Mileage Was a household member depressed or mentally ill or did a household member ever attempt suicide?

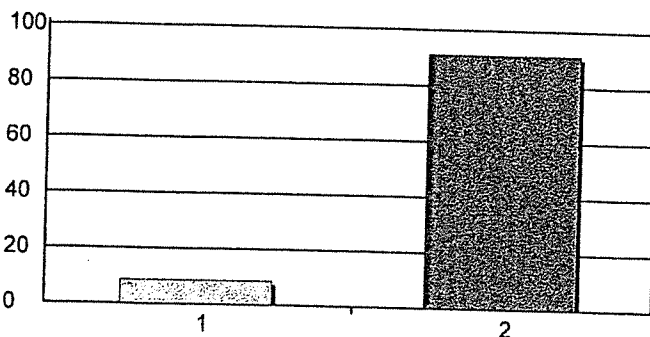


1. Yes 251 14%
 2. No 1547 86%
 Total Responses: 1798
 Mean: 1.86 Standard Deviation: 0.35

Community Needs Assessment Results

May 2, 2021

48. Mileage Did a household member every go to prison?



1. Yes

156 9%

2. No

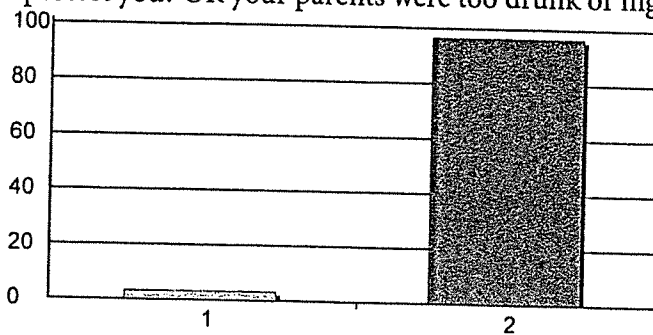
1643 91%

Total Responses:

1799

Mean: 1.91 Standard Deviation: 0.28

49. Mileage Did you often feel that you did not have enough to eat, had to wear dirty clothes, or had no one to protect you? OR your parents were too drunk or high to take care of you or take you to the



1. Yes take care of you or take you to the

58 3%

2. No

1743 97%

Total Responses:

1801

Mean: 1.97 Standard Deviation: 0.18

doctor?