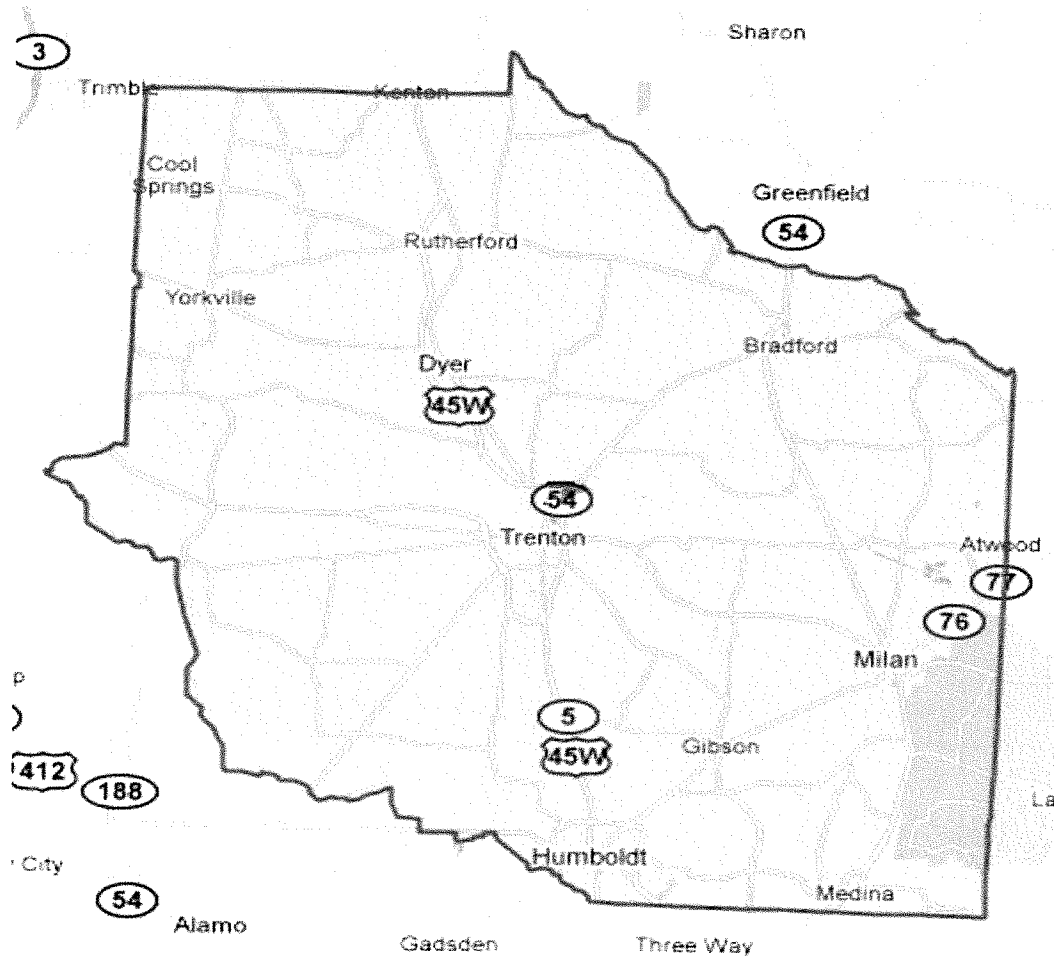


# **Community Health Needs Assessment**

## **Gibson County, Tennessee**



**Conducted by:**

**Department of Community Development**

**Victoria S. Lake**

**Update October 2021**

**In fulfillment of requirements of the Patient Protection and Affordable Care Act  
Pub.L.No.111-148, 124 Stat. 119, enacted March 23, 2010; and Department of Treasury  
Internal Revenue Service 26 CFR Parts 1, 53, and 62 *Additional Requirements for  
Charitable Hospitals; Community Health Needs Assessments for Charitable Hospitals;  
Requirement of a Section 4959 Excise Tax Return and Time for filing the Return.***

RESOLUTION OF THE BOARD OF TRUSTEES  
OF  
JACKSON-MADISON COUNTY GENERAL HOSPITAL DISTRICT  
AND  
CAMDEN GENERAL HOSPITAL, INC.  
AND  
BOLIVAR GENERAL HOSPITAL, INC.  
AND  
MILAN GENERAL HOSPITAL, INC.  
AND  
DYERSBURG HEALTH  
AND  
MARTIN HEALTH  
AND  
PATHWAYS OF TENNESSEE, INC.

COMMUNITY HEALTH NEEDS ASSESSMENT APPROVAL

WHEREAS, the Patient Protection and Affordable Care Act, enacted March 10, 2010, requires public and not-for-profit hospitals to perform a Community Health Needs Assessment for each hospital; and

WHEREAS, the staff of the District has conducted such an Assessment and prepared the report as required for each of its hospitals; and

WHEREAS, the Assessments were prepared in accordance with IRS rules and regulations, as amended, regarding Community Health Needs Assessments for Tax Exempt Hospitals; and

WHEREAS, the Board finds that the Assessments substantially meet the requirements of the of the Patient Protection and Affordable Care Act and the applicable IRS rules and regulations, and that the Implementation Strategies set forth in the Assessments shall be implemented in accordance with Management recommendations.

NOW, THEREFORE, BE IT RESOLVED, that the Community Health Needs Assessments given to the Board are approved and adopted.

ADOPTED, this the 26th day of October, 2021.

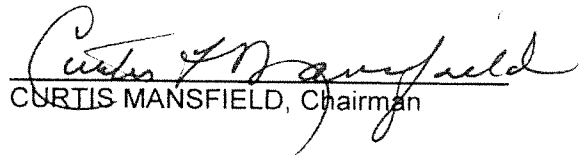
  
CURTIS MANSFIELD, Chairman

EXHIBIT: 2-5

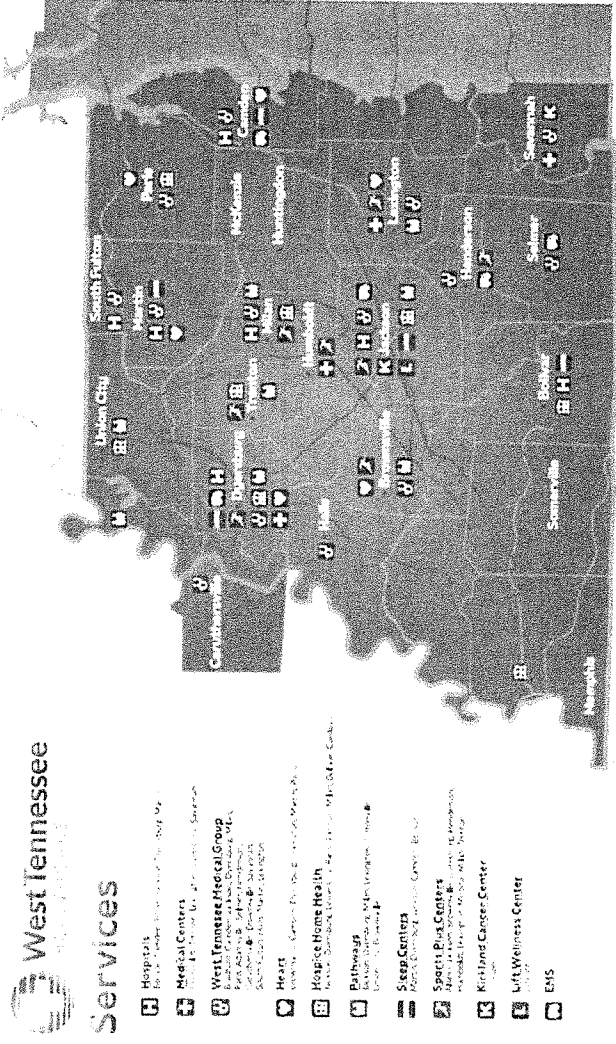


# 2021 Community Health Needs Assessment

Executive Summary

Assessments were conducted for Madison, Benton, Chester, Crockett, Dyer, Gibson, Haywood, Hardeman, Weakley, and for Pathways as a mental health hospital.

The 2021 Assessment was an update of those conducted 2012, 2015, and 2018.

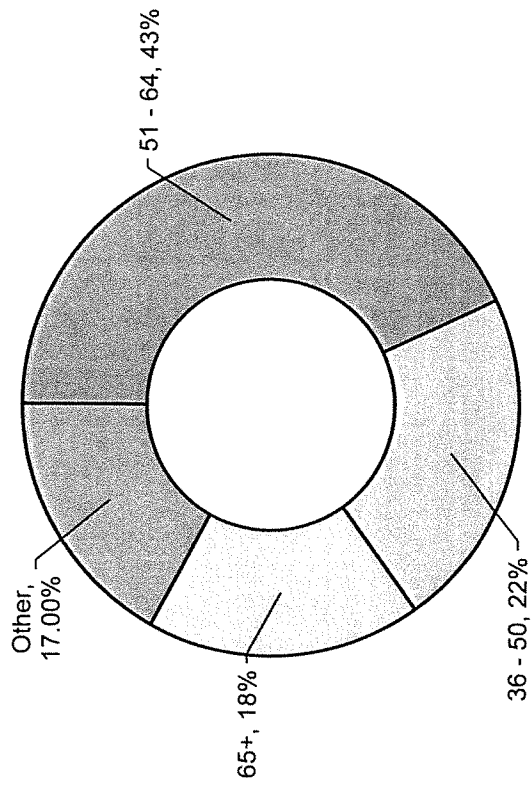


# Methodology

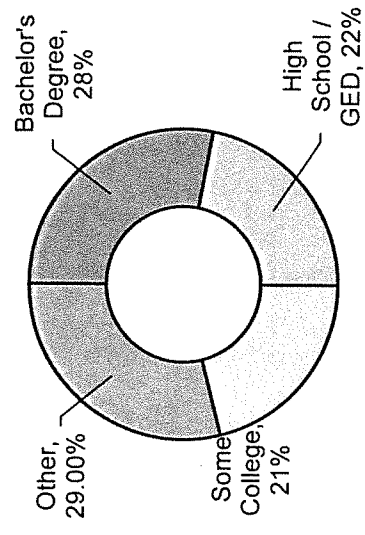
- The first stage of the Update process involved gathering secondary data from multiple sources for each county.
- The second step in the Community Health Needs Assessment Update process consisted of creating a survey to collect data from residents on local health issues. The survey consisted of 49 questions that asked basic demographics of age, race, education level, insurance, county of residence, presence or absence of specific health issues, access to care, physical activity, health information, and ten questions on adverse childhood experiences prior to 18th birthday. Respondents were requested to answer a simple “yes” or “no” to specific health issues and adverse childhood experiences.
- The survey instrument was distributed by hand during community wide COVID-19 vaccination clinics at Lane College and Humboldt Medical Center on March 20, 2021; and Jackson-Madison County General Hospital on March 30, 2021. **Data from 1,895 completed surveys was collected.**

# Respondents

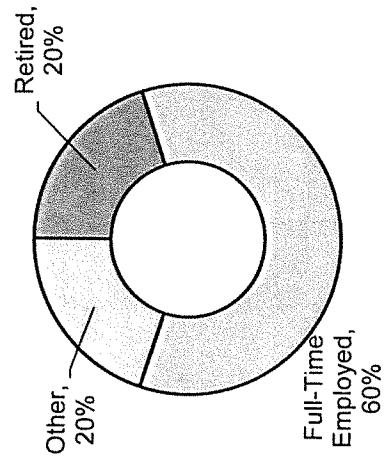
By Age



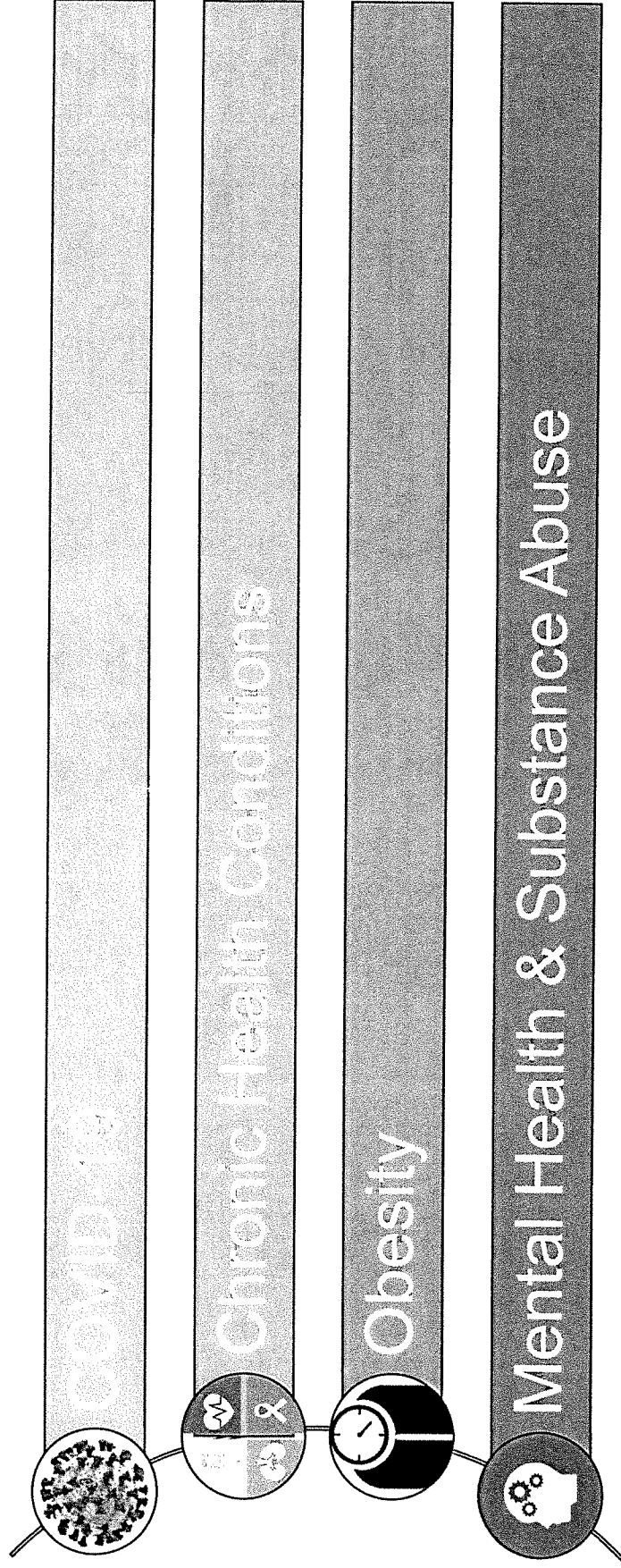
Education Level



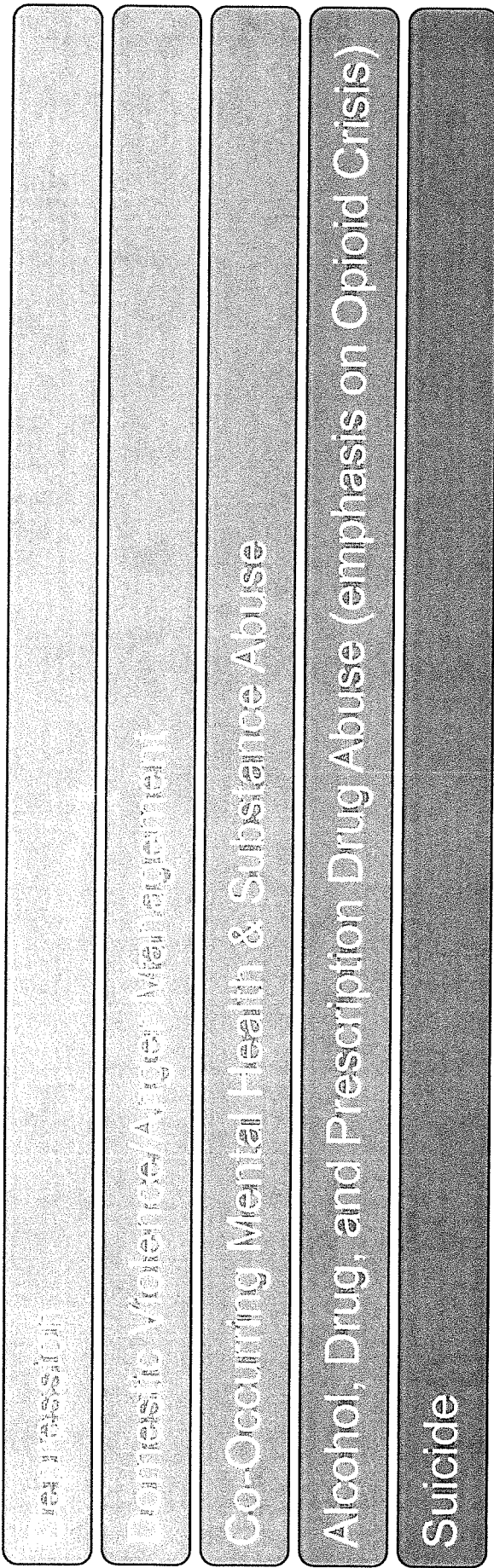
Employment Status



# Priority Health Issues Acute Care



# Priority Behavioral Health Issues Pathways





## **Table of Contents**

West Tennessee Healthcare Community Needs Assessment Summary 2021	1
Introduction	2
Description of the Hospital and Community	2
Description of Community Health Needs Assessment Update Process	4
Results of Survey	6
Survey Respondent Demographics	7
Results of Secondary Data Analysis	10
Priority Health Issues	13
Conclusion	13
Attachment A	Secondary Data
Attachment B	Summary-Secondary Data
Attachment C	Community Health Assessment Survey Instrument
Attachment D	Community Health Assessment Survey Results

## West Tennessee Healthcare Community Health Needs Assessment Summary 2021

Needs assessments were completed in fulfillment of requirements of the Patient Protection and Affordable Care Act Pub.L.No.111-148, 124 Stat. 119, enacted March 23, 2010; and Department of Treasury Internal Revenue Service 26 CFR Parts 1, 53, and 62 *Additional Requirements for Charitable Hospitals; Community Health Needs Assessments for Charitable Hospitals; Requirement of a Section 4959 Excise Tax Return and Time for filing the Return.*

Assessments were conducted for Madison, Benton, Chester, Crockett, Dyer, Gibson, Haywood, Hardeman, Weakley, and for Pathways as a mental health hospital. This document reflects work done for the Dyer County Community Health Needs Assessment.

The 2021 needs assessments were update of those conducted in 2012, 2015, and 2018. Because of high volumes of COVID-19, this is a limited needs assessment conducted by a committee of West Tennessee Healthcare staff. Tennessee Department of Health Community Health Councils are not meeting on a regular basis due to COVID-19 so input from community representatives was not available. Jackson-Madison County General Hospital and other community agencies are conducting very little community outreach efforts. WTH staff will reconvene the Needs Assessment Committee in 2022, and upon consultation with the Health Council, will update outreach strategies.

The first stage of the Update process involved gathering secondary data from multiple sources for each county. The second step in the Community Health Needs Assessment Update process consisted of creating a survey to collect data from residents on local health issues. The survey consisted of 49 questions that asked basic demographics of age, race, education level, insurance, county of residence, presence or absence of specific health issues, access to care, physical activity, health information, and ten questions on adverse childhood experiences prior to 18<sup>th</sup> birthday. Respondents were requested to answer a simple “yes” or “no” to specific health issues and adverse childhood experiences.

The survey instrument was distributed by hand during community wide COVID-19 vaccination clinics at Lane College and Humboldt Medical Center on March 20, 2021; and Jackson-Madison County General Hospital on March 30, 2021. Data from 1,895 completed surveys was collected.

Sixteen WTH staff and two members from Quality Council were asked to serve on an Internal Committee to review secondary and survey data. Surveys were distributed at several locations, and data were requested on basic respondent demographics. The age group 51 to 64 represented 43 percent of respondents, followed by age 36 to 50 (22 percent), and age 65 and older (18 percent). The predominant education level is respondents with a Bachelors degree (28 percent), followed by high school graduate/ GED (22 percent) and some college (21 percent). Sixty percent (60 percent) of respondents were working full time and 20 percent were retired. A majority of individuals completing the survey were women (56 percent), had private health insurance (59 percent), and were Caucasian (68 percent)

Upon a review of survey responses and secondary data, four priority health issues were identified.

COVID-19  
Chronic Health Conditions  
Obesity  
Mental Health and Substance Abuse Issues

Pathways Issues

Depression  
Domestic Violence/Anger Management  
Co-Occurring Mental Health & Substance Abuse  
Alcohol, Drug, and Prescription Drug Abuse (emphasis on Opioid Crisis)  
Suicide

## **Introduction**

Under the leadership of West Tennessee Healthcare Milan Hospital, a community health needs assessment was conducted in 2021. The needs assessment was completed in fulfillment of requirements of the Patient Protection and Affordable Care Act Pub.L.No.111-148, 124 Stat. 119, enacted March 23, 2010; and Department of Treasury Internal Revenue Service 26 CFR Parts 1, 53, and 62 *Additional Requirements for Charitable Hospitals; Community Health Needs Assessments for Charitable Hospitals; Requirement of a Section 4959 Excise Tax Return and Time for filing the Return*.

This 2021 needs assessment is an update of those conducted in 2012, 2015, and 2018. Because of high volumes of COVID-19, this is a limited needs assessment conducted by a committee of West Tennessee Healthcare staff (including Milan Hospital). Tennessee Department of Health Community Health Councils are not meeting on a regular basis due to COVID-19 so input from community representatives was not available. Jackson-Madison County General Hospital, West Tennessee Healthcare Milan Hospital and other community agencies are conducting very little community outreach efforts. The Hospital will reconvene the Needs Assessment Committee in 2022, and upon consultation with the Health Council, will update outreach strategies. The process used to conduct this limited assessment is described in the following pages.

## **Description of the Hospital and Community**

West Tennessee Healthcare Milan Hospital is licensed for 70 inpatient beds (including 12 swing beds) and was acquired by the Jackson-Madison County General Hospital District in 1997. The Hospital is a member of the American Hospital Association, Tennessee Hospital Association, is accredited by The Joint Commission, and is approved by the U.S. Department of Health and Human Services for participation in Medicare and Medicaid programs. Their service area is Gibson County, Tennessee.

Located in Milan, Tennessee, the Hospital provides general medical, outpatient rehabilitation services, general surgery, internal medicine, a medical/surgical unit, a critical care unit, pathology and laboratory department, radiology (computerized axial tomography, mammography, ultrasound, and diagnostic X-RAY), gastroenterology services, GI or endoscopy

lab, sleep laboratory, sleep studies, urology, vascular surgery, 24 hour/7 days a week emergency services, and social service.

The designated “community” for the needs assessment is Gibson County, Tennessee. With a 2020 Decennial Census population of 50,429, Gibson County is located in rural Southwest Tennessee approximately 111 miles East of Memphis and 143 miles West of Nashville. The population is 2.9 percent Hispanic and 97.1 percent Other. According to the Tennessee Department of Economic & Community Development, 15.8 percent of persons living in households are below the Federal poverty level. The personal income per capita is \$39,892. The population 18 to 64 represents 58.2 percent, while the age 65 and older population is 17.7 percent of the total. The high school graduation rate is 93 percent; 28.4 percent have an Associate Degree or higher and 20.7 percent have a Bachelor Degree or higher.

Gibson County is composed of a number of small towns: Bradford (1,238 pop), Dyer (2,791 pop), Gibson (460 pop), Humboldt (8,169 pop), Kenton (1,090 pop), Medina (4,209 pop), Milan (7,672 pop), Rutherford (1,116 pop), Trenton (4,217 pop), and Yorkville (215 pop).

Gibson County has a wide range of industries that employ individuals living in and around the county. Gibson County is home to manufacturers and businesses such as AAG, Inc (400 employees), Maclean Power TN, LLC (388 employees), Wal-Mart Stores (500 employees), The Winfrey Center (250 employees), and Milan Express Supply Chain Solutions (230 employees).

Other top employers are Gibson County School District with 550 employees, Gibson County Government (292 employees), Milan Special School District (300 employees), Humboldt City Schools (213 employees).

The county seat of Gibson County is Trenton, Tennessee. The five School Systems in Gibson County (Humboldt City Schools-798 students, Milan Special School District-1,894 students, Trenton Special School District-1,265 students, Gibson County Schools-4,013 students, and Bradford Special School District-607 students) total 8,577 students.

### **Description of Community Health Needs Assessment Update Process**

The mission of the Community Health Needs Assessment is to evaluate and improve the health status and wellbeing of residents in Gibson County, Tennessee with an emphasis on preventive measures. The community health needs assessment was a review of survey results and secondary data identifying state and regional health data.

The Community Health Needs Assessment had ten (10) organizational goals.

1. To form alliances between West Tennessee Healthcare Milan Hospital, non-profit organizations, and the community at large to assess, improve, and promote the community health of Gibson County, Tennessee.
2. To identify internal resources already available to assist in improving community health.
3. To assist in identifying available community resources.
4. To define “health” as it pertains to Gibson County, Tennessee.
5. To identify collaborative partners.
6. To educate and gain formal support of West Tennessee Healthcare leadership team, Board of Trustees, community leaders, and others.
7. To assist in establishing baseline health status assessment of Gibson County by collecting and reviewing available secondary data and statistics from resident surveys.
8. To assist in determining standards against which to measure current and future health status of the community.
9. To assist in communitywide establishment of health priorities and in facilitating collaborative planning, actions, and direction to improve community health status and quality of life.
10. To promote the need for ongoing evaluation of the community health assessment process to learn results, establish new goals and encourage further community action and involvement.

The first stage of the Update process involved gathering secondary data from multiple sources including the Tennessee Department of Health, County Health Rankings and Roadmaps,

Tennessee Department of Economic & Community Development, Tennessee Department of Mental Health and Substance Abuse Services, Tennessee Bureau of Investigation, Centers of Disease Control and Prevention, Tennessee Behavioral Health County and Region Services Data Book, Tennessee Department of Health. Behavioral Risk Factor Surveillance System, and Traumatic Brain Injury Program. These data are presented in **Attachment A**.

The second step in the Community Health Needs Assessment Update process consisted of creating a survey to collect data from residents on local health issues. The survey consisted of 49 questions that asked basic demographics of age, race, education level, insurance, county of residence, presence or absence of specific health issues, access to care, physical activity, health information, and ten questions on adverse childhood experiences prior to 18<sup>th</sup> birthday.

Respondents were requested to answer a simple “yes” or “no” to specific health issues and adverse childhood experiences. **Attachment B** contains a summary of secondary data.

The survey instrument was distributed by hand during community wide COVID-19 vaccination clinics at Lane College and Humboldt Medical Center on March 20, 2021; and Jackson-Madison County General Hospital on March 30, 2021. Data from 1,895 completed surveys was collected. **Attachment C** contains a copy of the survey instrument, and **Attachment D** has a copy of the survey results.

An internal committee of West Tennessee Healthcare staff were identified to participate in the update process.

Vicki Lake	Department of Community Development
Rose Bailey	Department of Diversity, Health Equity, and Operational Excellence
Ruby Kirby	WTH Bolivar Hospital and WTH Camden Hospital
Joyce Noles	Emergency Services
Deena Kail	West Tennessee Women’s Center, Ayers Children’s Medical Center
Gina Myracle	Alice and Carl Kirkland Cancer Center
Melissa Walls	Virtual Care
Frank McMeen	West Tennessee Healthcare Foundation
Anna Tetleton Burns	Primary Care Clinics
Miki Martin	LIFT
LeAnn Childress	LIFT Therapy
Pam Henson	Pathways Behavioral Health Services

Betty Haskins	WTH Camden Hospital
Scott Barber	WTH Dyersburg Hospital
Sherry Scruggs	WTH Milan Hospital
Kevin Decker	WTH Volunteer Hospital

Tina Prescott	Administration
Vanessa Patrick	Administration

### Results of Survey (N=1,895)

Health prevalence was identified by the percentage of respondents indicating they had experienced a specific medical issue. Figure 1 contains the ranking according to prevalence among respondents.

Figure 1: Health Issue Prevalence

Allergies	46%	Lack of financial resources: dental care	15%
High Blood Pressure	42%	Lack of financial resources: medical care	10%
Arthritis	33%	Lack of financial resources: medications	10%
Stress	31%	Lack of transportation: medications:	5%
Chronic Pain	18%	Lack of transportation: dental care	4%
Diabetes	18%	Lack of transportation: medical care	4%
Eye Conditions	14%		
Asthma	12%	No access to adult or child care	32%
Hearing Loss	11%	No access to physical activity facilities	16%
Heart Conditions	11%	No access to healthy foods	14%
Bullying	10%		
Autoimmune Disease	8%	Family history of heart failure	81%
Fall Injuries	8%	Family history of suicide	10%
Osteoporosis	5%	Family history of opioid use	9%
COPD	4%		
Stroke	3%	COVID-19 Vaccination Experienced	91%
Dementia/Alzheimers	1%	COVID-19	46%

### Survey Respondent Demographics

Surveys were distributed at several locations, and data were requested on basic respondent demographics. The age group 51 to 64 represented 43 percent of respondents, followed by age 36 to 50 (22 percent), and age 65 and older (18 percent) (Figure 2). The predominant education level is respondents with a Bachelors degree (28 percent), followed by high school graduate/GED (22 percent) and some college (21 percent) (Figure 3). Sixty percent (60 percent) of respondents were working full time and 20 percent were retired (Figure 4). A majority of individuals completing the survey were women (56 percent) (Figure 5), had private health insurance (59 percent) (Figure 6), and were Caucasian (68 percent) (Figure 7).

Figure 2: Age Distribution

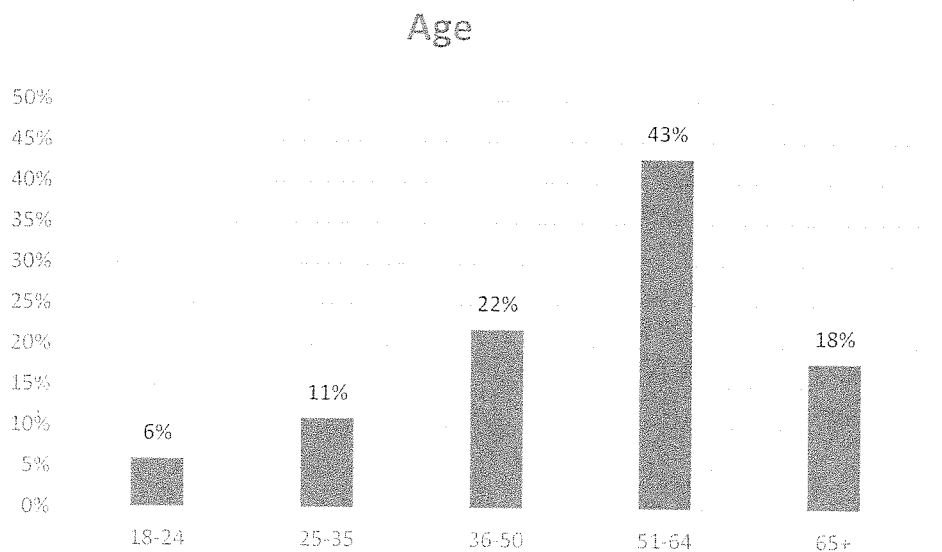




Figure 3: Education Levels

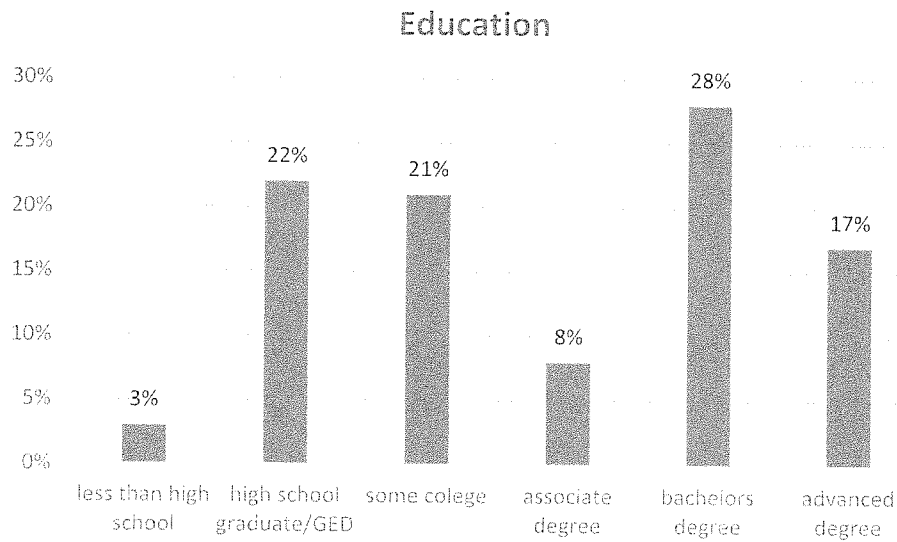


Figure 4: Employment Status

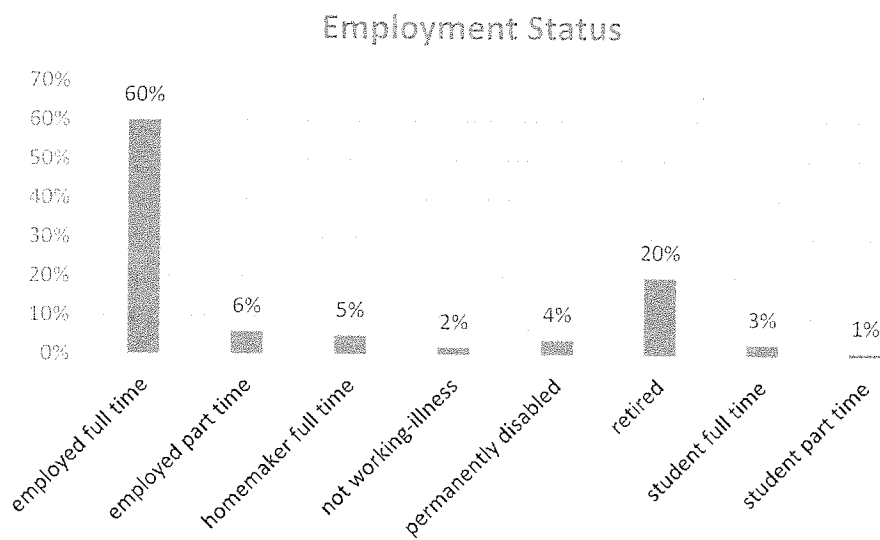


Figure 5: Gender

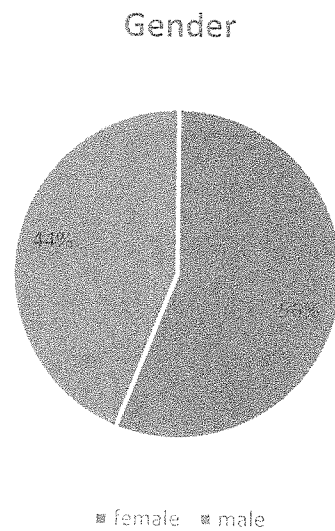


Figure 6: Insurance Coverage

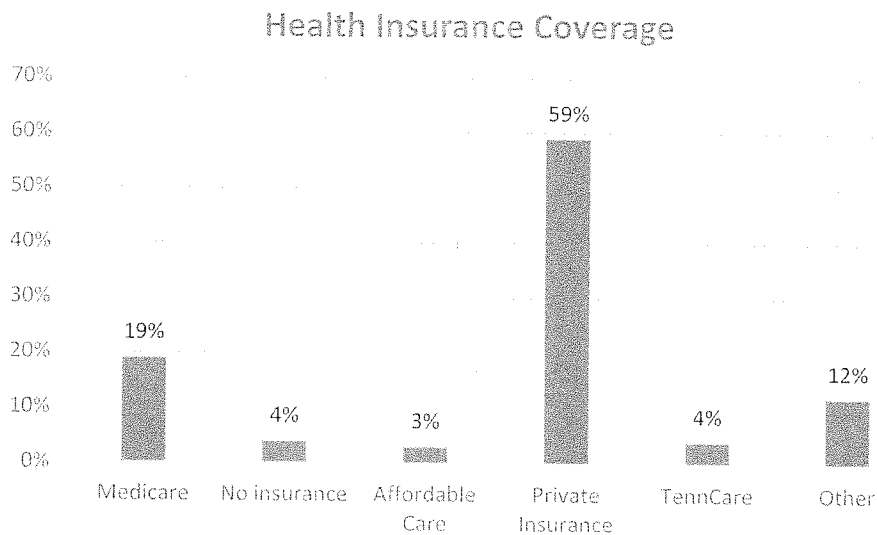
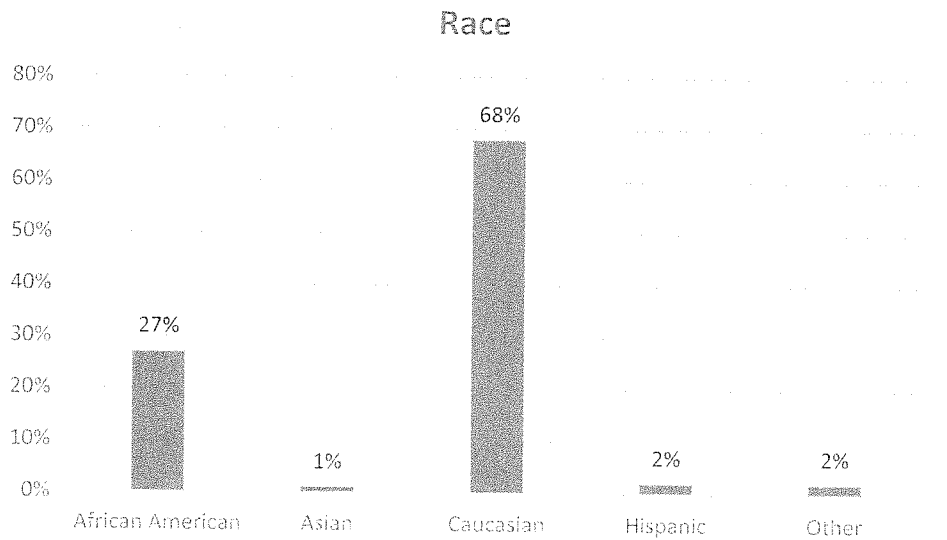


Figure 7: Race



### Results of Secondary Data Analysis

The West Tennessee Healthcare Committee reviewed secondary data, focusing on indicators where the county consistently had higher rates, percentages, volumes than the state as a whole. For Gibson County, deaths from cancer, deaths from heart disease, obesity, and deaths from diabetes were consistently higher than the State of Tennessee as a whole.

Table 1: Deaths from Diseases of the Cancer Per 100,000

Deaths from Malignant Neoplasms Per 100,000						
	Total	Gibson White	Black	Total	TN White	Black
2018	263.0	261.3	304.9	208.8	226.9	170.7
2017	240.3	246.0	242.6	212.8	230.6	173.1
2016	248.9	257.1	243.1	217.5	235.1	178.0

2015	277.3	264.2	341.9	214.8	229.5	170.4
2014	264.8	269.6	249.9	216.1	231.8	182.4
2013	238.6	249.1	207.4	214.5	231.0	176.4
2012	255.9	268.4	227.5	211.2	226.5	176.3
2011	298.4	312.7	265.5	210.2	224.6	180.1
2010	295.9	297.5	331.9	212.9	234.6	178.9
2009	303.3	319.4	248.0	216.2	226.9	183.5

Source: Tennessee Department of Health.

Table 2: Death from Diseases from the Heart per 100,000

Death from Diseases of the Heart Per 100,000						
Rate						
	Total	Gibson White	Black	Total	TN White	Black
2018	362.9	376.5	350.0	242.5	263.2	199.7
2017	399.1	436.6	264.7	238.4	259.5	193.8
2016	400.7	414.9	375.8	232.1	249.9	196.8
2015	313.7	327.7	231.6	237.5	252.8	190.1
2014	357.7	386.7	271.7	232.0	250.8	189.3
2013	321.5	358.4	185.6	226.7	245.1	183.1
2012	330.4	357.0	238.3	220.6	241.2	165.2
2011	334.4	353.1	286.8	221.0	239.7	175.3
2010	364.3	389.9	310.5	228.3	254.0	181.8
2009	313.6	306.5	351.3	228.0	241.1	185.8

Source: Tennessee Department of Health.

Table 3: Obesity

Percent of Adults who have a body mass index greater than 25-overweight or obese		
	Gibson	TN
2020	40	33
2019	36	33
2018	35	32
2017	32	32
2016	32	31
2015	34	32

2014	37	32
2013	37	32
2012	37	32
2011	34	31
2010	30	31

Source: Robert Wood Johnson Foundation and University of Wisconsin  
Population Health Institute.

Table 4: Deaths from Diabetes

**Deaths from Diabetes per 100,000**

	Total	Gibson White	Black	Total	TN White	Black
2018	48.9	46.1	67.8	29.9	29.4	38.0
2017	36.7	30.8	66.2	28.5	28.1	36.1
2016	22.3	22.9	22.1	28.4	27.5	37.3
2015	28.3	25.4	44.1	27.1	26.6	32.8
2014	32.3	30.5	43.5	26.3	25.8	33.5
2013	28.3	20.3	65.5	27.9	27.1	36.8
2012	44.3	38.0	75.8	28.2	27.4	36.7
2011	44.1	42.9	53.1	27.1	26.3	35.7
2010	42.3	33.3	85.7	26.4	26.4	35.0
2009	45.1	43.8	51.7	28.2	26.8	37.7

Source: Tennessee Department of Health.

In addition to these issues COVID-19 data for Gibson County was reviewed as of August 23, 2021. Gibson County has experienced 8,225 positive cases. Of this figure, 134 have been hospitalized, 154 individuals have died, and 7,225 have recovered.

### **Priority Health Issues**

Upon a review of survey responses and secondary data, four priority health issues were identified.

COVID-19

Chronic Health Conditions

Obesity

Mental Health and Substance Abuse Issues

### **Conclusion**

The Gibson County Community Health Needs Assessment was presented to the West Tennessee Healthcare Quality Council on Tuesday September 21, 2021. The document was approved for submission to the West Tennessee Healthcare Board of Trustees and approved on October 26, 2021.

The Hospital Committee will reconvene in 2022 to collaborate with the Tennessee Department of Health County Health Council and will update this report with identified strategies.

This report is submitted as required in the Patient Protection and Affordable Care Act Pub.L.NO.111-148, 124 Stat. 119, enacted March 23, 2010, requiring updating every three years.

**Gibson County Community Health Assessment**  
**Update of Size of Health issues 2021-Update 2-2021**  
**Prioritization of Health Issues**

Population	49,133
Age 65 +	18.3
Caucasian	79.4
African American	18.1
Latino	2.8
High School Graduates	84.9
B.S. Degree or Higher	17.8
Disability< Age 65	13.8
Median HH Income	\$ 41,886
PerCapita Income	\$ 22,565

**Number Receiving Behavioral Safety Net Services**

2015	2016	2017	2018	2019	2020
356	304	303	295	313	

**Face to Face Crisis Service Assessments**

593	567	549	789	652
-----	-----	-----	-----	-----

Source: Tennessee Department of Mental Health & Substance Abuse Services

Frequent mental distress 2014-2016-15 percent

**Alcohol Use**

**Binge/Excessive Drinking-Percent who report in the past 30 days**

	Gibson	TN
2020	13	14
2019	13	14
2018	13	14
2017	12	11
2016	11	12
2015	10	9
2014	10	9
2013	11	10
2012	14	9
2011	11	9
2010	10	9

Source: Robert Wood Johnson Foundation and University of Wisconsin Population Health Institute.

**Rate of Opioid Prescriptions-Number Per 1,000 persons**

	Gibson Co	TN	US
2018	1236.3	901.1	587.0
2017	1310.2		

2016	1422.1
2015	1404.8
2014	1494.1

Source: Informatics & Analytics Centers for Disease Control & Prevention.

#### Number of drug related arrests for adults over 18 in Gibson County

2019	372
2018	384
2017	450
2016	400
2015	217
2014	248

Source: Tennessee Bureau of Investigation

#### Allergies

1 in 5 Americans suffer from all types of allergies

Allergies have increased in prevalence since the 1980s across age, sex, racial groups.

Approximately 50 million people experience allergies.

Allergies are the 5th leading chronic disease among all ages.

#### Arthritis, Rheumatoid Arthritis, Gout, Lupus, or Fibromyalgia?

Have you ever been told by a doctor, nurse, or other health care professional that you had Arthritis, Rheumatoid Arthritis, Gout, Lupus, or Fibromyalgia? (percent)

	TN
2016	31
2015	32
2014	32.6

Source: Tennessee Department of Health. Behavioral Risk Factor Surveillance System.

#### Asthma

\*Number of adults aged 18 and over who currently have asthma: 19.2 million

\*Percent of adults aged 18 and over who currently have asthma: 7.7%

\*Number of children under age 18 years who currently have asthma: 5.5 million

\*Percent of children under age 18 years who currently have asthma: 7.5%

\*Number of physician office visits with asthma as a primary diagnosis: 9.8 million

\*Number of emergency department visits with asthma as a primary diagnosis: 1.6 million

\*Number of deaths: 3,524

\*Deaths per 100,000 population: 1.1

\*Asthma is a chronic inflammation of the lung airways that causes coughing, chest tightness, wheezing or shortness of breath

\*8.3% of Americans have asthma. Of these 26.5 million, 20.4 million are adults and 6.1 million are children

\*Asthma prevalence is higher in children (9.4 percent) than in adults (7.7 percent), and higher in females (9.2 percent) than males (7.0 percent)

\*Patients with asthma reported 11 million visits to a doctor's office and 1.7 million visits to hospital outpatient departments



\*Asthma results in 439,000 hospitalizations and 1.3 million emergency room visits annually.

\*Asthma is the most common chronic illness in childhood, accounting for 13.8 million missed school days each year. It also accounts for 14.2 million lost work days for adults.

\*The estimated economic cost of asthma is \$56 billion annually.

\*More than 3,500 people die of asthma each year, nearly half of whom are age 65 or older

\*Asthma symptoms can be triggered by exposure to an allergen

\*Asthma is often hereditary.

\*Weather conditions such as extremely dry, wet or windy weather can worsen asthma conditions

Source: Centers for Disease Control and Prevention.

## Cancer

### Deaths from Malignant Neoplasms Per 100,000

	Total	Gibson			Total	TN	
		White	Black			White	Black
2018	263.0	261.3	304.9		208.8	226.9	170.7
2017	240.3	246.0	242.6		212.8	230.6	173.1
2016	248.9	257.1	243.1		217.5	235.1	178.0
2015	277.3	264.2	341.9		214.8	229.5	170.4
2014	264.8	269.6	249.9		216.1	231.8	182.4
2013	238.6	249.1	207.4		214.5	231.0	176.4
2012	255.9	268.4	227.5		211.2	226.5	176.3
2011	298.4	312.7	265.5		210.2	224.6	180.1
2010	295.9	297.5	331.9		212.9	234.6	178.9
2009	303.3	319.4	248.0		216.2	226.9	183.5

Source: Tennessee Department of Health.

## COPD, Emphysema, or Chronic Bronchitis

About 9.7 percent of Tennessee population have COPD.

Respondents were more likely to report COPD ( $p < 0.05$ ) if they

- Were female.
- Were unable to work.
- Had not graduated from high school.
- Had a household income of \$25,000 or less.
- Had a history of smoking (current or former).
- Had a history of asthma.

Respondents were less likely to report COPD ( $p < 0.05$ ) if they

- Were aged 44 years or younger.
- Were male.
- Had never smoked.
- Had no history of asthma.

Source: COPD Foundation; Centers for Disease Prevention and Control

## Diabetes

### Deaths from Diabetes per 100,000

	Gibson			TN		
	Total	White	Black	Total	White	Black
2018	48.9	46.1	67.8	29.9	29.4	38.0
2017	36.7	30.8	66.2	28.5	28.1	36.1
2016	22.3	22.9	22.1	28.4	27.5	37.3
2015	28.3	25.4	44.1	27.1	26.6	32.8
2014	32.3	30.5	43.5	26.3	25.8	33.5
2013	28.3	20.3	65.5	27.9	27.1	36.8
2012	44.3	38.0	75.8	28.2	27.4	36.7
2011	44.1	42.9	53.1	27.1	26.3	35.7
2010	42.3	33.3	85.7	26.4	26.4	35.0
2009	45.1	43.8	51.7	28.2	26.8	37.7

Source: Tennessee Department of Health.

#### Percentage of Population Diagnosed with Diabetes

	Gibson	TN
2020	16	13
2019	15	13
2018	14	13
2017	13	13
2016	13	12
2015	12	12
2014	12	11
2013	12	11
2012	12	11
2011	13	11

Source: Robert Wood Johnson Foundation and University of Wisconsin

#### Dental Care

Tennessee ranks 38th for dental care. Oral cancer from tobacco use accounts for 75 to 90 percent of oral cancer. About 22 percent of adults and 10 percent of children smoke in Tennessee.

People do not visit a dentist because of cost (70%) and fear (25%).

Gibson County is Federal Health Professional Shortage Area for Dental Care

ID=64799947GB Rainbow Pediatric PC Rural Health Clinic Score=17 Rural

ID=64799947GA TN Dept of Health FQHC Trenton Score=25 Non-Rural

ID=6473296218 Low Income Population County Score=17 Rural

Gibson County Single County Designation 47053 Rural

#### Financial Resources

##### Children in Poverty-Percent of children under 18 in poverty

	Gibson	TN
2020	23	22
2019	22	21
2018	23	23
2017	23	24

2016	27	26
2015	27	27
2014	27	26
2013	27	27
2012	27	26
2011	22	22
2010	25	23

Source: 2017 Tennessee Behavioral Health County and Region Services Data Boook

**Uninsured Adults-Percent Population Under Age 65 without health insurance**

	Gibson	TN
2020	14	14
2019	12	13
2018	11	12
2017	13	14
2016	16	16
2015	15	16
2014	20	21
2013	20	21
2012	21	20
2011	17	19
2010	15	15

**Percent Children Linving in Single-Parent households**

	Gibson	TN
2020	36	35
2019	40	35
2018	36	36
2017	33	36
2016	34	36
2015	33	36
2014	33	35
2013	34	35
2012	38	35
2011	36	34

Source: Robert Wood Johnson Foundation and University of Wisconsin Population Health Institute.

Source: Tennessee Department of Health. Behavioral Risk Factor Surveillance System.

**All People in Poverty-Percent**

	Gibson	TN
2019	16.5	17.6

Source: County and City QuickFacts.

**Unemployment**

	Gibson	TN	US
Nov-20	5.4	5.3	6.7
Nov-19	4.1	3.3	3.5
2017	3.8	3.2	4.1
2016	6.1	5.1	4.7
2015	7.1	5.5	5.0
2014	8.4	6.6	5.6

Source: Tennessee Department of Labor & Workforce Development

### Heart Conditions

#### Death from Diseases of the Heart Per 100,000

Rate

	Gibson			TN		
	Total	White	Black	Total	White	Black
2018	362.9	376.5	350.0	242.5	263.2	199.7
2017	399.1	436.6	264.7	238.4	259.5	193.8
2016	400.7	414.9	375.8	232.1	249.9	196.8
2015	313.7	327.7	231.6	237.5	252.8	190.1
2014	357.7	386.7	271.7	232.0	250.8	189.3
2013	321.5	358.4	185.6	226.7	245.1	183.1
2012	330.4	357.0	238.3	220.6	241.2	165.2
2011	334.4	353.1	286.8	221.0	239.7	175.3
2010	364.3	389.9	310.5	228.3	254.0	181.8
2009	313.6	306.5	351.3	228.0	241.1	185.8

Source: Tennessee Department of Health.

### High Blood Pressure

#### Deaths from Cerebrovascular Disease per 100,000

RATE

	Gibson			TN		
	Total	White	Black	Total	White	Black
2018	48.9	48.8	55.1	52.4	55.2	50.1
2017	77.5	69.2	112.9	51.7	54.5	49.9
2016	76.9	91.6	22.1	52.8	55.1	52.6
2015	95.1	81.3	154.4	52.2	53.9	49.8
2014	84.9	83.9	97.8	50.7	53.1	48.4
2013	84.9	68.6	163.7	48.1	50.5	45.8
2012	106.8	103.8	130.0	46.3	48.6	42.9
2011	86.1	85.8	95.6	50.1	52.8	46.2
2010	90.6	102.6	53.5	50.1	54.3	45.6
2009	94.3	95.3	93.0	50.6	51.9	48.2

Source: Tennessee Department of Health.

### Influenza in rural West Tennessee

#### Flu Vaccine Rates: Elderly

	Gibson Co	TN	US
2018	53.0%	47.37%	45.99%
2017	53.0%		
2016	58.0%		
2015	62.9%		
2014	62.9%		

Source: US Department of Health & Human Services

## Obesity

### Youth Obesity

	Gibson Co	TN
2017	43.3%	
2016	44.1%	39.2%
2015	43.7%	
2014	43.2%	

Source: Coordinated School Health.

### Physical Activity

	Gibson Co	TN	US
2018			75.4%
2017		69.4%	
2016	66.2%		
2015	64.5%		
2014	61.0%		

Source: Behavioral Risk Survey. Percentage of adults reporting physical activity-past 30 da

### Percent of Adults who have a body mass index greater than 25-overweight or obese

	Gibson	TN
2020	40	33
2019	36	33
2018	35	32
2017	32	32
2016	32	31
2015	34	32
2014	37	32
2013	37	32
2012	37	32
2011	34	31
2010	30	31

Source: Robert Wood Johnson Foundation and University of Wisconsin Population Health Institute.

## Teenage Pregnancy

### Pregnancies Age 10-17 per 1,000 Females

	Gibson				TN		
	Total	White	Black		Total	White	Black
2018	5.0	3.5	11.5		4.6	3.7	8.8
2017	3.0	2.5	5.5		4.9	4.1	8.7
2016	2.2	3.0	2.5		5.4	4.5	9.7
2015	4.1	3.9	5.5		6.0	5.1	10.2
2014	5.2	4.4	8.9		6.3	5.5	10.7

### Pregnancies Age 15-17 Per 1,000 Females

	Gibson			TN		
	Total	White	Black	Total	White	Black
2018	13.6	9.6	30.9	11.6	9.5	21.6
2017	7.1	6.7	9.9	12.4	10.5	21.4
2016	6.2	5.5	10.2	13.7	11.5	23.6
2015	10.7	11.2	10.3	15.2	13.2	24.7
2014	15.2	13.0	25.5	16.1	14.2	25.6

Source: Tennessee Department of Health.

### Tobacco, Alcohol, and Substance Abuse

#### Adult Smoking-Percent of Adults that report smoking at least 100 cigarettes

	Gibson	TN
2020	22	23
2019	22	22
2018	22	22
2017	22	22
2016	25	24
2015	30	23
2014	30	23
2013	30	23
2012	35	24
2011	36	24
2010	36	25

Source: County Health Rankings.

### Dementia/Alzheimer's Disease

#### Deaths from Alzheimers per 100,000

	Gibson			TN		
	Total	White	Black	Total	White	Black
2017	95.7	107.9	55.1	52.4	60.4	27.2
2013	89.0	99.1	54.6	38.9	44.8	19.5

Source: Tennessee Department of Health.

Over 5 million Americans are living with Alzheimers Disease-110,000 in Tennessee

Tennessee in 2014 16,000 adults ages 65-74 living with Alzheimers

Tennessee in 2014 47,000 adults ages 75-84 living with Alzheimers

Tennessee in 2014 41,000 adults ages 85+ living with Alzheimers

Alzheimers is the 5th leading cause of death in the United States.

138 percent increase in Alzheimers deaths since 2000

### Illiteracy

#### Education Level of Adults in Gibson County

	TN	
Highschool graduate of higher % age 25+ 2015-2019	87.1	85.3
Bachelors Degree higher % age 25+ 2015-202019	27.3	18.4

Source: Census Bureau QuickFacts

### Child Abuse & Neglect in Tennessee

	Gibson	TN
2020	4.7	4.7
2019	4.9	4.9
2016	5.0	4.8
2014	4.7	4.5
2012	4.5	4.9
2010	4.0	5.5
2009	3.9	7.0
2008	4.3	8.4
2007	4.6	11.6
2006	8.8	11.7

Source: Tennessee Commission on Children and Youth: KIDS COUNT: The State of the Child in Tennessee.

### Crime

2019

	Offenses		Arrests	
	Reported	Cleared	Adult	Juvenile
Humboldt PD	630	186	218	21
Milan PD	635	348	522	10
Trenton PD	491	105	229	8
Gibson Co Sheriff	639	345	903	18
Dyer PD	81	35	29	1
Medina PD	124	51	59	5

2016

	Offenses		Arrests	
	Reported	Cleared	Adult	Juvenile
Humboldt PD	799	289	286	20
Milan PD	815	389	599	36
Trenton PD	283	79	216	8
Gibson Co Sheriff	764	370	507	10
Dyer PD	142	50	49	5
Medina PD	163	47	50	28

Source: Tennessee Bureau of Investigation.

Summary of Health Issues-2021 Community Health Needs Assessment Secondary Data

X= Indicator Higher for the County than the State of Tennessee

County	Cancer Deaths	Heart Disease	Children in Poverty	Uninsured Population	Persons in Poverty	Obesity	Teen Pregnancy	Tobacco Use	Cerebrovascular Deaths	Diabetes Deaths	Excessive Drinking	Teen Pregnancy	Drug-Related Issues	Diabetes Diagnosed	Motor Vehicle Accidents
Benton	X	X	X	X		X		X	X	X		X			
Chester		X			X	X				X		X			
Crockett	X	X		X	X	X		X		X			X	X	
Gibson	X	X				X				X		X	X		X
Hardeman	X	X	X	X		X		X	X	X			X	X	
Haywood	X	X	X			X			X	X			X	X	X
Madison		X	X			X			X	X			X	X	
Dyer	X	X				X			X	X		X	X	X	
Weakley	X					X				X			X		



# Community Health Assessment Survey

## West Tennessee Healthcare

We would like you to help us identify current health and well being issues facing rural West Tennessee counties. Your responses will be confidential. This survey will take between 3-5 minutes.

Please answer the following questions by selecting the response that best describes you. Darken or fill in the circle for each response.

1. Age
  - ☐ 18-24
  - ☐ 25-35
  - ☐ 36-50
  - ☐ 51-64
  - ☐ 65+
2. Education
  - ☐ Less than high school
  - ☐ Associate degree
  - ☐ High school graduate/GED
  - ☐ Bachelor degree
  - ☐ Some college
  - ☐ Advanced degree
3. Employment Status
  - ☐ Employed full time
  - ☐ Homemaker full time
  - ☐ Permanently disabled
  - ☐ Student full time
  - ☐ Employed part time
  - ☐ Not working because of acute illness or injury
  - ☐ Retired
  - ☐ Student part time
4. Gender
  - ☐ Female
  - ☐ Male
  - ☐ Trans Female (Male to Female)
  - ☐ Trans Male (Female to Male)
  - ☐ Gender Non-conforming (i.e. not exclusively male or female)
5. Insurance
  - ☐ Medicare
  - ☐ Obamacare (Affordable Healthcare)
  - ☐ TennCare
  - ☐ No insurance
  - ☐ Private insurance
  - ☐ Other
6. County of Residence
  - ☐ Benton
  - ☐ Hardeman
  - ☐ Carroll
  - ☐ Gibson
  - ☐ Lauderdale
  - ☐ Weakley
  - ☐ Chester
  - ☐ Haywood
  - ☐ Chester
  - ☐ Hardeman
  - ☐ Madison
  - ☐ Lake
  - ☐ Crockett
  - ☐ Madison
  - ☐ Crockett
  - ☐ Hardin
  - ☐ McNairy
  - ☐ Henderson
  - ☐ Dyer
  - ☐ Weakley
  - ☐ Decatur
  - ☐ Haywood
  - ☐ Obion
  - ☐ Gibson
  - ☐ Benton
  - ☐ Dyer
  - ☐ Henry
  - ☐ Shelby

# Community Health Assessment Survey

## West Tennessee Healthcare

### 7. Race

- ☐ African/American
 ☐ American Indian/Alaskan Native  
☐ Asian
 ☐ Caucasian  
☐ Hispanic/Latino
 ☐ Indian (from India or parents from India)  
☐ Middle Eastern
 ☐ Pacific Islander/Polynesian  
☐ Other
 ☐ Not sure

### 8. Weight

- ☐ Just right
 ☐ Obese
 ☐ Overweight
 ☐ Underweight

**For the following questions, indicate if you have experienced the health issue by selecting Yes or No.**

Response Definition: Y=Yes N=No

	Y	N
9. Have you had (or do you currently have) <b>Allergies?</b>	<input type="radio"/>	<input type="radio"/>
10. Have you had (or do you currently have) <b>Arthritis?</b>	<input type="radio"/>	<input type="radio"/>
11. Have you had (or do you currently have) <b>Asthma?</b>	<input type="radio"/>	<input type="radio"/>
12. Have you had (or do you currently have) an <b>Autoimmune disease?</b>	<input type="radio"/>	<input type="radio"/>
13. Have you had (or do you currently experiencing) <b>Bullying?</b>	<input type="radio"/>	<input type="radio"/>
14. Have you had (or do you currently have) <b>Chronic Pain?</b>	<input type="radio"/>	<input type="radio"/>
15. Have you had (or do you currently have) <b>Dementia/Alzheimer's?</b>	<input type="radio"/>	<input type="radio"/>
16. Have you had (or do you currently have) <b>Diabetes?</b>	<input type="radio"/>	<input type="radio"/>
17. Have you had (or do you currently have) <b>Emphysema/COPD?</b>	<input type="radio"/>	<input type="radio"/>
18. Have you had (or do you currently have) an <b>Eye Condition (cataracts, glaucoma, masclar degeneration)?</b>	<input type="radio"/>	<input type="radio"/>
19. Have you had (or do you currently have) a <b>Fall or Fall related injury?</b>	<input type="radio"/>	<input type="radio"/>
20. Have you had (or do you currently have) <b>Hearing Loss/Deafness?</b>	<input type="radio"/>	<input type="radio"/>
21. Have you had (or do you currently have) <b>High Blood Pressure?</b>	<input type="radio"/>	<input type="radio"/>
22. Have you had (or do you currently have) <b>Osteoporosis?</b>	<input type="radio"/>	<input type="radio"/>
23. Have you had (or do you currently have) a <b>Heart Condition?</b>	<input type="radio"/>	<input type="radio"/>
24. Have you had (or do you currently have) high levels of <b>Stress?</b>	<input type="radio"/>	<input type="radio"/>
25. Have you had a <b>Stroke?</b>	<input type="radio"/>	<input type="radio"/>
<b>Have you experienced a lack of financial resources that led to problems accessing any of the following:</b>		
26. Dental care	<input type="radio"/>	<input type="radio"/>
27. Medical care	<input type="radio"/>	<input type="radio"/>
28. Medications	<input type="radio"/>	<input type="radio"/>

# Community Health Assessment Survey

## West Tennessee Healthcare

**Have you experienced a lack of transportation that led to problems accessing any of the following**

- |   | Y                     | N                     |
|---|-----------------------|-----------------------|
| 29. Dental care   | <input type="radio"/> | <input type="radio"/> |
| 30. Medical care  | <input type="radio"/> | <input type="radio"/> |
| 31. Medications   | <input type="radio"/> | <input type="radio"/> |
| 32. Do you have access to <b>Healthy Foods</b> (fresh fruits & vegetables, lean meats, whole grain products, low fat milk products) | <input type="radio"/> | <input type="radio"/> |
| 33. How far must you travel to access <b>Healthy Foods</b> listed above?  |                       |                       |
| <input type="radio"/> less than one mile  |                       |                       |
| <input type="radio"/> over one mile to three miles  |                       |                       |
| <input type="radio"/> over three miles to five miles  |                       |                       |
| <input type="radio"/> over five miles to ten miles  |                       |                       |
| <input type="radio"/> over ten miles  |                       |                       |
| 34. Do you have access to <b>Information/Education</b> about your health issues, if any?  | <input type="radio"/> | <input type="radio"/> |
| 35. Do you have access to <b>Child or Adult Care</b> ?  | <input type="radio"/> | <input type="radio"/> |
| 36. Do you have access to facilities or places for <b>Physical Activity</b> ?   | <input type="radio"/> | <input type="radio"/> |
| 37. Do you have a family history of:  |                       |                       |
| <input type="radio"/> suicide <input type="radio"/> heart failure <input type="radio"/> opioid use                                  |                       |                       |
| 38. Have you or family member had the COVID-19 vaccine?   | <input type="radio"/> | <input type="radio"/> |
| 39. Have you or family member had COVID-19?   | <input type="radio"/> | <input type="radio"/> |

**The following questions ask about difficult situations that may cause you to feel upset..if so please talk with someone you consider safe or contact a health professional or counselor.**

**Prior to your 18th birthday, did you experience and of the following?**

- |   | Y                     | N                     |
|---|-----------------------|-----------------------|
| 40. Did a parent or other adult in the household often swear at you, insult you, put you down or humiliate you? OR act in a way that made you afraid that you might be physically harmed?             | <input type="radio"/> | <input type="radio"/> |
| 41. Did an adult or person at least 5 years older than you ever touch or fondle you or have you touch their body in a sexual way? OR try to have oral, anal, or vaginal sex with you?                 | <input type="radio"/> | <input type="radio"/> |
| 42. Did you often feel that no one in your family loved you or thought you were important or special? OR Your family didn't look out for each other, feel close to each other, or support each other? | <input type="radio"/> | <input type="radio"/> |
| 43. Did a parent or other adult in the household often push, grab, slap, or throw something at you? OR ever hit you so hard that you had marks or were injured?                                       | <input type="radio"/> | <input type="radio"/> |
| 44. Were your parents ever separated or divorced?   | <input type="radio"/> | <input type="radio"/> |



# Community Health Assessment Survey

## West Tennessee Healthcare



45. Was your mother or stepmother often pushed, grabbed, slapped or had something thrown at her? OR sometimes or often kicked, bitten, hit with a fist, or hit with something hard? OR ever repeatedly hit or at least a few minutes or threatened with a gun or knife? Y   N  
☐ ☐
46. Did you live with anyone who was a problem drinker or alcoholic or used street drugs? ☐ ☐
47. Was a household member depressed or mentally ill or did a household member ever attempt suicide? ☐ ☐
48. Did a household member ever go to prison? ☐ ☐
49. Did you often feel that you didn't have enough to eat, had to wear dirty clothes, or had no one to protect you? OR your parents were too drunk or high to take care of you or take you to the doctor if you needed it? ☐ ☐



# Community Needs Assessment Results

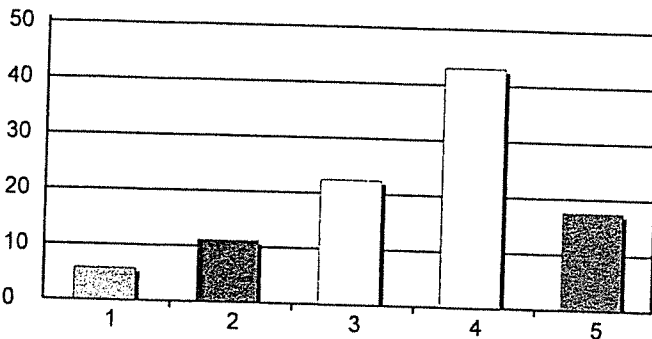
## May 2, 2021

Creation Date: 5/2/2021

Time Interval: 3/28/2021 to 5/2/2021

Total Respondents: 1895

### 1. Age



1. 18-24
2. 25-35
3. 36-50
4. 51-64
5. 65+

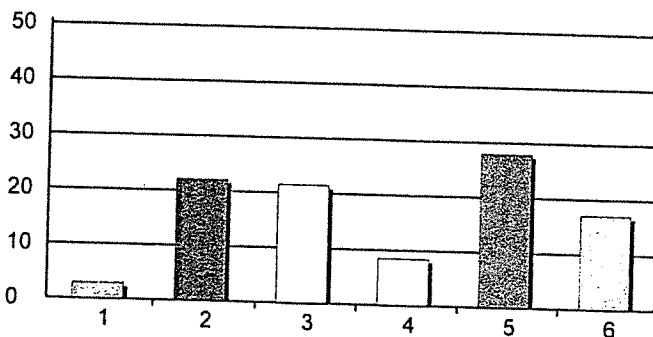
109	6%
211	11%
423	22%
811	43%
331	18%

Total Responses:

Mean: 3.55 Standard Deviation: 1.08

1885

### 2. Education



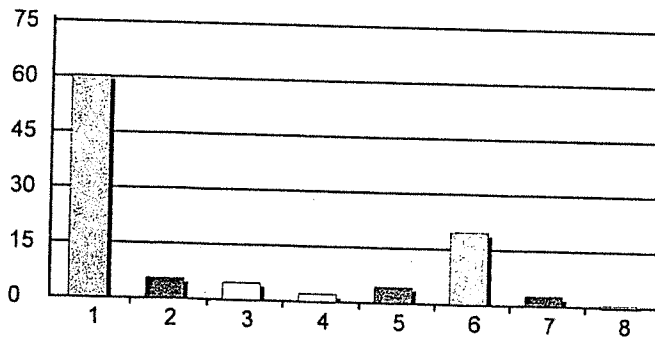
1. Less than high school
2. High school graduate/GED
3. Some college
4. Associate degree
5. Bachelor degree
6. Advanced degree

53	3%
409	22%
396	21%
156	8%
516	28%
316	17%

Total Responses:

1846

### 3. Employment Status



1. Employed full time
2. Employed part time
3. Homemaker full time
4. Not working because of acute illness or injury
5. Permanently disabled
6. Retired
7. Student full time
8. Student part time

1090	60%
101	6%
84	5%
38	2%
80	4%
357	20%
51	3%
10	1%

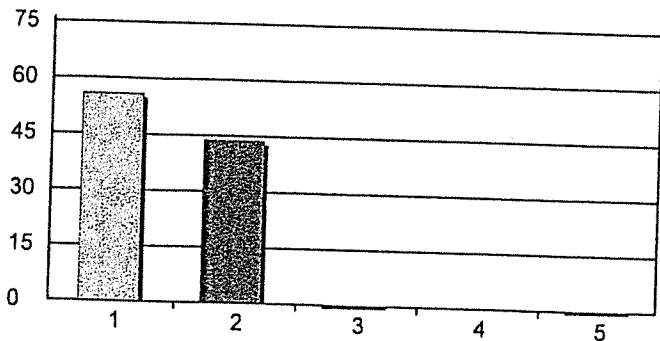
Total Responses:

1811

# Community Needs Assessment Results

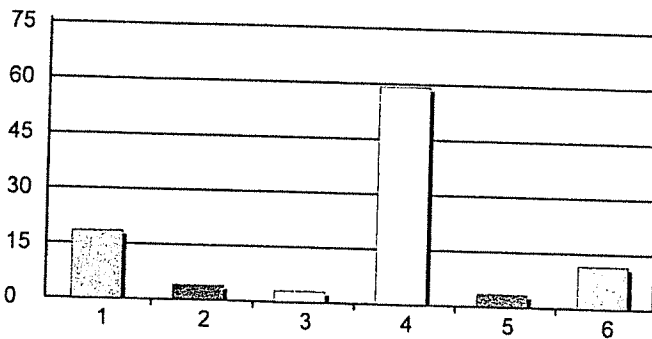
## May 2, 2021

### 4. Gender



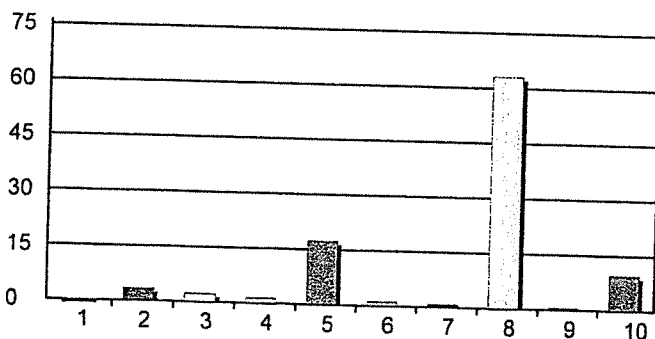
1. Female	1048	56%
2. Male	821	44%
3. Trans Female (Male to Female)	2	0%
4. Trans Male (Female to Male)	0	0%
5. Gender Non-conforming (i.e. not exclusively m...	4	0%
Total Responses:	1875	
Mean: 1.45	Standard Deviation: 0.52	

### 5. Insurance



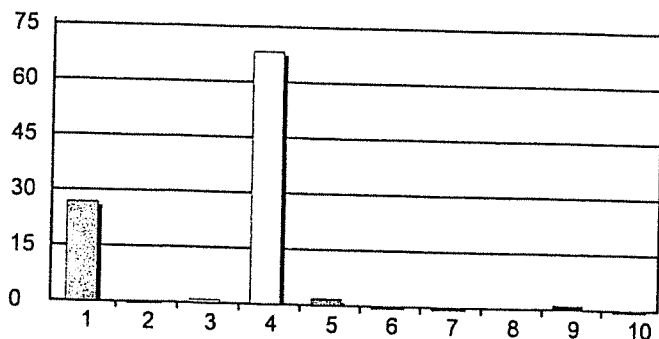
1. Medicare	338	19%
2. No insurance	75	4%
3. Obamacare (Affordable Healthcare)	54	3%
4. Private insurance	1081	59%
5. TennCare	65	4%
6. Other	213	12%
Total Responses:	1826	

### 6. County of Residence



1. Benton	2	0%
2. Chester	64	3%
3. Crockett	42	2%
4. Dyer	25	1%
5. Gibson	328	17%
6. Hardeman	22	1%
7. Haywood	17	1%
8. Madison	1192	63%
9. Weakley	13	1%
10. Other	183	10%
Total Responses:	1888	
Mean: 7.27	Standard Deviation: 1.88	

### 7. Race

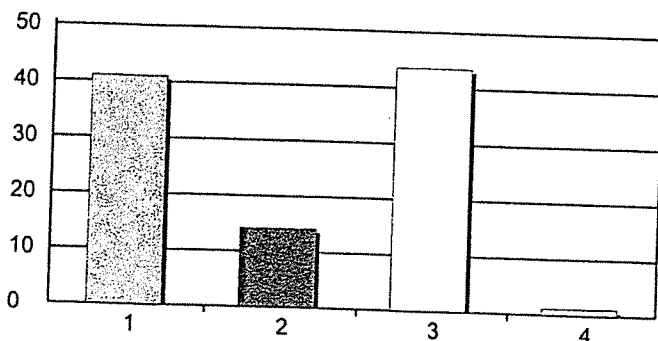


1. African/American	490	27%
2. American Indian/Alaskan Native	7	0%
3. Asian	16	1%
4. Caucasian	1248	68%
5. Hispanic/Latino	33	2%
6. Indian (from India or parents from India)	4	0%
7. Middle Eastern	4	0%
8. Pacific Islander/Polynesian	0	0%
9. Other	23	1%
10. Not sure	5	0%
Total Responses:	1830	

# Community Needs Assessment Results

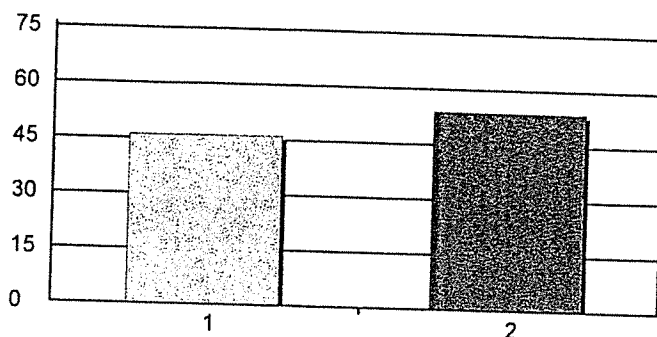
## May 2, 2021

### 8. Weight



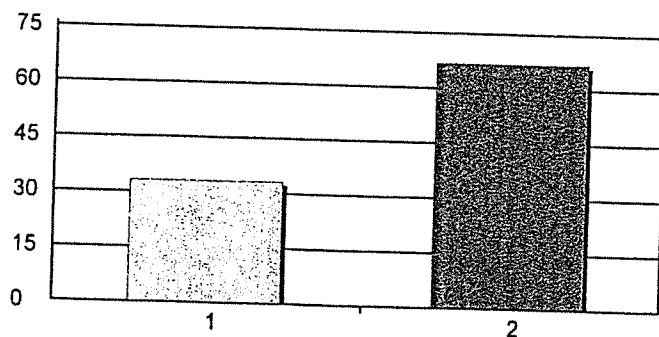
1. Just right	659	41%
2. Obese	229	14%
3. Overweight	699	44%
4. Underweight	18	1%
Total Responses:	1605	

### 9. Have you had (or do you currently have) Allergies?



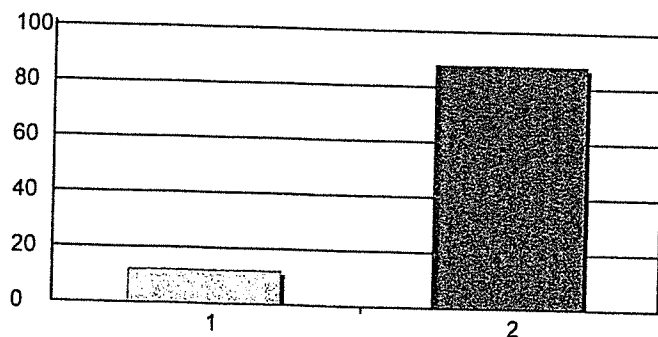
1. Yes	865	46%
2. No	1011	54%
Total Responses:	1876	
Mean: 1.54	Standard Deviation: 0.50	

### 10. Have you had (or do you currently have) Arthritis?



1. Yes	621	33%
2. No	1250	67%
Total Responses:	1871	
Mean: 1.67	Standard Deviation: 0.47	

### 11. Have you had (or do you currently have) Asthma?

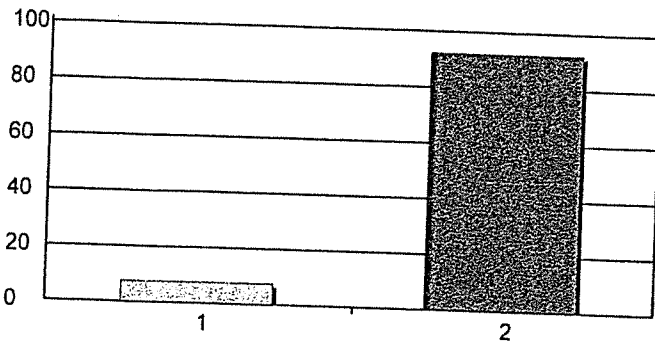


1. Yes	226	12%
2. No	1654	88%
Total Responses:	1880	
Mean: 1.88	Standard Deviation: 0.33	

# Community Needs Assessment Results

## May 2, 2021

12. Have you had (or do you currently have) an Autoimmune disease?



1. Yes

2. No

Total Responses:

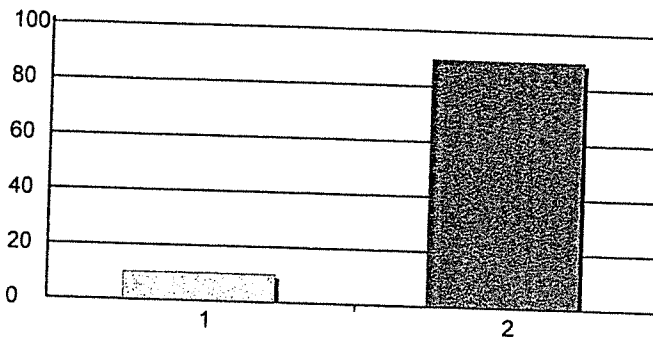
Mean: 1.92 Standard Deviation: 0.26

141 8%

1729 92%

1870

13. Have you had (or do you currently experiencing) Bullying?



1. Yes

2. No

Total Responses:

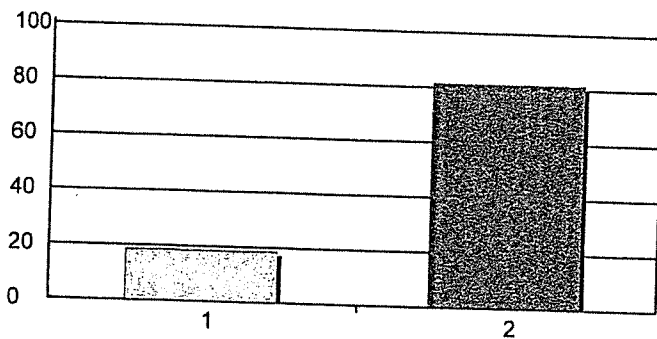
Mean: 1.90 Standard Deviation: 0.30

188 10%

1679 90%

1867

14. Have you had (or do you currently have) Chronic Pain?



1. Yes

2. No

Total Responses:

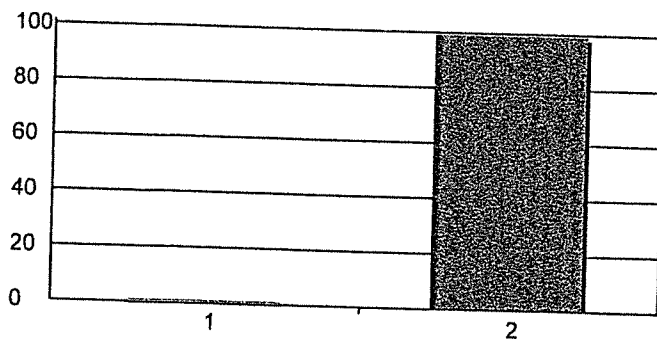
Mean: 1.82 Standard Deviation: 0.39

347 18%

1532 82%

1879

15. Have you had (or do you currently have) Dementia/Alzheimer's?



1. Yes

2. No

Total Responses:

Mean: 1.99 Standard Deviation: 0.09

15 1%

1859 99%

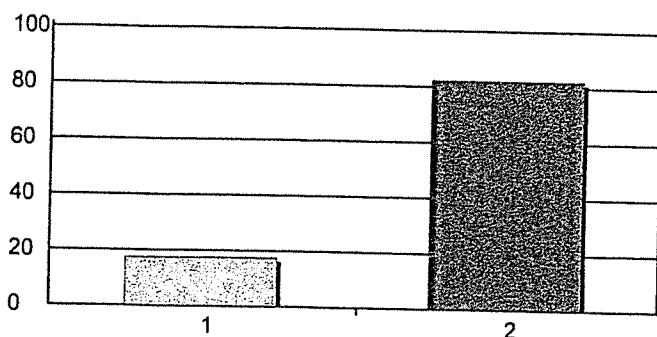
1874



# Community Needs Assessment Results

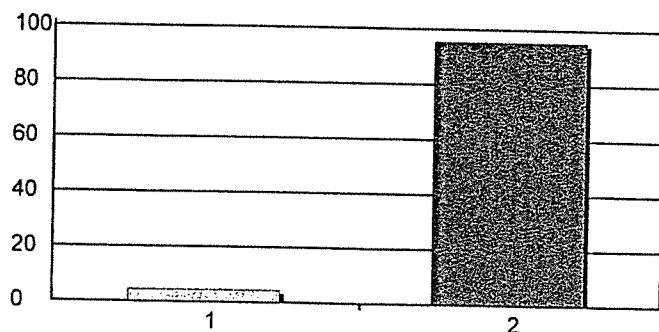
## May 2, 2021

16. Have you had (or do you currently have) Diabetes?



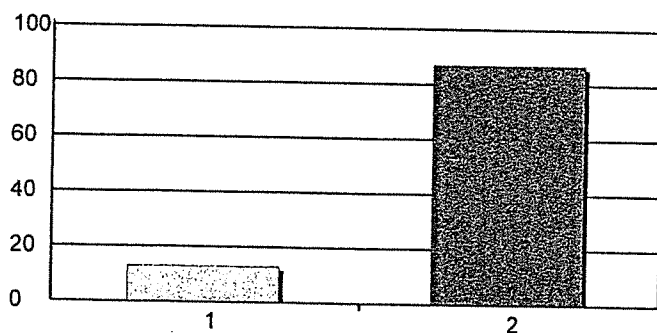
1. Yes 329 18%  
 2. No 1544 82%  
 Total Responses: 1873  
 Mean: 1.82 Standard Deviation: 0.38

17. Have you had (or do you currently have) Emphysema/COPD?



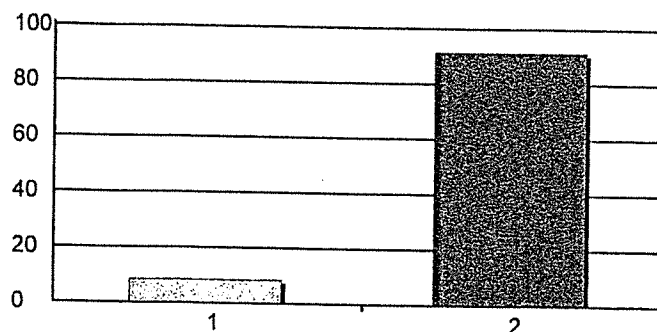
1. Yes 83 4%  
 2. No 1787 96%  
 Total Responses: 1870  
 Mean: 1.96 Standard Deviation: 0.21

18. Have you had (or do you currently have) an Eye Condition (cataracts, glaucoma, macular degeneration)?



1. Yes 243 13%  
 2. No 1631 87%  
 Total Responses: 1874  
 Mean: 1.87 Standard Deviation: 0.34

19. Have you had (or do you currently have) a Fall or Fall related injury?

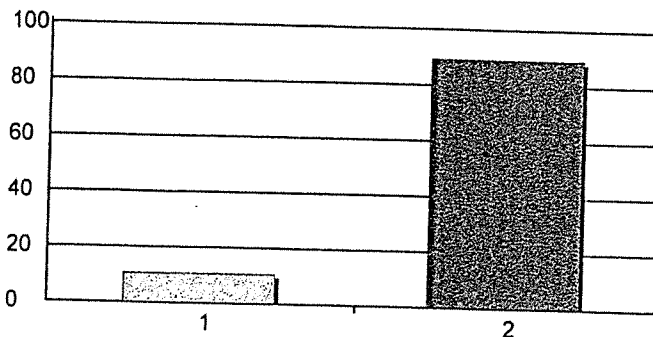


1. Yes 159 8%  
 2. No 1720 92%  
 Total Responses: 1879  
 Mean: 1.92 Standard Deviation: 0.28

# Community Needs Assessment Results

## May 2, 2021

20. Have you had (or do you currently have) **Hearing Loss/Deafness**?



1. Yes

199 11%

2. No

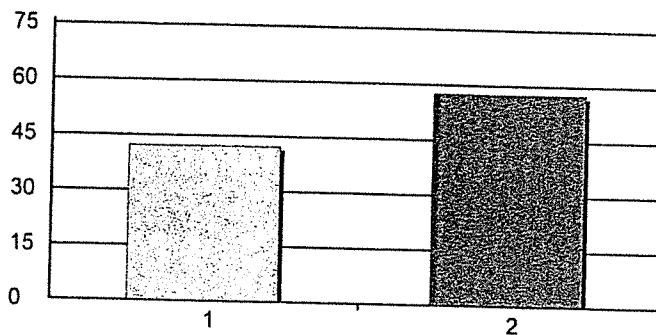
1676 89%

Total Responses:

1875

Mean: 1.89 Standard Deviation: 0.31

21. Have you had (or do you currently have) **High Blood Pressure**?



1. Yes

790 42%

2. No

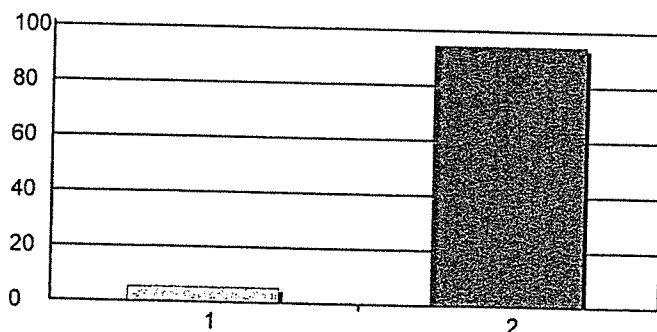
1078 58%

Total Responses:

1868

Mean: 1.58 Standard Deviation: 0.49

22. Have you had (or do you currently have) **Osteoporosis**?



1. Yes

101 5%

2. No

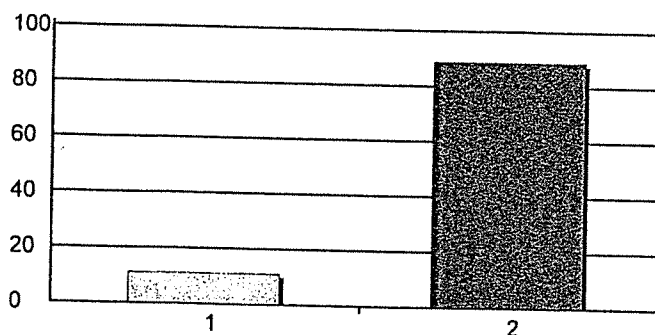
1770 95%

Total Responses:

1871

Mean: 1.95 Standard Deviation: 0.23

23. Have you had (or do you currently have) a **Heart Condition**?



1. Yes

208 11%

2. No

1665 89%

Total Responses:

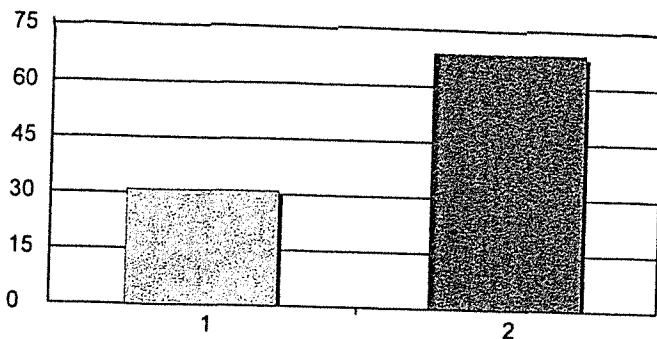
1873

Mean: 1.89 Standard Deviation: 0.31

# Community Needs Assessment Results

## May 2, 2021

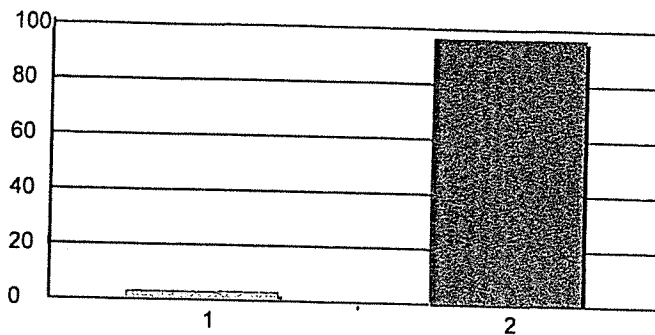
24. Have you had (or do you currently have) high levels of Stress?



1. Yes  
2. No  
Total Responses:  
Mean: 1.69 Standard Deviation: 0.46

581 31%  
1293 69%  
1874

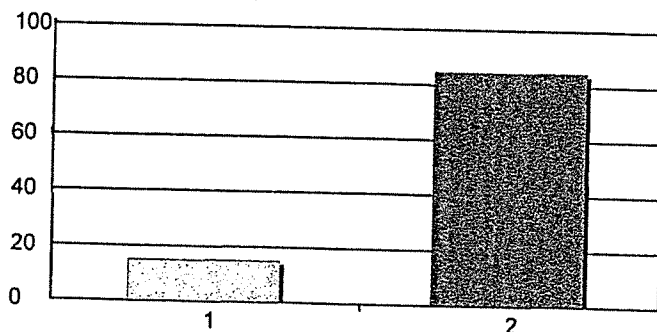
25. Have you had a Stroke?



1. Yes  
2. No  
Total Responses:  
Mean: 1.97 Standard Deviation: 0.18

62 3%  
1806 97%  
1868

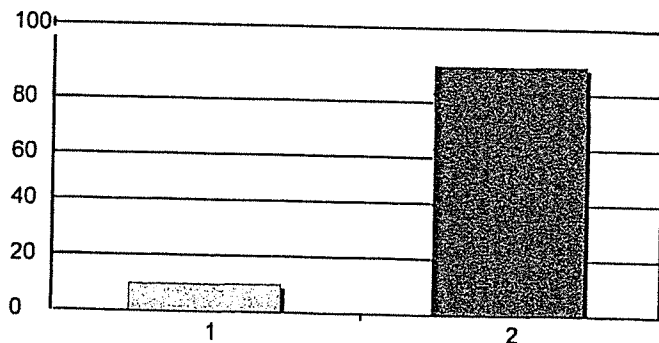
26. Lack of financial resources for: Dental care



1. Yes  
2. No  
Total Responses:  
Mean: 1.85 Standard Deviation: 0.36

279 15%  
1585 85%  
1864

27. Lack of financial resources for: Medical care



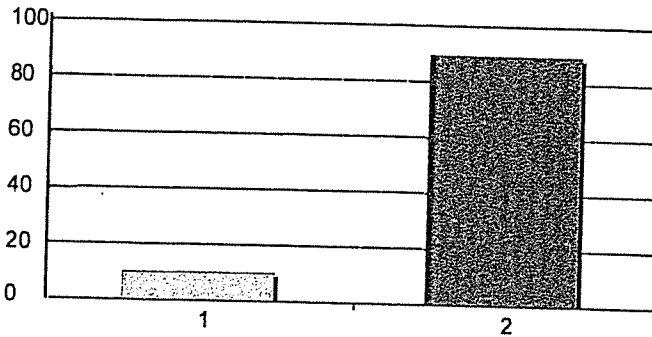
1. Yes  
2. No  
Total Responses:  
Mean: 1.90 Standard Deviation: 0.30

185 10%  
1673 90%  
1858

# Community Needs Assessment Results

## May 2, 2021

### 28. Lack of financial resources for: Medications



1. Yes

189 10%

2. No

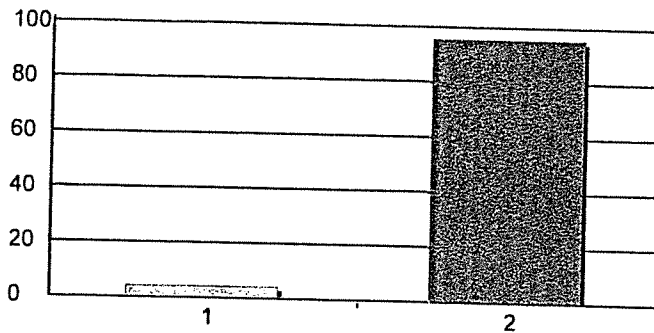
1664 90%

Total Responses:

1853

Mean: 1.90 Standard Deviation: 0.30

### 29. Lack transportationDental care



1. Yes

82 4%

2. No

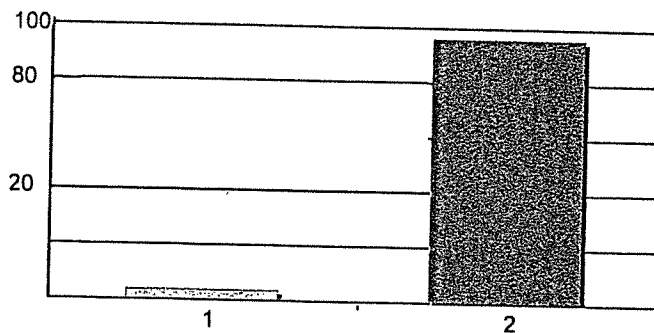
1774 96%

Total Responses:

1856

Mean: 1.96 Standard Deviation: 0.21

### 30. Lack transportation: Medical care



1. Yes

72 4%

2. No

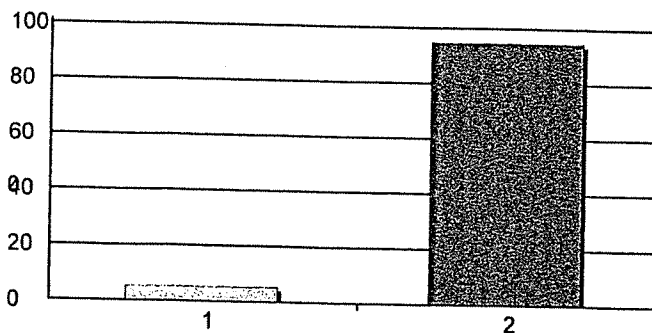
1781 96%

Total Responses:

1853

Mean: 1.96 Standard Deviation: 0.19

### 31. Lack transportation: Medications



1. Yes

96 5%

2. No

1734 95%

Total Responses:

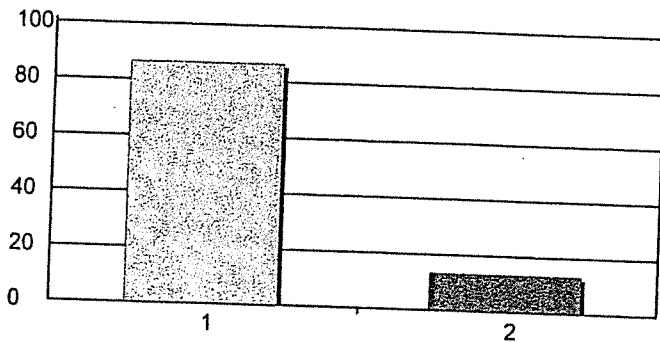
1830

Mean: 1.95 Standard Deviation: 0.22

# Community Needs Assessment Results

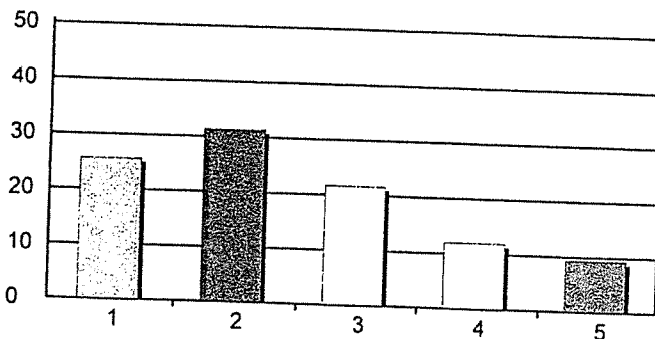
## May 2, 2021

32. Do you have access to **Healthy Foods** (fresh fruits & vegetables, lean meats, whole grain products, low fat milk products)



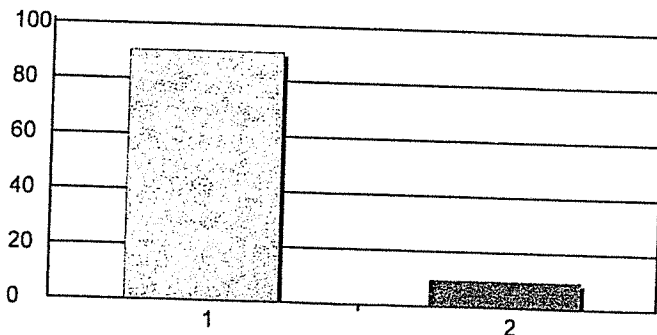
1. Yes 1510 86%  
 2. No 236 14%  
 Total Responses: 1746  
 Mean: 1.14 Standard Deviation: 0.34

33. Mileage How far must you travel to access Healthy Foods?



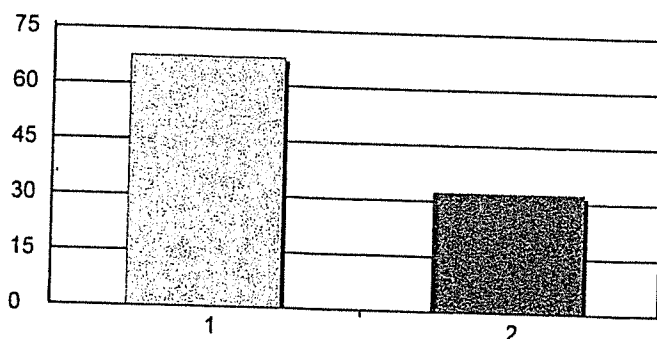
1. less than one mile 450 26%  
 2. over one mile to three miles 550 31%  
 3. over three miles to five miles 379 22%  
 4. over five miles to ten miles 210 12%  
 5. over ten miles 164 9%  
 Total Responses: 1753  
 Mean: 2.48 Standard Deviation: 1.25

34. Mileage Do you have access to information about your health issues?



1. Yes 1665 90%  
 2. No 177 10%  
 Total Responses: 1842  
 Mean: 1.10 Standard Deviation: 0.29

35. Mileage Do you have access to Adult or Child Care?

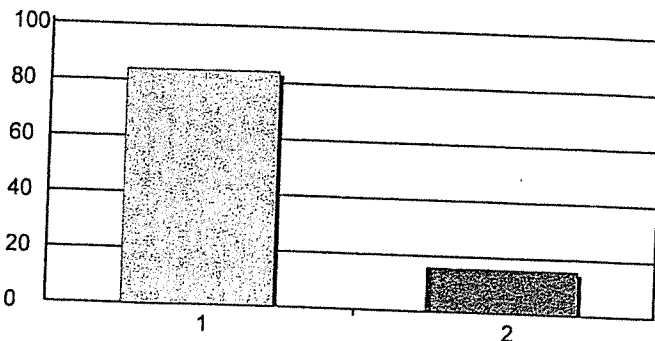


1. Yes 1181 68%  
 2. No 566 32%  
 Total Responses: 1747  
 Mean: 1.32 Standard Deviation: 0.47

# Community Needs Assessment Results

## May 2, 2021

36. Mileage Do you have access to facilities for physical activity?



1. Yes

2. No

Total Responses:

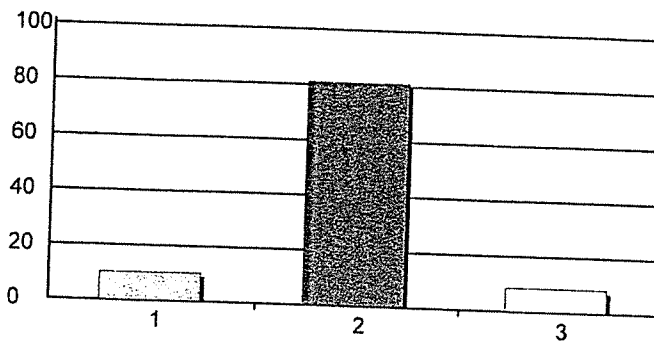
Mean: 1.16 Standard Deviation: 0.37

1520 84%

288 16%

1808

37. Mileage Do you have a family history of:



1. suicide

2. heart failure

3. opioid use

Total Responses:

Mean: 1.98 Standard Deviation: 0.43

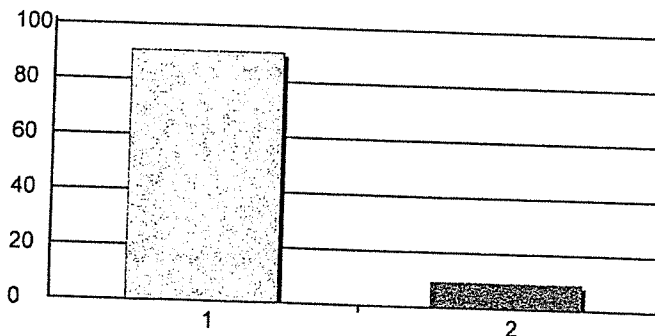
59 10%

463 81%

49 9%

571

38. Mileage Have you or family member had COVID-19 vaccine?



1. Yes

2. No

Total Responses:

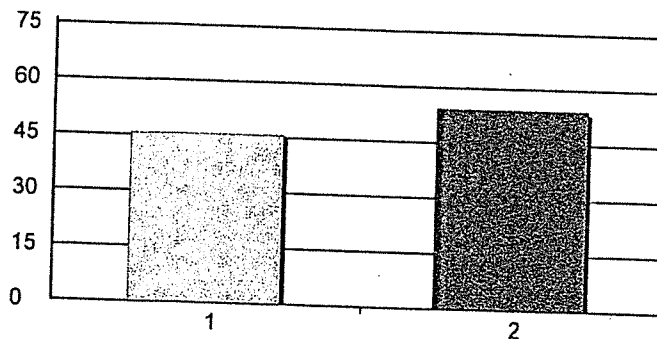
Mean: 1.09 Standard Deviation: 0.29

1671 91%

173 9%

1844

39. Mileage Have you or family member had COVID-19?



1. Yes

2. No

Total Responses:

Mean: 1.54 Standard Deviation: 0.50

844 46%

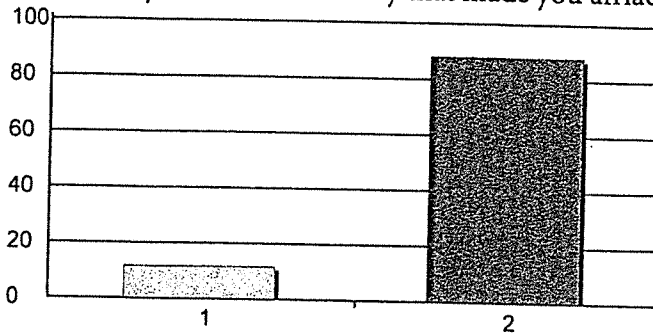
1004 54%

1848

# Community Needs Assessment Results

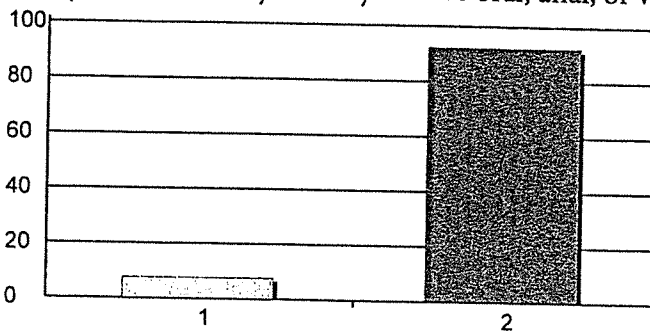
## May 2, 2021

40. Mileage Did a parent or other adult in the household often swear at you, insult you, put you down, or humiliate you? OR act in a way that made you afraid that you might be physically harmed?



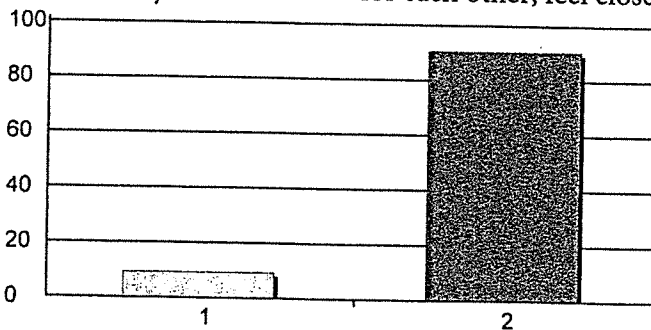
Total Responses: 1822  
Mean: 1.88 Standard Deviation: 0.32

41. Mileage Did an adult or person at least 5 years older than you ever touch or fondle you or have you touch their body in a sexual way? OR try to have oral, anal, or vaginal sex with you?



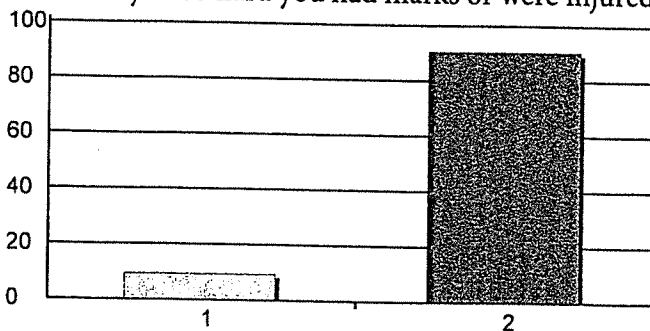
Total Responses: 1808  
Mean: 1.92 Standard Deviation: 0.27

42. Mileage Did you often feel that no one in your family loved you or thought you were important or special? OR Your family didn't look out for each other, feel close to each other, or support each other?



Total Responses: 1812  
Mean: 1.91 Standard Deviation: 0.29

43. Mileage Did a parent or other adult in the household often push, grab, slap, or throw something at you? OR ever hit you so hard you had marks or were injured?

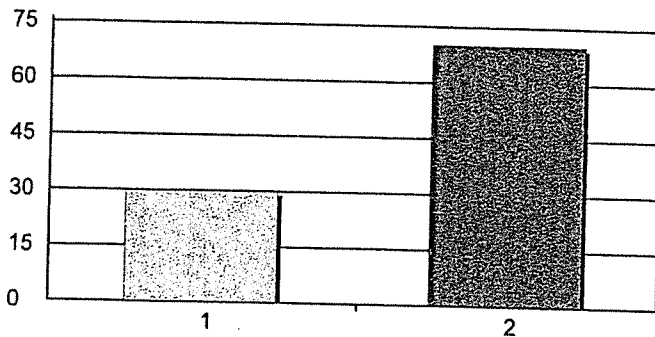


Total Responses: 1811  
Mean: 1.91 Standard Deviation: 0.29

# Community Needs Assessment Results

## May 2, 2021

44. Mileage Were your parents ever separated or divorced?



1. Yes

543 30%

2. No

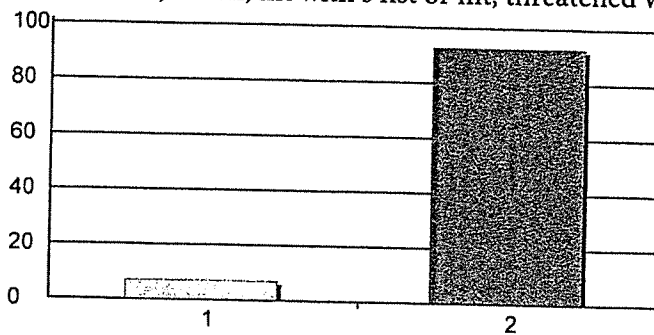
1276 70%

Total Responses:

1819

Mean: 1.70 Standard Deviation: 0.46

45. Mileage Was your mother or stepmother often pushed, grabbed, slapped, or had something thrown at her? Or kicked, bitten, hit with a fist or hit, threatened with a gun or knife?



1. Yes

126 7%

2. No

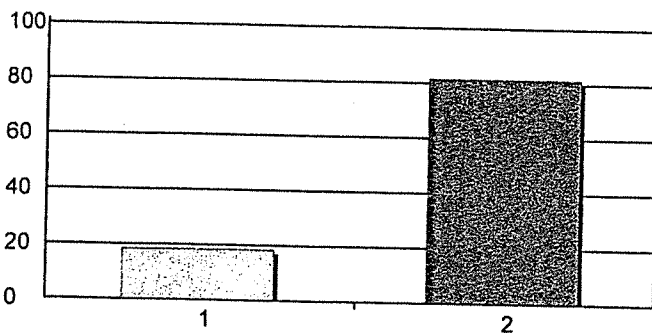
1660 93%

Total Responses:

1786

Mean: 1.93 Standard Deviation: 0.26

46. Mileage Did you live with anyone who was a problem drinker or alcoholic, or used street drugs?



1. Yes

328 18%

2. No

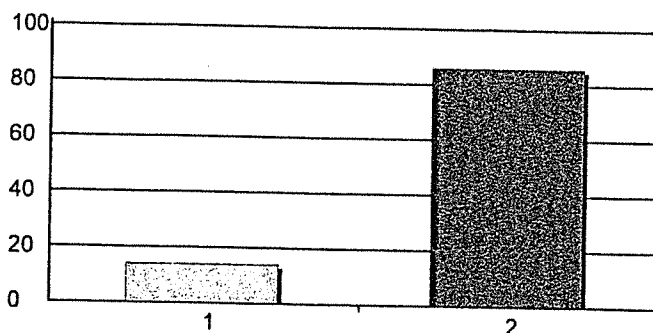
1461 82%

Total Responses:

1789

Mean: 1.82 Standard Deviation: 0.39

47. Mileage Was a household member depressed or mentally ill or did a household member ever attempt suicide?



1. Yes

251 14%

2. No

1547 86%

Total Responses:

1798

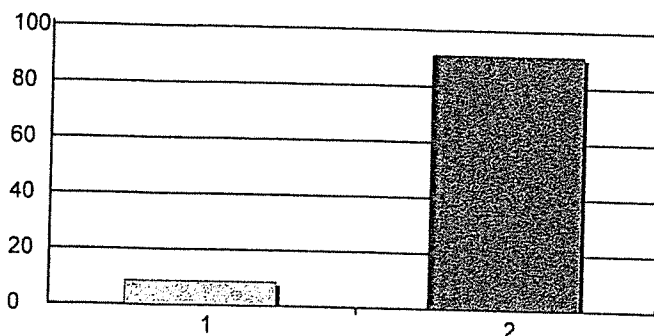
Mean: 1.86 Standard Deviation: 0.35



# Community Needs Assessment Results

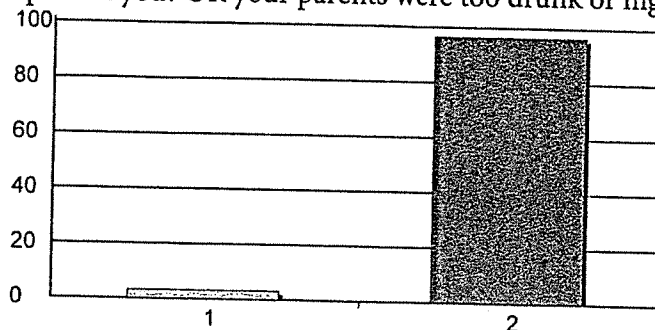
## May 2, 2021

48. Mileage Did a household member every go to prison?



1. Yes 156 9%  
 2. No 1643 91%  
 Total Responses: 1799  
 Mean: 1.91 Standard Deviation: 0.28

49. Mileage Did you often feel that you did not have enough to eat, had to wear dirty clothes, or had no one to protect you? OR your parents were too drunk or high to take care of you or take you to the



1. Yes 58 3%  
 2. No 1743 97%  
 Total Responses: 1801  
 Mean: 1.97 Standard Deviation: 0.18  
 doctor?