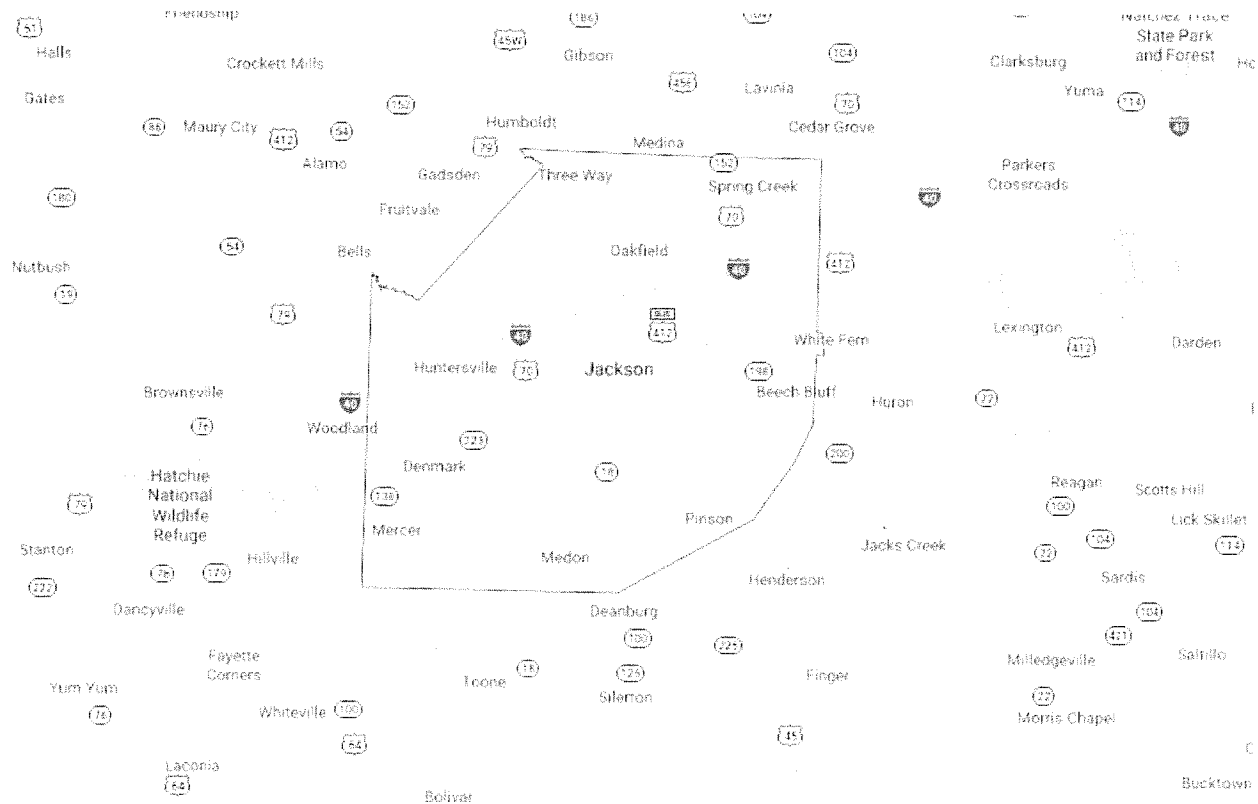


# **Community Health Needs Assessment**

## **Madison County, Tennessee**



**Conducted by:**

**Department of Community Development**

**Victoria S. Lake**

**Update October 2021**

**In fulfillment of requirements of the Patient Protection and Affordable Care Act  
Pub.L.No.111-148, 124 Stat. 119, enacted March 23, 2010; and Department of Treasury  
Internal Revenue Service 26 CFR Parts 1, 53, and 62 *Additional Requirements for  
Charitable Hospitals; Community Health Needs Assessments for Charitable Hospitals;  
Requirement of a Section 4959 Excise Tax Return and Time for filing the Return.***

RESOLUTION OF THE BOARD OF TRUSTEES  
OF  
JACKSON-MADISON COUNTY GENERAL HOSPITAL DISTRICT  
AND  
CAMDEN GENERAL HOSPITAL, INC.  
AND  
BOLIVAR GENERAL HOSPITAL, INC.  
AND  
MILAN GENERAL HOSPITAL, INC.  
AND  
DYERSBURG HEALTH  
AND  
MARTIN HEALTH  
AND  
PATHWAYS OF TENNESSEE, INC.

COMMUNITY HEALTH NEEDS ASSESSMENT APPROVAL

WHEREAS, the Patient Protection and Affordable Care Act, enacted March 10, 2010, requires public and not-for-profit hospitals to perform a Community Health Needs Assessment for each hospital; and

WHEREAS, the staff of the District has conducted such an Assessment and prepared the report as required for each of its hospitals; and

WHEREAS, the Assessments were prepared in accordance with IRS rules and regulations, as amended, regarding Community Health Needs Assessments for Tax Exempt Hospitals; and

WHEREAS, the Board finds that the Assessments substantially meet the requirements of the of the Patient Protection and Affordable Care Act and the applicable IRS rules and regulations, and that the Implementation Strategies set forth in the Assessments shall be implemented in accordance with Management recommendations.

NOW, THEREFORE, BE IT RESOLVED, that the Community Health Needs Assessments given to the Board are approved and adopted.

ADOPTED, this the 26th day of October, 2021.

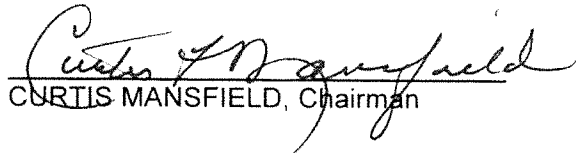
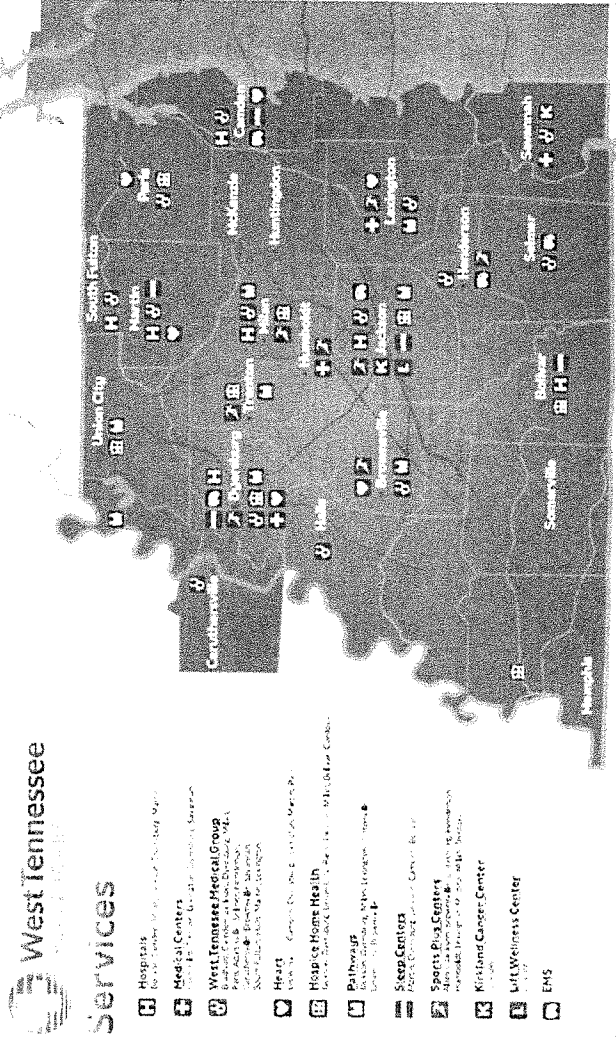
  
CURTIS MANSFIELD, Chairman

EXHIBIT: 2-5



# 2021 Community Health Needs Assessment

Executive Summary

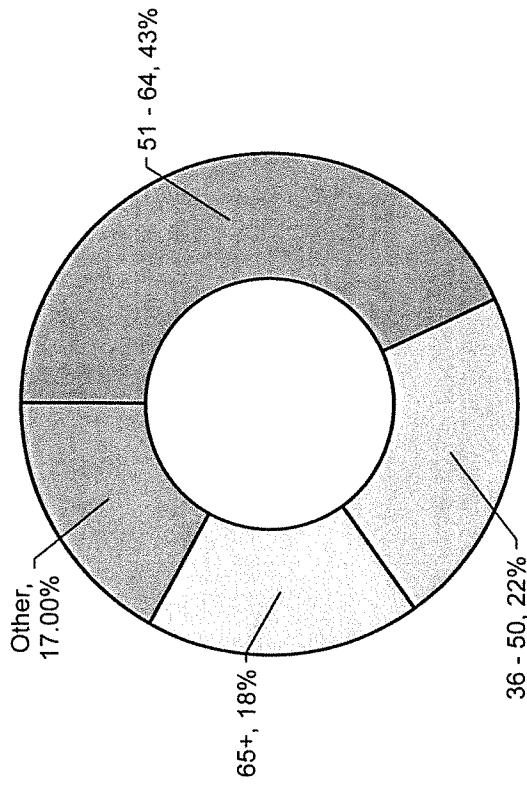


# Methodology

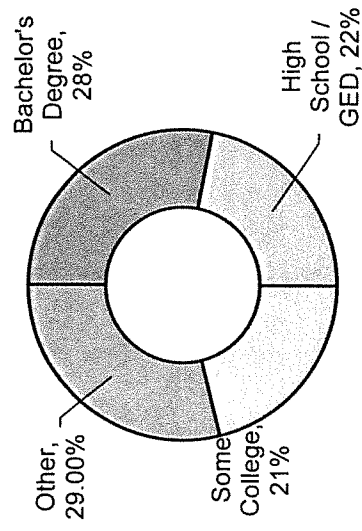
- The first stage of the Update process involved gathering secondary data from multiple sources for each county.
- The second step in the Community Health Needs Assessment Update process consisted of creating a survey to collect data from residents on local health issues. The survey consisted of 49 questions that asked basic demographics of age, race, education level, insurance, county of residence, presence or absence of specific health issues, access to care, physical activity, health information, and ten questions on adverse childhood experiences prior to 18th birthday. Respondents were requested to answer a simple “yes” or “no” to specific health issues and adverse childhood experiences.
- The survey instrument was distributed by hand during community wide COVID-19 vaccination clinics at Lane College and Humboldt Medical Center on March 20, 2021; and Jackson-Madison County General Hospital on March 30, 2021. **Data from 1,895 completed surveys was collected.**

# Respondents

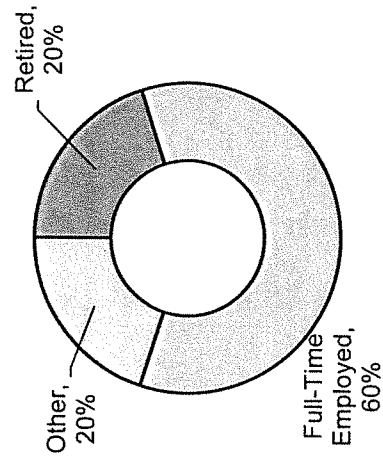
By Age



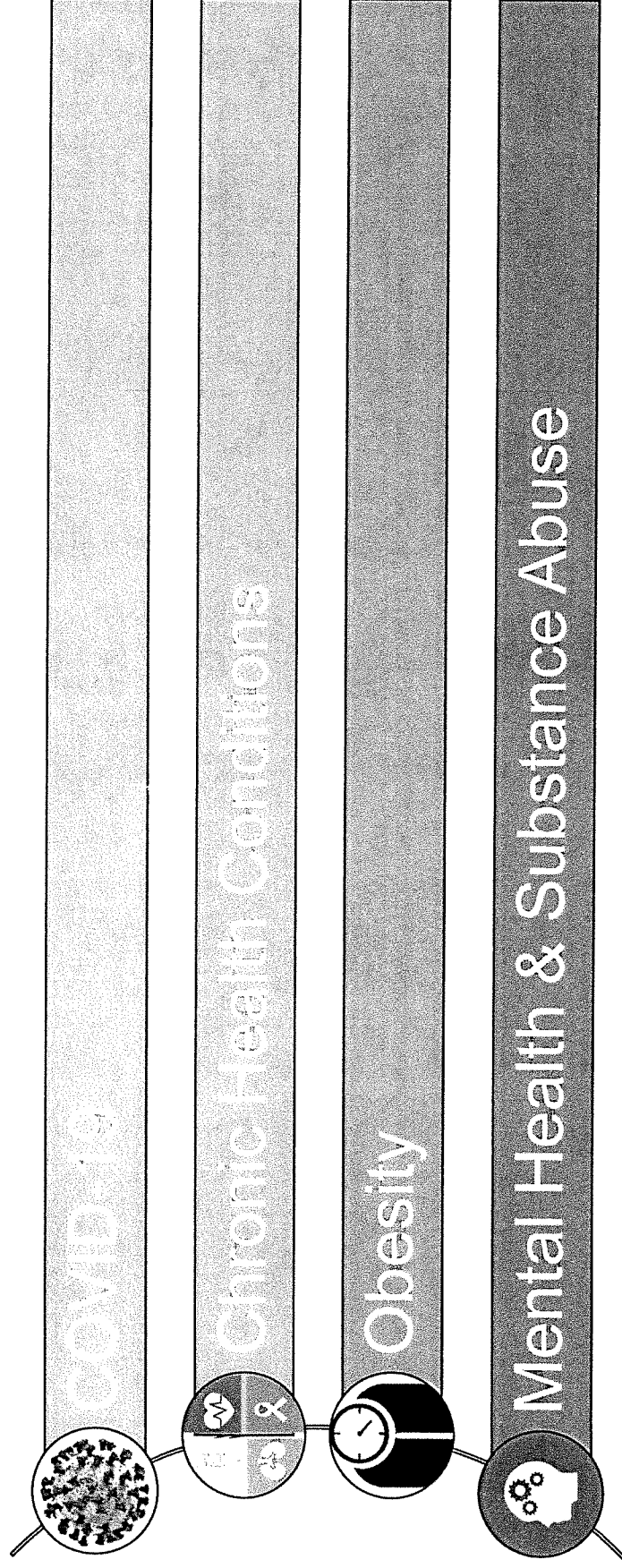
Education Level



Employment Status



# Priority Health Issues Acute Care



# Priority Behavioral Health Issues Pathways

Depression

Domestic Violence/Victim Management

Co-Occurring Mental Health & Substance Abuse

Alcohol, Drug, and Prescription Drug Abuse (emphasis on Opioid Crisis)

Suicide



## **Table of Contents**

West Tennessee Healthcare Community Needs Assessment Summary 2021	1
Introduction	2
Description of the Hospital and Community	2
Description of Community Health Needs Assessment Update Process	4
Results of Survey	6
Survey Respondent Demographics	7
Results of Secondary Data Analysis	11
Priority Health Issues	14
Conclusion	15

Attachment A	Secondary Data
Attachment B	Summary-Secondary Data
Attachment C	Community Health Assessment Survey Instrument
Attachment D	Community Health Assessment Survey Results

## West Tennessee Healthcare Community Health Needs Assessment Summary 2021

Needs assessments were completed in fulfillment of requirements of the Patient Protection and Affordable Care Act Pub.L.No.111-148, 124 Stat. 119, enacted March 23, 2010; and Department of Treasury Internal Revenue Service 26 CFR Parts 1, 53, and 62 *Additional Requirements for Charitable Hospitals; Community Health Needs Assessments for Charitable Hospitals; Requirement of a Section 4959 Excise Tax Return and Time for filing the Return.*

Assessments were conducted for Madison, Benton, Chester, Crockett, Dyer, Gibson, Haywood, Hardeman, Weakley, and for Pathways as a mental health hospital. This document reflects work for the Madison County Community Health Needs Assessment.

The 2021 needs assessments were update of those conducted in 2012, 2015, and 2018. Because of high volumes of COVID-19, this is a limited needs assessment conducted by a committee of West Tennessee Healthcare staff. Tennessee Department of Health Community Health Councils are not meeting on a regular basis due to COVID-19 so input from community representatives was not available. Jackson-Madison County General Hospital and other community agencies are conducting very little community outreach efforts. WTH staff will reconvene the Needs Assessment Committee in 2022, and upon consultation with the Health Council, will update outreach strategies.

The first stage of the Update process involved gathering secondary data from multiple sources for each county. The second step in the Community Health Needs Assessment Update process consisted of creating a survey to collect data from residents on local health issues. The survey consisted of 49 questions that asked basic demographics of age, race, education level, insurance, county of residence, presence or absence of specific health issues, access to care, physical activity, health information, and ten questions on adverse childhood experiences prior to 18<sup>th</sup> birthday. Respondents were requested to answer a simple “yes” or “no” to specific health issues and adverse childhood experiences.

The survey instrument was distributed by hand during community wide COVID-19 vaccination clinics at Lane College and Humboldt Medical Center on March 20, 2021; and Jackson-Madison County General Hospital on March 30, 2021. Data from 1,895 completed surveys was collected.

Sixteen WTH staff and two members from Quality Council were asked to serve on an Internal Committee to review secondary and survey data. Surveys were distributed at several locations, and data were requested on basic respondent demographics. The age group 51 to 64 represented 43 percent of respondents, followed by age 36 to 50 (22 percent), and age 65 and older (18 percent). The predominant education level is respondents with a Bachelors degree (28 percent), followed by high school graduate/ GED (22 percent) and some college (21 percent). Sixty percent (60 percent) of respondents were working full time and 20 percent were retired. A majority of individuals completing the survey were women (56 percent), had private health insurance (59 percent), and were Caucasian (68 percent).

Upon a review of survey responses and secondary data, four priority health issues were identified.

COVID-19

Chronic Health Conditions

Obesity

Mental Health and Substance Abuse Issues

Pathways Issues

Depression

Domestic Violence/Anger Management

Co-Occurring Mental Health & Substance Abuse

Alcohol, Drug, and Prescription Drug Abuse (emphasis on Opioid Crisis)

Suicide

## **Introduction**

Under the leadership of Jackson-Madison County General Hospital, a community health needs assessment was conducted in 2021. The needs assessment was completed in fulfillment of requirements of the Patient Protection and Affordable Care Act Pub.L.No.111-148, 124 Stat. 119, enacted March 23, 2010; and Department of Treasury Internal Revenue Service 26 CFR Parts 1, 53, and 62 *Additional Requirements for Charitable Hospitals; Community Health Needs Assessments for Charitable Hospitals; Requirement of a Section 4959 Excise Tax Return and Time for filing the Return.*

This 2021 needs assessment is an update of those conducted in 2012, 2015, and 2018. Because of high volumes of COVID-19, this is a limited needs assessment conducted by a committee of West Tennessee Healthcare staff. Tennessee Department of Health Community Health Councils are not meeting on a regular basis due to COVID-19 so input from community representatives was not available. Jackson-Madison County General Hospital and other community agencies are conducting very little community outreach efforts. The Hospital will reconvene the Needs Assessment Committee in 2022, and upon consultation with the Health Council, will update outreach strategies. The process used to conduct this limited assessment is described in the following pages.

## **Description of the Hospital and Community**

Owned by the Jackson-Madison County General Hospital District, the Jackson-Madison County General Hospital was created by the Tennessee General Assembly through a Private Act in 1949. The Hospital opened on August 11, 1950 with 123 beds. In 2018, the District acquired the former Regional Hospital of Jackson from Community Health Systems, Inc. Renamed West Tennessee Healthcare North Hospital with 150 licensed beds, it is a satellite hospital of Jackson - Madison County General Hospital. Jackson General, at 620 Skyline Drive is licensed for 642 beds, and together both facilities, 792 beds. Jackson-Madison County General Hospital serves patients and families through the Tennessee Heart and Vascular Center, Alice and Carl Kirkland Cancer Center, Ayers Children's Medical Center, West Tennessee Women's Center, West Tennessee Neuroscience and Spine Center, and Emergency Services. Jackson-Madison County

General Hospital is a public, not-for-profit organization with approximately 4,100 employees. The Hospital is licensed by the State of Tennessee Department of Health and is fully accredited by The Joint Commission.

The Private Act, 1949 specified that the Jackson-Madison County General Hospital District was “created and established for and I behalf of the City of Jackson, Tennessee, and Madison County. With a 2020 Decennial population of 98,823, Madison County is located in the center of rural West Tennessee, approximately 85 miles East of Memphis and 125 miles West of Nashville via Interstate 40. The population is 4.8 percent Hispanic and 95.2 percent Other Races. According to the Tennessee Department of Economic & Community Development (2021), 18.5 percent of persons in households have incomes below the Federal poverty level. The per capita personal income level is \$44,135. The population between 18 and 64 years of age represents 61.0 percent of the total. The population age 65 and older is 16.4 percent of the total. About 9.2 percent of the population age 25 and older does not have a high school degree; 90.8 percent have a high school degree or higher; and 34.4 have a Bachelor’s degree of higher.

Madison County has a wide range of advanced manufacturing industries that employ individuals living in and around Madison County. The Pringles Manufacturing Company employs 900 at the plant. Delta Faucet Company (800 employees), City of Jackson (715 employees), Porter-Cable Corporation (650 employees), TBDN Tennessee Company (470 employees), Gerdau Ameristeel US, Inc. (400 employees), and Pinnacle Foods Group, LLC (293 employees).

The community has eight colleges and universities: Jackson State Community College (4,718 students), Union University (3,466 students), Tennessee College of Applied Technology-Jackson (1,486 students), Lane College, a Historical Black College (1,427 students), University of Memphis Lambuth (1,285 students), Bethel University and University of Tennessee Martin.

The county seat of Madison County is Jackson, Tennessee. The City of Jackson, Madison County Government, and Jackson-Madison County School System are all located in Jackson. The public school system has 26 schools, serving 12,724 schools.

### **Description of Community Health Needs Assessment Update Process**

The mission of the Community Health Needs Assessment is to evaluate and improve the health status and wellbeing of residents in Jackson-Madison County, Tennessee with an emphasis on preventive measures. The community health needs assessment was a review of survey results and secondary data identifying state and regional health data.

The Community Health Needs Assessment had ten (10) organizational goals.

1. To form alliances between Jackson-Madison County General Hospital, non-profit organizations, and the community at large to assess, improve, and promote the community health of Jackson-Madison County, Tennessee.
2. To identify internal resources already available to assist in improving community health.
3. To assist in identifying available community resources.
4. To define “health” as it pertains to Jackson-Madison County, Tennessee.
5. To identify collaborative partners.
6. To educate and gain formal support of West Tennessee Healthcare leadership team, Board of Trustees, community leaders, and others.
7. To assist in establishing baseline health status assessment of Jackson-Madison County by collecting and reviewing available secondary data and statistics from resident surveys.
8. To assist in determining standards against which to measure current and future health status of the community.
9. To assist in communitywide establishment of health priorities and in facilitating collaborative planning, actions, and direction to improve community health status and quality of life.
10. To promote the need for ongoing evaluation of the community health assessment process to learn results, establish new goals and encourage further community action and involvement.

The first stage of the Update process involved gathering secondary data from multiple sources including the Tennessee Department of Health, County Health Rankings and Roadmaps, Tennessee Department of Economic & Community Development, Tennessee Department of

Mental Health and Substance Abuse Services, Tennessee Bureau of Investigation, Centers of Disease Control and Prevention, Tennessee Behavioral Health County and Region Services Data Book, Tennessee Department of Health. Behavioral Risk Factor Surveillance System, and Traumatic Brain Injury Program. These data are presented in **Attachment A**.

The second step in the Community Health Needs Assessment Update process consisted of creating a survey to collect data from residents on local health issues. The survey consisted of 49 questions that asked basic demographics of age, race, education level, insurance, county of residence, presence or absence of specific health issues, access to care, physical activity, health information, and ten questions on adverse childhood experiences prior to 18<sup>th</sup> birthday.

Respondents were requested to answer a simple “yes” or “no” to specific health issues and adverse childhood experiences. **Attachment B** has a summary of secondary data.

The survey instrument was distributed by hand during community wide COVID-19 vaccination clinics at Lane College and Humboldt Medical Center on March 20, 2021; and Jackson-Madison County General Hospital on March 30, 2021. Data from 1,895 completed surveys was collected. **Attachment C** contains a copy of the survey instrument, and **Attachment D** has a copy of the survey results.

An internal committee of West Tennessee Healthcare staff were identified to participate in the update process.

Vicki Lake	Department of Community Development
Rose Bailey	Department of Diversity, Health Equity, and Operational Excellence
Ruby Kirby	WTH Bolivar Hospital and WTH Camden Hospital
Joyce Noles	Emergency Services
Deena Kail	West Tennessee Women’s Center, Ayers Children’s Medical Center
Gina Miracle	Alice and Carl Kirkland Cancer Center
Melissa Walls	Virtual Care
Frank McMeen	West Tennessee Healthcare Foundation
Anna Tetleton Burns	Primary Care Clinics
Miki Martin	LIFT
LeAnn Childress	LIFT Therapy
Pam Henson	Pathways Behavioral Health Services
Betty Haskins	WTH Camden Hospital

Scott Barber	WTH Dyersburg Hospital
Sherry Scruggs	WTH Milan Hospital
Kevin Decker	WTH Volunteer Hospital

Tina Prescott	Administration
Vanessa Patrick	Administration

### Results of Survey (N=1,895)

Health prevalence was identified by the percentage of respondents indicating they had experienced a specific medical issue. Figure 1 contains the ranking according to prevalence among respondents.

Figure 1: Health Issue Prevalence

Allergies	46%	Lack of financial resources: dental care	15%
High Blood Pressure	42%	Lack of financial resources: medical care	10%
Arthritis	33%	Lack of financial resources: medications	10%
Stress	31%	Lack of transportation: medications:	5%
Chronic Pain	18%	Lack of transportation: dental care	4%
Diabetes	18%	Lack of transportation: medical care	4%
Eye Conditions	14%		
Asthma	12%	No access to adult or child care	32%
Hearing Loss	11%	No access to physical activity facilities	16%
Heart Conditions	11%	No access to healthy foods	14%
Bullying	10%		
Autoimmune Disease	8%	Family history of heart failure	81%
Fall Injuries	8%	Family history of suicide	10%
Osteoporosis	5%	Family history of opioid use	9%
COPD	4%		
Stroke	3%	COVID-19 Vaccination Experienced	91%
Dementia/Alzheimers	1%	COVID-19	46%

### Survey Respondent Demographics

Surveys were distributed at several locations, and data were requested on basic respondent demographics. The age group 51 to 64 represented 43 percent of respondents, followed by age 36 to 50 (22 percent), and age 65 and older (18 percent) (Figure 2). The predominant education level is respondents with a Bachelors degree (28 percent), followed by high school graduate/ GED (22 percent) and some college (21 percent) (Figure 3). Sixty percent (60 percent) of respondents were working full time and 20 percent were retired (Figure 4). A majority of individuals completing the survey were women (56 percent) (Figure 5), had private health insurance (59 percent) (Figure 6), and were Caucasian (68 percent) (Figure 7).

Figure 2: Age Distribution

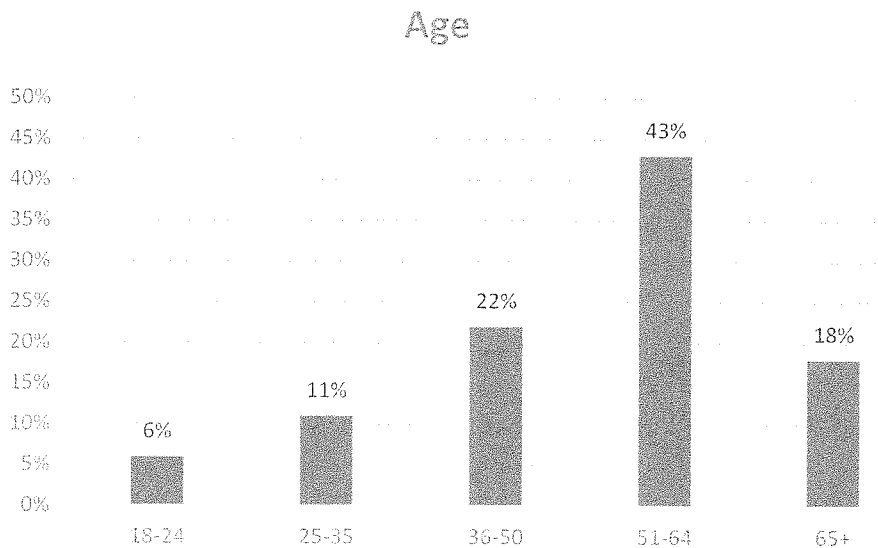




Figure 3: Education Levels

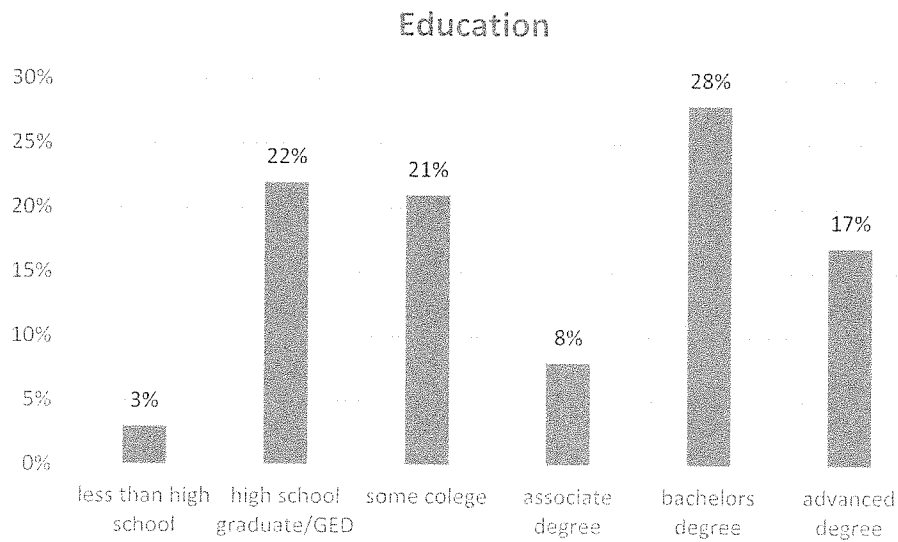


Figure 4: Employment Status

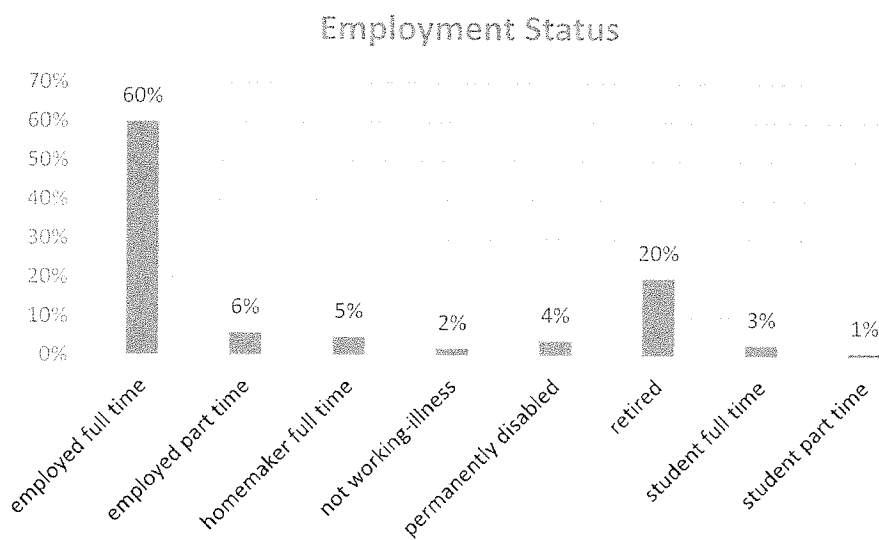


Figure 5: Gender

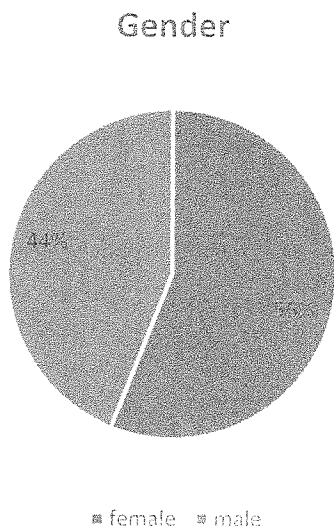


Figure 6: Insurance Coverage

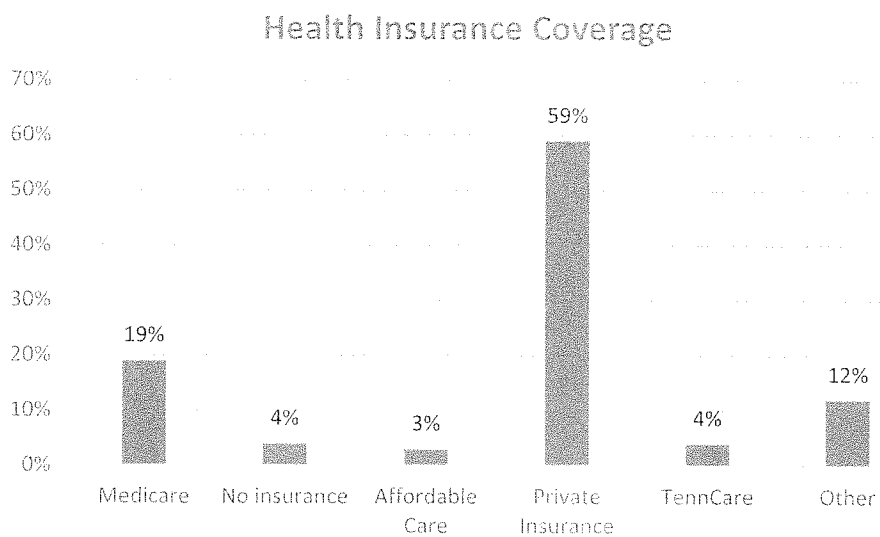
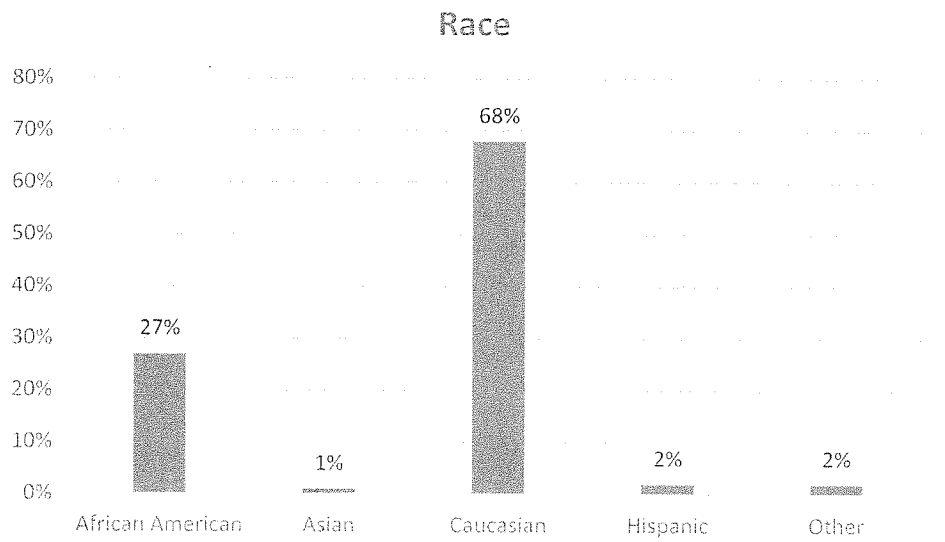


Figure 7: Race



### Results of Secondary Data Analysis

The West Tennessee Healthcare Committee reviewed secondary data, focusing on indicators where the county consistently had higher rates, percentages, volumes than the state as a whole. For Madison County, heart disease deaths, children in poverty, obesity, cerebrovascular deaths, diabetes deaths, and drug-related issues were consistently higher than the State of Tennessee as a whole.

Table 1: Deaths from Diseases of the Heart Per 100,000

Death from Diseases of the Heart Per 100,000						
Rate	Madison			TN		
	Total	White	Black	Total	White	Black
2018	251.0	253.5	268.7	242.5	263.2	199.7
2017	270.4	305.1	233.1	238.4	259.5	193.8
2016	252.9	302.2	190.5	232.1	249.9	196.8
2015	271.5	293.4	238.8	237.5	252.8	190.1
2014	223.1	269.2	163.7	232.0	250.8	189.3
2013	211.7	251.9	160.2	226.7	245.1	183.1
2012	222.0	263.9	167.2	220.6	241.2	165.2
2011	240.2	288.8	175.9	221.0	239.7	175.3
2010	251.3	312.6	176.8	228.3	254.0	181.8
2009	229.7	261.0	176.7	228.0	241.1	185.8
2008	224.6	245.6	188.0	238.2	250.4	199.9
2007	213.1	223.6	196.3	233.2	244.1	201.0

Source: Tennessee Department of Health.

Table 2: Percent of Children Under 18 in Poverty

Children in Poverty-Percent of children under 18 in poverty		
	Madison	TN
2020	29	22
2019	25	21
2018	27	23
2017	29	24
2016	29	26
2015	30	27
2014	27	26

2013	32	27
2012	30	26
2011	22	22
2010	24	23

Source: 2017 Tennessee Behavioral Health County and Region Services Data Book

Table 3: Body Mass Index Greater than 30-Overweight or Obese

**Percent of Adults who have a body mass index greater than 30-overweight or obese**

	Madison	TN
2020	39	33
2019	36	33
2018	35	32
2017	34	32
2016	36	32
2015	37	32
2014	36	32
2013	34	32
2012	34	32
2011	32	31
2010	31	31

Source: Robert Wood Johnson Foundation and University of Wisconsin Population Health Institute.

Table 4: Deaths from Cerebrovascular Disease Per 100,000

**Deaths from Cerebrovascular Disease per 100,000**

**RATE**

	Total	Madison White	Black	Total	TN White	Black
2018	55.3	71.2	35.3	51.7	54.5	49.9
2017	65.5	71.1	62.3	52.4	55.2	50.1
2016	59.4	67.3	51.7	52.8	55.1	52.6
2015	46.6	57.5	32.6	52.2	53.9	49.8
2014	44.8	51.1	38.2	50.7	53.1	48.4
2013	46.6	57.5	32.6	48.1	50.5	45.8
2012	50.7	43.7	65.8	46.3	48.6	42.9
2011	51.9	58.4	44.7	50.1	52.8	46.2

2010	53.9	65.3	42.1	50.1	54.3	45.6
2009	60.0	63.7	54.8	50.6	51.9	48.2
2008	74.9	67.3	92.5	53.6	54.3	54.2
2007	60.0	59.8	62.3	56.3	57.9	52.5

Source: Tennessee Department of Health.

Table 5: Deaths from Diabetes

**Deaths from Diabetes per 100,000**

	Total	Madison White	Black	Total	TN White	Black
2018	42.0	50.4	32.6	29.9	29.4	38.0
2017	39.9	31.2	54.2	28.5	28.1	36.1
2016	33.8	31.1	40.8	28.4	27.5	37.3
2015	50.2	51.5	52.1	27.1	26.6	32.8
2014	38.7	35.8	46.4	26.3	25.8	33.5
2013	23.3	22.0	27.2	27.9	27.1	36.8
2012	34.5	26.9	49.3	28.2	27.4	36.7
2011	26.5	18.4	41.9	27.1	26.3	35.7
2010	19.3	13.7	30.9	26.4	26.4	35.0
2009	29.5	18.6	51.8	28.2	26.8	37.7
2008	25.6	25.0	27.7	28.2	26.6	38.2
2007	33.1	22.0	56.1	27.8	26.4	36.4

Source: Tennessee Department of Health.

Table 6: Drug Related Issues

**Rate of Opioid Prescriptions-Number Per 1,000 persons**

	Madison Co	TN	US
2018	966.5	901.1	587.0
2017	1073.9		
2016	1597.7		
2015	1687.8		
2014	1698.6		

Source: Informatics & Analytics Centers for Disease Control & Prevention.

Number of drug related arrests for adults over 18 in Madison County

2019	1284
2018	1350
2017	999
2016	887
2015	719
2014	700

Source: Tennessee Bureau of Investigation

In addition to these issues COVID-19 data for Madison County was reviewed as of August 23, 2021. Madison County has experienced 13,971 positive cases. Of this figure, 374 have been hospitalized, 257 individuals have died, and 12,406 have recovered.

### **Priority Health Issues**

Upon a review of survey responses and secondary data, four priority health issues were identified.

COVID-19

Chronic Health Conditions

Obesity

Mental Health and Substance Abuse Issues

## **Conclusion**

The Madison County Community Health Needs Assessment was presented to the West Tennessee Healthcare Quality Council on Tuesday, September 21, 2021. The document was approved for submission to the West Tennessee Healthcare Board of Trustees and approved on October 26, 2021.

The Hospital Committee will reconvene in 2022 to collaborate with the Tennessee Department of Health County Health Council and will update this report with identified strategies.

This report is submitted as required in the Patient Protection and Affordable Care Act Pub.L.NO.111-148, 124 Stat. 119, enacted March 23, 2010, requiring updating every three years.



**Madison County Community Health Assessment  
Update of Size of Health issues 2021-Update 2-2021  
Prioritization of Health Issues**

Population	97,984
Age 65 +	17.6
Caucasian	58.9
African American	37.7
Latino	4.1
High School Graduates	88.9
B.S. Degree or Higher	88.9
Disability< Age 65	25.6
Median HH Income	\$ 48,161
PerCapita Income	\$ 26,722

**Number Receiving Behavioral Safety Net Services**

2015	2016	2017	2018	2019	2020
546	465	478	492	560	

**Face to Face Crisis Service Assessments**

1,701	2,246	2,280	2,520	2,035
-------	-------	-------	-------	-------

Source: Tennessee Department of Mental Health & Substance Abuse Services

**Frequent mental distress 2014-2016-14 percent**

**Alcohol Use**

**Excessive Drinking-**

	Madison	TN
2020	13	14
2019	12	14
2018	12	14
2017	11	11
2016	11	12
2015	10	9
2014	10	9
2013	10	10
2012	8	9
2011	8	9

Source: Robert Wood Johnson Foundation and University of Wisconsin Population Health Institute.

**Rate of Opioid Prescriptions-Number Per 1,000 persons**

	Madison Co	TN	US
2018	966.5	901.1	587.0
2017	1073.9		
2016	1597.7		
2015	1687.8		
2014	1698.6		

Source: Informatics & Analytics Centers for Disease Control & Prevention.

Number of drug related arrests for adults over 18 in Madison County

2019	1284
2018	1350
2017	999
2016	887
2015	719
2014	700

Source: Tennessee Bureau of Investigation

### Allergies

1 in 5 Americans suffer from all types of allergies

Allergies have increased in prevalence since the 1980s across age, sex, racial groups.

19.2 million diagnosed with hay fever

Annual costs from allergies \$18 billion

Annual costs from food allergies \$25 billion

About 200,000 emergency room visits each year from food allergies

Approximately 50 million people experience allergies.

Allergies are the 6th leading chronic disease among all ages.

Source: Asthma and Allergy Foundaion of America; Centers for Disease Control and Prevention

### Arthritis, Rheumatoid Arthritis, Gout, Lupus, or Fibromyalgia?

Effects one in every 2 age 65+

3 of 5 have under age 65

Risk Factors

women

obesity

age

joint injuries

genetic predisposition

infections

certain occupations

## Asthma

- \*Number of adults aged 18 and over who currently have asthma: 19.2 million
- \*Percent of adults aged 18 and over who currently have asthma: 7.7%
- \*Number of children under age 18 years who currently have asthma: 5.5 million
- \*Percent of children under age 18 years who currently have asthma: 7.5%
- \*Number of physician office visits with asthma as a primary diagnosis: 9.8 million
- \*Number of emergency department visits with asthma as a primary diagnosis: 1.6 million
- \*Number of deaths: 3,524
- \*Deaths per 100,000 population: 1.1

\*Asthma is a chronic inflammation of the lung airways that causes coughing, chest tightness, wheezing or shortness of breath

\*8.3% of Americans have asthma. Of these 26.5 million, 20.4 million are adults and 6.1 million are children

\*Asthma prevalence is higher in children (9.4 percent) than in adults (7.7 percent), and higher in females (9.2 percent) than males (7.0 percent)

\*Patients with asthma reported 11 million visits to a doctor's office and 1.7 million visits to hospital outpatient departments

\*Asthma results in 439,000 hospitalizations and 1.3 million emergency room visits annually.

\*Asthma is the most common chronic illness in childhood, accounting for 13.8 million missed school days each year. It also accounts for 14.2 million lost work days for adults.

\*The estimated economic cost of asthma is \$56 billion annually.

\*More than 3,500 people die of asthma each year, nearly half of whom are age 65 or older

\*Asthma symptoms can be triggered by exposure to an allergen

\*Asthma is often hereditary.

\*Weather conditions such as extremely dry, wet or windy weather can worsen asthma conditions

Source: Centers for Disease Control and Prevention.

## Cancer

### Deaths from Malignant Neoplasms Per 100,000

	Madison			TN		
	Total	White	Black	Total	White	Black
2018	204.9	225.7	181.8	208.8	226.9	170.7
2017	232.5	272.2	187.0	212.8	230.6	173.1
2016	236.5	279.7	182.4	217.5	235.1	178.0
2015	197.7	226.5	161.9	214.8	229.5	170.4
2014	227.1	247.1	201.9	216.1	231.8	182.4
2013	189.4	202.9	179.2	214.5	231.0	176.4
2012	198.7	210.1	191.9	211.2	226.5	176.3
2011	175.1	198.7	148.0	210.2	224.6	180.1

2010	229.9	266.2	196.4	212.9	234.6	178.9
2009	187.0	208.2	152.4	216.2	226.9	183.5
2008	191.8	200.2	181.8	213.3	225.0	174.6
2007	182.1	201.5	146.4	215.3	226.1	180.1

Source: Tennessee Department of Health.

### **COPD, Emphysema, or Chronic Bronchitis**

About 9.7 percent of Tennessee population have COPD.

Respondents were more likely to report COPD ( $p < 0.05$ ) if they

- Were female.
- Were unable to work.
- Had not graduated from high school.
- Had a household income of \$25,000 or less.
- Had a history of smoking (current or former).
- Had a history of asthma.

Respondents were less likely to report COPD ( $p < 0.05$ ) if they

- Were aged 44 years or younger.
- Were male.
- Had never smoked.
- Had no history of asthma.

Source: COPD Foundation; Centers for Disease Prevention and Control

### **Diabetes**

#### **Deaths from Diabetes per 100,000**

	Madison			TN		
	Total	White	Black	Total	White	Black
2018	42.0	50.4	32.6	29.9	29.4	38.0
2017	39.9	31.2	54.2	28.5	28.1	36.1
2016	33.8	31.1	40.8	28.4	27.5	37.3
2015	50.2	51.5	52.1	27.1	26.6	32.8
2014	38.7	35.8	46.4	26.3	25.8	33.5
2013	23.3	22.0	27.2	27.9	27.1	36.8
2012	34.5	26.9	49.3	28.2	27.4	36.7
2011	26.5	18.4	41.9	27.1	26.3	35.7
2010	19.3	13.7	30.9	26.4	26.4	35.0
2009	29.5	18.6	51.8	28.2	26.8	37.7
2008	25.6	25.0	27.7	28.2	26.6	38.2
2007	33.1	22.0	56.1	27.8	26.4	36.4

Source: Tennessee Department of Health.

#### **Percentage of Population Diagnosed with Diabetes**

Madison                      TN

2020	14	13
2019	13	13
2018	13	13
2017	14	13
2016	13	12
2015	13	12
5014	13	11
2013	12	11
2012	12	11
2011	11	11

Source: Robert Wood Johnson Foundation and University of Wisconsin

#### Dental Care

Tennessee ranks 38th for dental care. Oral cancer from tobacco use accounts for 75 to 90 percent of oral cancer. **About 22 percent of adults and 10 percent of children smoke in Tennessee.**

People do not visit a dentist because of cost (70%) and fear (25%).

Madison County is a federal Health Professional Shortage Area for dental care.

Christ Community Health Services ID 64799947D6 Score 25 Non-Rural

Low Income Population and Entire County ID 6479395852 Score 17 Partially Rural

#### Financial Resources

##### Children in Poverty-Percent of children under 18 in poverty

	Madison	TN
2020	29	22
2019	25	21
2018	27	23
2017	29	24
2016	29	26
2015	30	27
2014	27	26
2013	32	27
2012	30	26
2011	22	22
2010	24	23

Source: 2017 Tennessee Behavioral Health County and Region Services Data Book

##### Uninsured Adults-Percent Population Under Age 65 without health insurance

	Madison	TN
2020	10	11
2019	9	11
2018	11	12
2017	13	14
2016	15	16
2015	16	16
2014	21	21
2013	20	21
2012	20	20
2011	18	19
2010	13	15

#### Percent Children Living in Single-Parent households

	Madison	TN
2020	45	35
2019	44	35
2018	43	36
2017	43	36
2016	42	36
2015	44	36
2014	42	35
2013	46	35
2012	45	35
2011	40	34

Source: Robert Wood Johnson Foundation and University of Wisconsin Population Health Institute.

Source: Tennessee Department of Health. Behavioral Risk Factor Surveillance System.

#### All People in Poverty-Percent

	Madison	TN
2020	17.6	17.6

Source: Census City County QuickFacts

#### Unemployment

	Madison	TN	US
20-Nov	5.6	5.3	6.7
19-Nov	3.3	3.3	3.5
2017	3.4	3.2	4.1
2016	5.1	5.1	4.7
2015	5.6	5.5	5.0
2014	6.4	6.6	5.6

Source: Tennessee Department of Labor & Workforce Development

#### Heart Conditions

**Death from Diseases of the Heart Per 100,000**

Rate

	Madison			TN		
	Total	White	Black	Total	White	Black
2018	251.0	253.5	268.7	242.5	263.2	199.7
2017	270.4	305.1	233.1	238.4	259.5	193.8
2016	252.9	302.2	190.5	232.1	249.9	196.8
2015	271.5	293.4	238.8	237.5	252.8	190.1
2014	223.1	269.2	163.7	232.0	250.8	189.3
2013	211.7	251.9	160.2	226.7	245.1	183.1
2012	222.0	263.9	167.2	220.6	241.2	165.2
2011	240.2	288.8	175.9	221.0	239.7	175.3
2010	251.3	312.6	176.8	228.3	254.0	181.8
2009	229.7	261.0	176.7	228.0	241.1	185.8
2008	224.6	245.6	188.0	238.2	250.4	199.9
2007	213.1	223.6	196.3	233.2	244.1	201.0

Source: Tennessee Department of Health.

**High Blood Pressure****Deaths from Cerebrovascular Disease per 100,000**

RATE

	Madison			TN		
	Total	White	Black	Total	White	Black
2018	55.3	71.2	35.3	51.7	54.5	49.9
2017	65.5	71.1	62.3	52.4	55.2	50.1
2016	59.4	67.3	51.7	52.8	55.1	52.6
2015	46.6	57.5	32.6	52.2	53.9	49.8
2014	44.8	51.1	38.2	50.7	53.1	48.4
2013	46.6	57.5	32.6	48.1	50.5	45.8
2012	50.7	43.7	65.8	46.3	48.6	42.9
2011	51.9	58.4	44.7	50.1	52.8	46.2
2010	53.9	65.3	42.1	50.1	54.3	45.6
2009	60.0	63.7	54.8	50.6	51.9	48.2
2008	74.9	67.3	92.5	53.6	54.3	54.2
2007	60.0	59.8	62.3	56.3	57.9	52.5

Source: Tennessee Department of Health.

**Influenza in rural West Tennessee****Flue Vaccine Rate: Elderly**

	Madison	TN	US
2018	53.0%	47.37%	45.99%
2017	49.6%		
2016	55.8%		
2015	58.2%		
2014	62.7%		

Source: US Depart of alth & Human Services

## Obesity

### Youth Obesity

	Madison	TN
2017	41.0%	
2016	41.1%	39.2%
2015	41.8%	
2014	42.3%	

Source: Coordinated School Health.

### Physical Activity

	Madison	TN	US
2018			75.4%
2017		69.4%	
2016	73.2%		
2015	73.4%		
2014	72.0%		

Source: Behavioral Risk Survey. Percentage of adults reporting physcial activity-past 30 da

### Percent of Adults who have a body mass index greaster than 30-overweight or obese

	Madison	TN
2020	39	33
2019	36	33
2018	35	32
2017	34	32
2016	36	32
2015	37	32
2014	36	32
2013	34	32
2012	34	32
2011	32	31
2010	31	31

Source: Robert Wood Johnson Foundation and University of Wisconsin  
Population Health Institute.

## Teenage Pregnancy

### Pregnancies Age 10-17 per 1,000 Females

Madison

TN



	Total	White	Black	Total	White	Black
2018	3.5	3.5	3.8	4.6	3.7	8.8
2017	6.1	4.6	8.3	4.9	4.1	8.7
2016	5.0	3.7	6.8	5.4	4.5	9.7
2015	7.8	3.8	12.1	6.0	5.1	10.2
2014	6.2	4.6	8.5	6.3	5.5	10.7
2013	0.6	1.4	1.4	0.7	0.4	1.7
2012	1.3	0.0	2.9	0.7	0.5	1.5
2011	1.6	0.0	3.7	0.7	0.4	1.8
2010	2.2	0.0	5.0	0.8	0.4	1.8
2009	2.2	1.6	3.0	0.9	0.6	1.9
2008	2.5	0.0	5.9	1.2	0.6	3.1
2007	2.8	0.5	5.9	1.3	0.9	2.9

#### Pregnancies Age 15-17 Per 1,000 Females

	Madison			TN		
	Total	White	Black	Total	White	Black
2018	7.4	7.3	7.9	11.6	9.5	21.6
2017	13.9	10.2	18.9	12.4	10.5	21.4
2016	12.1	9.2	16.0	13.7	11.5	23.6
2015	17.6	9.4	25.6	15.2	13.2	24.7
2014	13.3	11.3	16.3	16.1	14.2	25.6
2013	8.8	6.2	12.5	7.2	6.0	12.9
2012	8.6	4.5	13.7	8.3	7.0	14.0
2011	10.4	7.8	14.0	8.9	7.3	15.5
2010	10.8	5.3	17.4	10.0	8.3	17.9
2009	15.1	6.5	25.8	12.0	9.1	21.9
2008	17.6	10.0	27.7	13.6	10.5	25.1
2007	16.9	9.1	27.8	13.9	10.9	24.5

Source: Tennessee Department of Health.

#### Tobacco Use

##### Adult Smoking-Percent of Adults that report smoking at least 100 cigarettes

	Madison	TN
2020	22	23
2019	19	22
2018	19	22
2017	21	22
2016	22	24
2015	20	23
2014	20	23
2013	21	23
2012	19	24
2011	19	24
2010	20	25

Source: Robert Wood Johnson Foundation and University of Wisconsin Population Health Institute.

#### Dementia/Alzheimer's Disease

##### Deaths from Alzheimers per 100,000

	Madison			TN		
	Total	White	Black	Total	White	Black
2017.0	61.4	91.9	19.0	52.4	60.4	27.2
2013.0	44.6	65.9	13.6	38.9	44.8	19.5

Source: Tennessee Department of Health.

Over 5 million Americans are living with Alzheimers Disease-110,000 in Tennessee  
Tennessee in 2014 16,000 adults ages 65-74 living with Alzheimers  
Tennessee in 2014 47,000 adults ages 75-84 living with Alzheimers  
Tennessee in 2014 41,000 adults ages 85+ living with Alzheimers  
Alzheimers is the 5th leading cause of death in the United States.  
138 percent increase in Alzheimers deaths since 2000

#### Injury Prevention

Drowning is leading case of injury death for children ages one to four  
Leading cause of death among children and young adults  
Injuries include unintentional and acts of violence  
Leads to many hospitalizations and emergency department visits  
For age groups 1-14 and 15-24 leading cause of death is motor vehicle accidents  
For age groups 25-34, 35-44, and 45-64 leading cause of death is poisoning  
For ages 65+ leading cause of death is falls  
Males at higher risk for dying and being hospitalized  
Caucasians more at risk of death from drug overdose and motor vehicle accidents  
African American more at risk of death from a firearm or homicide  
Injury Death rate per 100,000 for Madison County 2012 is 57.6 compared to 77.0 for TN  
Non-fatal hospitalization rate per 100,000 for Madison County is 573.9 compared to 558.2 for TN  
Traumatic Brain Injuries mainly caused by firearms and unintentional falls

Source : Tennessee Department of Health. Injury Annual Report October \_\_\_\_  
Tennessee Department of Health. Traumatic Brain Injury \_\_\_\_

#### Mental Illness

Mental illness affects 1 in 5 families in the United States.  
18.1 percent or 43.6 million of Americans age 18 and older suffer from a diagnosed mental illness.  
98 million age 18+ or 4.2 percent of the population live with a serious, persistent mental illness  
Mental illness is the leading disability for individuals ages 15-44 in the United States.  
13 percent of adults received treatment for a mental illness  
(includes inpatient, outpatient, medication management).  
Major depression disorder-6.7 percent of adults had an episode in 2015.  
Bi-polar disorder-2.6 percent of adults-median age is 25.

Schizophrenia-1.1 percent of adults  
 Panic disorder -2.7 percent of adults-median age 24  
 Post traumatic stress disorder-3.5 percent of adults-on set at age 23.

Source: National Institute of Mental Health.

**Average Number of Mentally Unhealthy Days Reported in Last 30 Days**

	<b>Madison</b>	<b>TN</b>
2020	4.7	4.5
2019	4.5	4.5
2018	4.5	4.5
2017	4.4	4.4
2016	4.5	4.9
2015	3.1	3.4
2014	3.1	3.4
2013	3.0	3.3
2012	2.8	3.4
2011	2.9	3.4
2010	2.8	3.3

Source: Robert Wood Johnson Foundation and University of Wisconsin Population Health Institute.

**Sexually Transmitted Diseases in Madison County**

<b>Year</b>	<b>Madison</b>	<b>TN</b>
2020	27.9	19.0
2019	23.0	17.3
2016	28.3	15.2
2012	30.9	20.3
2010	24.3	18.9
2009	33.9	21.2
2008	46.4	21.2
2007	43.2	22.5
2006	42.7	21.2
2005	42.0	20.0

Source: Tennessee Commission on Children and Youth: KIDS COUNT: The State of the Child in Tennessee.

**Traumatic Brain Injury**

During 2019 , 8,435 patients were reported to the TBI Registry, 7,605 discharged from Hospital alive, and 830 were deceased. Over 60 percent of patients were over age 54.  
 51 percent discharged to home; 8 percent home under home care; 37 percent to long term facility  
 77 percent of patients were non-Hispanic White; 14 percent non-Hispanic African American  
 Most patients were male  
 Most resulted from intracranial injury followed by fracture of skull  
 Skull fractures caused by falls (33 percent ) and motor vehicle crashes (26 percent)  
 Intracranial injuries caused by falls (44 percent) and motor vehicle crashes (21 percent)

**Deaths from TBI-Tennessee Per 100,000 people**

2019	21.8
2018	21.6
2017	22.1
2016	21.7
2015	20.4

**TBI ED Visits Tennessee Per 100,000 people**

2018	257.2
2017	268.4
2016	268.0

Most sports related ED visits due to football, followed by basketball, pedal cycling, soccer, and baseball

ED TBI visits due to unintentional falls (22,026), motor vehicle crashes (9,008), and assaults (4,793)

Source: Tennessee Department of Health

Summary of Health Issues-2021 Community Health Needs Assessment Secondary Data

X= indicator Higher for the County than the State of Tennessee

County	Cancer Deaths	Heart Disease	Children in Poverty	Uninsured Population	Persons in Poverty	Obesity	Teen Pregnancy	Tobacco Use	Cerebrovascular Deaths	Diabetes Deaths	Excessive Drinking	Teen Pregnancy	Drug-Related Issues	Diabetes Diagnosed	Motor Vehicle Accidents
Benton	X	X	X	X		X		X	X	X		X			
Chester		X			X	X				X	X		X	X	
Crockett	X	X		X	X	X		X		X		X	X		X
Gibson	X	X				X				X					
Hardeman	X	X	X	X		X		X	X	X			X	X	
Haywood	X	X	X			X			X	X				X	
Madison		X	X			X			X	X			X		
Dyer	X	X				X				X		X	X	X	
Weakley	X					X				X			X		

# Community Health Assessment Survey

## West Tennessee Healthcare

We would like you to help us identify current health and well being issues facing rural West Tennessee counties. Your responses will be confidential. This survey will take between 3-5 minutes.

Please answer the following questions by selecting the response that best describes you. Darken or fill in the circle for each response.

### 1. Age

- ☐ 18-24      ☐ 25-35      ☐ 36-50      ☐ 51-64      ☐ 65+

### 2. Education

- ☐ Less than high school      ☐ High school graduate/GED      ☐ Some college  
☐ Associate degree      ☐ Bachelor degree      ☐ Advanced degree

### 3. Employment Status

- ☐ Employed full time      ☐ Employed part time  
☐ Homemaker full time      ☐ Not working because of acute illness or injury  
☐ Permanently disabled      ☐ Retired  
☐ Student full time      ☐ Student part time

### 4. Gender

- ☐ Female  
☐ Male  
☐ Trans Female (Male to Female)  
☐ Trans Male (Female to Male)  
☐ Gender Non-conforming (i.e. not exclusively male or female)

### 5. Insurance

- ☐ Medicare      ☐ No insurance  
☐ Obamacare (Affordable Healthcare)      ☐ Private insurance  
☐ TennCare      ☐ Other

### 6. County of Residence

- |                                  |                                |                                 |                               |                              |
|----------------------------------|--------------------------------|---------------------------------|-------------------------------|------------------------------|
| <input type="radio"/> Benton     | <input type="radio"/> Chester  | <input type="radio"/> Crockett  | <input type="radio"/> Dyer    | <input type="radio"/> Gibson |
| <input type="radio"/> Hardeman   | <input type="radio"/> Haywood  | <input type="radio"/> Madison   | <input type="radio"/> Weakley | <input type="radio"/> Benton |
| <input type="radio"/> Carroll    | <input type="radio"/> Chester  | <input type="radio"/> Crockett  | <input type="radio"/> Decatur | <input type="radio"/> Dyer   |
| <input type="radio"/> Gibson     | <input type="radio"/> Hardeman | <input type="radio"/> Hardin    | <input type="radio"/> Haywood | <input type="radio"/> Henry  |
| <input type="radio"/> Lauderdale | <input type="radio"/> Madison  | <input type="radio"/> McNairy   | <input type="radio"/> Obion   | <input type="radio"/> Shelby |
| <input type="radio"/> Weakley    | <input type="radio"/> Lake     | <input type="radio"/> Henderson |                               |                              |



# Community Health Assessment Survey

## West Tennessee Healthcare



### 7. Race

- |  |   |
|--|---|
| <input type="radio"/> African/American | <input type="radio"/> American Indian/Alaskan Native            |
| <input type="radio"/> Asian            | <input type="radio"/> Caucasian                                 |
| <input type="radio"/> Hispanic/Latino  | <input type="radio"/> Indian (from India or parents from India) |
| <input type="radio"/> Middle Eastern   | <input type="radio"/> Pacific Islander/Polynesian               |
| <input type="radio"/> Other            | <input type="radio"/> Not sure                                  |

### 8. Weight

- ☐ Just right
 ☐ Obese
 ☐ Overweight
 ☐ Underweight

**For the following questions, indicate if you have experienced the health issue by selecting Yes or No.**

Response Definition: Y=Yes N=No

	Y	N
9. Have you had (or do you currently have) <b>Allergies</b> ?	<input type="radio"/>	<input type="radio"/>
10. Have you had (or do you currently have) <b>Arthritis</b> ?	<input type="radio"/>	<input type="radio"/>
11. Have you had (or do you currently have) <b>Asthma</b> ?	<input type="radio"/>	<input type="radio"/>
12. Have you had (or do you currently have) an <b>Autoimmune disease</b> ?	<input type="radio"/>	<input type="radio"/>
13. Have you had (or do you currently experiencing) <b>Bullying</b> ?	<input type="radio"/>	<input type="radio"/>
14. Have you had (or do you currently have) <b>Chronic Pain</b> ?	<input type="radio"/>	<input type="radio"/>
15. Have you had (or do you currently have) <b>Dementia/Alzheimer's</b> ?	<input type="radio"/>	<input type="radio"/>
16. Have you had (or do you currently have) <b>Diabetes</b> ?	<input type="radio"/>	<input type="radio"/>
17. Have you had (or do you currently have) <b>Emphysema/COPD</b> ?	<input type="radio"/>	<input type="radio"/>
18. Have you had (or do you currently have) an <b>Eye Condition (cataracts, glaucoma, masclar degeneration)</b> ?	<input type="radio"/>	<input type="radio"/>
19. Have you had (or do you currently have) a <b>Fall or Fall related injury</b> ?	<input type="radio"/>	<input type="radio"/>
20. Have you had (or do you currently have) <b>Hearing Loss/Deafness</b> ?	<input type="radio"/>	<input type="radio"/>
21. Have you had (or do you currently have) <b>High Blood Pressure</b> ?	<input type="radio"/>	<input type="radio"/>
22. Have you had (or do you currently have) <b>Osteoporosis</b> ?	<input type="radio"/>	<input type="radio"/>
23. Have you had (or do you currently have) a <b>Heart Condition</b> ?	<input type="radio"/>	<input type="radio"/>
24. Have you had (or do you currently have) high levels of <b>Stress</b> ?	<input type="radio"/>	<input type="radio"/>
25. Have you had a <b>Stroke</b> ?	<input type="radio"/>	<input type="radio"/>

**Have you experienced a lack of financial resources that led to problems accessing any of the following:**

	Y	N
26. Dental care	<input type="radio"/>	<input type="radio"/>
27. Medical care	<input type="radio"/>	<input type="radio"/>
28. Medications	<input type="radio"/>	<input type="radio"/>



# Community Health Assessment Survey

## West Tennessee Healthcare

Have you experienced a **lack of transportation** that led to problems accessing any of the following

- |   | Y                     | N                     |
|---|-----------------------|-----------------------|
| 29. Dental care   | <input type="radio"/> | <input type="radio"/> |
| 30. Medical care  | <input type="radio"/> | <input type="radio"/> |
| 31. Medications   | <input type="radio"/> | <input type="radio"/> |
| 32. Do you have access to <b>Healthy Foods</b> (fresh fruits & vegetables, lean meats, whole grain products, low fat milk products) | <input type="radio"/> | <input type="radio"/> |
| 33. How far must you travel to access <b>Healthy Foods</b> listed above?  |                       |                       |
| <input type="radio"/> less than one mile  | <input type="radio"/> | <input type="radio"/> |
| <input type="radio"/> over three miles to five miles  | <input type="radio"/> | <input type="radio"/> |
| <input type="radio"/> over ten miles  |                       |                       |
| <input type="radio"/> over one mile to three miles  |                       |                       |
| <input type="radio"/> over five miles to ten miles  |                       |                       |
| 34. Do you have access to <b>Information/Education</b> about your health issues, if any?  | <input type="radio"/> | <input type="radio"/> |
| 35. Do you have access to <b>Child or Adult Care</b> ?  | <input type="radio"/> | <input type="radio"/> |
| 36. Do you have access to facilities or places for <b>Physical Activity</b> ?   | <input type="radio"/> | <input type="radio"/> |
| 37. Do you have a family history of:  |                       |                       |
| <input type="radio"/> suicide   | <input type="radio"/> | <input type="radio"/> |
| <input type="radio"/> heart failure   | <input type="radio"/> | <input type="radio"/> |
| <input type="radio"/> opioid use  | <input type="radio"/> | <input type="radio"/> |
| 38. Have you or family member had the COVID-19 vaccine?   | <input type="radio"/> | <input type="radio"/> |
| 39. Have you or family member had COVID-19?   | <input type="radio"/> | <input type="radio"/> |

The following questions ask about difficult situations that may cause you to feel upset..if so please talk with someone you consider safe or contact a health professional or counselor.

**Prior to your 18th birthday, did you experience and of the following?**

- |   | Y                     | N                     |
|---|-----------------------|-----------------------|
| 40. Did a parent or other adult in the household often swear at you, insult you, put you down or humiliate you? OR act in a way that made you afraid that you might be physically harmed?             | <input type="radio"/> | <input type="radio"/> |
| 41. Did an adult or person at least 5 years older than you ever touch or fondle you or have you touch their body in a sexual way? OR try to have oral, anal, or vaginal sex with you?                 | <input type="radio"/> | <input type="radio"/> |
| 42. Did you often feel that no one in your family loved you or thought you were important or special? OR Your family didn't look out for each other, feel close to each other, or support each other? | <input type="radio"/> | <input type="radio"/> |
| 43. Did a parent or other adult in the household often push, grab, slap, or throw something at you? OR ever hit you so hard that you had marks or were injured?                                       | <input type="radio"/> | <input type="radio"/> |
| 44. Were your parents ever separated or divorced?   | <input type="radio"/> | <input type="radio"/> |







# Community Health Assessment Survey

## West Tennessee Healthcare



- |   | Y                     | N                     |
|---|-----------------------|-----------------------|
| 45. Was your mother or stepmother often pushed, grabbed, slapped or had something thrown at her? OR sometimes or often kicked, bitten, hit with a fist, or hit with something hard? OR ever repeatedly hit or at least a few minutes or threatened with a gun or knife? | <input type="radio"/> | <input type="radio"/> |
| 46. Did you live with anyone who was a problem drinker or alcoholic or used street drugs?   | <input type="radio"/> | <input type="radio"/> |
| 47. Was a household member depressed or mentally ill or did a household member ever attempt suicide?  | <input type="radio"/> | <input type="radio"/> |
| 48. Did a household member ever go to prison?   | <input type="radio"/> | <input type="radio"/> |
| 49. Did you often feel that you didn't have enough to eat, had to wear dirty clothes, or had no one to protect you? OR your parents were too drunk or high to take care of you or take you to the doctor if you needed it?  | <input type="radio"/> | <input type="radio"/> |



# Community Needs Assessment Results

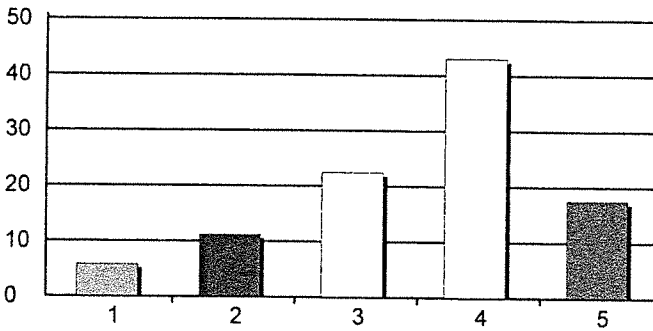
## May 2, 2021

Creation Date: 5/2/2021

Time Interval: 3/28/2021 to 5/2/2021

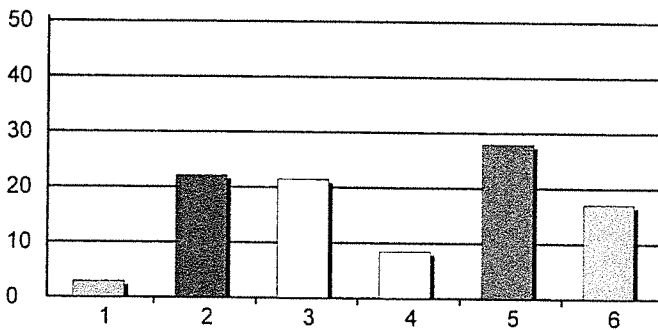
Total Respondents: 1895

### 1. Age



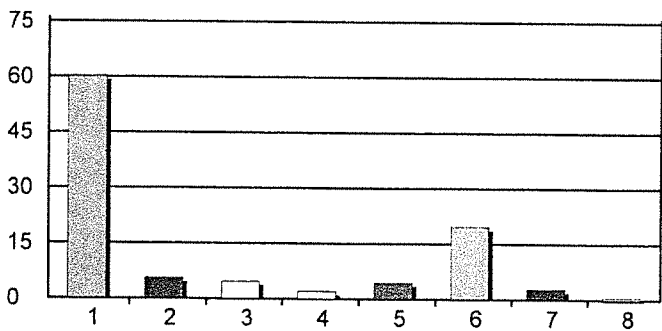
1. 18-24	109	6%
2. 25-35	211	11%
3. 36-50	423	22%
4. 51-64	811	43%
5. 65+	331	18%
Total Responses:	1885	
Mean: 3.55	Standard Deviation: 1.08	

### 2. Education



1. Less than high school	53	3%
2. High school graduate/GED	409	22%
3. Some college	396	21%
4. Associate degree	156	8%
5. Bachelor degree	516	28%
6. Advanced degree	316	17%
Total Responses:	1846	

### 3. Employment Status

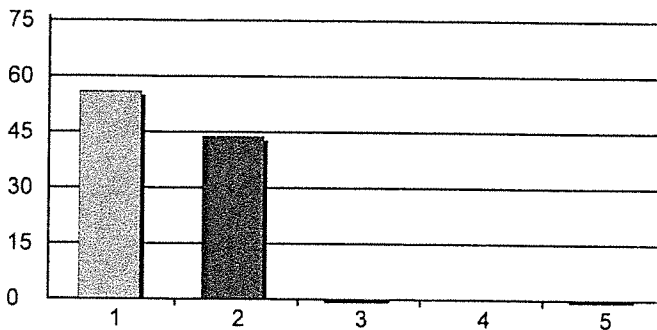


1. Employed full time	1090	60%
2. Employed part time	101	6%
3. Homemaker full time	84	5%
4. Not working because of acute illness or injury	38	2%
5. Permanently disabled	80	4%
6. Retired	357	20%
7. Student full time	51	3%
8. Student part time	10	1%
Total Responses:	1811	

# Community Needs Assessment Results

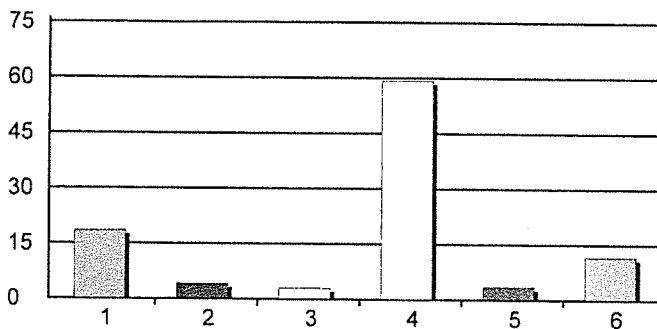
## May 2, 2021

### 4. Gender



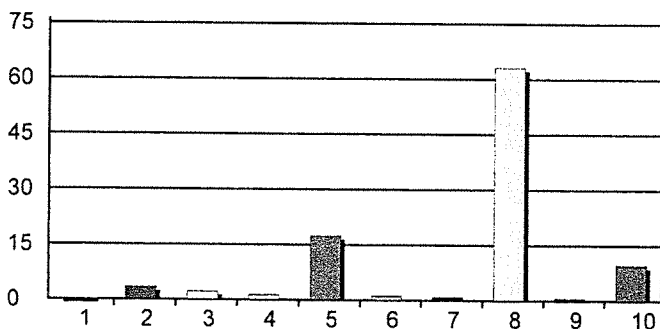
1. Female	1048	56%
2. Male	821	44%
3. Trans Female (Male to Female)	2	0%
4. Trans Male (Female to Male)	0	0%
5. Gender Non-conforming (i.e. not exclusively m...	4	0%
<b>Total Responses:</b>	<b>1875</b>	
Mean: 1.45 Standard Deviation: 0.52		

### 5. Insurance



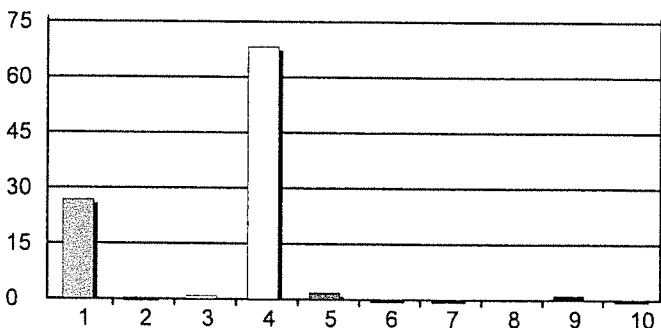
1. Medicare	338	19%
2. No insurance	75	4%
3. Obamacare (Affordable Healthcare)	54	3%
4. Private insurance	1081	59%
5. TennCare	65	4%
6. Other	213	12%
<b>Total Responses:</b>	<b>1826</b>	

### 6. County of Residence



1. Benton	2	0%
2. Chester	64	3%
3. Crockett	42	2%
4. Dyer	25	1%
5. Gibson	328	17%
6. Hardeman	22	1%
7. Haywood	17	1%
8. Madison	1192	63%
9. Weakley	13	1%
10. Other	183	10%
<b>Total Responses:</b>	<b>1888</b>	
Mean: 7.27 Standard Deviation: 1.88		

### 7. Race

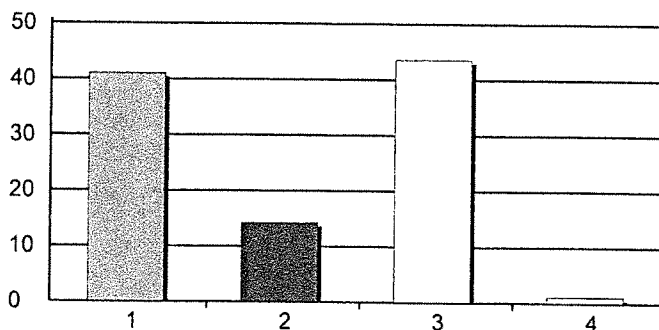


1. African/American	490	27%
2. American Indian/Alaskan Native	7	0%
3. Asian	16	1%
4. Caucasian	1248	68%
5. Hispanic/Latino	33	2%
6. Indian (from India or parents from India)	4	0%
7. Middle Eastern	4	0%
8. Pacific Islander/Polynesian	0	0%
9. Other	23	1%
10. Not sure	5	0%
<b>Total Responses:</b>	<b>1830</b>	

# Community Needs Assessment Results

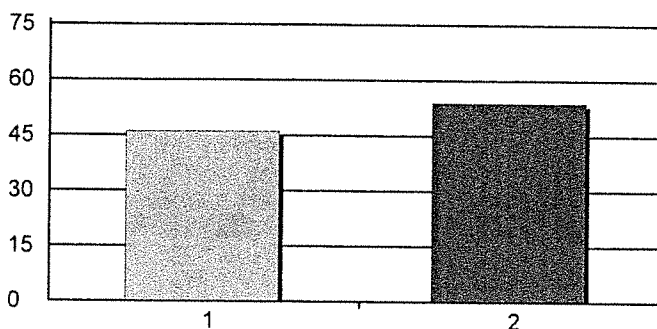
## May 2, 2021

### 8. Weight



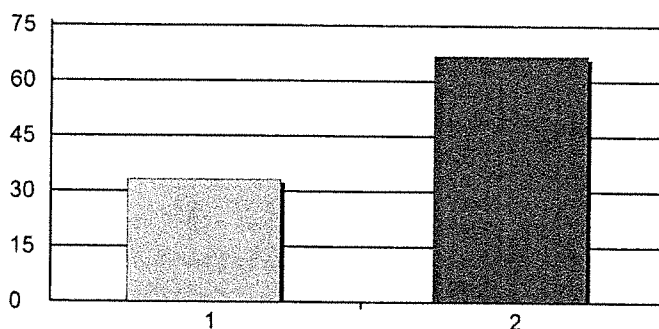
1. Just right	659	41%
2. Obese	229	14%
3. Overweight	699	44%
4. Underweight	18	1%
Total Responses:	1605	

### 9. Have you had (or do you currently have) Allergies?



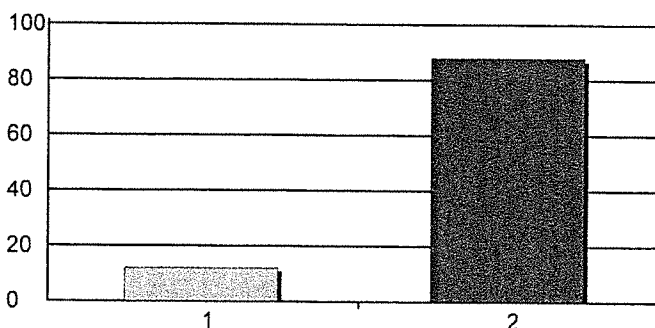
1. Yes	865	46%
2. No	1011	54%
Total Responses:	1876	
Mean: 1.54	Standard Deviation: 0.50	

### 10. Have you had (or do you currently have) Arthritis?



1. Yes	621	33%
2. No	1250	67%
Total Responses:	1871	
Mean: 1.67	Standard Deviation: 0.47	

### 11. Have you had (or do you currently have) Asthma?

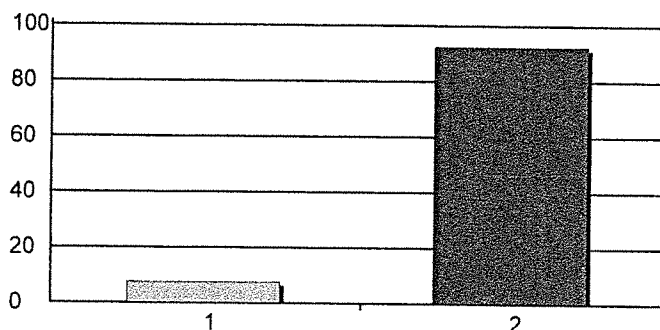


1. Yes	226	12%
2. No	1654	88%
Total Responses:	1880	
Mean: 1.88	Standard Deviation: 0.33	

# Community Needs Assessment Results

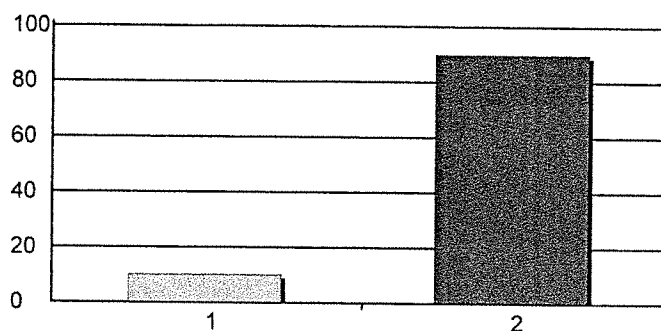
## May 2, 2021

12. Have you had (or do you currently have) an **Autoimmune disease**?



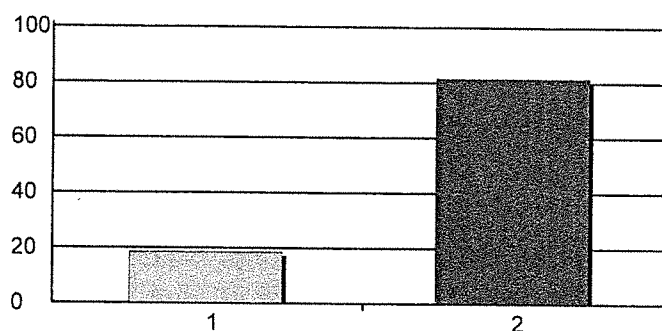
1. Yes 141 8%  
 2. No 1729 92%  
 Total Responses: 1870  
 Mean: 1.92 Standard Deviation: 0.26

13. Have you had (or do you currently experiencing) **Bullying**?



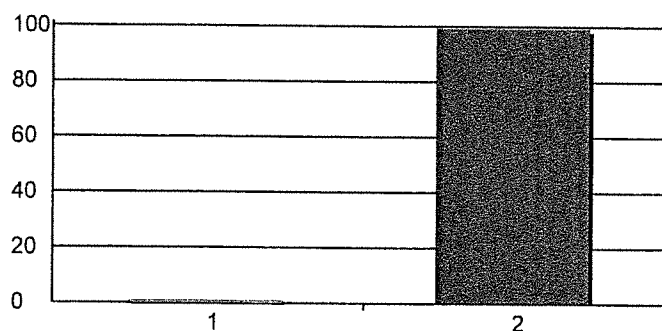
1. Yes 188 10%  
 2. No 1679 90%  
 Total Responses: 1867  
 Mean: 1.90 Standard Deviation: 0.30

14. Have you had (or do you currently have) **Chronic Pain**?



1. Yes 347 18%  
 2. No 1532 82%  
 Total Responses: 1879  
 Mean: 1.82 Standard Deviation: 0.39

15. Have you had (or do you currently have) **Dementia/Alzheimer's**?

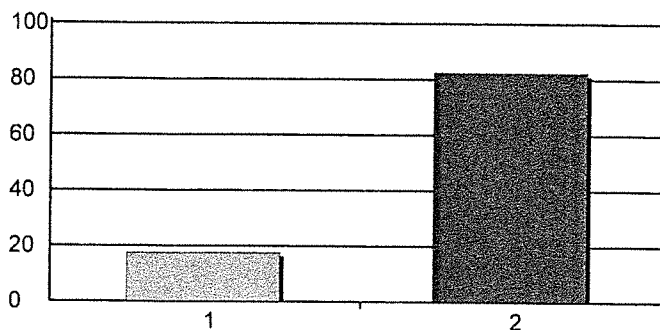


1. Yes 15 1%  
 2. No 1859 99%  
 Total Responses: 1874  
 Mean: 1.99 Standard Deviation: 0.09

# Community Needs Assessment Results

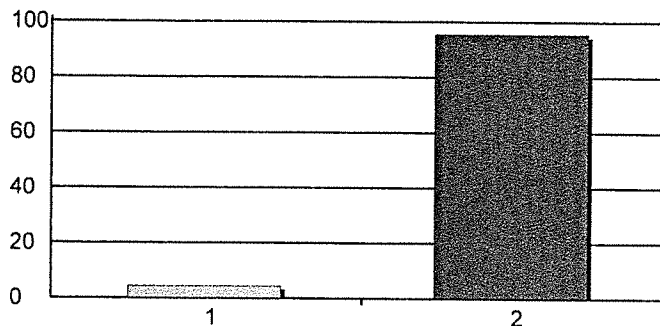
## May 2, 2021

16. Have you had (or do you currently have) **Diabetes**?



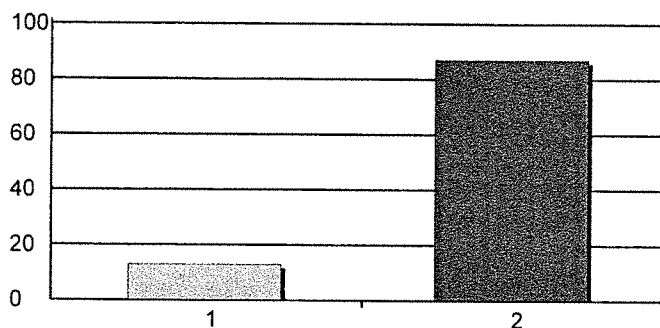
1. Yes 329 18%  
 2. No 1544 82%  
 Total Responses: 1873  
 Mean: 1.82 Standard Deviation: 0.38

17. Have you had (or do you currently have) **Emphysema/COPD**?



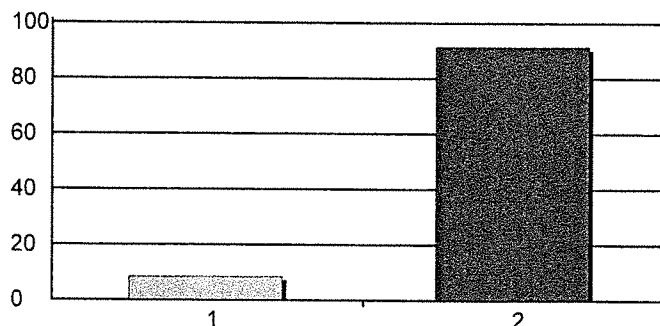
1. Yes 83 4%  
 2. No 1787 96%  
 Total Responses: 1870  
 Mean: 1.96 Standard Deviation: 0.21

18. Have you had (or do you currently have) an **Eye Condition (cataracts, glaucoma, macular degeneration)**?



1. Yes 243 13%  
 2. No 1631 87%  
 Total Responses: 1874  
 Mean: 1.87 Standard Deviation: 0.34

19. Have you had (or do you currently have) a **Fall or Fall related injury**?

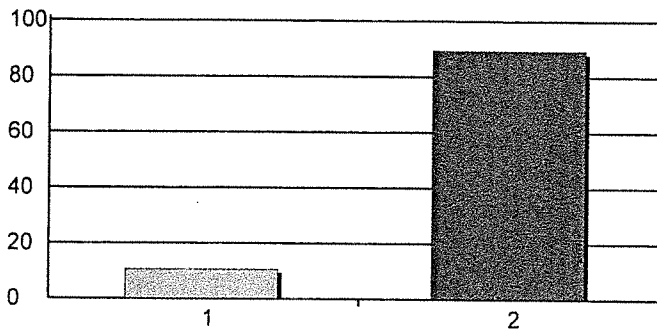


1. Yes 159 8%  
 2. No 1720 92%  
 Total Responses: 1879  
 Mean: 1.92 Standard Deviation: 0.28

# Community Needs Assessment Results

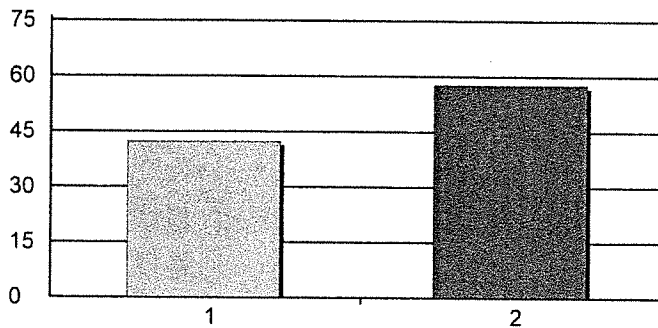
## May 2, 2021

20. Have you had (or do you currently have) **Hearing Loss/Deafness**?



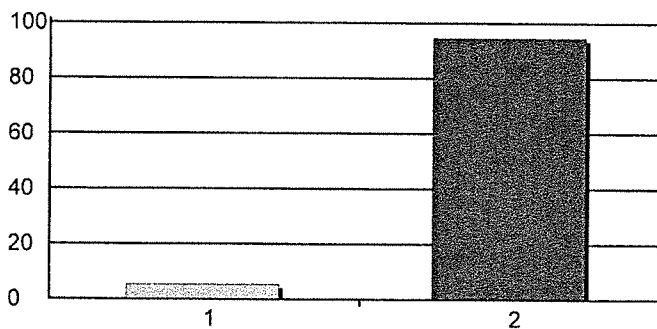
1. Yes 199 11%  
 2. No 1676 89%  
 Total Responses: 1875  
 Mean: 1.89 Standard Deviation: 0.31

21. Have you had (or do you currently have) **High Blood Pressure**?



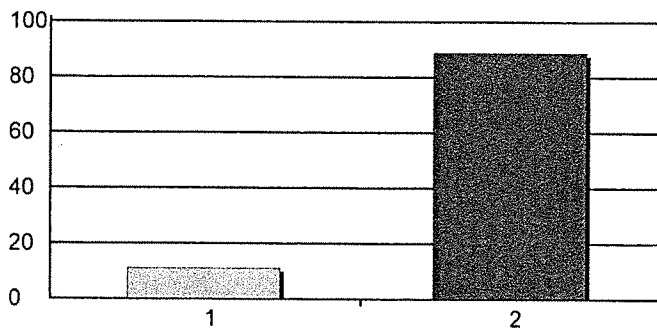
1. Yes 790 42%  
 2. No 1078 58%  
 Total Responses: 1868  
 Mean: 1.58 Standard Deviation: 0.49

22. Have you had (or do you currently have) **Osteoporosis**?



1. Yes 101 5%  
 2. No 1770 95%  
 Total Responses: 1871  
 Mean: 1.95 Standard Deviation: 0.23

23. Have you had (or do you currently have) **a Heart Condition**?

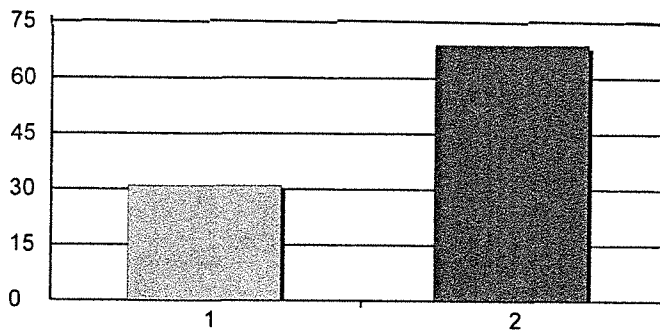


1. Yes 208 11%  
 2. No 1665 89%  
 Total Responses: 1873  
 Mean: 1.89 Standard Deviation: 0.31

# Community Needs Assessment Results

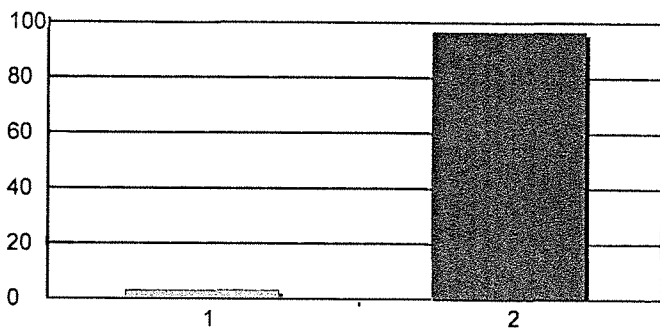
## May 2, 2021

24. Have you had (or do you currently have) high levels of Stress?



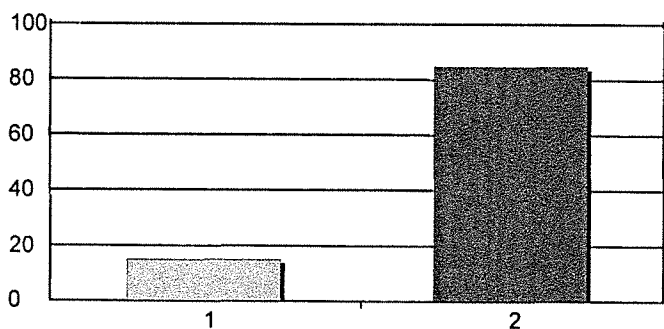
1. Yes 581 31%  
 2. No 1293 69%  
 Total Responses: 1874  
 Mean: 1.69 Standard Deviation: 0.46

25. Have you had a Stroke?



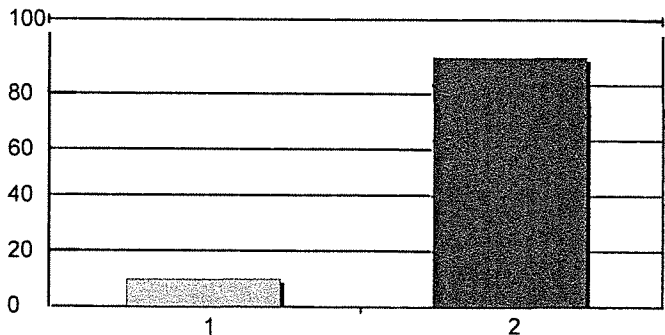
1. Yes 62 3%  
 2. No 1806 97%  
 Total Responses: 1868  
 Mean: 1.97 Standard Deviation: 0.18

26. Lack of financial resources for: Dental care



1. Yes 279 15%  
 2. No 1585 85%  
 Total Responses: 1864  
 Mean: 1.85 Standard Deviation: 0.36

27. Lack of financial resources for: Medical care



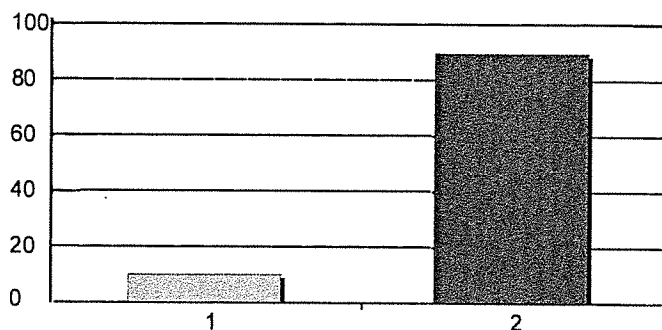
1. Yes 185 10%  
 2. No 1673 90%  
 Total Responses: 1858  
 Mean: 1.90 Standard Deviation: 0.30



# Community Needs Assessment Results

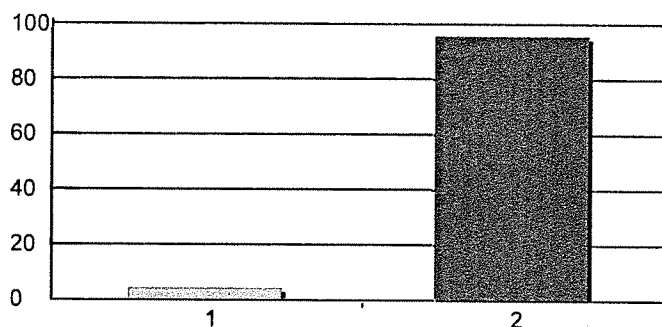
## May 2, 2021

### 28. Lack of financial resources for: Medications



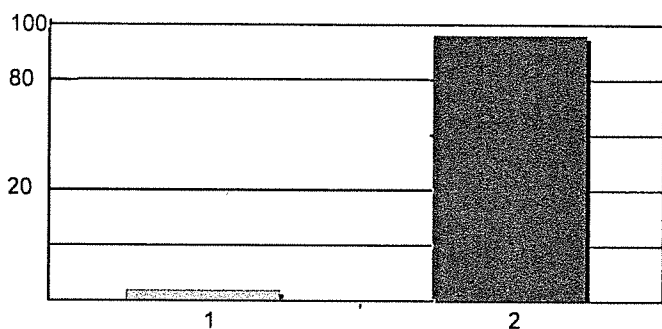
1. Yes 189 10%  
 2. No 1664 90%  
 Total Responses: 1853  
 Mean: 1.90 Standard Deviation: 0.30

### 29. Lack transportationDental care



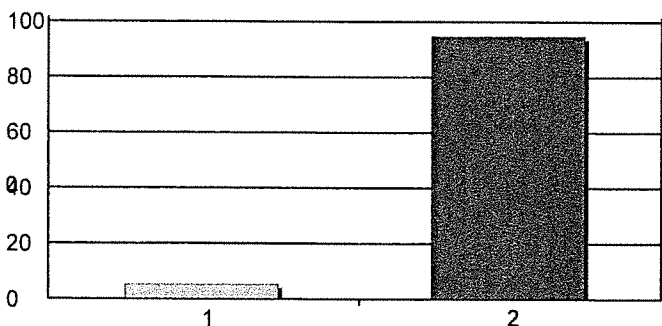
1. Yes 82 4%  
 2. No 1774 96%  
 Total Responses: 1856  
 Mean: 1.96 Standard Deviation: 0.21

### 30. Lack transportation: Medical care



1. Yes 72 4%  
 2. No 1781 96%  
 Total Responses: 1853  
 Mean: 1.96 Standard Deviation: 0.19

### 31. Lack transportation: Medications

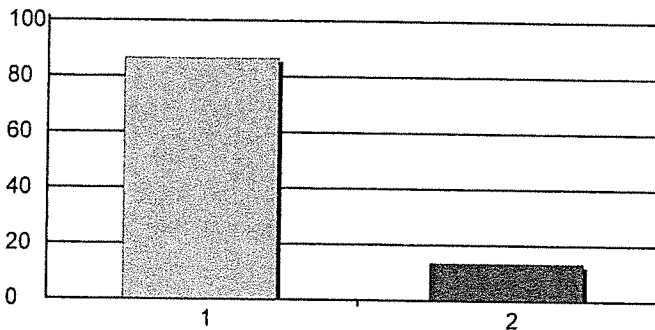


1. Yes 96 5%  
 2. No 1734 95%  
 Total Responses: 1830  
 Mean: 1.95 Standard Deviation: 0.22

# Community Needs Assessment Results

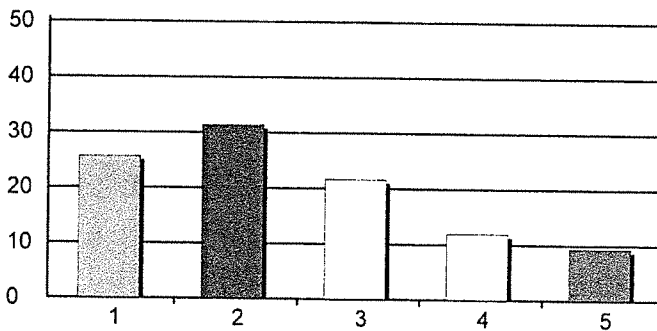
## May 2, 2021

32. Do you have access to **Healthy Foods** (fresh fruits & vegetables, lean meats, whole grain products, low fat milk products)



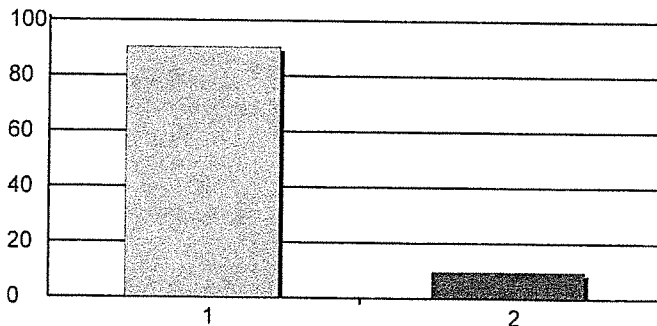
1. Yes 1510 86%  
 2. No 236 14%  
 Total Responses: 1746  
 Mean: 1.14 Standard Deviation: 0.34

33. Mileage How far must you travel to access Healthy Foods?



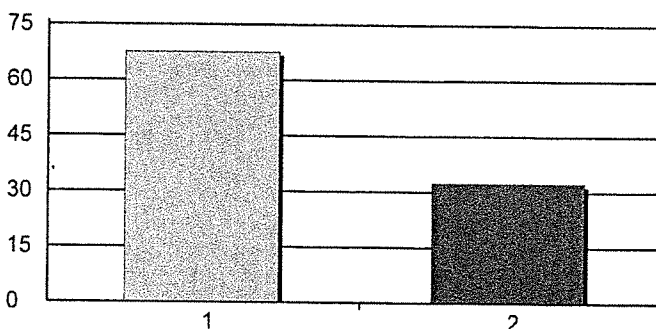
1. less than one mile 450 26%  
 2. over one mile to three miles 550 31%  
 3. over three miles to five miles 379 22%  
 4. over five miles to ten miles 210 12%  
 5. over ten miles 164 9%  
 Total Responses: 1753  
 Mean: 2.48 Standard Deviation: 1.25

34. Mileage Do you have access to information about your health issues?



1. Yes 1665 90%  
 2. No 177 10%  
 Total Responses: 1842  
 Mean: 1.10 Standard Deviation: 0.29

35. Mileage Do you have access to Adult or Child Care?

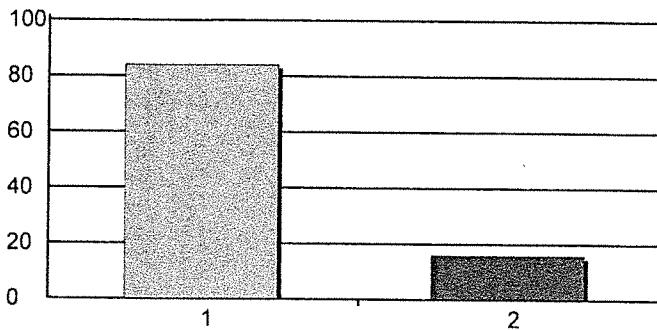


1. Yes 1181 68%  
 2. No 566 32%  
 Total Responses: 1747  
 Mean: 1.32 Standard Deviation: 0.47

# Community Needs Assessment Results

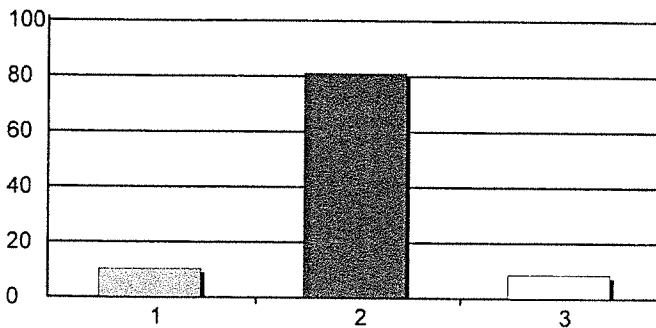
## May 2, 2021

36. Mileage Do you have access to facilities for physical activity?



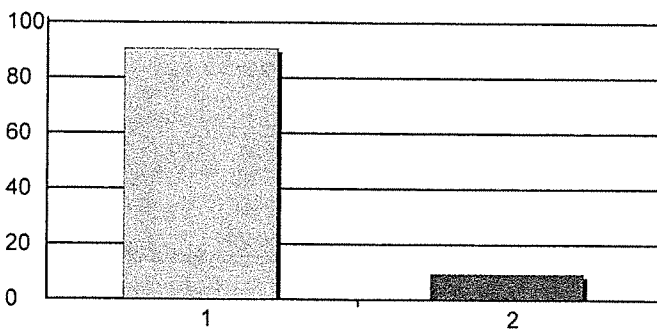
1. Yes 1520 84%  
 2. No 288 16%  
 Total Responses: 1808  
 Mean: 1.16 Standard Deviation: 0.37

37. Mileage Do you have a family history of:



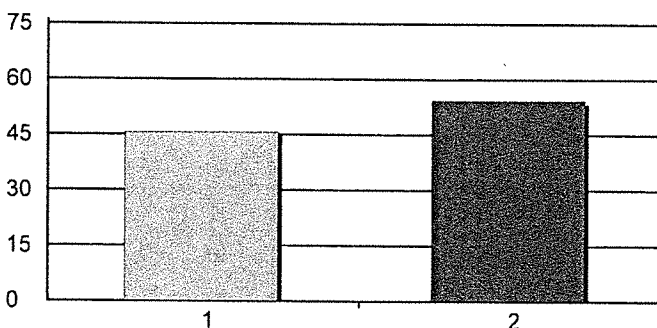
1. suicide 59 10%  
 2. heart failure 463 81%  
 3. opioid use 49 9%  
 Total Responses: 571  
 Mean: 1.98 Standard Deviation: 0.43

38. Mileage Have you or family member had COVID-19 vaccine?



1. Yes 1671 91%  
 2. No 173 9%  
 Total Responses: 1844  
 Mean: 1.09 Standard Deviation: 0.29

39. Mileage Have you or family member had COVID-19?

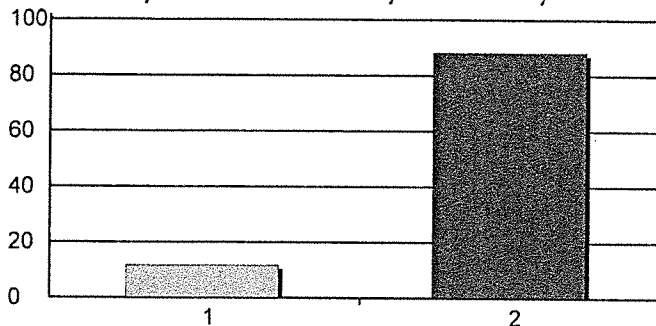


1. Yes 844 46%  
 2. No 1004 54%  
 Total Responses: 1848  
 Mean: 1.54 Standard Deviation: 0.50

# Community Needs Assessment Results

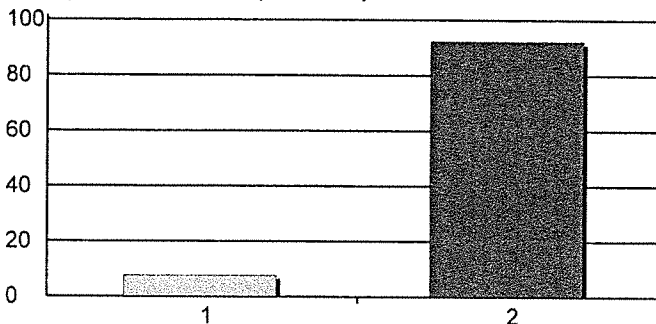
## May 2, 2021

40. Mileage Did a parent or other adult in the household often swear at you, insult you, put you down, or humiliate you? OR act in a way that made you afraid that you might be physically harmed?



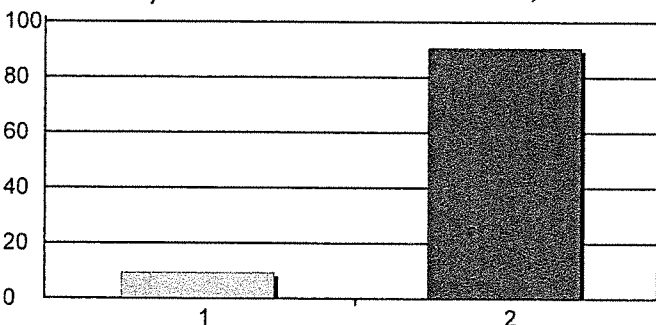
1. Yes you might be physically harmed? 214 12%  
 2. No 1608 88%  
 Total Responses: 1822  
 Mean: 1.88 Standard Deviation: 0.32

41. Mileage Did an adult or person at least 5 years older than you ever touch or fondle you or have you touch their body in a sexual way? OR try to have oral, anal, or vaginal sex with you?



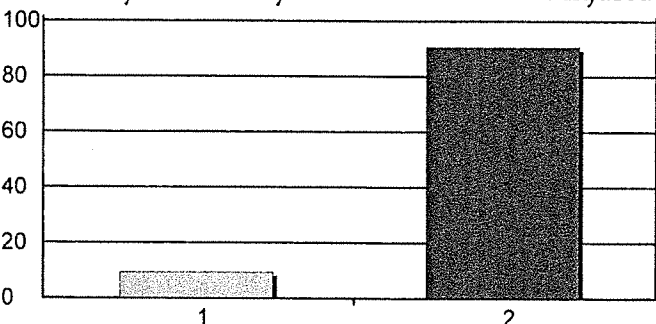
1. Yes 138 8%  
 2. No 1670 92%  
 Total Responses: 1808  
 Mean: 1.92 Standard Deviation: 0.27

42. Mileage Did you often feel that no one in your family loved you or thought you were important or special? OR Your family didn't look out for each other, feel close to each other, or support each other?



1. Yes each other, or support each other? 169 9%  
 2. No 1643 91%  
 Total Responses: 1812  
 Mean: 1.91 Standard Deviation: 0.29

43. Mileage Did a parent or other adult in the household often push, grab, slap, or throw something at you? OR ever hit you so hard you had marks or were injured?

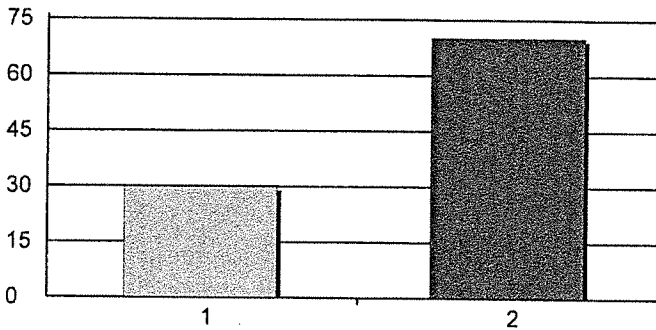


1. Yes 170 9%  
 2. No 1641 91%  
 Total Responses: 1811  
 Mean: 1.91 Standard Deviation: 0.29

# Community Needs Assessment Results

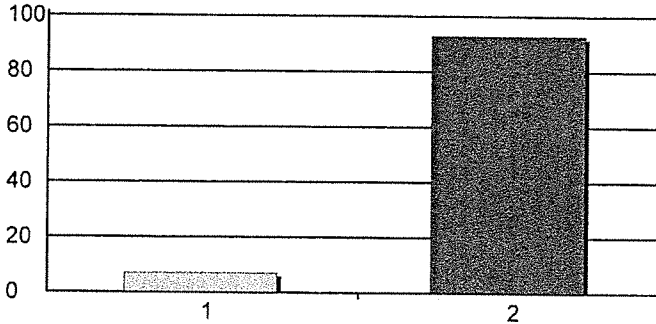
## May 2, 2021

44. Mileage Were your parents ever separated or divorced?



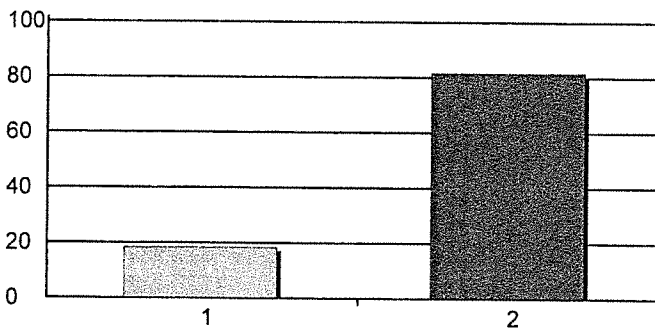
1. Yes 543 30%  
 2. No 1276 70%  
 Total Responses: 1819  
 Mean: 1.70 Standard Deviation: 0.46

45. Mileage Was your mother or stepmother often pushed, grabbed, slapped, or had something thrown at her? Or kicked, bitten, hit with s fist or hit, threatened with a gun or knife?



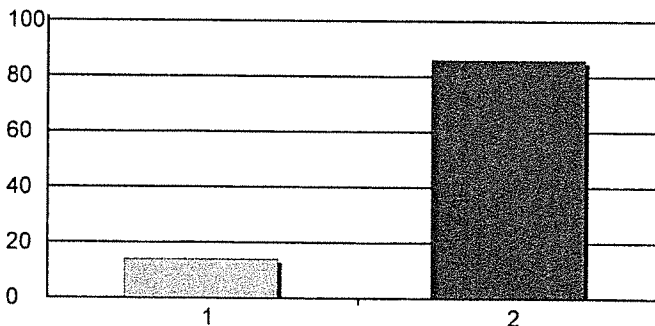
1. Yes 126 7%  
 2. No 1660 93%  
 Total Responses: 1786  
 Mean: 1.93 Standard Deviation: 0.26

46. Mileage Did you live with anyone who was a problem drinker or alcoholic, or used street drugs?



1. Yes 328 18%  
 2. No 1461 82%  
 Total Responses: 1789  
 Mean: 1.82 Standard Deviation: 0.39

47. Mileage Was a household member depressed or mentally ill or did a household member ever attempt suicide?

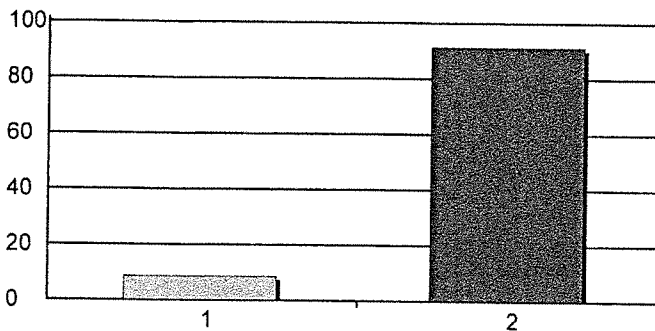


1. Yes 251 14%  
 2. No 1547 86%  
 Total Responses: 1798  
 Mean: 1.86 Standard Deviation: 0.35

# Community Needs Assessment Results

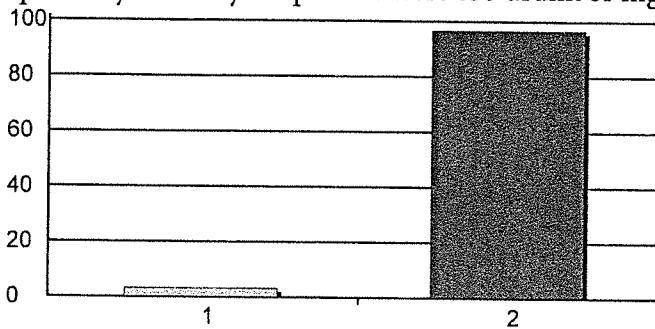
## May 2, 2021

48. Mileage Did a household member ever go to prison?



1. Yes 156 9%  
 2. No 1643 91%  
 Total Responses: 1799  
 Mean: 1.91 Standard Deviation: 0.28

49. Mileage Did you often feel that you did not have enough to eat, had to wear dirty clothes, or had no one to protect you? OR your parents were too drunk or high to take care of you or take you to the



1. Yes 58 3%  
 2. No 1743 97%  
 Total Responses: 1801  
 Mean: 1.97 Standard Deviation: 0.18

doctor?