



720 West Forest, Jackson, TN 38301 • 731-541-9561 • kirklandcancercenter.org



2020 Annual Report



West Tennessee
HEALTHCARE™

ALICE AND CARL
KIRKLAND
CANCER CENTER

a service of Jackson-Madison County General Hospital



Dr. Joseph Fouché
Kirkland Cancer Center
Medical Director

During the past seven years, the team of providers, administrators and support staff at the Alice & Carl Kirkland Cancer Center have set a high bar of delivering exceptional cancer care to the West Tennessee community. I believe that the vast majority of our patients appreciate that we consistently surpass this bar. Nevertheless, this past year the COVID-19 pandemic presented unparalleled challenges to provide adequate patient care and access to health care centers throughout the world. The Kirkland Cancer Center was not spared by the pandemic's effect.

A message from the Medical Director

One of the most enduring qualities that I admire in the center's staff is their ability to continually overcome challenges even when these seem insurmountable. In the first weeks of the pandemic, panic was rampant. Like many healthcare centers, this uncertainty produced worry about our ability to serve our patients. I recall attending an early planning meeting with providers, nurses, and administrators about action strategies to tackle the pandemic. I was fully expecting at least some expressions of reducing services for our patients as many other cancer centers were doing nationwide. Astoundingly, the only expressions I heard in that meeting were an unwavering support to continue to provide top cancer care to our patients as we fully understand the anxiety that patients face with a cancer diagnosis. Effective strategies were put in place at that meeting to ensure that all our patients and staff remain safe. We then implemented a COVID monitoring plan to prevent any outbreaks in the center. I am pleased to report that throughout the pandemic year, we did not close the center once and no patients who were not personally infected

had their therapy interrupted. Additionally, our Covid positive rates at Kirkland were at or below the average when compared to other cancer centers. This is a testament to the diligent work and dedication of the Kirkland Cancer Center staff.

Cancer care is the most rapidly evolving field in all of medicine. Previously, for those suffering from advanced cancers, a significant amount of therapy was generalized. Today, techniques incorporating personalized genetic testing, tailored imaging, and innovative treatment approaches provide patients with a bespoke therapy plan that offers vast improvement in cancer responses. We pride ourselves on the ability to offer these cutting-edge treatments here in West Tennessee that rivals and often surpasses cancer centers in larger markets. Even with our ability to provide these advanced therapies, our staff and providers maintain a focus to never lose our core principle of maintaining the kindness and southern charm that West Tennessee people are famous for.

Lori Smith Cancer Survivor

At 41, in the prime of her life, Lori was diagnosed with something she never thought she'd have to deal with, ever. Initially, the mom of two shrugged off some symptoms she had been experiencing and thought it was "nothing." Lori had suffered from migraines for most of her adult life. However, she finally decided to seek out medical advice in regards to her worsening condition.

"I didn't want to complain, but I knew something wasn't right. These headaches were not typical and made me very sick," said Lori. An MRI revealed a brain tumor in her frontal lobe, likely coming from somewhere else in her body. Lori had surgery to remove the tumor and was later diagnosed with Stage 4 adenocarcinoma. Amazingly, Lori met this new diagnosis with fortitude, not fear.

In response to the aggressive recommended treatment plan, she was ready to attack the problem! Due to Lori's age and the fact she was a non-smoker, Dr. Gregory Franz, hematologist/oncologist, suspected she possessed the ALK positive gene. Lori tested positive for this mutation, which opened up additional treatment options. She credits her oncology team, Dr. Franz and Dr. Anastasios Georgiou, for being motivators; always being positive and optimistic.

Lori remembers the day she rang the bell at the completion of her 33 radiation treatments as being a highlight for her.

"When you come to the center every day for treatment, you get to know the staff really well. They become your friends," said Lori. She goes on to say, "As my family and friends gathered around to celebrate my last radiation treatment, my new friends were right there cheering me on as well!"

"I was told this was an aggressive cancer and we needed to treat it aggressively. Surgery was not an option for me due to the location of the spot on my lung and lymph node," said Lori. Although she had no reason to believe she was at risk for lung cancer, she wishes she had listened to her body sooner.

Nevertheless, she now has a wonderful prognosis. Her recommendation to all her friends is to "listen to your body, and go and get checked out. It's so worth it!" She attributes her positive experience to the Kirkland Cancer Center, Dr. Franz, Dr. Georgiou, and the staff.



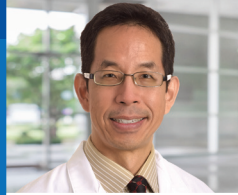
“Listen to your body,
and go and get
checked out.
It's so worth it!”

Lori Smith
Cancer Survivor

Kirkland Cancer Center Providers



Amy Bryant, APRN-BC
Hematology/Oncology



Jeffrey Chen, MD
Radiation Oncology



Chelsey Elliott, FNP-BC
Hematology/Oncology



Joseph Fouché, MD
Hematology/Oncology



Sophia Fouché, Phys.D.
Psychology



Gregory Franz, MD
Hematology/Oncology



Shuang Fu, MD
Hematology/Oncology



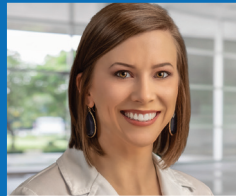
Anastasios Georgiou, MD
Radiation Oncology



Jeffrey Kovalic, MD
Radiation Oncology



Mary McMillan, FNP
Hematology/Oncology



Rebecca Guthrie Parker, DNP, FNP
Hematology/Oncology



Worthy Arrington Walker, DNP, FNP
Hematology/Oncology



Brian Walker, DO
Hematology/Oncology



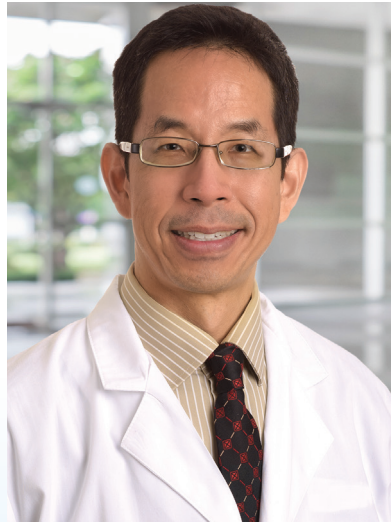
Archie Wright, DO
Hematology/Oncology

Newest Addition to Our Team

Dr. Jeffrey Chen

Dr. Chen joined the Kirkland Cancer Center family in 2020, and is board certified in Radiation Oncology. He is a Magna Cum Laude graduate from the University of Rochester who went on to train at the University of Rochester Medical Center in Rochester, New York, and Western Pennsylvania Hospital in Pittsburgh, Pennsylvania. He comes to us with special skills in Intensity-modulated radiation therapy, or IMRT, from Memorial Sloan-Kettering Cancer Center experience, including Stereotactic Radiosurgery (SBRT), Image-Guided Radiation Therapy (IGRT), Low-Dose Rate (LDR), Stereotactic Radiosurgery (SRS), and High-Dose Rate (HDR) techniques.

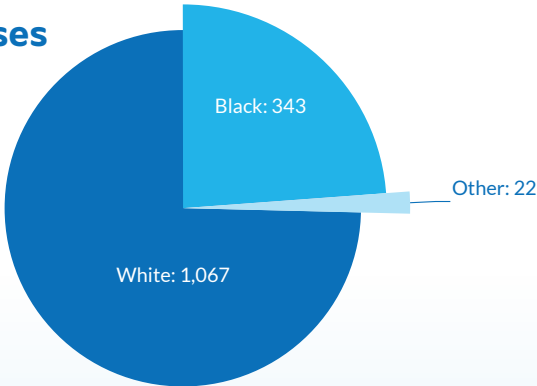
Dr. Chen was one of ten students from the nation selected for admission to both college and medical school out of high school at the University of Rochester. He finished college in 3 years with honors. He loves spending time with his family and all kinds of sports, especially the Texas Longhorns, LSU Tigers, Dallas Cowboys, and Los Angeles Lakers.



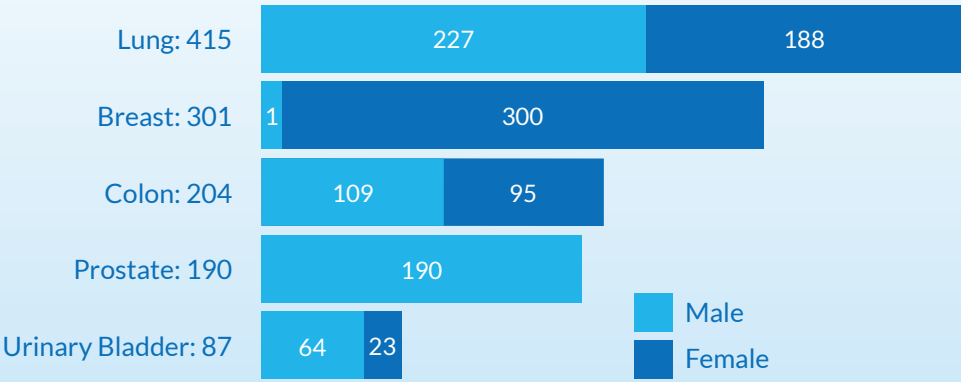
Jeffrey Chen, MD
Radiation Oncology

Kirkland | 2019 at a glance

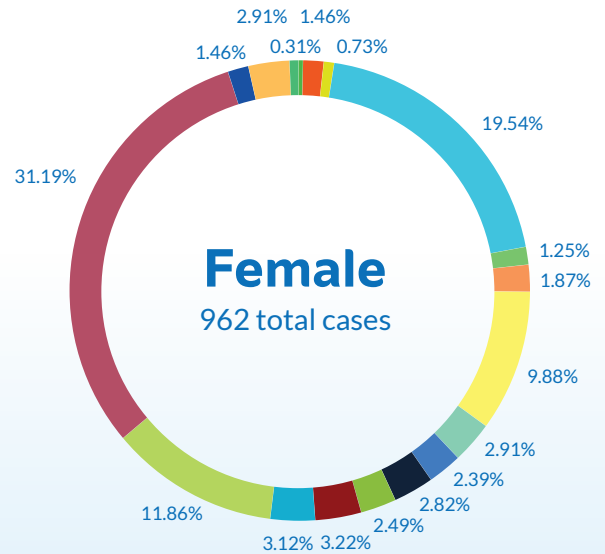
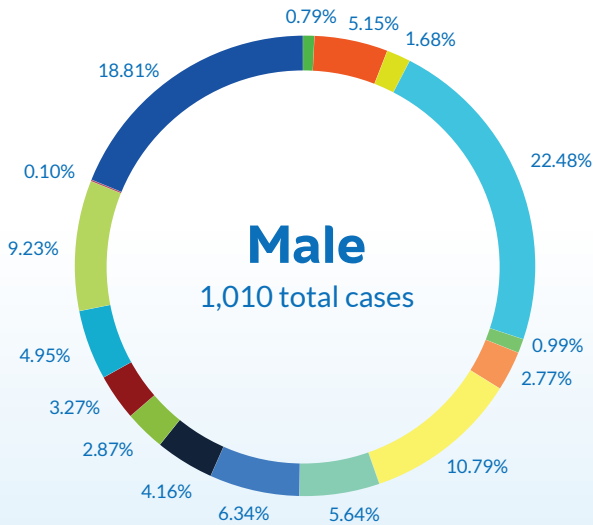
Cancer diagnoses by race



Top 5 cancer occurrences = 1,197



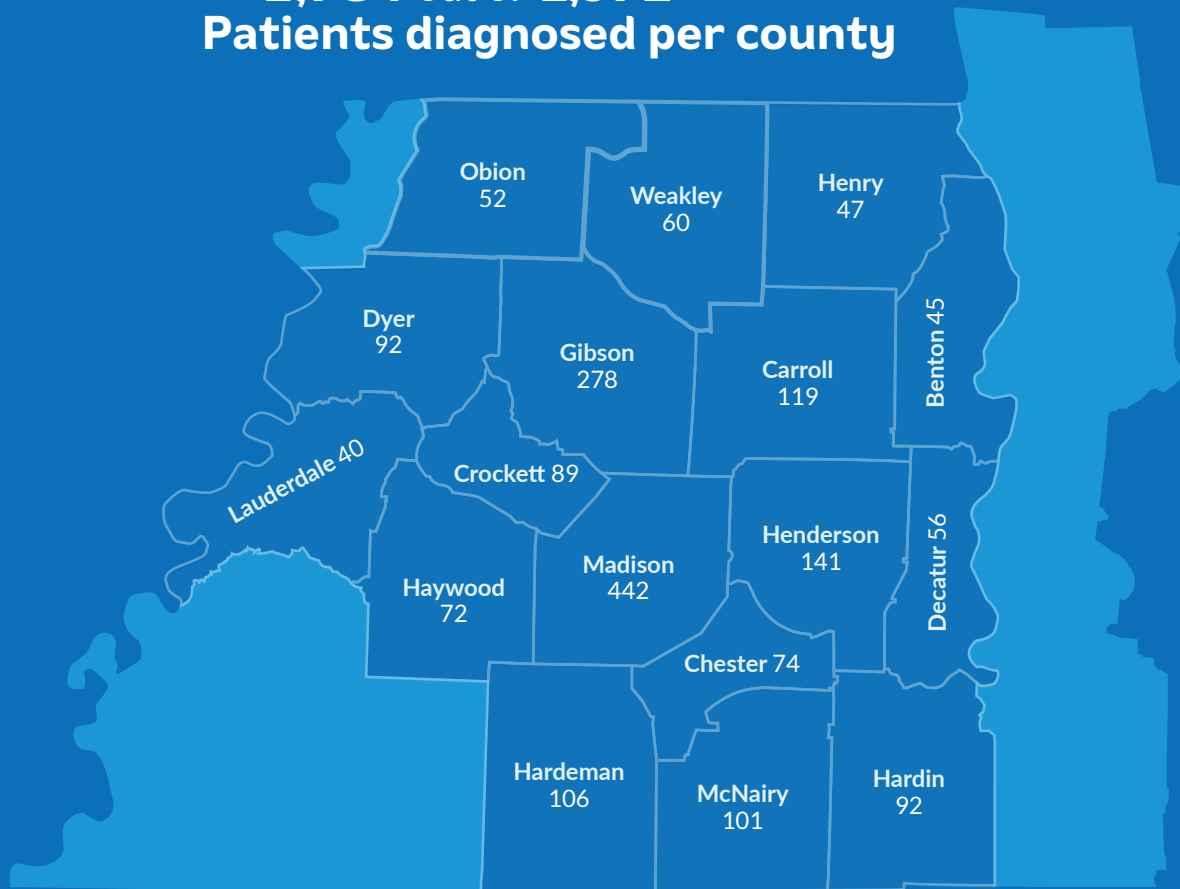
1,972 total cancer diagnoses.



- | | | |
|------------------------|--------------------------|-----------------------------------|
| Lung | Brain and Nervous System | Esophagus |
| Non-Hodgkin Lymphoma | Pancreas | Kidney |
| Corpus Uteri | Urinary Bladder | Melanoma |
| Cervix | Lukemia | Breast |
| Stomach | All Other Sites | Ovary/Prostate |
| Other Digestive Organs | Colon, Rectum | Lip, Oral Cavity, Pharynx, Larynx |

Kirkland | 2019 at a glance

1,784 out of **1,972**
Patients diagnosed per county



These numbers reflect patients diagnosed and/or treated at Jackson Madison County General Hospital in 2019



(L to R): Kim Tucker–Social Services Manager; Gina Myracle–Exe. Director of the Kirkland Cancer Center; Veronica Morrow; daughters Briana Morrow & Brittney Morrow. Not pictured: son, Brad Morrow.

The Spirit of Giving Lives On!

Christmas 2020 was extra special for some very blessed patients at Kirkland Cancer Center. They were surprised by generous gift cards from the Will Morrow Memorial Cancer Fund.

Will Morrow was diagnosed with stage 4 kidney cancer in August 2016, and passed away in July 2019. Veronica Morrow, being a dedicated and loving wife, did not want her husband's legacy to die after he passed away.

"Will had such a giving spirit, he loved helping people" explains Veronica. In December 2019, approximately 5 months after Will's death, Veronica and her children started the

Will Morrow Memorial Cancer Fund through the West Tennessee Foundation—to help cancer patients in financial need. Veronica explains that most cancer patients are already having a hard time emotionally, and it's especially difficult when they are experiencing financial hardships too.

"Being able to give has helped our family in the grieving process," says Veronica. "I'm glad that God has given me the opportunity to make a difference in someone's life... and for Will to continue making a difference in the lives of others."



APOTEKA
chemo

What is an Oncology Pharmacist?

Written by
Zac Halford, PharmD, BCOP, BCPPS

The oncology pharmacists, also known as the “cancer medication experts,” play an important role on the multidisciplinary team in all phases of cancer care, providing both clinicians and patients with evidence-based treatment recommendations and management strategies for adverse events. In addition, oncology pharmacists help improve medication adherence, identify and prevent serious drug interactions, navigate national drug shortages,



monitor the effects of prescribed anticancer and supportive care medications, and provide medication counseling and follow-up.

One unique responsibility of your Kirkland Cancer Center pharmacy team involves managing a state-of-the-art automated APOTECA chemotherapy robot. APOTECA robots have been employed at some of the largest and most prestigious medical facilities in the United States. Fortunately, the Alice & Carl Kirkland Cancer Center joined these innovative institutions in 2020, becoming one of the only community-based cancer centers in the country to install and operate the APOTECA automatic compounding technology. After quality control testing and advanced training, the oncology pharmacy team oversaw and approved nearly 5,000 anticancer doses prepared by the APOTECA robot. Using cutting-edge technology, APOTECA automation helps to improve efficiency, streamline procedures, improve safety, reduce patient wait times, and provide optimal care for those at the Kirkland Cancer Center. Overall, the APOTECA chemotherapy robot has been a valuable tool for the oncology pharmacy team at the Kirkland Cancer Center.

This impressive upgrade to the Pharmacy was made possible because of a “sizable” donation made to fund the advancements. The West Tennessee Healthcare Foundation aptly named this robotic pharmacy after Dr. Eugene Reese and his wife Eliane who made the generous donation.





“They made me feel special to them. I wouldn’t consider going anywhere else.”

Melanie Mitchell
Cancer Survivor

Melanie Mitchell Cancer Survivor

“I was having a jewelry party and I just couldn’t do anything with it,” said Melanie Mitchell, “And two days later I turned yellow.” Knowing something was wrong, Melanie turned to her doctor, who immediately sent her to Jackson-Madison County General Hospital, where she was scheduled for surgery. Following her surgery and recovery, Melanie began chemotherapy at Kirkland Cancer Center.

Melanie saw an oncologist, Dr. Archie Wright, and his staff. “They made me feel special to them,” Melanie says. “I wouldn’t consider going anywhere else.” Melanie, like other Kirkland Cancer Center patients, truly considers the staff to be family.

COVID & Cancer Screenings

As a cancer center dedicated to bringing awareness to our community regarding recommended cancer screenings, sadly, we could see the danger signs as COVID numbers increased and families retreated to their homes.

The American Cancer Society's data explains how the COVID-19 pandemic has impacted cancer screening and cancer care:

- In the US, studies have found more than one third of adults failed to receive recommended cancer screening during the pandemic.
- 43% of patients have missed routine preventative appointments due to COVID-19 fears.
- 35% of American adults had a cancer screening scheduled during the pandemic and missed it.
- An estimated 22 million cancers were canceled or missed between March and June of 2020.
- One study found, at the initial peak of the pandemic in April, screenings for breast, colon, prostate and lung cancers were lower by 85%, 75%, 74%, and 56% respectively.
- Regulations for travel and indoor businesses can vary by state and timing. These changes and resulting confusion have factored into a 70-80% reduction in the number of patient visits to doctor offices, including a 76% decline in patients presenting with asymptomatic conditions.

- An estimated 12 million individuals have lost their employer sponsored health insurance coverage with disproportionate impact on Black and Hispanic people.

Why this matters:

- Screening saves lives! The earlier the cancer is detected, the more options there are for treatment, and the better the chances for survival.
- The National Cancer Institute (NCI) states that almost 10,000 excess deaths in the US from breast and colorectal cancer alone over the next 10 years will be because of pandemic-related delays in cancer screening and treatment. This estimate does not account for other cancer types and assumes only a 6-month disruption in care, suggesting the actual excess deaths could be much higher.



True Progress

In October 2020, we installed our second TrueBeam Linear Accelerator in the radiation oncology department at the Kirkland Cancer Center. This machine, along with a very skilled team of doctors and other specialized professionals, assures that you and your loved ones get the very best cancer care right here in West Tennessee. Since we began treating patients with our new TrueBeam, we have made a difference in the lives of nearly 400 patients. The TrueBeam is capable of delivering very advanced treatments including stereotactic radiosurgery, which can deliver precisely targeted radiation in fewer high-dose treatments than traditional therapy.

With this technology, patients with some types of cancer can get the benefits of surgery, often with fewer side effects and no hospital stay. We are also

able to deliver conventional treatments with more accuracy and shorter treatment times. Cancer care is rapidly evolving, but here at the Kirkland Cancer Center we have been blessed with some of the best and most advanced technology in radiation oncology.

“Since we began treating patients with TrueBeam, we have already made a difference in the lives of nearly 400 patients.”

Adam Farmer, MS, DABR
Physicist, Kirkland Cancer Center



TeleHealth in the Age of COVID-19

The practice of Telehealth has been a transformative tool for the delivery of healthcare services. Continuity of care has been of the utmost concern to Kirkland Cancer Center's providers during COVID-19. The use of Telehealth/ virtual visits has filled in the gap in some instances. Virtual healthcare visits by providers have risen significantly, almost doubling since 2016. Physicians' willingness to use telehealth increased from 69% to 77% in 2015 alone. The COVID-19 pandemic allowed us to see the many advantages to this health care option including access to care, elimination of transportation barriers, patient engagement, physical satisfaction, cost-saving, and flexibility.

Though there are many questions and concerns about this mode of healthcare from providers and patients alike, most can be alleviated by the knowledge that providers still must be licensed and credentialed to practice in the state and with the institution they provide care for. Compliance with HIPAA and privacy practices must also be adhered to. Telehealth services must meet the same requirements as if services were delivered face to face.

As with any new concept in healthcare, implementing telehealth into practice requires good logistics. Video platforms, conferencing hardware, clinic workflow, pilot and testing, and feedback from patients and staff all need top consideration for optimal results.

However, healthcare trends are always changing with pandemics, epidemics, and other healthcare crises that are sure to come. Telehealth definitely has a place in the future of healthcare.



Claude Pirtle, MD
Internal Medicine Physician
and Associate Chief
Medical Information Officer

“Telehealth is a powerful solution that allows improved patient access, patient experience, and continuity of care. It is here to stay, and we plan to continue to push forward using it as a tool to provide high quality of care to all of our patients.”